



*Always Moving Forward<sup>®</sup>*

***Superior Industrial Solutions in  
Wire, Cable and Tube Processing***

**Made in Syracuse.  
Used around the world.**  
eraser.com • ISO registered



# THE ERASER COMPANY, INC.

## SUPERIOR INDUSTRIAL SOLUTIONS IN WIRE, CABLE AND TUBE PROCESSING

### OUR HISTORY

From The Eraser Company, Inc.'s founding in 1911 through its incorporation in 1935, The Rush FybRglass Eraser® was the company's lone manufactured product. Then came the 1940s and the discovery that the eraser could be used not only for typing and drafting correction, but to strip film insulation from magnet wire – the birth of an industry.

As the innovator of a whole line of magnet wire strippers, we have continued to expand and refine our product offerings. In the past 20 years, we have brought to market all types of wire, cable and tubing cutters, wire and cable strippers, wire twisters, wire brush wheels, reelers and dereelers, infrared heating equipment, measuring tools and fybRglass® erasers.

The Eraser Company, Inc. attained ISO certification in February of 1996, thus underscoring our commitment to providing our customers with reliable, high-quality products. Much of our product line meets CE standards; indeed, CE requirements inform new product design. Our ISO-certified commitment to continual improvement inspires us to include many new features and upgrades to our existing equipment offerings.

### CERTIFICATION PROGRAM

How do we deliver on the commitment? We offer ECP (Eraser Certification Program). Send us 10-15 feet of your material; we'll process it according to your specifications and return it to you with a recommendation for the ultimate solution for your processing needs. If your solution is not part of our extensive product line, our highly skilled engineers can custom-design one for you. Further, if we can't do it, we'll tell you who can! There is no better service out there.

### CUSTOMIZED SOLUTIONS

Most needs can be met by our line of over 200 products. For those special applications, we offer state-of-the-art design software and a team of engineers to customize a solution for you. Thousands of satisfied customers across the globe can attest to our one-of-a-kind, built-to-order approach to their toughest challenges.

Whether you are one of our long-standing customers or just beginning your partnership with us,

The Eraser Company, Inc. looks forward to serving you. Call today, as we are...

**...ALWAYS MOVING FORWARD!**



"Eraser matched us with a custom made, high quality processing solution that has not only improved our business but has also saved us time, money and unnecessary processing headaches!

We've improved our production capabilities by 200%!"

Frank Evancich

Klode Salvage Distribution Center, Inc. ~ Denver, CO

Eraser Cleaning and Burnishing brushes are made from coarse or fine grade FybRglass®, Brass, Nylon and Stainless Steel. These tools are suitable for a wide variety of cleaning, burnishing and polishing applications including electrical contact cleaning, mold cleaning, rust removal, deburring small metal parts, erasing printing marks, cleaning contact pads and fingers of printed circuit boards, and much more. Custom designed brushes for your process can be quoted upon request.

## FybRglass® Erasers and Brushes



A range of refillable cleaning tools using brushes made from coarse and fine grade FybRglass®, brass, nylon, and stainless steel. Available with a plastic protective coating or all metal construction body. Sold individually or in a kit that contains five tools with brushes made from brass, stainless steel, nylon, coarse and fine FybRglass®.

## Pen Type Erasers

### Ordering Information

#### **FybRglass® Eraser and Refills (With Pen Clip)**

AA0120 .....(Red) Metal Body with Fine FybRglass®  
IA0380.....Fine FybRglass® refills (each)  
AA0019 ..... Fine FybRglass® refills (packet of 25)

AA0020 .....(Blue) Metal Body with Coarse FybRglass®  
IA0006..... Coarse FybRglass®refills (each)  
AA0014 ..... Coarse FybRglass® refills (packet of 25)

#### **FybRglass® Silver Color only, (Without Pen Clip)**

AA2120 ..... Metal Body with Fine FybRglass®  
AA2020 ..... Metal Body with Coarse FybRglass®

## Pen Type Erasers (Cont'd)

### Ordering Information

#### **Brass Erasers (With Pen Clip)**

AA0004.....(gold) Metal Body Brass eraser  
IA0370.....Brass refills (each)

#### **Stainless Steel (With Pen Clip)**

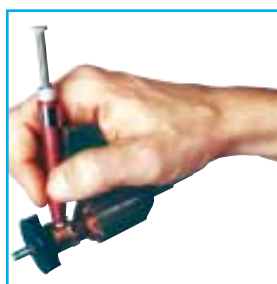
AA0003(E116) ..... Stainless Steel Metal Body eraser  
IA0360.....Stainless Steel refills (each)

#### **Nylon Eraser (With Pen Clip)**

AA0005 (E126) ..... (black) Metal Body Nylon Eraser  
IA0410 (E124) ..... Nylon refills (each)

#### **Metal Body Brush Kit (With Pen Clips)**

AA0124 (EKIT) ..... Kit of 5 Metal Body erasers  
(one each of Stainless Steel, Fine FybRglass®, Brass, Nylon,  
and Coarse FybRglass®)



**Metal Body FybRglass®  
Brush (With Clip)**



**Abraser Brush**

## Eraser Stick Brushes

Stick and Abraser brushes with plastic protective covering that is cut back as brush wears. FybRglass® brushes are manufactured from spun glass in two grades of material, coarse and fine. Brushes will not alter electrical properties or contaminate surfaces cleaned.



### Ordering Information

#### **Stick Brushes, 5-1/2" long (140mm)**

AA0104 (BR0/F) ..... Fine stick brush 1/4" OD  
(6mmø), (red)  
AA0022 (BR1/F) ..... Fine stick brush 5/8" OD  
(16mmø), (red)  
AA0023 (BR2/F) ..... Fine stick brush 1" OD  
(25mmø), (red)  
AA0130 (BR0/C).....Coarse stick brush 1/4" OD  
(6mmø), (blue)  
AA0129 (BR1/C).....Coarse stick brush 5/8" OD  
(16mmø), (blue)  
AA0128 (BR2/C).....Coarse stick brush 1" OD  
(25mmø), (blue)

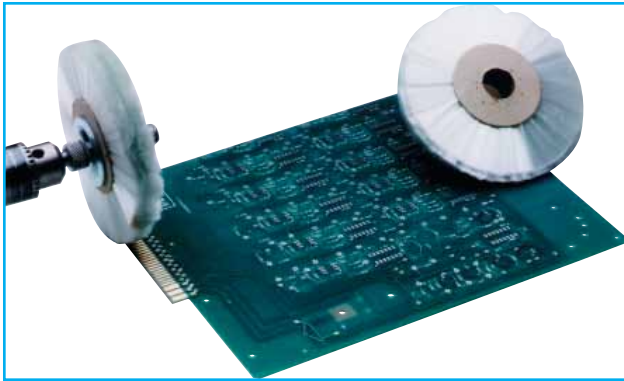
#### **All Stick Brush Kit**

AA0123 (BRKIT) ..... One each of the stick brushes  
(listed above)

#### **Abraser brushes are 7/8" (22mm) long**

AA0610 (ABR3F) .....Fine grade abraser (red)  
AA0600 (ABR3C) .....Coarse grade abraser (blue)

## Rotary FybRglass® Cleaning Wheel



Filled with pure spun fine grade FybRglass® fibers with no bonding agent this wheel is designed for rotary use mounted on spindles or mandrels. Wheels may be stacked together on a spindle to produce a wide face brush. The safe maximum free speed for the CP154 is 2,000 RPM.

### Ordering Information

BE0002 ..... FybRglass® Wheel  
4" OD x 2.5" wide width (101mm OD x 63.5mm wide) with  
3/4" arbor hole (19mmø)

## All Kit



The ultimate brush kit, containing all of the industrial brushes except the ECT1, provides the opportunity to evaluate all the brushes and have on hand the solution to many cleaning, polishing, and burnishing problems at all times.

### Ordering Information

AA0012 (ALLKIT) ..... Kit of all brushes

## BR4 Metal Cased Brushes

An adjustable metal cased brush. The brush is propelled from the case by a turn of a knob to compensate for wear.



Eraser FybRglass® Brushes will not alter electrical properties or contaminate surfaces cleaned. Overall length of brush is 4" (102mm), cleaning surface is 1-3/8" x 3/8" (35mm x 9.5mm), and usable brush length is 2-3/4" (69mm).

### Ordering Information (BR4 Metal Case)

AA0024 (BR4/F) ..... Metal cased brush (red)  
with fine grade material  
AA0025 (BR5/F) ..... Fine refill for BR4/F (one set)  
AA0127 (BR4/C) ..... Metal cased brush (blue)  
with coarse grade material  
AA0131 (BR5/C) ..... Coarse refill for BR4/C (one set)

## BR9 PCB Board Brush



Hand held power brush for cleaning and burnishing non-populated printed circuit boards or large areas.

A gentle brushing action will remove oxidation from copper and soldered surfaces. No water or solvent is required.

The cleaning surface of the BR9 measures 2" x 3.5" (51mm x 89mm).

### Ordering Information

AA0026 (BR9) ..... Hand brush — fine grade FybRglass®



## LFTC1 Large Flexible Tubing Cutter



Designed to cut material such as tygon, radiator hose, flexible PVC, polyurethane, silicone, nylon PTFE, FEP and PFA to length, this cutter is the perfect tool for large flexible tube cutting.

### Specifications

Material size ..... 2 1/8" to 1/2"  
(54mm - 12.7mm)  
Max. cut length ..... unlimited  
Min. cut length ..... 2.00" (50.8mm)

### Ordering information

AR1431 (LFTC1) ..... 120V, 60Hz  
AR1432 (LFTC1) ..... 230V, 50Hz  
IR1817 ..... Bushing Set  
IR1819 ..... Cutting Blade  
PR1026 ..... Flat Belt

## RTC1 Rigid Tubing Cutter



Designed to cut material such as copper, aluminum and mild steel, this cutter is the perfect tool for rigid tube cutting.

### Specifications

Max. Material size ..... 7/16" OD (11.1mm)  
Min. Material size ..... 1/8" ID (3.18mm)  
*Larger Sizes Available by Quotation Only.*

Max. cut length ..... unlimited  
Min. cut length ..... 2.00" (50.8mm)

### Ordering information

AR1411 (RTC1) ..... 120V, 60Hz  
AR1412 (RTC1) ..... 230V, 50Hz  
IR1832 Cutting Discs ..... 2 Required per Machine  
IR1809 ..... Bushing Set  
PR1026 ..... Replacement Drive Belt

## FTC1 Flexible Tubing Cutter



Designed to cut material such as tygon, radiator hose, flexible PVC, polyurethane, silicone, nylon PTFE, FEP and PFA to length, this cutter is the perfect tool for flexible tube cutting.

### Specifications

Material size ..... 1 1/8" to 1/4"  
(28.6mm - 6.4mm)  
Max. cut length ..... unlimited  
Min. cut length ..... 2.00" (50.8mm)

### Ordering information

AR1421 (FTC1) ..... 120V, 60Hz  
AR1422 (FTC1) ..... 230V, 50Hz  
IR1807 ..... Bushing Set  
IR1296 ..... Cutting Blade  
PR1026 ..... Flat Belt

Eraser manufactures an array of industrial-grade cutters suitable for cutting a wide range of materials. Designed to fit your specific application, material, and budget, Eraser cutters are available in automatic and semi-automatic, bench and portable. And if we don't have one suitable for your specific needs, we can customize to fit your requirements.

### WC601A Variable Speed Cutter



Designed to cut hook-up wire, solder, miniature cables, and shrink tubing to length, this cutter is perfect for any assembly environment.

#### Specifications

Max. material size ..... 0.375" OD (9.5mmø)  
 12 AWG (2.06mmø) solid copper  
 Max. cut length ..... 9,999,999"  
 Min. cut length ..... 0.1" (2.54mm)  
 Tolerance ..... under 2", +/- .01; over 2"  
 1% or better dep. on material and feed rate  
 Batching ..... up to 99 programmable batches  
 Kits ..... 10 programmable kits

#### Ordering information

AR7121 (WC601A) ..... 120V 60Hz, 90 PSI  
 Dereeler optional (DE400 or DE700); see Dereeler section for details.

### WC601B Rotary Blade Tubing Cutter



The ultimate automatic cutter provides square cuts on flexible tubing up to 1/2" OD.

#### Specifications

Max. material size ..... 0.500" (12.7mm) thick  
 Max. cut length ..... 9,999,999"  
 Min. cut length ..... 0.1" (2.54mm)  
 Tolerance ..... under 2", +/- .01; over 2",  
 1% or better dep. on material and feed rate  
 Batching ..... up to 99 programmable batches  
 Kits ..... up to 10 programmable kits

#### Ordering information

AR7131 (WC601B) ..... 120V 60Hz  
 IR1872 ..... custom bushing, send material for sizing  
 IR1871 ..... custom bushing, send material for sizing  
 Dereeler optional (DE100 or DE700); see Dereeler section for details.

### WC601D Rotary Blade Tubing Cutter



This automatic cutter provides square cuts on flexible tubing up to 1 1/8" OD.

#### Specifications

Material ..... 1/2" to 1 1/8" OD (12.7 to 28.5mmø)  
 Max. cut length ..... 999,999.99"  
 (999,999.9mm)  
 Min. cut length ..... 0.100" (2.52mm)  
 Tolerances ..... Repeatability: +/- 0.005" (0.13mm) to 5%  
 of total length; dependent on material and dereeling system.  
 Kitting ..... Up to 10 programmable kits  
 (depending on available memory)  
 Batching ..... Up to 99 programmable batches  
 Feed Rate ..... 10.4" (264mm) per second

#### Ordering Information

AR7151 (WC601D) ..... 120V, 60Hz  
 IR0977 ..... custom bushing, send material for sizing  
 Dereeler optional (DE100 or DE700); see Dereeler section for details.

## WC302 Auto Wire & Tube Cutter



Fully programmable, fully electric benchtop wire & tube cutter. With programmable batching and nine variable feed rates, the WC302 is the perfect production tool for complete automation.

### Specifications

Max. material size ..... Tubing: 0.281" OD (9/32) (.713cm)  
Wire: 12 AWG (.233cm) (stranded) or 14AWG (.162cm) solid  
Max. cut length ..... 99,999" (or 99,999cm)  
Min. cut length ..... 0.050" (.127cm)  
Tolerance ..... At cut lengths under 2" on most materials, the tolerance is  $\pm 0.01$ " (.025cm). All other cut length tolerances are 1% or better dependent on material and feed.  
Programmable length compensation of  $\pm 99\%$  is built into the unit to accommodate unusual materials.  
Batching ..... Up to 99 programmable

### Ordering information

AR7211 (WC302) ..... Wire & Tube Cutter 120V, 60HZ

## CS800 Automatic Cutter & Stripper



Fully programmable, fully electric benchtop wire cut & strip. With programmable batching and ten variable feed rates, the CS800 is the perfect production tool for complete automation.

### Specifications

Max. material size ..... 10AWG (0.3cm)  
Max. cut length ..... 65,530 inches, 99,999cm  
Min. cut length ..... 0.1" (2.54mm)  
Max. strip length Up to 4.0 inches (10.2cm)-wire dependent  
Min. cut length ..... .01" (.254mm)  
Tolerance ..... Up to 1% - wire dependent  
Batching ..... Up to 99 programmable

### Ordering information

AR7201 (CS800) ..... Wire Cut & Strip 120V  
IR1793 ..... .098 ID bushings  
IR1794 ..... .116 ID bushings  
IR1795 ..... .250 ID bushings  
IR1791 ..... .035 ID bushings

## MMC200 Multi-Material Cutter



A versatile cutter that cuts flat, round and multiple materials from 10 AWG wire to cellophane tape.

### Specifications

Max. material size ..... 0.625" (1.59cm) thick  
3.94" (10cm) wide, 10 AWG (.040cm) solid copper  
Max. cut length ..... 99,999" (99,999.0cm)  
Min. cut length ..... 0.100" (.25cm)  
Tolerance ..... 1% or better dep. on material and feed rate  
Batching ..... up to 10 programmable batches  
Max. cutting force ..... 600 lbs.  
Feed rate ..... up to 7,200 4" (101.6mm) pieces per hour

### Ordering information

AR7161 (MMC200) ..... 120V 60Hz, 90 PSI  
Dereeler optional (DE400 or DE700); see Dereeler section for details.

## HCA20 Wire & Cable Cutter



This air-operated cutter uses a guillotine-style blade to quickly shear wire and cable up to 1.25" in diameter.

### Specifications

Max. blade opening..... 1.25" diameter (31.75mm)  
Min. material size ..... 0.010" diameter (0.254mm)

### Ordering information

AR0291 (HCA20) ..... 120V 60Hz  
AR0292 (HCA20) ..... 220/240V 50Hz, European plug

## FC10 & HC10 Cable Cutters



Whether the foot-operated FC10 or the hand-operated HC10, these cutters provide clean, square cutting of a variety of different wires and cables.

### Specifications

Max. blade opening..... 1.00" diameter (31.75mm)  
Min. material size ..... 0.010" diameter (0.254mm)

### Ordering information

AR5700 (HC10) ..... hand operated  
AR5800 (FC10) ..... foot operated  
IR8775 ..... conversion kit, changes HC10 to FC10

## CCB100 Battery Operated Cable Cutter



This battery-operated cutter is ideal for cutting copper or aluminum in the field.

### Specifications

Max. cable diameter ..... 1000 kcmil soft drawn copper  
750 kcmil hard drawn copper  
not for use on steel  
Blades ..... hardened steel (one fixed, one rotating)  
Power ..... 12.0V DC motor  
Battery ..... sealed nickel cadmium  
Battery charger ..... 120V 60Hz AC single phase

### Ordering information

ER0601 (CCB100) ..... portable cable cutter kit

## MR30A Handheld Air-Operated Cutter



Lightweight and powerful, this air-operated cutter uses 70-90 PSI to create up to 617 pounds of cutting force.

### Specifications

Max. wire size ..... 0.130" OD (3.3mmø) copper  
0.110" OD (2.79mmø) steel  
0.047" OD (1.19mmø) piano wire  
Tool dimensions.... 7" (177.8mm) long, 2.20" OD (56mmø)  
Tool weight..... 1.2 lbs. (0.544 Kg)  
Air connection ..... 1/4" NPT

### Ordering information

DE0009 (MR30A) ..... 90 PSI  
CL0149 ..... blade for center cuts  
CL0158 ..... blade for end cuts  
CL0159 ..... carbide tipped blade for diagonal cuts



## 9 Parts Specifications for Wire, Cable & Tubing Cutters



### WC302 Auto Wire & Tube Cutter

#### Optional accessories

IR5171 .....	Optional Urethane Drive Roller
TR5169 .....	Optional Knurled Drive Roller

### CS800 Automatic Cutter & Stripper

#### Optional accessories

PR1222 .....	radius blade set for 12AWG
PR1221 .....	radius blade set for 10AWG
PR1223 .....	radius blade set for 14AWG
AR3950 .....	WS1 Wire Straightener for material up to 3/8" (9.5mm)

### RTC1 Rigid Tubing Cutter

#### Optional accessories

TR0176 .....	length stop rod
--------------	-----------------

### FTC1 Flexible Tubing Cutter

#### Optional accessories

TR0176 .....	length stop rod
--------------	-----------------

### LFTC1 Flexible Tubing Cutter

#### Optional accessories

TR0176 .....	length stop rod
--------------	-----------------

### WC601A Wire & Tubing Cutter

#### Optional bushing sets:

IR0755 .....	for up to 1/8" OD (3.17mmø) material [actual size is 0.156" (3.96mm)]
IR0756 .....	for up to 1/4" OD (6.35mmø) material [actual size is 0.281" (7.14mm)]
IR0757 .....	for up to 3/8" OD (9.5mmø) material [actual size is .406" (10.3mm)]
IR0763 .....	for 1/8" - 3/8" (3.175mmø - 9.525mmø), send material for sizing
IR0764 .....	for 1/16" - 1/8" (1.60mmø-3.175mmø), send material for sizing
IR0765 .....	for 1/32"-1/16" (0.793mmø-3.175mmø), send material for sizing

### MMC200 Multi-Material Cutter

#### Optional accessories

IR1322 .....	upper blade for thin, flat material
--------------	-------------------------------------

Eraser offers reelers, dereelers, winders and measuring tools for a broad range of wire and cable handling needs. Manual, motorized or compensating reelers and dereelers and measuring tools work with Eraser cable processing units to provide complete combinations of material handling equipment.

### CW10 Small Reeler and Dereeler



A collapsible reeler with friction clutch for a variety of wire and cable also dereels hanks or coils of material by reversing the reeling operation.

#### Specifications

Coil Dimension:

Inside Diameter Variable 5" (127mmø) to 12" (305mmø)

Unit may be set and locked for a specific diameter

Capacity:

Length Up to 1000' (305M) of 1/8" (3.18mmø) diameter wire or equivalent.

Weight of Coil 55 lbs. (25 Kg) maximum

#### Ordering information

AR6001 (CW10) ..... Small Reeler and Dereeler

*Optional Parts*

IR0491 (Bench Stand)..... For use with reelers, dereelers and measuring meters

IR0492 (Floor Stand) ..... For use with reelers, dereelers and measuring meters

### CW20 Medium Reeler and Dereeler



The unit has a friction clutch, making it ideal for dereeling, measuring, cutting and reeling operations by production kitters, jobbers, and electrical contractors.

#### Specifications

Coil Dimension:

Inside Diameter Fixed at 12" (305mmø)

Outside Diameter Variable up to 21" (419mmø)

Width of Coil:

At Inside Diameter Up to 3 1/2" (89mm)

At Maximum Outside Diameter Up to 7 1/2" (191mm)

Capacity:

Length Up to 1200' (366M) of 1/4" (6.35mmø) diameter wire or equivalent.

Weight of Coil 60 lbs. (27.3 Kg) maximum

#### Ordering information

AR7001 (CW20) ..... Medium Reeler and Dereeler

*Optional Parts*

IR0491 (Bench Stand)..... For use with reelers, dereelers and measuring meters

IR0492 (Floor Stand) ..... For use with reelers, dereelers and measuring meters

### CW30 Large Reeler and Dereeler



This collapsible unit reels or dereels coils of wire or cable. An adjustable friction clutch is incorporated to prevent overruns in dereeling operations.

#### Specifications

Coil Dimension:

Inside Diameter Fixed at 27" (686mmø)

Outside Diameter Variable up to 36" (914mmø)

Width of Coil:

At Inside Diameter Up to 6 1/4" (159mm)

At Maximum Outside Diameter Up to 9 1/2" (241mm)

Capacity:

Length Up to 300' (91M) of 3/4" (19mmø) diameter wire or equivalent.

Weight of Coil 150 lbs. (68.2 Kg) maximum

#### Ordering information

AR8001 (CW30) ..... Large Reeler and Dereeler

## Measuring Meters



Designed to measure long lengths of wire, cable, flat cable and other flexible material, a digital counter records the amount of measured material.

### Specifications

Measure rates ..... up to 1,000 feet (305M) per minute  
 Material size ..... Flexible material from 1/64" (0.40mm) to 2" (50.8mm) dia. or width  
 Readout ..... feet and inches to 9,999'11" or meters and 1/10 meters to 9,999.9M  
 Accuracy ..... ±.5% depending on material and feed

### Ordering information

AR0610 (WMI) ..... Measuring meter (feet/inches) steel rollers  
 AR0620 (WMM) ..... Measuring meter (meters) steel rollers  
 AR0630 (WMIU) ..... Measuring meter (feet/inches) urethane rollers  
 AR0640 (WMMU) ..... Measuring meter (meters) urethane rollers  
 AR0650 (WMIG) ..... Measuring meter (feet/inches) abrasive coated rollers  
 AR0660 (WMMG) ..... Measuring meter (meters) abrasive coated rollers

### Optional Parts

IR0491 ..... bench stand  
 IR0492 ..... adjustable floor stand

## DE300 Reel Lifter and Dereeler



Utilizing the help of leverage, these units enable two people to set up reels over 2000 lbs. (909 Kg) in weight.

### Specifications

DE300 Max. reel width ..... 31" (787mm)  
 DE300 Max. reel dia. .... 48" (1219mmØ)  
 Min. reel arbor dia ..... 1-11/16" (43mmØ)

### Ordering information

AR5300 (DE300) ..... Cable reel lifter and dereeler

## DE700 Compensating Dereeler



By providing fine adjustment control on the reel payout tension, this compensating dereeler prevents material over-runs when used with wire cutters or cut and strip machines.

### Specifications

Max. reel diameter ..... 16-1/2" OD (419mmØ)  
 Max. reel weight ..... 100 lbs. (45Kg)  
 Reel hub diameter ..... 5/8" to 1-3/16" OD (16mm to 30mmØ)  
 Max. reel width ..... 10-1/4" (260mm)

### Ordering information

AR0170 (DE700) ..... Compensating dereeler

## DE600 & DE600M Dereeler & Winder



When motorized, the reeler easily reels wire or cable without operator fatigue, or dereels large amounts of wire or cable with no pulling. A handle enables manual reeling and dereeling.

### Specifications

DE600 Max. reel width .....14-3/4" (365mm)  
DE600M Max. reel width .....15-3/4" (390mm)  
Max. reel dia .....29" OD (737mmø)  
Reel arbor diameter .....3/4" to 2-1/8" (19mmø to 54mmø)

### Ordering Information

AR5600 (DE600) ..... Manual dereeler and winder  
AR5701 (DE600M) ..... Motorized dereeler and winder,  
120V 60Hz

## DE400 Bench Mounted Dereeler



Bench mounted, this unit adjusts for reel hub diameter for various sizes up to 50lb.

### Specifications

Max. Reel dia ..... 19" (483mmø)  
Max. Reel width ..... 6" (152mm)  
Min. Reel hub dia ..... 11/16" (17.5mmø)  
Max. Reel hub dia ..... 6" (152mmø)  
Max. reel weight ..... 50 lbs. (23 Kg)  
Overall Size ..... 13" x 10" x 6"  
(330mm x 254mm x 152mm)  
Weight ..... 10 lbs. (4.5 kg)

### Ordering information

AR3801 (DE400) ..... Reeler and dereeler  
Optional Parts  
IR0491 ..... Bench stand  
IR0492 ..... Floor stand  
TR4400 ..... Extension Kit  
Extends Reel width from 6"(152mm) to 10"(254mm)



## DE100 Turntable Dereeler



The single station turntable will accommodate a reel up to 100 lbs. (45 Kg).

### Specifications

Turntable Diameter ..... 8" (203mmø)  
Overall Size ..... 9" x 10-1/2" (229mm x 267mm)  
Max. reel weight..... 100 lbs. (45 Kg)

### Ordering information

AR0010 (DE100) ..... Single Station Dereeler

## DE500 Five Station Dereeler



This free-running, five station dereeler will hold up to five 50 lb. (23 Kg) reels and is perfect for all dereeling applications.

### Specifications

Turntable Diameter ..... 18-1/4" (464mmø)  
Individual Turntable Diameter ..... 6-1/2" (165mmø)  
Overall Size ..... 16-5/8" x 18-3/8" (422mm x 467mm)  
Max. reel weight..... Five 50 lbs. (23 Kg) reels

### Ordering Information

AR0015 (DE500) ..... Five Station Dereeler

## Wire Straightner



This unit is for use with all wire cutters, or it can be used separately. The maximum opening between rollers is 3/8" (9.5mm)

### Specifications

Wire Sizes .... Maximum opening between the straightening rollers is 3/8" (9.5mm). Wire size is dependent on flexibility and degree of straightness.  
Minimum opening between the straightening rollers is zero  
Size ..... 5-3/8" x 3-3/8" x 2-3/4" (136mm x 85mm x 70mm)  
Weight ..... 3 1/4 pounds

### Ordering information

AR3950 (WS1) ..... Wire Straightner

Whether you're working with coaxial, extruded, or magnet/enamel wire or cable, Eraser offers a wide range of stripping options. Designed to our exacting specifications to meet your specific needs, our complete line of blade, thermal, or chemical strippers features more than 40 products. And if you can't find it in our standard product line, we can custom build one for you!

## Coaxial Wire & Cable Strippers

## 824 Portable Coaxial Cable Stripper



**This portable, two pound unit can be used to strip coaxial cables, including RGU, semi-rigid, plenum, and heliax. Unit comes with carrying case, charger and adapter cord.**

## Specifications

Max. cable size..... 0.430" OD (10.9mmø)  
Min. cable size ..... 0.030" OD (0.76mmø)  
Max. strip length ..... 0.965" (24.5mm) standard,  
longer lengths available as special  
Min. strip length ..... 0.050" (1.27mm)  
dep. on material, diameter and construction  
Power ..... standard battery pack  
110V charger, DC adapter charger cord

## Ordering information

RC2000 (824) ..... 110V  
See page 25 for cutter head selection and options.

## 1256 Coaxial Cable Stripper



**This footswitch-activated bench stripper can strip up to five levels on coaxial cable in less than five seconds.**

## Specifications

Max. cable size.....	0.430" OD (10.9mmø)
Min. cable size .....	0.030" OD (0.76mmø)
Max. strip length .....	1.75" (44.4mm) standard, longer lengths available as special
Min. strip length .....	0.050" (1.27mm) dep. on material, diameter and construction

## Ordering information

RC1071 (1256) ..... 120V 60Hz  
RC1068 (1256) ..... 120V 60Hz, 1/4"  
diameter drilled for extended conductor strip length  
*See page 25 for cutter head selection and options.*

## Extruded Wire & Cable Strippers

### CS800 Automatic Cutter & Stripper



Fully programmable, fully electric benchtop wire cut & strip. With programmable batching and ten variable feed rates, the CS800 is the perfect production tool for complete automation.

#### Specifications

Max. material size ..... 10AWG (2.95mmø)  
Max. cut length ..... 9,999,999"  
Min. cut length ..... 0.1" (2.54mm)  
Max. strip length ..... 4" (101.6 mm)  
Min. cut length ..... .01" (2.54mm)  
Tolerance ..... 1%  
Batching ..... up to 67 programmable

#### Ordering information

AR7201 (CS800) ..... Wire Cut & Strip 120V  
IR1793 ..... .098 ID bushings  
IR1794 ..... .116 ID bushings  
IR1795 ..... .250 ID bushings  
IR1791 ..... .035 ID bushings

### C100S Rotary Wire Stripper



This unit features convenient adjustment knobs for strip length and blade depth adjustments that are easily made while this wire stripper and twister is running.

#### Specifications

Max. wire size over insulation ..... 0.228" OD (5.79mmø)  
Min. wire size over insulation ..... 0.031" OD (0.079mmø)  
Max. strip length ..... 1-1/2" (38mm)  
Min. strip length with standard strip length stop ..... varies from 3/16" (4.7mm) on a 28 AWG (0.33mmø) wire to 5/16" (7.9mm) on a 14 AWG (1.63mmø) wire

#### Ordering information

AR2171 (C100S) ..... 120V 60Hz  
AR2172 (C100S) ..... 220/240V 50Hz European plug  
See page 27 for wire guide selection and optional parts.

### C200 & C300 Wire Strippers



Strips most insulation from solid and stranded wires, Teflon, P.T.F.E., PVC, nylon, rubber, KEL-F, miniature coax, coaxial cables, shielded wires and cables.

#### Specifications

Max. wire size over insulation ..... 0.265" OD (6.73mmø)  
Min. wire size over insulation ..... 0.028" OD (0.071mmø)  
dep. on wire rigidity  
Max. conductor dia ..... 0.219" OD (5.5mmø)  
Max. strip length (w. strip stop) ..... 2-1/2" (63.5mm)  
Max. strip length (w/o strip stop) ..... dep. on wire or cable  
Min. strip length 1/32" (.79mm), dep. on insulation thickness

#### Ordering information

AR4901 (C200) ..... single head stripper, 120V 60Hz  
AR4902 (C200) ..... single head stripper, 220/240V 50Hz  
  
AR9501 (C300) ..... triple head stripper, 120V 60Hz  
AR9502 (C300) ..... triple head stripper, 220/240V 50Hz  
See page 27 for wire guide selection and optional parts.

## LS10, LSR10 & LSS10 Cable Strippers



Hand operated with blades that are quickly changed and adjusted, these strippers provide a clean strip in one simple motion.

### Specifications

Max. diameter of conductor (all) ..... 1.120" OD (30.5mmø)  
Max. diameter of jacket (LS10) ..... 1.25" OD (31.8mmø)  
Max. diameter of jacket (LSR10) ..... 1.06" OD (26.9mmø)  
Max. strip length\*(all) ..... 3 3/8" (86.4mm)

### Ordering information

AR0240 (LS10) ..... standard cable clamps  
AR0260 (LSR10) ..... rubber covered cable clamps  
to prevent marking the cable

See page 25 for die blade selection.

*\*Strip length maximum is for one cycle of the machine. Dependent on cable type and size, strip length may be increased by cycling the machine more than once.*

## LSA20 & LSAR20 Cable Stripper



These air-operated units are for precise wire and cable stripping, with blade options available to cover most applications.

### Specifications

Max. diameter of conductor ..... 1.20" OD (30.5mmø)  
Max. diameter of jacket ..... 1.25" OD (31.8mmø)  
Max. strip length\* ..... 3 3/8" (86.4mm)  
Operation ..... air operated, 90 P.S.I.

### Ordering information

AR6800 (LSA20) ..... standard serrated cable clamps  
AR6700 (LSAR20) ..... with rubber covered cable clamps  
to prevent marking the cable

### Optional Parts

PR0003 ..... air filter, regulator and lubricator  
PR3623 ..... six-foot air hose with quick disconnect  
See page 25 for die blade selection.

*\*Strip length maximum is for one cycle of the machine. Dependent on cable type and size, strip length may be increased by cycling the machine more than once.*



## BTS1 Thermal Wire Stripper



With a variable temperature setting, this stripper is ideal for use on solid and stranded wires, and small cables.

### Specifications

Wire size ..... up to 1/2" OD (12.7mmø)  
Min. wire size.....36 AWG (0.13mmø)  
Max. strip length ..... 1-1/2" (38mm),  
or unlimited with optional 90° element adapters

### Ordering information

AR0111 (BTS1) ..... 120V 60Hz  
AR0112 (BTS1) ..... 220V/240V 50Hz

### Optional Parts

IR1479 ...right angle adaptor kit for unlimited strip lengths  
IR1473 ..... one pair of replacement elements  
IR1474 ..... small die element set (.050", .080", .102" dia.)  
IR1475 ..... large die element set (.120", .140", .160" dia.)  
IR1491 ..... foot switch  
AR6701.....FE1 Fume Extractor, 120V 50/60Hz  
AA0004.....Brass Eraser Brush to clean elements

## HTS1 & HTS2 Thermal Wire Stripper



Lightweight, hand-held tools are cradle or foot switch activated with low cost replaceable elements.

### Specifications

Wire size (HTS1) .....1/2" to 43AWG (12.7 - 0.056mmø)  
Strip length ..... up to 1" (25.4mm)

### Ordering information

AR0121 (HTS1F) ... Foot switched activated, 120V 50/60Hz  
AR0122 (HTS1F) .....Foot switch activated, 220V 50/60Hz  
AR0131 (HTS1C) ..... Cradle activated, 120V 50/60Hz  
AR0132 (HTS1C) ..... Cradle activated, 220V 50/60Hz

### Specifications

Wire size (HTS2) ..... 18 to 43AWG (1.02 - 0.056mmø)  
Strip length ..... up to 1" (25.4mm)

### Ordering information

AR0141 (HTS2F) ..... Foot switch activated, 120 50/60Hz  
AR0142 (HTS2F) ..... Foot switch activated, 220 50/60Hz  
AR0151 (HTS2C) ..... Cradle activated, 120 50/60Hz  
AR0152 (HTS2C) ..... Cradle activated, 220V 50/60Hz  
All units have IR5023 un-notched elements installed  
See page 26 for elements and optional parts.

## FE1 Fume Extractor



Used to extract fumes or smoke during thermal stripping, soldering or de-soldering operations.

### Specifications

Airflow ..... 105 CFM (49 liters per second) at 60Hz  
Filter.....Activated carbon-impregnated

### Ordering information

AR6701 (FE1) .....fume extractor, 120V 50/60Hz

### Optional Parts

IR8943 .....Pack of 3 replacement filters

## Magnet/Enamel Wire Strippers

### L2AS Bench Wire Stripper



For fast, clean removal of most film insulation from round wire, including enamel, Formvar, ML, armored polythermaleze, and epoxy.

#### Specifications

Wire size ..... 8 to 4 AWG (3.25mm to 5.18mmø)  
Max. strip length ..... 1-1/2" (38mm),  
1-5/16" (33.3mm) with strip length stop

#### Ordering information

AR2071 (L2AS) ..... 120V 60Hz  
AR2072 (L2AS) ..... 220/240V 50Hz, European plug

See page 28 for insert selection.

### L2S Bench Wire Stripper



In addition to removing film insulation, the L2S can deflash wires and clean pins on transformers and coils.

#### Specifications

Wire size ..... 29 to 8 AWG (0.28mm to 3.25mmø)  
Max. strip length ..... 3-1/2" (89mm),  
1-5/16" (33.3mm) with strip length stop  
Component lead diameter ..... 0.0112" to 0.114" OD  
(0.28mm to 2.90mmø)  
Max. cleaning length ..... 2-1/2" (63.5mm)  
Close-up cleaning ..... flush with component body or  
length stop permits precise cleaning of only part of lead

#### Ordering information

AR2051 (L2S) ..... 120V 60Hz  
AR2052 (L2S) ..... 220/240V 50Hz, European plug

See page 28 for insert selection.

### L1 Magnet Wire Stripper



The L1 wire stripper removes film insulations including enamel, Formvar, ML, armored poly-thermaleze, and epoxy from round wires.

#### Specifications

Max. material size ..... 29-13AWG(.28-1.82mmø)  
Max. strip length ..... 3-1/2" (89mm)  
[1-5/16" (33.3mm) with strip length stop]  
Cleaning length ..... Up to 2 1/2" (63.5mm)

#### Ordering information

AR2041 (L1) ..... 120V, 60Hz  
AR2042 (L1) ..... 220V

See page 28 for insert selection.

### PL3S Portable Wire Stripper



The PL3S uses a high-speed rotating insert on a flexshaft to strip insulation from the surface of round wires.

#### Specifications

Wire size ..... 29 to 14 AWG (0.28mm to 1.63mmø)  
Max. strip length ..... 1-3/8" (34.9mm)  
no strip length stop available

#### Ordering information

AR2061 (PL3S) ..... 120V 60Hz  
AR2062 (PL3S) ..... 220/240V 50Hz, European plug

See page 28 for insert selection.

## RT2S Magnet Wire Stripper



In addition to insulation stripping, the RT2S can clean and remove oxidation from leads as small as 0.001" in diameter.

### Specifications

Max. wire size ..... 28 AWG (0.33mmØ)  
Min. wire size ..... 48 AWG (0.03mmØ)  
Strip length ..... unlimited  
Close-up stripping ..... within 1/8" to 3/16"  
(3.2mm to 4.76mm) dep. on size of coil body  
Component lead diameter ..... 0.0012" to 0.013" OD  
(0.03 to 0.33mm)  
Component lengths ..... infinite, will clean to within  
1/8" (3.2mm) of component body

### Ordering information

AR0221 (RT2S) ..... 120V 60Hz  
AR0222 (RT2S) ..... 220/240V 50Hz, European plug  
Contact customer service or website for wheel selection.

## R1S Magnet Wire Stripper



Fybrglass wheels make stripping quick and easy by softening wire insulation; wire wheels available for tougher applications.

### Specifications

Max. wire size ..... 24 AWG (0.33mmØ)  
Min. wire size ..... 45 AWG (0.046mmØ)  
Max. strip length ..... unlimited  
Close-up stripping  
A size wheels... within 5/16" (8mm) dep. on coil body size  
B size wheels ..... within 3/8" (10mm) of coil body  
BEV size wheels ..... within 5/16" (8mm) of coil body

### Ordering information

AR2131 (R1S) ..... 120V 60Hz  
AR2132 (R1S) ..... 220/240V 50Hz, European plug  
Contact customer service or website for wheel selection.

## DCF Multi-voltage Wire Strippers



These variable-speed units are ideal for production and repair stripping of armatures, coils, chokes, transformers, relays, and solenoids.

### Specifications for DCF1, DCF2/3, DCF4

Model ..... Wire size  
DCF1 ..... 35 to 15 AWG (0.14mm to 1.45mmØ)  
DCF2/3 ..... 32 to 12 AWG (0.20mm to 2.06mmØ)  
DCF4 ..... 29 to 9 AWG (0.28mm to 2.90mmØ)  
Strip length  
without strip length stop ..... 0 to 2-1/2" (64mm)  
with strip length stop ..... 3/32" to 1-9/16"  
(2.38 to 39.69mm)  
with motor armature drilled ..... infinite  
max. wire size 13 AWG (1.83mmØ)  
Power source ..... multi-voltage 120/220/240V 50/60Hz

### Ordering information for DCF1

AR4500 (DCF1) ..... stripper, drilled multi-volt power unit  
AR4501 (DCF1) ..... stripper, multi-voltage power unit  
AR4300 (DCF2/3) ..... stripper, drilled, multi-volt power unit  
AR4301 (DCF2/3) ..... stripper, multi-voltage power unit  
AR4400 (DCF4) ..... stripper, drilled multi-volt power unit  
AR4401 (DCF4) ..... stripper, multi-voltage power unit

IR7000 ..... multi-voltage power unit and bench holder only

## DCFR Stripper for Magnet Wire



Uses a rotating carbide rasp head to strip square, rectangular, flat magnet or enamel wire insulation.

### DCFR Specifications

DCFR Single Voltage Units ..... Wire sizes  
Wire size ..... Strip to max. square section 3/4" (19mm)  
Strip length ..... unlimited  
DCFR Power source ..... multi-voltage 120/220/240V  
50/60Hz

### Ordering information for DCFR

AR4801 (DCFR) ..... stripper, with multi-voltage power supply unit







**Heavy duty wire strippers for demanding applications and production line stripping of large magnet, enamel and film insulated wires.**

**Wire size** ..... 20 to 1 AWG (0.81mm to 7.34mmø)  
**Max. square wire size**..... 1/4" x 1/4" (6.35mm x 6.35mm)  
**Rectangular wire**  
     max. wheel opening ..... 1/4" (6.35mm)  
     max. material width ..... 2" (50.8mm)  
**Strip length w. mini stop** ..... 1/2" to 2-3/4"  
   (12.7mm to 69mm)  
**Strip length w. reg. stop** ..... 1" to 3-1/2"  
   (25.4mm to 89mm)  
**Dust takeoff port** ..... 1-5/8" ID (42mmø), 2" OD (51mmø)

AR1111 (E200) ..... 120V 60Hz, counter-rotating wheels

BR1501..... DC2 dust collector  
*Contact customer service or website for wheel selection.*

**The  
air-operated  
K8A uses a  
four-blade  
head to strip  
either extruded  
wires, or  
magnet and  
enamel wires.**

Extruded wires and built-up insulation  
Wire size ..... 38 to 8 AWG (0.10mm to 3.25mmø)  
or up to 3/8" OD (9.5mmø)  
Strip length ..... up to 1-3/8" (34mm)  
Film insulated and magnet wires  
Wire size ..... 28 to 11 AWG (0.33mm to 2.31mmø)  
Strip length ..... up to 1-3/8" (34mm),  
infinite strip lengths possible if length stop is removed

AR1641 (K8A)..... 120V 60Hz, 90 PSI  
See page 26 for blade selection.



**Model 824****Cutter head (one required)**

RI3040	..... for use on single level semi-rigid
RI3041	..... for use on two level semi-rigid
RI3043	..... for use on two level coax
RI3042	..... for use on single level coax
RI3044	..... for use on two level coax (braid exposed)
RI3045	..... for use on three level coax
RI2047	..... for strip length of 0.070" (1.78mm) or less between blades
RI2056	..... for UV or V size hole

**Optional Parts**

RI5000	..... additional standard battery w/o charger
RI2040	..... additional standard battery w/110V trickle charger
RI0056	..... AC to DC power supply 120V 60Hz
RI0057	..... AC to DC power supply 220/230V 50Hz, European plug
RP5710	..... trickle charger, 110V 60Hz
RP2036	..... trickle charger, European plug
RI0091	..... rapid charger, 110V 60Hz
RI6711	..... replacement blade
RI3339	..... replacement blade
RI6713	..... Set of 3 replacement blades

**Model 1256****Cutter head (one required)**

RI4040	..... for use on single level semi-rigid
RI4041	..... for use on two level semi-rigid
RI4042	..... for use on single level coax
RI4043	..... for use on two level coax
RI4044	..... for use on two level coax (braid exposed)
RI4045	..... for use on three level coax
RI2057	..... for strip length of 0.070" (1.78mm) or less between blades
RI2053	..... for UV or V size hole
RI1040	..... quick release coupling

**Optional Parts**

RI6711	..... replacement blade
RI3339	..... replacement blade
RI6713	..... Set of 3 replacement blades

**HTS1 & HTS2 Thermal Wire Strippers****Optional Parts**

IR5023	..... replacement set un-notched elements
IR1399	..... small die element set (22, 24, 26, 28, 30AWG)
IR1405	..... large die element set (14, 16, 18, 20AWG)
AR6701	..... FE1 fume extractor, 120V 50/60Hz
AA0004	..... Brass Eraser brush to clean elements

**LS10, LSR10, LSS10,  
LSA20 & LSAR20****Die blade selection (one required)**

	<i>Diameter of die</i>
IR1702	..... parallel blades
IR1728	..... < 0.030" OD (< 0.76mmø)
IR1728	..... 0.029-0.042" OD (0.74-1.07mmø)
IR1728	..... 0.043-0.050" OD (1.09-1.27mmø)
IR1707	..... 0.063-0.074" OD ( 1.60-1.88mmø)
IR1708	..... 0.075-0.102" OD (1.91-2.59mmø)
IR1709	..... 0.103-0.123" OD (2.62-3.12mmø)
IR1710	..... 0.124-0.142" OD (3.15-3.61mmø)
IR1711	..... 0.143-0.183" OD (3.63-4.65mmø)
IR1712	..... 0.184-0.208" OD (4.67-5.28mmø)
IR1713	..... 0.209-0.237" OD (5.31-6.02mmø)
IR1714	..... 0.238-0.285" OD (6.05-7.24mmø)
IR1715	..... 0.286-0.327" OD (7.26-8.31mmø)
IR1716	..... 0.328-0.370" OD (8.33-9.40mmø)
IR1717	..... 0.371-0.416" OD (9.42-10.57mmø)
IR1718	..... 0.417-0.448" OD (10.59-11.38mmø)
IR1719	..... 0.449-0.495" OD (11.40-12.57mmø)
IR1720	..... 0.496-0.558" OD (12.60-14.17mmø)
IR1721	..... 0.559-0.620" OD (14.20-15.75mmø)
IR1722	..... 0.621-0.714" OD (15.77-18.14mmø)
IR1723	..... 0.715-0.792" OD (18.16-20.12mmø)
IR1724	..... 0.793-0.870" OD (20.14-22.10mmø)
IR1725	..... 0.871-0.948" OD (22.12-24.08mmø)
IR1726	..... 0.949-1.026" OD (24.10-26.06mmø)
IR1727	..... 1.027-1.120" OD (26.09-28.45mmø)
IR1728	..... custom blade set

**Optional Parts**

IR8371	..... table and clamp assembly
IR1507	..... length stop



## C100S

### Wire guide selection (one required)

	<i>Outside diameter of wire</i>
IR8701 .....	0.233-0.216" (5.92-5.49mm)
IR8702 .....	0.215-0.208" (5.46-5.28mm)
IR8704 .....	0.203-0.201" (5.16-5.11mm)
IR8705 .....	0.200-0.196" (5.08-4.98mm)
IR8706 .....	0.195-0.191" (4.95-4.85mm)
IR8707 .....	0.190-0.186" (4.83-4.72mm)
IR8708 .....	0.185-0.181" (4.69-4.59mm)
IR8709 .....	0.180-0.175" (4.57-4.45mm)
IR8710 .....	0.174-0.168" (4.42-4.27mm)
IR8711 .....	0.167-0.164" (4.24-4.17mm)
IR8712 .....	0.163-0.156" (4.14-3.96mm)
IR8713 .....	0.155-0.151" (3.94-3.84mm)
IR8714 .....	0.150-0.144" (3.81-3.66mm)
IR8715 .....	0.143-0.139" (3.63-3.53mm)
IR8716 .....	0.138-0.135" (3.51-3.43mm)
IR8717 .....	0.134-0.131" (3.40-3.33mm)
IR8718 .....	0.130-0.120" (3.30-3.05mm)
IR8719 .....	0.119-0.115" (3.02-2.92mm)
IR8720 .....	0.114-0.111" (2.90-2.82mm)
IR8721 .....	0.110-0.106" (2.79-2.69mm)
IR8722 .....	0.105-0.101" (2.67-2.57mm)
IR8723 .....	0.100-0.096" (2.54-2.44mm)
IR8724 .....	0.095-0.091" (2.41-2.31mm)
IR8725 .....	0.090-0.084" (2.29-2.13mm)
IR8726 .....	0.083-0.077" (2.11-1.96mm)
IR8727 .....	0.076-0.073" (1.93-1.85mm)
IR8728 .....	0.072-0.068" (1.83-1.73mm)
IR8729 .....	0.067-0.062" (1.70-1.57mm)
IR8730 .....	0.061-0.057" (1.55-1.45mm)
IR8731 .....	0.056-0.050" (1.42-1.27mm)
IR8732 .....	0.049-0.041" (1.24-1.04mm)
IR8733 .....	0.040-0.037" (1.02-0.94mm)
IR8734 .....	0.036-0.034" (0.91-0.86mm)
IR8735 .....	0.033-0.030" (0.84-0.76mm)
IR8736 .....	0.029-0.026" (0.74-0.66mm)
IR8737 .....	0.025-0.020" (0.64-0.51mm)

### Optional parts

IR8190 .....	complete set of 37 wire guides in plastic box
IR4655 .....	standard 50° blade with pivot pin
IR4660 .....	blade for thin or film insulation
IR7978 .....	special short blade for very fine fragile wires

## K8A

### Blade selection (one required)

IR0318 .....	strips wire 38-8 AWG (0.10-3.25mmø) for hard or thin insulation
IR0319 .....	strips wire 11-15 AWG (2.31-1.45mmø)
IR0321 .....	strips wire 16-20 AWG (1.30-0.81mmø)
IR0323 .....	strips wire 25-28 AWG (0.46-0.33mmø)
IR0324 ...	custom stripping blades, send material for sizing
IR0337 .....	strips wire 38-8 AWG (0.10-3.25mmø) or up to 3/8" OD (9.5mmø) for thick or slippery insulation
NR3210.....	custom diamond tipped blades

### Optional Parts

PR0003 .....	air filter, regulator and lubricator
--------------	--------------------------------------

## C200 & C300

### Wire guide selection

	<i>Outside diameter of wire</i>
IR2301 .....	0.022-0.020" OD (0.56-0.51mmø)
IR2302 .....	0.029-0.023" OD (0.74-0.58mmø)
IR2303 .....	0.036-0.030" OD (0.91-0.76mmø)
IR2304 .....	0.046-0.037" OD (1.17-0.94mmø)
IR2305 .....	0.056-0.047" OD (1.42-1.19mmø)
IR2306 .....	0.064-0.057" OD (1.63-1.45mmø)
IR2307 .....	0.072-0.065" OD (1.83-1.65mmø)
IR2308 .....	0.083-0.073" OD (2.11-1.85mmø)
IR2309 .....	0.095-0.084" OD (2.41-2.13mmø)
IR2310 .....	0.105-0.096" OD (2.67-2.44mmø)
IR2311 .....	0.119-0.106" OD (3.02-2.69mmø)
IR2312 .....	0.130-0.120" OD (3.30-3.05mmø)
IR2313 .....	0.143-0.131" OD (3.63-3.33mmø)
IR2314 .....	0.155-0.144" OD (3.94-3.66mmø)
IR2315 .....	0.167-0.156" OD (4.24-3.96mmø)
IR2316 .....	0.185-0.168" OD (4.70-4.27mmø)
IR2317 .....	0.199-0.186" OD (5.05-4.72mmø)
IR2318 .....	0.215-0.200" OD (5.46-5.08mmø)
IR2319 .....	0.228-0.216" OD (5.79-5.49mmø)
IR2320 .....	0.240-0.229" OD (6.10-5.82mmø)
IR2321 .....	0.251-0.241" OD (6.38-6.12mmø)
IR2322 .....	0.260-0.252" OD (6.60-6.40mmø)

### Optional Parts

IR0085 .....	Set of all 22 wire guides
IR1071 .....	titanium nitrate coated replacement blade
IR8631 .....	set of two replacement carbide blades
IR8632 .....	set of six replacement carbide blades
IR0703 .....	complete faceplate assembly

TR0705.....	replacement alignment tool for C200 and C300
-------------	---

## L1, L2S, L2AS, L4, L4A, PL3S

### Insert selection (one required)

Wire Size	Heavy Duty Grade Inserts			Machine Used On
	Concave Face	Flat Face	Bullet Nose	
29-24 AWG (0.28-0.51mmø)	L30HC-IR1951	L30HF-IR1961	L30HB-IR1981	L1, L2S, PL3S, L4
24-20 AWG (0.51-0.81mmø)	L35HC-IR1952	L35HF-IR1962	L35HB-IR1982	
20-16 AWG (0.81-1.30mmø)	L31HC-IR1953	L31HF-IR1963	L31HB-IR1983	
15-13 AWG (1.45-1.83mmø)	L33HC-IR1954	L33HF-IR1964	L33HB-IR1984	
13-11 AWG (1.83-2.31mmø)	L38HC-IR1955	L38HF-IR1965	L38HB-IR1985	L2S, L4
11-9 AWG (2.31-2.90mmø)	L34HC-IR1956	L34HF-IR1966	L34HB-IR1986	
9-8 AWG (2.90-3.25mmø)	L37HC-IR1957	L37HF-IR1967	N/A	
8-6 AWG (3.25-4.11mmø)	L39HC-IR1958	L39HF-IR1968	N/A	L2AS, L4A, IR0106
5-4 AWG (4.62-5.18mmø)	L40HC-IR1959	L40HF-IR1969	N/A	

Wire Size	Carbide Tipped Inserts			Diamond Tipped Insert	Machine Used On
	Concave Face	Flat Face	Bullet Nose	Flat Face	
29-24 AWG (0.28-0.51mmø)	L30CC-IR9007	L30CF-IR9008	L30CB-IR9009	N/A	L1, L2S, PL3S
24-20 AWG (0.51-0.81mmø)	L35CC-IR9017	L35CF-IR9018	L35CB-IR9019	N/A	
20-16 AWG (0.81-1.30mmø)	L31CC-IR9027	L31CF-IR9028	L31CB-IR9029	N/A	
15-13 AWG (1.45-1.83mmø)	L33CC-IR9037	L33CF-IR9038	L33CB-IR9039	L33DF-IR9040	
13-11 AWG (1.83-2.31mmø)	L38CC-IR9047	L38CF-IR9048	L38CB-IR9049	N/A	L2S, IR0104, L4
11-9 AWG (2.31-2.90mmø)	L34CC-IR9057	L34CF-IR9058	N/A	L34DF-IR9060	
9-8 AWG (2.90-3.25mmø)	N/A	N/A	N/A	N/A	
8-6 AWG (3.25-4.11mmø)	N/A	N/A	N/A	N/A	L2AS, L4A, IR0106
5-4 AWG (4.62-5.18mmø)	N/A	N/A	N/A	N/A	

From our patented Glo-Ring™ infrared heating technology to a wide range of ceramic heating units for industrial applications, Eraser offers a comprehensive line of heating equipment. All provide effective heating performance that is quick, quiet and energy efficient. The Glo-Ring is perfect for heat shrinking, plastic tube bending, soldering, adhesive curing, solder preforms, and butt welding.

## Triple Element Bench Glo-Ring



For shrinking long length of heat shrink tubing and other applications, this bench Glo-Ring has roller guides to keep the work piece centered within the heating elements.

### Specifications

Heat source .....quartz encapsulated heating elements  
 Temperature range ..... adjustable to 1,500°F (815°C)  
 Heating elements .....open and close around material using hand switch or foot pedal

### Ordering information

AH2711 (Triple Element Glo-Ring)..... 120V 60Hz  
 IH0129 (Foot activation switch) ... For bench Glo-Ring units

*Elements and guards are sold separately from unit.*

## Single Element Bench Glo-Ring



This unit is ideal for smaller production applications that require the stability and convenience of a bench machine. Perfect for clean room use.

### Specifications

Heat source .....quartz encapsulated heating elements  
 Temperature range ..... adjustable to 1,500°F (815°C)  
 Heating elements .....open and close around material using hand switch or foot pedal  
 (see "Continuous Elements" section for size options)

### Ordering information

AH2401 (Single Element Glo-Ring)..... 120V 60Hz  
 AH2402 (Single Element Glo-Ring)..... 220/240V 50Hz,  
 European plug

*Elements and guards are sold separately from unit.*

## Hand-Held Glo-Ring



Utilizing the same Glo-Ring technology as the triple- and single-element units, this portable tool can be taken to the production site for added convenience.

### Specifications

Heat source .....quartz encapsulated heating elements  
 Temperature range ..... adjustable to 1,500°F (815°C)  
 Heating elements .....open and close around material using hand switch  
 (see "Continuous Elements" section for size options)

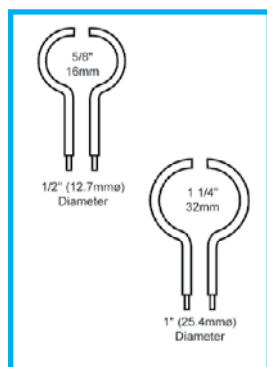
### Ordering information

AH2001 (Hand-Held Glo-Ring).....120V 50/60Hz,  
 with temp. control  
 AH2002 (Hand-Held Glo-Ring)..... 220/240V 50/60Hz,  
 European plug, with temp. control  
 AH1901 (Hand-Held Glo-Ring).....120V 50/60Hz  
 AH1902 (Hand-Held Glo-Ring)..... 220/240V 50/60Hz,  
 European plug

*Elements and guards are sold separately from unit.*

Available in various configurations, all Glo-Ring elements are designed for long-life and optimum performance. Intermittent are for hand-unit use; continuous for bench models.

### Elements & Wire Guards (1/2" & 1")



#### Ordering information

*Round, continuous, one pair*

IH6515 ..... 1/2" (12.7mm), 120V 50/60Hz

IH6516 ..... 1/2" (12.7mm), 220/240V 50/60Hz

IH5511 ..... 1" (25.4mm), 120V 50/60Hz

IH5521 ..... 1" (25.4mm), 220/240V 50/60Hz

*Round, intermittent, one pair*

IH3511 ..... 1/2" (12.7mm), 120V 50/60Hz

IH4511 ..... 1" (25.4mm), 120V 50/60Hz

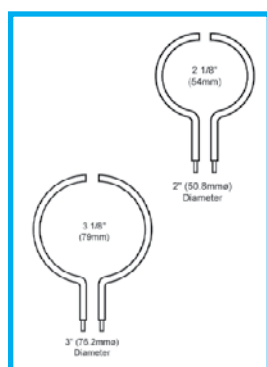
IH4521 ..... 1" (25.4mm), 220/240V 50/60Hz

*Round, wire guards, one pair*

IH6517 ..... for use with 1/2" element

IH3551 ..... for use with 1" element

### Elements & Wire Guards (2" & 3")



#### Ordering information

*Round, continuous, one pair*

IH5512 ..... 2" (50.8mm), 120V 50/60Hz

IH5522 ..... 2" (50.8mm), 220/240V 50/60Hz

IH5513 ..... 3" (76.2mm), 120V 50/60Hz

IH5523 ..... 3" (76.2mm), 220/240V 50/60Hz

*Round, intermittent, one pair*

IH4512 ..... 2" (50.8mm), 120V 50/60Hz

IH4522 ..... 2" (50.8mm), 220/240V 50/60Hz

IH4513 ..... 3" (76.2mm), 120V 50/60Hz

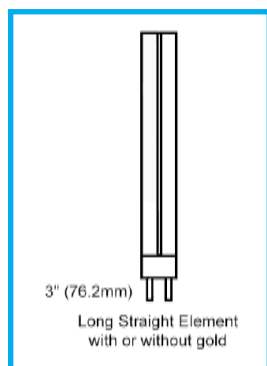
IH4523 ..... 3" (76.2mm), 220/240V 50/60Hz

*Round, wire guards, one pair*

IH3552 ..... for use with 2" element

IH3553 ..... for use with 3" element

### Elements & Wire Guards (3" Straight)



#### Ordering information

*Straight, intermittent, one pair*

IH0130 ..... 3" (76.2mm) without gold, 120V 50/60Hz

*Guards not available for straight elements.*

Typical applications for our versatile Lux-Therm line of infrared heaters include baking electrostatic paint finishes, plastics curing and forming, preheating before welding, stress relieving, drying, hot forming, fusing, surface treatment, aging, laboratory testing, paint removal and stripping, and paint curing.

## HL2 Lux-Therm Portable Infrared Heater



A high-intensity quartz lamp infrared heater perfect as an all-purpose shop, industrial, and production heat source, for a wide range of uses.

### Specifications

Output and heat source..... Two "push-in" 500W high-intensity tubular quartz heat lamp assemblies of 10" (254mm) overall length  
Rated average life.....5,000 hours (lamp assemblies must be in horizontal position)  
Response time ..... less than 5 seconds  
Surface temperature .....680°F (360°F) within 15 seconds  
Heat ranges..... low (one lamp activated)  
high (two lamps activated)

### Ordering information

AK1101 (HL2) .....120V 50/60Hz

### Optional parts

BK0001 ..... floor mounting tripod

## Ceramic Heaters



Ceramic heaters provide radiant heat for applications where controlling temperature range and zone is critical.

### Specifications

Standard wattages available .....250, 500, 800  
Standard sizes available ..... Concave and flat  
Square:

4.80" x 4.80" x 1.42" (122mm x 122mm x 36mm)

2.36" x 4.80" x 1.42" (60mm x 122mm x 36mm)

4.80" x 4.80" x 3.35" (122mm x 122mm x 85mm)

Rectangular:

2.36" x 9.65" (60mm x 245mm)

2.36" x 4.80" (60mm x 122mm)

Thermocouple...available with or without Type J or Type K

### Ordering Information

Contact Product Specialists for ordering details.

This chart shows the combinations of Luxtherm lamps that can be controlled simultaneously with the LX25 (AK0031) 120V 50/60Hz and 230V 50/60Hz.

Part #	AMP	No. of Units	No. of Units
	Rating	120V 50/60Hz	230V 50/60Hz
IK0015	4.3	5	
IK0021	4.2		5
IK0030	8.3		3
IK0027	6.7		3
CK0003	9	2	
CK0002	4.5		5
CK0004	4.5		5
CK0006	6.8		3
AK1101	8.3	2	4



Designed to work with a wide range of wire types and sizes, Eraser's line of twisters offers the highest quality and durability available. Whether used for an intensive industrial application or in a lighter production environment, our machines deliver consistent, quality twists each time.

## WT40 Automatic Wire Twister



Using holders that are custom made for each application, the WT40 can twist together several large wires, or pre-terminated wires.

### Specifications

Max. dia. of all wires .....not to exceed equiv. of three  
14 AWG (1.63mmø) wires  
Max. twist length ..... 20' (6.096M)  
Max. twist quantity ..... 9,999 twists per cycle  
Twist speed .....variable up to 26 turns per second

### Ordering information

AR4240 (WT40) .....120V 50/60Hz

## G10S Wire Twister



This bench unit is for twisting pre-stripped stranded wires, strands of two or more wires, or wrapped shields on coaxial cables.

### Specifications

Wire size ..... 26 to 12 AWG (0.41mm to 2.06mmø)  
based on twisting insert (see below)  
Max. twist length ..... 1" (25.4mm) dep. on spacers used  
Twisted pairs ..... not to exceed two 18 AWG (1.02mmø) wires  
*G10S comes with one set of three twist length spacers and one wire guide.*

### Ordering information

AR2161 (G10S) ..... 120V 60Hz  
AR2162 (G10S) ..... 220/240V 50 Hz European plug

### Optional Parts

Twisting Inserts  
IR8227 .....for wire 26 to 22 AWG (0.41 to 0.64mmø)  
IR8228 .....for wire 24 to 18 AWG (0.51mm to 1.02mmø)  
IR8229 .....for wire 18 to 12 AWG (1.02 to 2.06mmø)  
TR8223 .....replacement spacer 1/2" (12.7mm) thick  
TR8224 .....replacement spacer 1/4" (6.35mm) thick  
TR8225 .....replacement spacer 1/8" (3.18mm) thick  
IR8220 ..... replacement wire guide

## DCFT & DCFH Wire Twister



A lightweight, quick and easy to use hand held wire twister for twisting pairs or strands of wires.

### Specifications

DCFT .....Twist two wires 12 AWG (2.06mmø)  
DCFT Twist length ..... 2-1/2" (0.64mmø)

DCFH .....Twist two wires 20 AWG (0.81mmø)  
DCFH Twist length .....unlimited  
Hook length ..... 3/8" x 1/4" (10mm x 6.35mm)  
Power source ..... multi-voltage 120/220/240V 50/60Hz

### Ordering information

AR4601 (DCFT) ..... stripper, multi-voltage power unit  
AR4701 (DCFH) ..... stripper, multi-voltage power unit

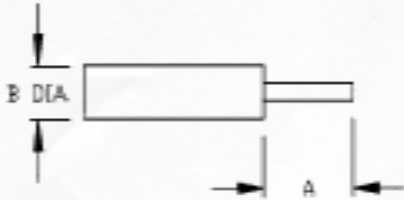
IR7000 .....multi-voltage power unit and bench holder only

For: Bench ☐ Hand ☐

To Process your stripping head order accurately please provide the following:

- The actual strip dimensions, the outside diameter (O.D.) of your cable and any tolerance requirements (if applicable)
- Use the appropriate diagram based on the number of strip levels required
- Specify inch or metric
- Please fill out your company's name, sign and date the form and fax it to 315-454-3090

If you have any questions concerning this form, please contact The Eraser Company at **800-724-0594**



\*A = \_\_\_\_\_

\*B = \_\_\_\_\_ Dia.

**ONE LEVEL**  
**COAX OR**  
**SEMI-RIGID**

\*Strip Dimensions



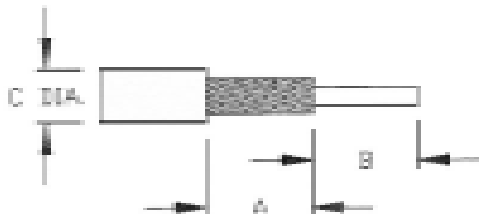
\*A = \_\_\_\_\_

\*B = \_\_\_\_\_

C = \_\_\_\_\_ Dia.

**TWO LEVEL**  
**(DIELECTRIC EXPOSED)**  
**COAX OR SEMI-RIGID**

\*Strip Dimensions



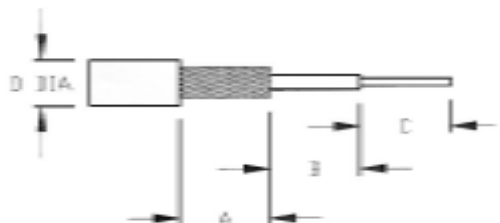
\*A = \_\_\_\_\_

\*B = \_\_\_\_\_

C = \_\_\_\_\_ Dia.

**TWO LEVEL**  
**(BRAID EXPOSED)**  
**COAX**

\*Strip Dimensions



\*A = \_\_\_\_\_

\*B = \_\_\_\_\_

\*C = \_\_\_\_\_

D = \_\_\_\_\_ Dia.

**THREE LEVEL**  
**COAX OR JACKETED**  
**SEMI-RIGID**

\*Strip Dimensions

Tolerance Required = +/- . \_\_\_\_\_ /Inch or Metric (Circle One)

Company Name: \_\_\_\_\_

Customer Signature: \_\_\_\_\_

Date: \_\_\_\_\_

**The Eraser Company, Inc.**

PO Box 4961 / Oliva Drive

Syracuse, NY 13221, USA

Phone: (315) 454-3237 / Fax: (315) 454-3090

Website: [www.eraser.com](http://www.eraser.com)

E-mail: [info@eraser.com](mailto:info@eraser.com)





CUSTOM PRODUCTS SPECIFICATION FORM

33

AVIONICS / AEROSPACE • AUTOMOTIVE • CONSUMER APPLIANCE •  
ELECTRICAL / ASSEMBLY • MEDICAL / DENTAL • ELECTRONICS • UTILITIES •  
PLASTICS • RECREATIONAL • TELECOMMUNICATIONS

The Eraser Company has provided solutions for many companies by modifying our existing products or designing a one-of-a-kind product tailored to your specifications using our Product Customization Service. ***We can help you too!*** Simply complete the form, include details of your production problem, and fax or mail it to the attention of our Custom Products Department.

Company Name\_\_\_\_\_

Contact\_\_\_\_\_ Email Address\_\_\_\_\_

Phone\_\_\_\_\_ Fax\_\_\_\_\_

Address\_\_\_\_\_

City\_\_\_\_\_ State\_\_\_\_\_ Zip\_\_\_\_\_ Country\_\_\_\_\_

If you require a signed Confidentiality Agreement before providing information about your project, please download a copy of the Non-Disclosure Agreement found on our website at [www.eraser.com](http://www.eraser.com). If the form is acceptable please fill in the blanks and fax or mail it to us. We will sign and return it to you immediately.

If this agreement is not acceptable and you have your own agreement, please fax, mail, or e-mail a copy to us for our review.

1. Please provide us with as MUCH DETAIL as possible regarding your Application, Idea or Concept.

2. Please provide a Separate Page with your Specification Drawing of the Application, Idea or Concept.

3. If you have Material Samples or Part Prototypes, please include them and send to:

**The Eraser Co. Inc.**  
**Product Customization Department**  
**123 Oliva Drive**  
**Mattydale, NY 13211**









The Eraser Company, Inc.  
PO Box 4961, Oliva Drive  
Syracuse, New York 13221 ~ USA

Toll Free: 800.724.0594 {USA & Canada only}  
Phone: 315.454.3237  
Fax: 315.454.3090  
eraser.com • info@eraser.com



**ERASER**

*Always Moving Forward®*