

UR5110 Polyurethane Resin

UR5110 is a two-part high performance encapsulation resin which has been developed primarily for encapsulation of delicate electronic and electrical components where conditions can be extreme and varied.

- Very low hardness; can be cut or 'dug out' for easy removal
- Meets UL94 V-0 for flame retardancy
- Flexibility at temperature extremes of -60 to +110°C; ideal for applications with varying temperatures
- Low moisture sensitivity during and after cure; excellent resistance to water

Approvals	RoHS Compliant (2015/863/EU):	Yes
	UL Approval:	Meets UL94 V-0

Typical Properties

Liquid Properties:	Base Material	Polyurethane
	Density Part A - Resin (g/ml)	1.51
	Density Part B - Hardener (g/ml)	1.35
	Part A Viscosity (mPa s @ 23°C)	10000
	Part B Viscosity (mPa s @ 23°C)	1000
	Mixed System Viscosity (mPa s @ 23°C)	5600
	Mix Ratio (Weight)	13.01:1
	Mix Ratio (Volume)	11.58:1
	Usable Life (20°C)	25 mins
	Gel Time (23°C)	40 mins
	Cure Time (23 °C)	24 hours
	Colour Part A - Resin	Off-white
	Colour Part B - Hardener	Dark blue
	Storage Conditions	Dry Conditions: Above 15°C, Below 30°C
	Shelf Life	12 months
	Exotherm (Measured on 100ml sample in a cylinder of diameter 49.4mm @ 23°C)	< 35°C
Cured System:	Thermal Conductivity (W/m.K)	0.25
	Cured Density (g/ml)	1.50
	Temperature Range (°C)	-60 to +110
	Max Temperature Range (Short Term (°C)/30 mins) (Application and Geometry Dependent)	+120
	Shore Hardness	A40
	Colour (Mixed System)	Dark Blue

Copyright Electrolube 2013

All information is given in good faith but without warranty. Properties are given as a guide only and should not be taken as a specification.

Electrolube cannot be held responsible for the performance of its products within any application determined by the customer, who must satisfy themselves as to the suitability of the product.

Ashby Park, Coalfield Way,
Ashby de la Zouch,
Leicestershire LE65 1JR

T +44 (0)1530 419 600

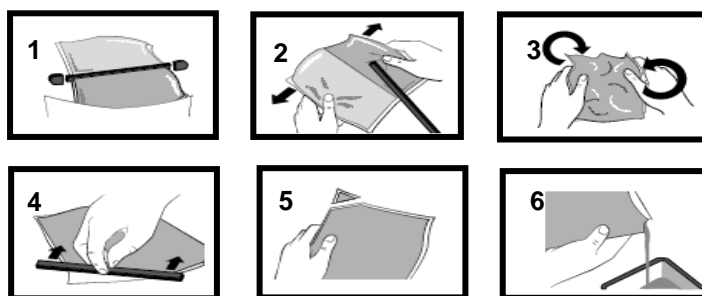
F +44 (0)1530 416 640

BS EN ISO 9001:2008
Certificate No. FM 32082

Mixing Procedures

Resin Packs

When in Resin pack form, the resin and hardener are mixed by removing the clip and moving the contents around inside the pack until thoroughly mixed. To remove the clip, remove both end caps, grip each end of the pack and pull apart gently. By using the removed clip, take special care to push unmixed material from the corners of the pack. Mixing normally takes from three to four minutes depending on the skill of the operator and the size of the pack. Both the resin and hardener are evacuated prior to packing so the system is ready for use immediately after mixing. The corner may be cut from the pack so that it may be used as a simple dispenser. There is also a YouTube video ([Polyurethane Mixing Instructions](#)) available on the Electrolube channel to show the mixing process.



Bulk Mixing

When mixing, care must be taken to avoid the introduction of excessive amounts of air. Automatic mixing equipment is available which will not only mix both the resin and hardener accurately in the correct ratio but do this without introducing air. Containers of Part A (Resin) and Part B (Hardener) should be kept sealed at all times when not in use to prevent the ingress of moisture. Bulk material must be thoroughly mixed before use. Incomplete mixing or use of the wrong mix ratio will result in erratic or partial curing.

General

Sedimentation of the resin has been minimised by careful attention to the formulation. However, any sediment which may have occurred over long periods of time must be dispersed before removing any material from the container. This dispersion can be carried out (if necessary) by stirring with a broad bladed spatula or gently rolling the can. Take care not to introduce excessive amounts of air during this operation or it may be necessary to re-evacuate the resin. Sedimentation will be accelerated by storage at high temperatures. Sedimentation found in resin packs forms no problem since the sediment is re-mixed when the pack is used.

Additional Information

- Cleaning:** It is far easier for machines & containers to be cleaned before the resin has been allowed to cure. Electrolube's RRS is suitable for cleaning machines and containers and cured resin may be slowly softened and removed by soaking in our RRS.
- Curing:** Do not heat cure large volumes immediately. Allow these to gel at room temperature and post-cure at high temperature if required (refer to liquid properties for details). Small volumes (250ml) may be heat cured immediately.
- Storage:** When storing under very cold conditions, the hardener may crystallise. If this occurs, simply warm (40°C) the container gently until all crystals have re-melted.
- Health & Safety:** Always refer to the Health & Safety data sheet before use. These can be downloaded from www.electrolube.com

Revision 3: Mar 2019

Copyright Electrolube 2013

All information is given in good faith but without warranty. Properties are given as a guide only and should not be taken as a specification.

Electrolube cannot be held responsible for the performance of its products within any application determined by the customer, who must satisfy themselves as to the suitability of the product.

Ashby Park, Coalfield Way,
Ashby de la Zouch,
Leicestershire LE65 1JR

T +44 (0)1530 419 600

F +44 (0)1530 416 640

BS EN ISO 9001:2008
Certificate No. FM 32082