

# Getting Started With Facecam Neo

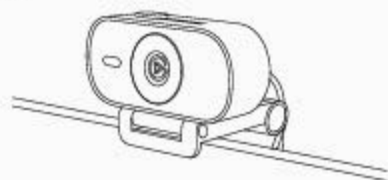


elgato 

# Setting up Facecam Neo

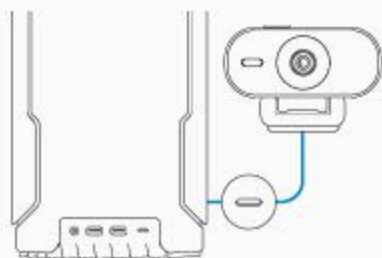
## Plug and play

1



Mount Facecam Neo on your monitor.

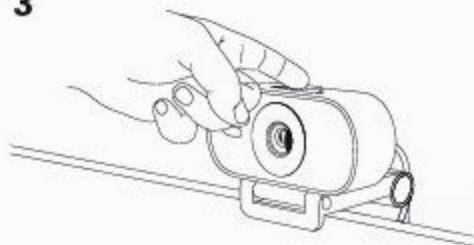
2



Simply connect Facecam Neo to a USB-C port on your computer and select your camera. You can also connect to a USB-A port using an adapter, not included.

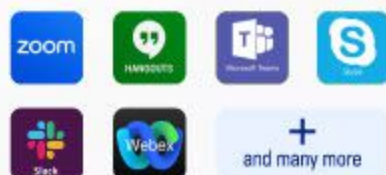
 Do not use a USB hub.

3



Slide open the privacy shutter.

4



Select Facecam Neo in your favorite streaming and video conferencing apps.

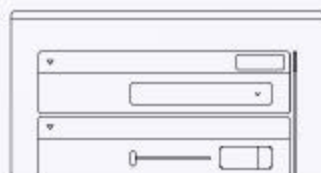
## DSLR-Style

1



Install the Elgato Camera Hub app.

2



Frame your shot, fine-tune your image, and enable HDR for impressive clarity in the harshest lighting conditions, like against bright office windows.

# Usage Recommendations

Three important elements lead to getting the best picture quality from Facecam Neo.



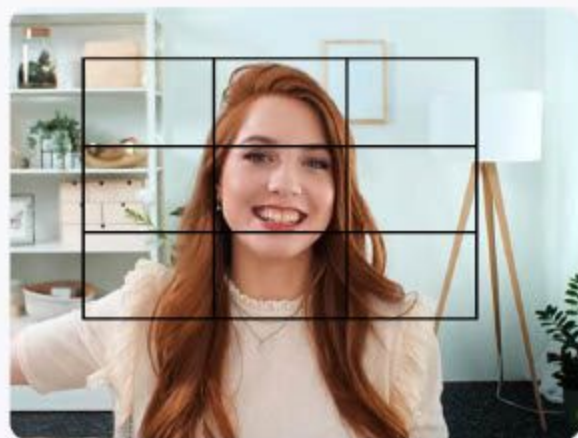
## Lighting

Ensure that proper lighting is used to illuminate your face from the side or front, and that you're in the center of the frame.



## Distance

Optimized for desktop setups, Facecam Neo features an autofocus lens which keeps you looking sharp and in-focus, no matter your moves.



## Framing

A combination of Facecam Neo placement, angle, and framing can make all the difference

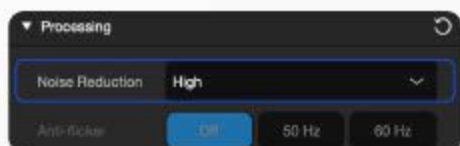
# Camera Hub Software

Camera Hub is custom designed to give you precise control of Facecam Neo settings such as exposure compensation, white balance, and shutter speed. Just like a DSLR.

Facecam Neo can also provide the ISO readout from the sensor. With this critical information, you have the feedback to increase the brightness of studio lighting if the ISO is too high.



To get the best possible image quality for Facecam Neo, make sure you keep an eye on these settings:



## Noise reduction

The noise reduction setting can help remove film grain when lighting conditions are not ideal. When in good lighting conditions, turn noise reduction off for a sharper image.



## Zoom

For better framing, the zoom function can be used. Note that the zoom is digital, meaning image quality will degrade as more zoom is applied. We recommend proper positioning of Facecam Neo and using as little zoom as possible.

# Better Together

Stream Deck gives you instant, tactile control of Facecam Neo settings. Zoom dramatically, change brightness for various lighting conditions, and more — with a tap of a key.



Instantly boost your production value by mounting Facecam Neo almost anywhere with Multi Mount.

