

ELMHURST ART MUSEUM

ART, EDUCATION & ARCHITECTURE

Exquisite Corpse



Karl Wirsum, Bucky Cortez Meets Downtown Roberto, 1984, Colored pencil on board, 2 pieces each 24" high.

In the 1960s, Suellen Rocca and five other artists formed the groundbreaking group, the Hairy Who, known for their powerfully graphic images and brazen sense of humor. This visionary group forged the way with others that later became known as the Chicago Imagists.

Over and over, the Chicago Imagists cast the figure in numerous roles, distorting it and layering it with metaphor and personal meaning. Outrageous, irreverent, humorous and inspired by popular culture, these works reflect highly original expressions of the human form. The exhibition, *The Figure and the Chicago Imagists: Selections from the Elmhurst College Art Collection*, featured over 30 works from the internationally known Elmhurst College Art Collection, focused on artists working in Chicago between about 1950 and the present.

This activity invites participants to playfully abstract their own characters through chance and collaboration. This popular surrealist game was used by Hairy Who artists to playfully create their own collaborative advertisements for their exhibitions and programs.

Check out our website for more information and images of *The Figure and the Chicago Imagists: Selections from the Elmhurst College Art Collection*. Share your creations and tag us on social media! #MuseumAtHome

Sincerely,

Joe Hladik, Director of Education & Grants Administrator



150 S Cottage Hill Ave, Elmhurst, IL 60126 · elmhurstartmuseum.org

ELMHURST ART MUSEUM

ART, EDUCATION & ARCHITECTURE

In the activity you will:

- Experiment with character construction
- Study the work of Hairy Who and the Chicago Imagists
- Collaborate with others
- Learn about abstraction
- Explore the figure



You will need:

- A piece of paper (8.5" x 11")
 - A template is included at the end of this document
- Pencil or pen
- Coloring supplies
 - Colored pencils, markers, and crayons work best
- Scissors
- Ruler (optional to help folding)

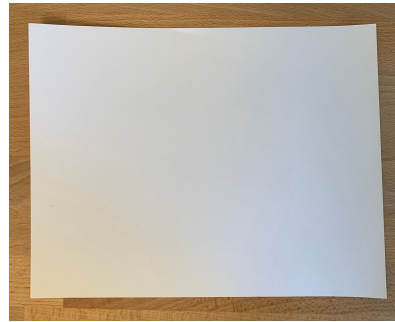


ELMHURST ART MUSEUM

ART, EDUCATION & ARCHITECTURE

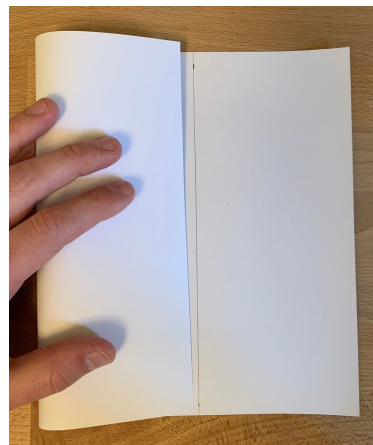
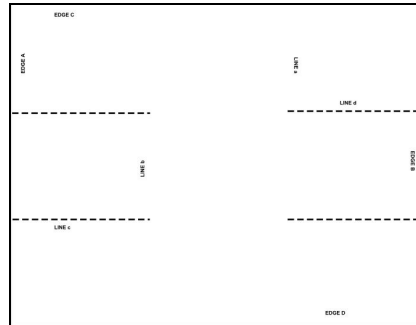
INSTRUCTIONS

1). Position the paper in front of you as a landscape, meaning the longer edges should be at the top and bottom of the paper.



2). Using the print-out template included in this document, fold your paper in thirds

- To do this, take the corner that is labeled “Edge A” and bring it to meet “line a”
 - Once you make a crease, unfold your paper
- Next, take the corner labeled “Edge B” and bring it to meet “line b”
 - Once you make the crease, unfold your paper

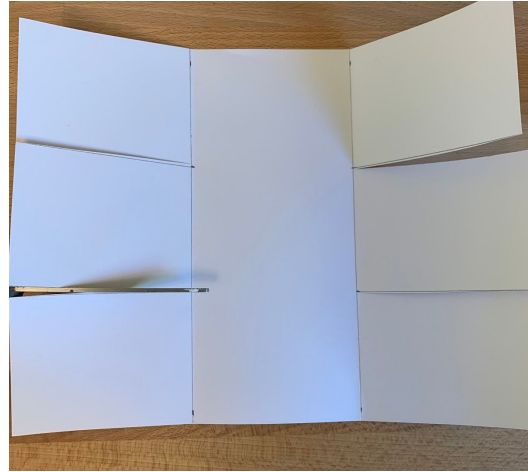


ELMHURST ART MUSEUM

ART, EDUCATION & ARCHITECTURE

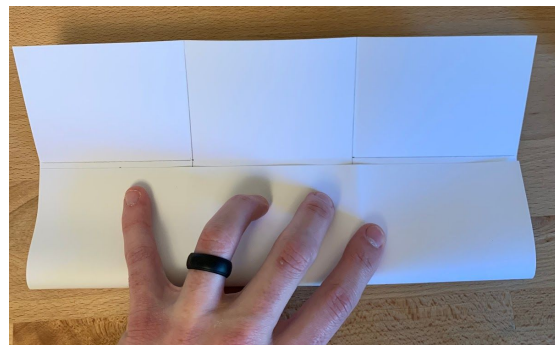
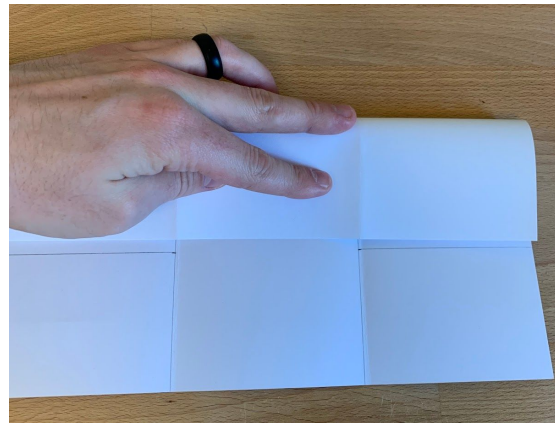
3). Once you have your paper with creases, carefully cut along the **dotted line**.

- Be sure to only cut to the end of the line, which should stop once it meets the crease you made
- Do this for all four lines



4). Next, bring the top edge of the paper (edge "C") to meet the second horizontal line (line "c")

- Press firmly to create a crease and unfold
- Repeat on the other side by bringing the bottom edge of the paper (edge "D") to meet the first line (line "d")
 - Press firmly to create a crease and unfold

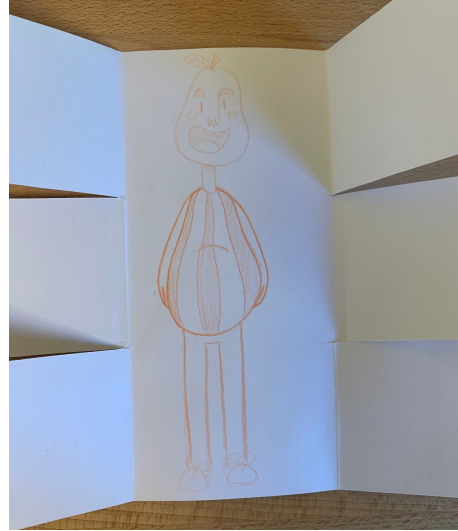


ELMHURST ART MUSEUM

ART, EDUCATION & ARCHITECTURE

5). With your page open, draw your first figure in the center column in three sections, head, upper body, and lower body

- Keep in mind that the base of the neck should end at the crease
- Next, draw upper body in the space below
 - Be sure to end the waist at the next crease
- Draw the lower body in the lowest space



6.) One by one, fold over flaps and draw a totally different character while making sure the neck and waist still line up with your original drawing

- Repeat on the other side
 - This can also be done with partners to add an element of surprise!

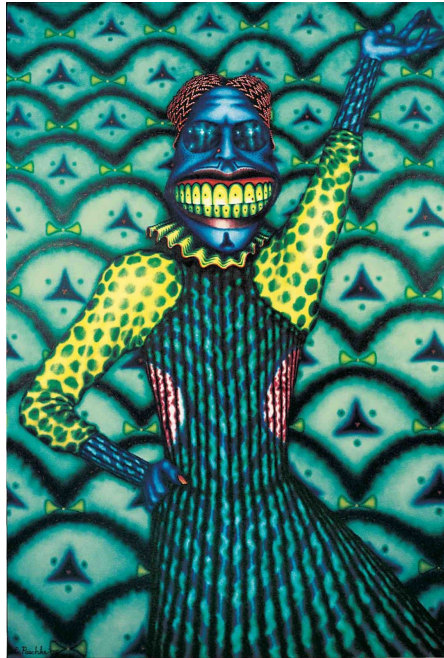


ELMHURST ART MUSEUM

ART, EDUCATION & ARCHITECTURE

Mix and match which flaps are open or closed to create your own abstracted figure!

- For more fun, work with a partner to draw different sections so that you can mix and match your ideas together to create your own collaborative figure!



Ed Paschke, Cobmaster, 1975, Oil on canvas, 74 x 50 in.

Please make sure to save all unused materials and tools, you may need to use them for other projects!



EDGE C

EDGE A



LINE b



LINE c

LINE a

LINE d



EDGE B



EDGE D