

# International Student Welcome Guide 2023/2024

## Paris Campus

 early makers  
since 1872



**em  
lyon**  
business  
school



# Table of contents

- A brief word from our president.....3
- Paris campus** .....3
  - Campus presentation.....3
  - Campus access.....4
- Immigration** .....5
  - First step: the visa.....5
  - Pre-Departure Checklist.....5
  - Validate your visa after arriving in France.....5
  - Renew your visa or residence permit.....5
- Housing in Paris** .....5
  - Living costs.....5
  - The accommodation Guide.....5
- Good deals** .....6
  - Culture.....6
  - French cuisine and restaurants.....6
  - World cuisine and neighbourhoods.....6
  - Solidary grocery stores.....6
  - Paris and its “marchés” .....6
  - Anti-waste food app.....6
- Life in France**.....7
  - LivinFrance.....7
  - Transportation.....7
  - Phone & Internet providers.....7
  - Banks and loans.....7
  - The Financial Aid Guide.....7
- Health and Insurance**.....8
  - The Health Insurance System.....8
  - Complementary health insurance.....8
  - Declaring a general doctor.....8
  - The “Carte Vitale” .....8
  - Third party liability insurance.....8
  - Emergency numbers.....8
  - Doctolib.....8
  - Third party liability Insurance.....8
  - International insurance.....8
- The Health and Wellbeing center**.....9
  - A psychological support and unit.....9
  - A medico-social team.....9
  - A disability, diversity and inclusion department...9
  - Workshops and talks.....9
  - Measures to fight discrimination and sexual and gender-based violence (SGBV).....9
- Campus administration** .....7
  - Administrative Registration (IAEL).....7
  - Student Card.....7
  - WIFI.....7
  - Campus Services.....10
  - On campus security.....10
- Your main contacts**.....11

# A brief word from our President

Dear International Students,  
Welcome to **emlyon** business school !

Triple accredited, **emlyon** is one of the best high-ranked institution!

You have decided to join **emlyon** business school as part of your studies abroad and I would like to congratulate you on joining us.

The Faculty and Administrative teams are deeply committed to offer you not only a unique high-quality educational experience but also a rich, stimulating and challenging new stage of your life.

This information pack will be your guide for months ahead and help you to integrate and complete the required procedures. In addition, The Student Services Center will be there to support you throughout your stay.

I am convinced that your experience with us will be determinant, full of success and fulfilment.

I thank you for your trust and wish you the best for your studies and your stay in France !

**Prof. Isabelle Huault**  
**Executive President & Dean**



## Paris Campus

### Campus presentation

Studying on an **emlyon** business school campus is a life experience filled with innovation. All campuses have a number of innovative tools for learning, exchanging and creating. An ultra-connected and innovative site, the Paris campus is located in the heart of Paris, next to "Gare de Lyon" train station. You can enjoy a [virtual tour of our Paris campus](#).

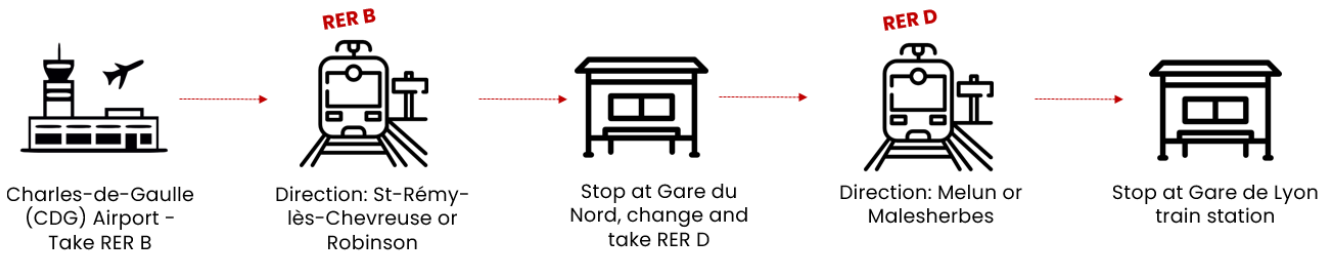


## Campus access

### From Charles-de-Gaulle (CDG) Airport to Paris Gare de Lyon station by train, bus or taxi

#### Option 1 : RER B and RER D

The whole trip takes about 1 hour and costs 10.30€. You can buy bus tickets via ticket machines by credit card or cash. More information [here](#).



#### Option 2 : RoissyBus

The whole trip takes about 60 minutes. The **RoissyBus** ticket costs 13.70€ and you will also need to purchase an **RATP** metro ticket (1.90€) for the second part of the journey. More info about the bus [here](#).



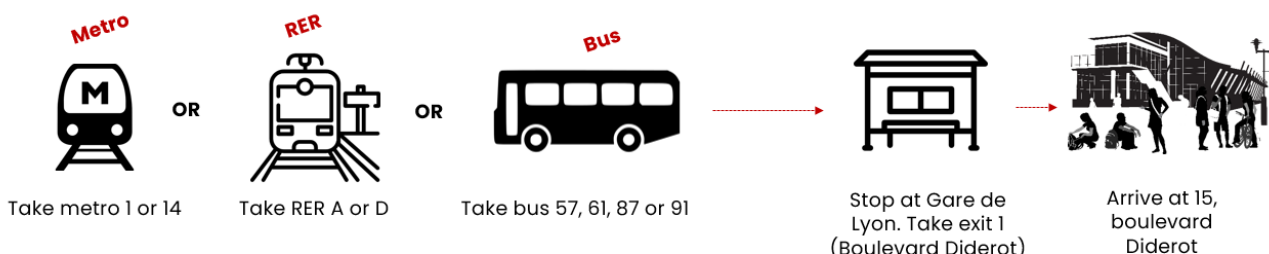
#### Option 3 : Taxi

There are taxis available at the airport. Make sure to take an official taxi, it will have an illuminated sign on top of the car. From the CDG airport to the city of Paris, it will cost a flat rate between 53€ and 58€. For other destinations in the suburbs, it will cost between 20€ and 90€. More information [here](#).

### Accessing the Paris campus

Centrally located right next to the **Gare de Lyon** train station, the Paris campus is easily accessible with **metro lines 1 and 14** and the **RER train lines A and D**. Located a short walk from Gare d'Austerlitz, the campus is also accessible via metro lines 5 and 10 and also via RER C. In addition to being highly walkable, the city's transport network includes many bus lines and a growing shared biking system.

You can plan your itinerary to come to **emlyon** business school from anywhere in Paris or Ile-de-France region directly on the [RATP](#) page.



# Immigration

## First step: the visa

If you are a national from the European Union, the EEA or Switzerland, you do not need to apply for a student visa.

Do you need a student visa for your stay in France? Check [here](#).

If you need a visa, please check if you are concerned by the pre-consular "Etudes en France" procedure [here](#). Find out more information about the pre-consular procedure "Etudes en France" on your [Makersboard](#), on the section "VISA application."

If you are not concerned by the "Etudes en France" pre-consular procedure, you will certainly need to apply directly through the French consulate. Check [here](#) how you will have to apply.

Please note that in any case, you must first be accepted to **emlyon** in order to apply for a visa. You will need to apply at least **3 months** before your estimated arrival in France.

## Pre-Departure Checklist

- **Passport (or ID cards for EU citizens)** and a scanned copy for safe-keeping.
- **An original birth certificate (in the original language).** This document is very important for administrative procedures in France. French administrative bodies prefer to see the original and make a copy themselves. As always, keep a scanned copy! You will have to get your birth certificate translated in France by a [certified translator](#).
- **European health insurance card (for EU citizens only)** valid for at least the full academic year (September 1st to August 31st).
- **Extra passport photos** taken under the same regulations as for the European passport.
- **Important medical record**, especially vaccination records.
- **Contact details** from home in case of an emergency.
- **Some cash for your arrival** since your credit card might not work in France. Please be careful and do not carry large amounts of cash.
- **A plug adaptor** if necessary. In France we use E type plugs with a 230V tension a 50Hz frequency.

## Validate your visa after arriving in France

If you **have a D-type Long stay visa** (CESEDA R311-3-6), you must validate your visa through [ANEF platform](#). Log in and follow the instructions.

The validation of your visa is mandatory and must be done **within the first 3 months after your arrival** in France.

A step by step tutorial is available on your student [Makersboard](#) in the section "Validate your visa."

If you are a national from the European Union, the EEA or Switzerland, you are not concerned by this procedure.

## Renew your visa or residence permit

If you are a non-EU student already in France, you may need to renew your visa or residence permit **from 4 months until maximum 2 months (60 days) before the expiration date of your current residence permit/visa**.

The procedure is entirely online, and the International Student Support team will pre-check your documents.

Please contact us directly.

- [internationaloffice75@em-lyon.com](mailto:internationaloffice75@em-lyon.com)

# Housing in Paris

Known internationally as one of the top luxury capitals in the world, Paris is also the cornerstone of culture, literature, arts and design. It has famous monuments, art exhibits, dance shows, music festivals and world-renowned museums.

With 12 million inhabitants, France's capital city is home to almost 19% of the country's total population. It is also the country's center of economic activity and accounts for about 30% of the French GDP. Paris is home to many international companies in the fields of media, entertainment, telecommunication, transportation and energy.

## Living costs

**Monthly budget: around 1300€-1500€**

- Rent : 800-1000€
- Charges (electricity, internet, water...): around 130€
- Transportation : 38€ for under 26 y.o. or 75,20€ for regular price
- Food : 200€
- Miscellaneous (insurances, clothing...) : 100€
- Mobile Phone : plans starting at 2€ (depends on provider)
- Entertainment : 100-200€

*Please note that this is a tentative budget which depends on your choice of accommodation and lifestyle.*

## New! The accommodation guide

It is not easy to find accommodation, especially in large French cities, so we have made a detailed guide with all the information you need !

Find the guide on [Makersboard](#) !

Download the guide [here](#) !

**Student accommodation :**

**Everything you need to know !**

Last updated : May 2023

early makers since 1872

emlyon business school

# Good deals

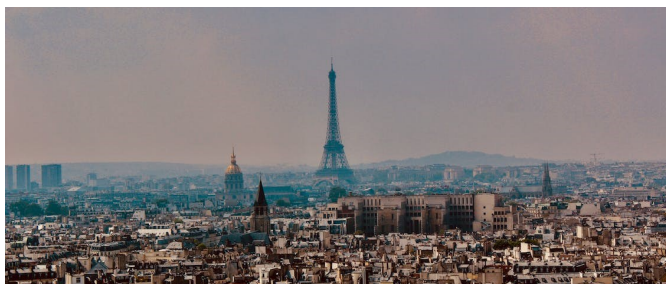
## Culture

Paris has a rich cultural offering (museums, festivals, theatres, monuments, parks) and it is renowned worldwide for its artistic scene and for its gastronomy.

In addition, there are many cost effective opportunities for students to enjoy the city's many cultural offerings.

Interested in discovering Paris ?

1. [The tourism office website](#)
2. [Affordable cultural opportunities for students](#)
3. [Kiosque Jeunes \(reduced prices for theatre and other shows\)](#)



## French cuisine and restaurants

**Good to know:** it is forbidden in France to drink alcohol or smoke before the age of 18.

You may want to go out and try the world-famous French cuisine. Say no more, we have quite the amount of famous restaurants and bars in Paris!

Interesting websites :

1. [The fork](#)
2. [Guide Michelin](#)



## World cuisine and neighbourhoods

Paris is a global city and this shows with regards to the wide variety of foods available. There are countless world cuisine restaurants, specialized markets, exotic grocery stores, street food shops and bakeries of all kinds.

More information [here](#).

There are also a [few neighbourhoods](#) where particular cultures are present: Turkey, Italy, Sub-Saharan Africa, China, South Korea and Japan, Vietnam and Southeast Asia, Middle East and North Africa. You can travel the world without leaving Paris!



## Solidarity grocery stores

Solidarity grocery stores sell products at a reduced cost compared to regular grocery stores or supermarket. However, you need to meet certain conditions to be able to have access to these prices.

Each solidarity grocery store has its own conditions of access so you always have to check them before going to one. Most of the time, conditions of access are based on your financial situation. You can see a social worker who can help you with this and guide you to the right store.

Here is a solidarity store for students in Paris: **AGORAé** It is located in the 13th district of Paris and is opened to all students. It is a place of share and exchange, a place of cooperation with the CROUS organism, a place of solidarity & health information, etc. You will find prices between 85% & 95% cheaper than in a regular supermarket.

**You will need to fill in a file of application** to get this service.

## Paris and its "marchés"

If you want to eat fresh and local at reasonable prices, then say no more and discover the local Parisian markets. In French we say "marché." You will find local food, drinks, flowers but also some specialized markets for books for example! It is also a good way to discover the city and the locals.

Click [here](#) to find your local "marché."



## Anti waste apps

Every year 10 million tons of food is either lost or wasted in the country, costing the French 16 billion euros per year. Fighting against food waste is thus a major challenge and it is clear that we can all make a difference in the way we shop and eat.

Here is a shortlist of anti-food-waste apps :

1. [Too Good to Go](#)
2. [Phenix](#)
3. [Zero Gaspi](#)



# Life in France

## LivingFrance

To make easy your arrival, we have made a partnership with [LivingFrance](#)

This platform will help you with all the process before and during your stay in France regarding procedures such as, your VISA, your accommodation, your administrative documents, your insurance, etc. To do this, simply create an account and follow the steps. The registration is entirely free.



## Transportation

### Metro-Bus-Tram

Public transport in the Paris region is organized by the [RATP](#). A student card called [ImagineR](#) is available for 38€ for those under the age of 26. Regular price is 75,20€. You can apply online after your arrival in France once you have completed your administrative registration.

### Train

The national train network is operated by [SNCF](#). A [discount card](#) is available for youths (ages 12-27). There is also an [unlimited travel card](#) for a monthly fee (ages 16-27). [Ouigo](#) runs a low-cost high-speed rail service in France.

### Bicycle & electric scooter

- The shared bicycle system in Paris is organized by [Vélib Métropole](#). Subscriptions are available for regular and electric bikes.
- Shared electric mopeds scooters are available through [Cityscoot](#) and [Lime](#) (Paris only).

### Car rental

Short term car rentals are also available with [ShareNow](#) (Paris only). You must be at least 18 years old and have had your driver's license for over a year.

### Carpooling and intercity buses

[Blablacar](#) is a famous French startup for carpooling. They also operate [intercity buses](#), which is an affordable way to travel around the country or even in Europe. Other main companies are [Flixbus](#) and [Eurolines](#).

## Phone & Internet providers

<b>ORANGE</b> and its low-cost company <b>SOSH</b>	<b>BOUYGUES TELECOM</b> and its low-cost company <b>B&amp;YOU</b>
<b>SFR</b> and its low-cost company <b>RED by SFR</b>	<b>FREE</b> : one of the newest telephone and Internet company in France.

## Banks and loans

### Banks

There are several banks in France. You can choose one with an agency or an all-online one. However, please note that not every bank accepts clients who stay less than a year.

To create an account in a French bank, you must usually provide:

- Proof of identity : your passport or ID card for Europeans
- An enrolment certificate
- A proof of address

**emlyon** business school has several bank partners. They can be subject to change so you must always check the [IAEL platform](#) section "tuition fees". You can also check other all online banks such as Monabanq, n26, Revolut, Orangebank and Monese.

### Loans

You may obtain a bank loan through **emlyon** financial partners only if you have a French fiscal resident guarantor for your loan. If not, we advise you to obtain a loan in your country of origin before your arrival or via Prodigy Finance if your program is eligible.

[Prodigy Finance](#) is an innovative platform that offers loans at preferential rates to international postgraduate students attending top universities. All **emlyon** MSc students are eligible.

## The Financial Aid Guide (In French)

You will find in this guide all the financial aids that emlyon offers.

You can download it on your [Makersboard](#).



# Health and Insurance

## The Health Insurance System

For a stay of **more than 90 days** on the French territory it is mandatory to register to the CPAM through the dedicated [website](#). All international students are entitled to this coverage and **registration is completely free**. Social security coverage is provided by the CPAM (Caisse Primaire d'Assurance Maladie) and partially covers your healthcare expenses. **Attention!** Registration and coverage **take time** (at least several weeks). We recommend that you get an International insurance for the first 90 days at least.

If you have an **illness or such before coming to France** and you need medical follow-up, we strongly recommend that you **come with an international insurance** covering you from the 1st day of your arrival.

If you are from **the European Union, the EEE or Switzerland**, you must obtain a **European Health Insurance Card (EHIC)** before your arrival in France.

If your **stay is less than 90 days**, then you must have **international insurance coverage** for your time in France.

## Complementary health insurance

Complementary insurance plan called "mutuelle" is an additional health insurance that you can subscribe to in order to receive a better reimbursement of your medical expenses. This is not free and will require annual or monthly payment.

**HEYME** is an **emlyon's** partner and we have a 10% discount code for you: **EMLYON-10**



## Declaring a general doctor

You can register with a general doctor to the CPAM directly on your Ameli account. Thus doctor will get to know the patient's medical history and manage your records.

## The "carte Vitale"

Once your registration to the CPAM is done, you will be attributed a unique 13-digit identifier and then you will be able to order your "carte Vitale". This free card includes your health insurance number and provide access to health care and direct reimbursement.

## Emergency numbers

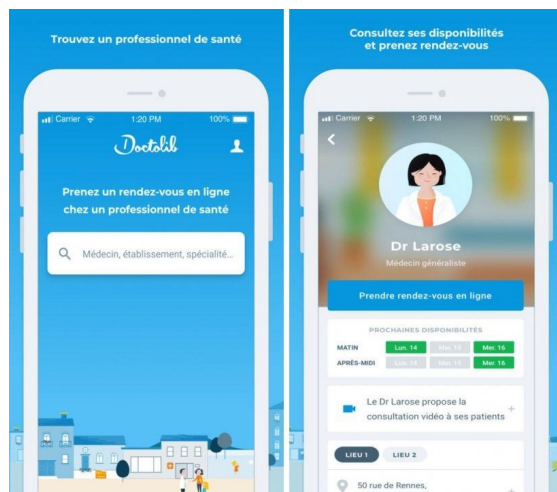
Numbers for more specialized services are available on [Makersboard](#) in the section « Health and Insurance ».



## Doctolib

**Doctolib** is an online platform and mobile app that allows you to book an appointment online directly with the doctor of your choice. You can find general practitioner, specialists and doctors who speak languages other than French.

In order to search for doctors speaking a particular language, you must first write the name of the city in French. It is better to precise if you want to see a specialist because if you leave it blank, you'll get the list of general practitioners by default. Filter your search by clicking on "langues parlées" (spoken languages) and choose your language in the drop-down menu. This will update the list of doctors and show you the next available appointments.



## Third party liability Insurance

This is a **mandatory insurance** that covers you in the event of damage or accidents that you may cause to third parties (people or property) in your academic or private life. This guaranty can be included in some insurance contracts : house insurance, bank contract, car insurance, etc.

If you do not have such an insurance, covering you in France, note that **emlyon** offers you the possibility to contract one during your IAEL registration with our partner Mutuelle Saint-Christophe.

## International Insurance

**emlyon** business school provides international insurance coverage for all of its students. The international mobility insurance applies for academic purposes only. You can benefit from a wide range of guarantees valid almost worldwide during the whole academic year. Your contract does not apply to countries in a current state of foreign or civil war or countries registered on the list of countries not recommended by the Ministry of Foreign Affairs.

Please note that **incoming exchange students are not covered by this insurance**.

The guarantees are detailed in documents available on [Makersboard](#) in the section « Health and Insurance » :

- Hospitalisation
- Medical expenses (medical examination, medicine, etc)
- Repatriation
- Third Party Liability Abroad
- Loss of luggage

In case of a health problem or an emergency, you must follow the advice on the assistance card in order to benefit from the reimbursement of your medical expenses.



# The Health & Wellbeing center

The Health & Wellbeing center by APICIL was established to provide the school's students with free, confidential, preventive healthcare, promote healthy lifestyles and provide healthcare (through medical consultations).



## A psychological support and guidance unit

**Psychologist – Merryl Martinez** – from Mondays to Fridays

<https://calendly.com/martinez-merryl> // [psychologue@em-lyon.com](mailto:psychologue@em-lyon.com)

04 72 18 46 26



Two toll-free phone numbers are available:

A confidential hotline for psychological support

Open 24 hours a day, seven days a week – French and English: **01 84 78 27 07**

**The Nightline** is an anonymous, confidential, night-time hotline on which students in need of a listening ear can talk to volunteer listeners who are also students.

Every Thursday to Monday from 9:00 PM to 02:30 AM

**04 85 30 00 10** // Chat: [nightline-lyon.fr](https://t.me/nightline-lyon)

## A medico-social team

**Doctor – Thierry Bussi re** – Thursdays, 09:00 AM – 12:30 AM

[infirmierie@em-lyon.com](mailto:infirmierie@em-lyon.com)

## A disability, diversity and inclusion department

**Advisor – Maxence Rogue** – Mondays to Thursdays,

<https://calendly.com/rogue-maxence> // [handicap@em-lyon.com](mailto:handicap@em-lyon.com)

04 72 18 46 37



## Workshops and talks

**Activities Coordinator – Jocelyne Massard** – Mondays to Thursdays,

[polesante@em-lyon.com](mailto:polesante@em-lyon.com)

04 72 18 29 88

## Measures to fight discrimination and Sexual and Gender-Based Violence (SGBV)

The School introduced measures to fight discrimination and Sexual and Gender-Based Violence (SGBV). This entailed creating a reporting protocol and an online reporting platform:

[speakup.emlyon.com](https://speakup.emlyon.com).

## For any emergency situation

Contact the **SAMU** by dialing **15**

**Suicide information line: 3114** (for people in difficulty or accompanying persons / family / supervisory teams... to obtain advice on what to do)



# Campus administration

## Administration Registration (IAEL)

You will have to register to **emlyon** by completing an online file on the [IAEL platform](#). This is a **very important step** as you need to complete this registration in order to receive your enrolment certificate (« certificat de scolarité »). You will need this document for many other procedures with the French administration.

Make sure to click on the « **validate your file** » button at the bottom right of the screen in order to complete your file!

## Student Card

The team will order your card **once your IAEL file is complete**. You will not receive your card if your file is incomplete. The **emlyon** business school student card is an ISIC student card that is recognized in over 100 countries and offers a range of advantages and services. For more information, please check the ISIC website

### This card can be charged:

#### • For catering:

- > By credit card using the catering machines, physically available on campuses.
- > By cash with the cashier.
- > [Online](#)

#### • For printing:

- > [Online](#)

#### • For CROUS restaurants:

- > Via the website or the app [IZLY](#)

## WIFI

There is a free WIFI network for **emlyon** students. Choose the **EMLEDOC** network and connect with your **emlyon** credentials (that you will receive before your arrival). Any IT issues? [Contact My Support](#).

# Campus services

## Creativity & Learning Hub

The Learning Hub is a new-generation third-place library and a "phygital" (physical and digital) space available on all school campuses.

The **physical Learning Hub** (*located on Level 2*) is a place for meetings, exchanges and collaboration. It has been designed to provide spaces for work, relaxation and eating, whether alone or with others, enabling everyone to find a place that meets their own needs in a spirit of mutual respect.

The **digital Learning Hub** creates and develops a constantly evolving digital information environment. Available 365/24/7 worldwide, it promotes learning, research and innovation within the school.

More information on the learning Hub on your student [Makersboard](#).

## Makers' Lab

**emlyon** business school makers' labs are prototyping workshops that are unique among French business schools. Dedicated to creativity and learning by doing, they are open to the entire **emlyon** ecosystem, whether graduates, students, staff, professors, researchers, incubators or partner companies. You can use your makers' lab (*located on Level 3*) to prototype your ideas in record time thanks to the resources provided, including machines, materials, electronic components, software and a team of facilitators.

More information on the Makers' Lab on your student [Makersboard](#).

## Food & Restauration

**The cafeteria** : Located on the ground floor in the "Espace 48.2", the cafeteria provides breakfast and a variety of snacks that you can buy with your credit card, by cash or with your **emlyon** student card.

**Le bon Bocal "Frigo connecté" Smart-Fridge** : Located on the ground floor in the "Espace 48.2", you can have access all day to fresh meals in this fridge. 5 different recipes per week will be available. 90% of the containers are made of glass, collected after use for cleaning and re-using.

You will find more information about food & restauration on your Student [Makersboard](#).

## Makersboard

The Makersboard online platform will provide you with valuable information to help you finalize your enrolment at **emlyon** business school. Makersboard will be your number one guide until you arrive on campus!

# On campus security

 **Security phone number:** +33 4 78 33 77 75


Contact: **Facility Management** (Security – Front desk – cleaning and technical operations): +33 4 78 33 77 75

Paris Diderot: [security-par-did@em-lyon.com](mailto:security-par-did@em-lyon.com)

Paris Legraverend: [security-par-leg@em-lyon.com](mailto:security-par-leg@em-lyon.com)

Contact | SODEXO site manager: **Dimitri ROBIN** or Félix BAZIN (deputy manager)

| [Sodexo-emlyon.fr@sodexo.com](mailto:Sodexo-emlyon.fr@sodexo.com)

 A defibrillator is available on the ground floor at the front desk on the Bercy side.

## Fire response instructions

**As soon as the building alarm bell is sounded, you must get out and get away from the building**

Here is a video to acquire the right fire response practices.

[Video](#)

## Theft safety instructions

This video is meant to raise awareness and show you what needs to be done when faced with individuals demonstrating unusual behaviors in keeping with vandalism, incivility, or theft attempts on campus. [Video](#)

**Never leave your stuff unattended, even on campus!**

**Lost & Found / Go to the front desk at the entrance**

## Instructions for helping a person in danger

**Reflex 1: Call security +33 4 78 33 77 75**

**Or send someone to the security Command Post if you need to stay by the victim**

Security will contact emergency services and will guide them through campus

Here is a short video to get the right reflexes!

[Video](#)

## Attack safety instructions

For further information about how to proceed daily and what to do as the threat of intrusion is evolving, here is an "Attacks/Intrusions" guidebook. This guidebook is meant to inform you and raise your awareness on what to do in case of an armed attack.

You are also provided with a short training via this [PDF](#) and this 9-question video: [Here](#)

# Your main contacts

## Student Services Center

### Welcome Desk

- [welcomedesk@em-lyon.com](mailto:welcomedesk@em-lyon.com)

### International Student Support

Immigration, housing, health and insurance, and life in France

- Paris campus: [internationaloffice75@em-lyon.com](mailto:internationaloffice75@em-lyon.com)

### Student Support team

Administrative registration, student card, diplomas

- Paris campus: [iael75@em-lyon.com](mailto:iael75@em-lyon.com)

Certificates, transcripts

[certificateonline@em-lyon.com](mailto:certificateonline@em-lyon.com)

### Financial Support

Mobility Grants (Erasmus +, OFAJ, EIFFEL):

- [scholarships@em-lyon.com](mailto:scholarships@em-lyon.com)

Need-based grants (CROUS, Emergency funds, foundation **emlyon..**):

- [scholarships@em-lyon.com](mailto:scholarships@em-lyon.com)

## Academic Exchanges

Incoming academic exchanges

[incoming.globalbba@em-lyon.com](mailto:incoming.globalbba@em-lyon.com)

Outgoing academic exchanges

[outgoing.globalbba@em-lyon.com](mailto:outgoing.globalbba@em-lyon.com)

Shanghai Mobility

Rona GUO [guo@em-lyon.com](mailto:guo@em-lyon.com)

## The IT Helpdesk

<https://mysupport.em-lyon.com/>

## The health and well-being center

Nurse: [infirmierie@em-lyon.com](mailto:infirmierie@em-lyon.com)

Psychologist: [psychologue@em-lyon.com](mailto:psychologue@em-lyon.com)

