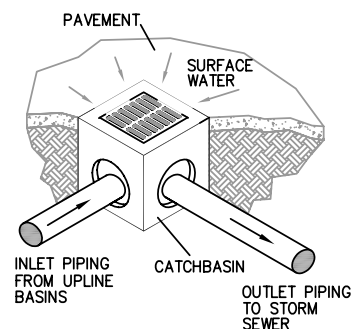
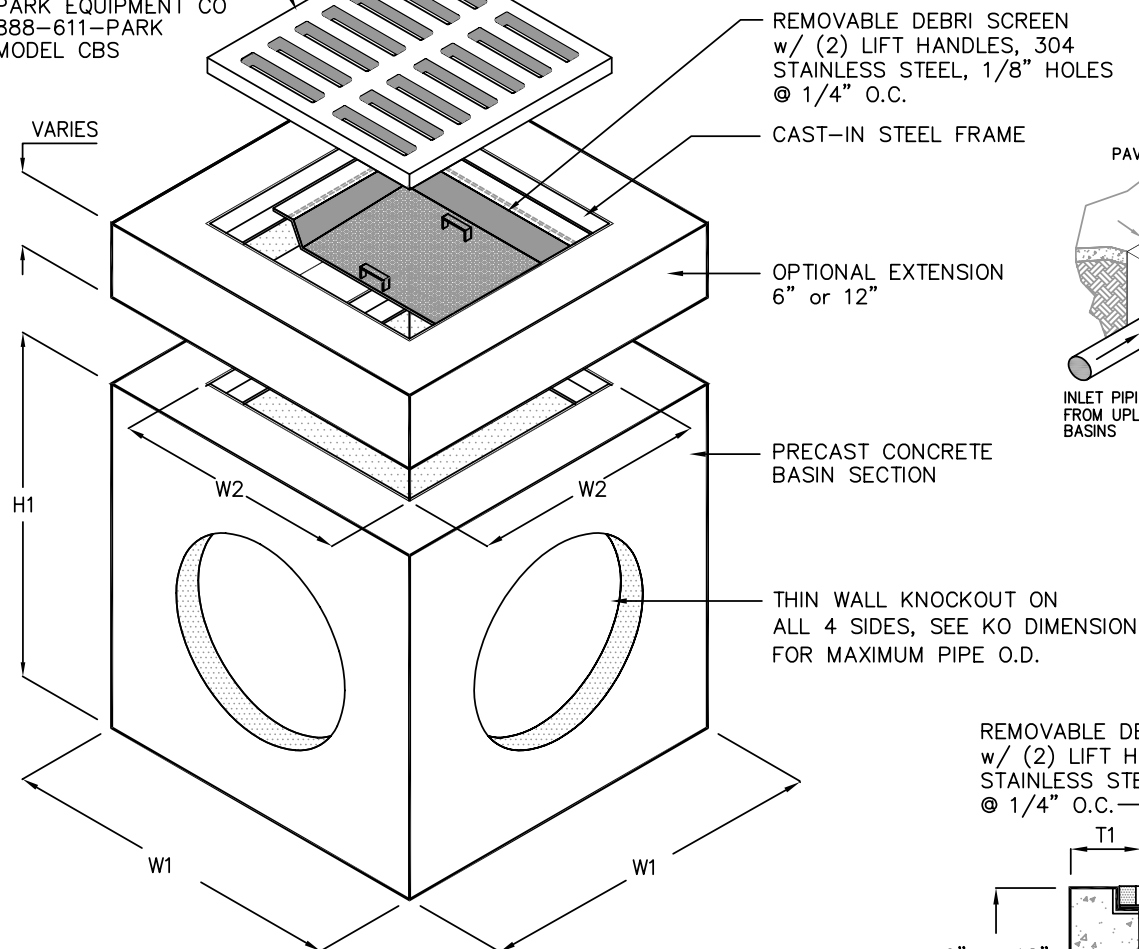
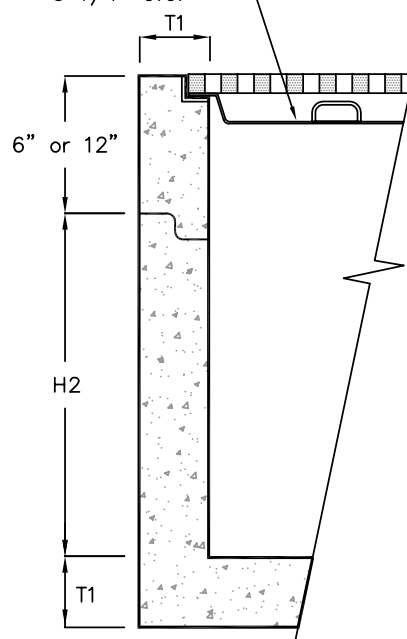


CATCHBASIN
TRAFFIC DUTY
CAST IRON GRATE
PARK EQUIPMENT CO
888-611-PARK
MODEL CBS



REMOVABLE DEBRI SCREEN
w/ (2) LIFT HANDLES, 304
STAINLESS STEEL, 1/8" HOLES
@ 1/4" O.C.



PARTIAL SECTION

© Park 2002

MODEL #	DIMENSIONS								
CATCH BASIN	W1	W2	H1	H2	T1	KO	GRATE SIZE	OPEN AREA (sq in)	WEIGHT LBS
CBS12 ¹	15"	10"	21"	18"	2"	10"	12"x12"x1"	90	180
CBS14	20"	12"	28"	24"	4"	12"	14"x14"x1½"	120	600
CBS18	24"	16"	34"	30"	4"	15"	18"x18"x1½"	168	1,000
CBS20	26"	18"	34"	30"	4"	17"	20"x20"x1½"	170	1,335
CBS24	32"	22"	41"	36"	5"	22"	24"x24"x2"	268	2,245
CBS27	37"	25"	42"	36"	6"	24"	27"x27"x2"	350	2,875
CBS30	42"	30"	42"	36"	6"	30"	32"x32"x2"	490	3,675
CBS36	48"	36"	42"	36"	6"	32"	38"x38"x2"	693	4,585

1. CB12 CATCHBASIN IS RATED FOR PEDESTRIAN LOADING. ALL OTHERS ARE TRAFFIC DUTY.
2. ALL JUNCTION BOXES ARE STANDARD PEDESTRIAN DUTY OR OPTIONAL TRAFFIC DUTY.



SPECIFICATIONS

CONCRETE :	Class 1 concrete with of design strength of 4500 PSI at 28 days. Unit is of monolithic construction at floor and first stage of wall with sectional riser to required depth.
REINFORCEMENT:	Grade 60 reinforced. Steel rebar conforming to ASTM A615 on required centers or equal.
C.I. CASTINGS:	Cast iron frames and grates are manufactured of grey cast iron conforming to ASTM A48-76 Class 30.



888-611-PARK
www.park-USA.com

"Expect the Best"

CATCHBASIN WITH DEBRI SCREEN MODEL CBS

SCALE	NONE	DWG. NO.	REV.
DATE	01/02	CBS-1	A