

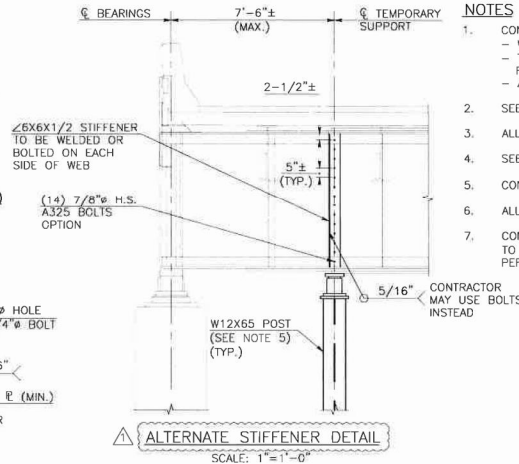
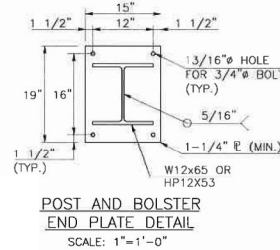
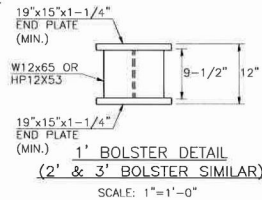
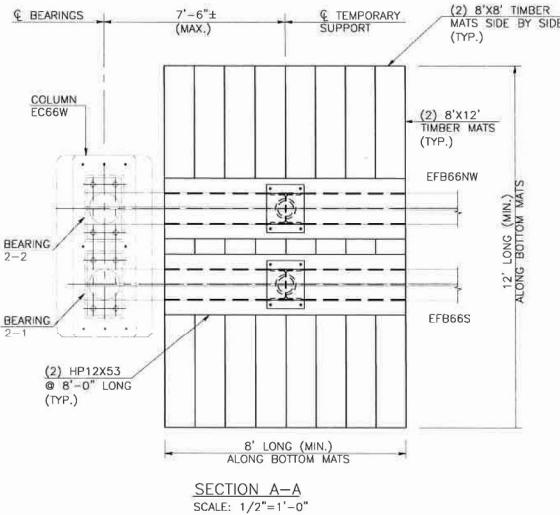
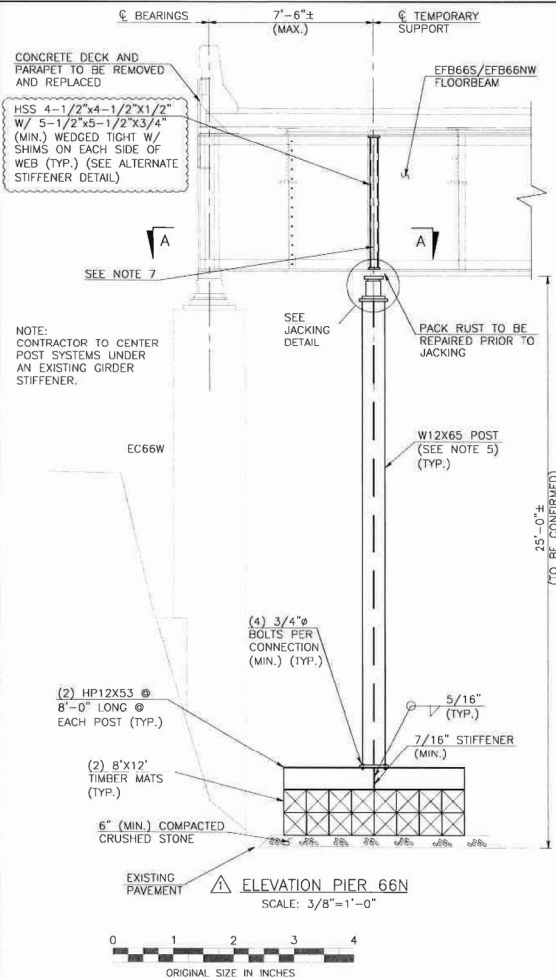
CHECKED BY

DRAFTED BY

ESTIMATED BY

CHECKED BY

DESIGNED BY



## JACKING SEQUENCE

1. CONFIRM VERTICAL CLEARANCE FOR JACKING SYSTEM. PREPARE FOUNDATION AREA AND ASSEMBLE JACKING POSTS, LOCKNUT JACKS, LOAD PLATES, AND SHIM PLATES UNDER CENTERLINE OF FLOORBEAMS. TEMPORARILY STABILIZE POSTS UNTIL JACKING COMMENCES.
2. WELD KEEPER ANGLES TO THE TOP SHIM PLATES AND ADJACENT TO LOCKNUT JACK. JACKING POST TO BE PLUMB.
3. EXTEND JACK CYLINDERS TO CREATE TIGHT FIT.
4. ONCE THE JACKING SYSTEM IS INSTALLED AND SECURED, JACKING OF THE FLOORBEAMS MAY PROCEED.
5. PRESSURIZE JACKS TO 10% OF DL VALUE SHOWN IN JACKING TABLE TO ASSURE THERE ARE NO DEFICIENT COMPONENTS IN THE SYSTEM. JACKING FORCE AND SYSTEM MOVEMENT SHALL BE MONITORED CLOSELY DURING THE JACKING OPERATION. JACKING CAN THEN PROCEED IN 25% INCREMENTS VERIFYING THERE IS NO MOVEMENT IN THE SYSTEM.
6. JACKING SHOULD CONTINUE UNTIL THE DL VALUE IS ACHIEVED OR ONCE THE LOAD HAS BEEN RELEASED FROM THE BEARINGS. AT NO TIME SHOULD THE VERTICAL MOVEMENT OF THE FLOORBEAMS EXCEED 1/8". IF THE FLOORBEAMS ARE NOT RAISED AT 110% OF THE DL, CONTRACTOR SHALL CONTACT THE ENGINEER.
7. ONCE THE FLOORBEAM REACTION IS REMOVED FROM THE BEARINGS, THE LOCKING COLLAR ON THE JACKS SHALL BE HAND TIGHTENED TO SECURE THE LOAD. AT THIS TIME, THE HYDRAULIC PRESSURE IN THE JACKS CAN BE RELEASED WHILE MONITORING THE FLOORBEAM/JACK HEADS TO ASSURE THAT THE FLOORBEAMS DO NOT SETTLE.
8. RECONSTRUCT CONCRETE PEDESTALS AND REPLACE BEARINGS AS PER CONTRACT PLANS.
9. REMOVE POSTS AS PER "POST REMOVAL PROCEDURE".

## POST REMOVAL PROCEDURE

1. AFTER ALL BEARING REPAIR WORK HAS BEEN COMPLETED, ATTACH PUMPS TO HYDRAULIC JACKS.
2. PRESSURIZE THE JACKS TO APPROXIMATELY 100% OF THE DL AND RETRACT THE LOCKING COLLARS.
3. GRADUALLY RELEASE PRESSURE IN THE JACKS WHILE MONITORING THE FLOORBEAM POSITIONS.
4. REMOVE POST SYSTEM.

## NOTES

1. CONTRACTOR HAS THE OPTION TO USE:
  - W12X65 OR HP12X53 BOLSTERS @ 1', 2' OR 3' LONG
  - THE POST HEIGHT, WITH BOLSTERS, CANNOT EXCEED 25' TOTAL (MAX.). ENSURE PROPER FIT-UP BETWEEN BOLSTERS AND THE OVERALL COLUMN REMAINS PLUMB.
  - ALL BOLSTER SECTION SIZES SHOWN ARE A MINIMUM.
2. SEE SHEET 1 FOR JACKING TABLES, GENERAL NOTES AND FRAMING PLAN.
3. ALL LOOSE MATERIAL TO BE TACK WELDED OR CLAMPED TOGETHER.
4. SEE JACKING LOAD TABLE FOR MINIMUM CAPACITY REQUIRED.
5. CONTRACTOR HAS OPTION TO USE W14X90 POST WITH 16"x16"x1-1/4" BASE PLATES.
6. ALL BOLT CONNECTIONS TO HAVE (4) 3/4" BOLTS (MIN.)
7. CONTRACTOR TO CENTER POST SYSTEMS UNDER AN EXISTING GIRDER STIFFENER. CONTRACTOR TO USE (2) 8'x8" (MIN.) MIXED OAK SELECT STRUCTURAL TIMBER BLOCKING WEDGED TIGHT PER SIDE OF WEB AT JACKING LOCATIONS.

