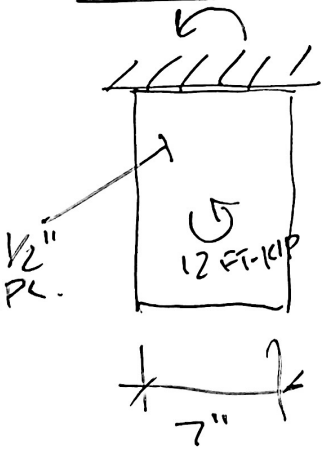


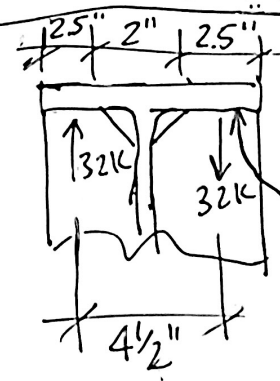
STIFFENER :



$$M_D = 0.9 \times \frac{1}{2} \times 7^2 \times \frac{1}{4} \times 50 \text{ KSI} = 23 \text{ FT-K} > 12 \text{ FT-KIP}$$

OKAY

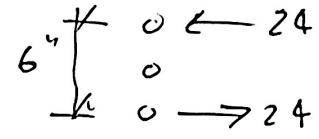
YIELD.



$$P = \frac{12 \text{ FT-K}}{4.5"} = \pm 32 \text{ K}$$

SIZE FOR 32 KIP

BOLTS:



$$\text{HORIZONTAL SHEAR} = \frac{12 \text{ FT-K}}{0.5 \text{ FT}} = \pm 24 \text{ KIP}$$

$$\text{VERT SHEAR} = \frac{12 \text{ FT-K}}{10 \text{ FT}} = \pm 1.2 \text{ K}$$

$$V = \sqrt{24^2 + 1.2^2} = \text{RESULTANT BOLT SHEAR}$$