

# PONY CLUB



---

## SHOW JUMPING RULES 2019

**£3.50**



# CONTENTS

	<b>Page</b>
Objectives	5
The Pony Club Show Jumping Committee	6
 <b>RULE</b>	
<b>1.</b> Age	7
<b>2.</b> Horses and Vaccinations	7
<b>3.</b> Dress	9
<b>4.</b> Saddlery and Equipment	13
<b>5.</b> Eligibility – General	17
<b>6.</b> Action After A Fall	17
<b>7.</b> Head Injury and Concussion	17
<b>8.</b> Suspension from Competitions for Medical Reasons	20
<b>9.</b> Unseemly Behaviour	20
<b>10.</b> Performance-Enhancing Drugs	21
<b>11.</b> Disqualification	21
<b>12.</b> Sponsorship	21
<b>13.</b> Insurance	21
<b>14.</b> Health and Safety	22
<b>15.</b> Legal Liability	22
<b>16.</b> Supplies for Organisers Available from The Pony Club Office	22
<b>17.</b> Guidelines for Branch Team and Individual Competitions (not Area or Championships)	22
<b>18.</b> The Course	23
<b>19.</b> Plan / Inspection / Access	24
<b>20.</b> Practice Fences	24
<b>21.</b> Exercise	24
 <b>RULES FOR JUDGES</b>	
<b>22.</b> Faults for Pony Club Show Jumping Competitions	25
<b>23.</b> Time Faults	25
<b>24.</b> Timing	25
<b>25.</b> Time Penalties	25
<b>26.</b> Falls	26
<b>27.</b> Disturbing The Obstacle As The Result of a Disobedience and or Fall or Disturbing an Obstacle Not As A Result of it Being Jumped	26
<b>28.</b> Adjustment of Saddlery, Dress and Outside Assistance	28

## **NOTES FOR JUDGES AND COURSE DESIGNERS**

Mini Competitions	29
Show Jumping Area Course Dimensions	30
Championship Course Dimensions	31

## **AREA AND CHAMPIONSHIP COMPETITIONS**

(To be used in conjunction with all General Rules)

Some of these Rules can also be used for Branch Competitions

<b>29.</b> Eligibility for Area and Championship Competitions	32
<b>30.</b> The Team Competition Comprises	36
<b>31.</b> Branch Entries	37
<b>32.</b> Substitutions	38
<b>33.</b> Course Designers / Timing / Judges / Ring	39
<b>34.</b> Order of Jumping	40
<b>35.</b> Course Dimensions	41
<b>36.</b> Method of Judging – Team Competition	43
<b>37.</b> Method of Judging – Individual Competition	44
<b>38.</b> Numbers to Qualify	45
<b>39.</b> Awards – Area Competitions	46
<b>40.</b> Jury of Appeal	47
<b>41.</b> Protests or Objections	47
<b>42.</b> Branch Representatives	47
<b>43.</b> Official Steward	48
<b>44.</b> Medical and Veterinary	48
<b>45.</b> Ring Stewards	49
<b>46.</b> Turnout Competitions	49
<b>47.</b> Explanation of Horsemanship Award Judging (Open and Intermediate)	50

<b>GUIDELINES FOR TURNOUT JUDGES</b>	51
--------------------------------------	----

<b>BRITISH SHOWJUMPING</b> – Table of Definitions	52
---	----

<b>BRITISH SHOWJUMPING COMPETITIONS</b> – Information Table	53
---	----

<b>HEIGHT CONVERSION TABLE</b>	53
--------------------------------	----

<b>HEAD INJURY AND CONCUSSION FLOWCHART</b>	54
---	----

# THE PONY CLUB SHOW JUMPING OBJECTIVES

To provide an opportunity for all Branch and Centre Members interested in Show Jumping to compete against each other and to encourage a high standard of riding.

Every eventuality cannot be provided for in these Rules. In any unforeseen or exceptional circumstances or any other issue in connection with Pony Club Show Jumping it is the duty of the relevant appointed officials to make a decision in a sporting spirit and to approach as nearly as possible the intention of these Rules. It is the competitors' responsibility to ensure that they are complying with the Rules of the competition.

When a rule states District Commissioner, Centre Proprietor also applies, and where Branch is stated, Centre applies.

Further information is available on the Show Jumping pages of The Pony Club website.

*As a Member of The Pony Club, I stand for the best  
in sportsmanship as well as in horsemanship.  
I shall compete for the enjoyment of the game well  
played and take winning or losing in my stride, remembering  
that without good manners and good temper,  
sport loses its cause for being. I shall at all times  
treat my horse with due consideration.*

# THE PONY CLUB SHOW JUMPING COMMITTEE

All Rules are made by the Pony Club Volunteer Committees including consultation with others.

The Pony Club Office provides administrative support and any queries or questions relating to these rules must be directed to the Chairman of the relevant sport and copied to the Secretary.

Chairman: James Loffet – Tel: 07771 696565 / sjchairman@pcuk.org

Members: Mike Benfield

Judy Edwards

Kirsty Hardstaff

Rachel Horton-Barr

Amanda Kent

Liz Lowry

Nicola Morrison (Area Representative)

Louly Thornycroft (Area Representative)

## **The Pony Club**

Stoneleigh Park, Kenilworth, Warwickshire CV8 2RW

Telephone: 02476 698300

pcuk.org

**NOTE: Rules which differ from those of 2018  
appear in red (as this note).**

© 2019 The Pony Club

All rights reserved. No part of this publication may be reproduced, stored in a retrieval system, or transmitted, in any form or by means, electronic, mechanical, photocopying, recording or otherwise without the prior permission of The Pony Club.

# THE PONY CLUB SHOW JUMPING RULES

## GENERAL

Except where varied in this Rule Book, all Pony Club Show Jumping Competitions shall be judged under British Show Jumping Rules, copies of which may be obtained from British Show Jumping, Meriden Business Park, Copse Drive, Meriden, West Midlands, CV5 9RG (02476 698800). Where the same matter is covered by both British Show Jumping and Pony Club Rules, then The Pony Club rule shall take precedence. For the particular purposes of scoring and results, The Pony Club variations to British Show Jumping rules are listed under Rules 22 to 28.

## 1. AGE

Unless specified otherwise in the schedule all Members are eligible to compete in any Pony Club Team or Individual Show Jumping competitions. See rule 29 for Eligibility to compete at Area Competitions and The Championships.

## 2. HORSES

- a) No horse under 5 years of age is eligible.
- b) There is no height limit.
- c) Stallions can only be ridden by Members if they have obtained written permission from their District Commissioner and in the interests of safety, must wear identifying discs on their bridle.

## VACCINATIONS

This rule applies to all competitions at Area Level and above:

N.B. Events that are held at other venues may be subject to additional specific rules. e.g. Any horse/pony entering a Licensed Racecourse Property MUST comply with the Vaccination requirements as set by the British Horseracing Authority. Similar restrictions apply in the cases of certain polo venues. In addition, if you are intending to compete under FEI Rules you will need to ensure you are compliant with those Rules.

- a) Passports  
A valid passport and vaccination record:
  - must accompany the horse/pony to all events
  - must be available for inspection by the event officials
  - must be produced on request at any other time during the event.

- b) Subject to paragraph (f) below, no horse/pony may take part in an event (which includes entering competition stables) unless it has a Record of Vaccination against equine influenza which complies with the Minimum Vaccination Requirements.
- c) The Minimum Vaccination Requirements for a horse/pony are:
- i. if the current vaccination programme started BEFORE 1 January 2014 that it has received:
    - a Primary Vaccination followed by a Secondary Vaccination given not less than 21 days and not more than 92 days after the Primary Vaccination; and
    - if sufficient time has elapsed, a booster vaccination given not less than 150 days and not more than 215 days after the Secondary Vaccination and further booster vaccinations at intervals of not more than a year apart

PROVIDED THAT if all annual boosters given AFTER 31 December 2013 have been given correctly, any error with the first booster vaccination or an annual booster given BEFORE 1 January 2014 may be ignored

- ii. if the current vaccination programme started AFTER 31 December 2013 that it has received:
    - a Primary Vaccination followed by a Secondary Vaccination given not less than 21 days and not more than 92 days after the Primary Injection; and
    - if sufficient time has elapsed, a booster vaccination given not less than 150 days and not more than 215 days after the Secondary Vaccination and further booster vaccinations at intervals of not more than a year apart.
- d) The Record of Vaccination in the pony's passport must be completed by a veterinary surgeon, signed and stamped line by line.
- e) No horse/pony whose latest booster vaccination is more than 14 days overdue may take part in a competition under any circumstances.
- f) Notwithstanding the above in cases where the Event Veterinary Officer, following consultation with The Pony Club Steward, is satisfied that the presence of the horse/pony at the event does not pose a threat to bio-security at the event, that horse/pony may nonetheless take part in the event on such conditions as the Event



Veterinary Officer considers appropriate, but the circumstances must be noted on the certificate. Any horse/pony allowed to compete under this discretion must be re-vaccinated to comply with the Minimum Vaccination Requirements and the certificate duly completed before it is eligible to compete again.






- g) No pony may compete on the same day as any relevant vaccination is given or on any of the 6 days following such a vaccination.

### 3. DRESS

New equipment is not expected, but what is worn must be clean, neat, tidy and safe. It is the competitor's responsibility to ensure their dress complies with the Rules. Contravention may incur disqualification. Apart from Cross Country colours and silks, brightly coloured accessories must not be worn.

- a) **Hats:** It is mandatory for all Members to wear a protective helmet at all times when mounted with a chinstrap fastened and adjusted so as to prevent movement of the hat in the event of a fall. This rule defines the quality of manufacture that is required. The individual sports also have additional requirements with regard to colour and type. It is strongly recommended that second hand hats are not purchased.

The hat standards accepted as of 1st January 2019 are detailed in the table below:

Hat Standard	Safety Mark	Allowed at the following activities:
PAS 015:1998 or 2011* with BSI Kitemark		All activities
VG1 with BSI Kitemark		All activities
Snell E2001* onwards with the official Snell label and number		All activities
ASTM-F1163 2004a onwards with the SEI mark		All activities
AS/NZS 3838 , 2003 or 2006/		All activities

- For cross-country riding (over 80cm) including Eventing, Tetrathlon, Horse Trials, Pony Racing (whether it be tests, rallies, competition or training) and Mounted Games competitions, a jockey skull cap must be worn with no fixed peak, peak type extensions or noticeable protuberances above the eyes or to the front, and should have an even round or elliptical shape with a smooth or slightly abrasive surface, having no peak or peak type extensions. Noticeable protuberances above the eyes or to the front not greater than 5mm, smooth and rounded in nature are permitted. A removable hat cover with a light flexible peak may be used if required.
- It is strongly recommended that a jockey skull cap is worn for cross-country riding over lower fences (less than 80cm) as there is research evidence that a fall onto the fixed peak can result in an over extension of the neck backwards with the potential for serious injury.
- No recording device is permitted (e.g. hat cameras) as they may have a negative effect on the performance of the hat in the event of a fall.
- The fit of the hat and the adjustment of the harness are as crucial as the quality. Members are advised to try several makes to find the best fit. The hat should not move on the head when the head is tipped forward. Most helmet manufacturers recommend you visit a qualified BETA (British Equestrian Trade Association) fitter.
- Hats must be replaced after a severe impact as subsequent protection will be significantly reduced. Hats deteriorate with age and should be replaced after three to five years depending upon the amount of use.
- Hats, must be worn at all times (including at prize giving) when mounted with a chinstrap fastened and adjusted so as to prevent movement of the hat in the event of a fall.
- For Show Jumping and Mounted Games the cover, if applicable, shall be dark blue, black or brown only.
- For Dressage, hats and hat covers must be predominately black, navy blue or a conservative dark colour that matches the rider's jacket for Area competitions or above. The Pony Club Hat silk is also acceptable.
- The Official Steward / Organiser may, at his discretion, eliminate a competitor riding in the area of the competition without a hat or with the chinstrap unfastened or with a hat that does not comply with these standards.

## Hat Checks and Tagging

The Pony Club and its Branches and Linked Centres will appoint Officials, who are familiar with The Pony Club hat rule, to carry out hat checks and tag each hat that complies with the requirements set out in the hat rule with an aquamarine Pony Club hat tag. Hats fitted with an aquamarine Pony Club, British Eventing (BE) or British Riding Club (BRC) hat tag will not need to be checked on subsequent occasions. However, The Pony Club reserves the right to randomly spot check any hat regardless of whether it is already tagged.

Pony Club (aquamarine) hat tags are only available to purchase from [shop.pcuk.org](http://shop.pcuk.org).

Tagging indicates that a hat meets the accepted standards, NO check of the fit and condition of the hat is implied. It is considered to be the responsibility of the Member's parent(s) / guardian(s) to ensure that their hat complies with the required standards and is tagged before they go to any Pony Club event. Also, they are responsible for ensuring that the manufacturer's guidelines with regard to fit and replacement are followed.

### c) **BODY PROTECTORS**

The Pony Club does not make the use of body protectors compulsory, except for all Cross Country riding and Pony Racing whether it be training or competing. If a Body Protector is worn for any Pony Club activity it must meet BETA 2009 Level 3 standard (purple label) or BETA 2018 Level 3 standard (blue and black label).



For general use, the responsibility for choosing body protectors and the decision as to their use must rest with Members and their parents. It is recommended that a rider's body protector should not be more than 2% of their body weight. When worn, body protectors must fit correctly, be comfortable and must not restrict movement. BETA recommend body protectors are replaced at least every three to five years, after which the impact absorption properties of the foam may have started to decline.

BETA 2009 Level3 (purple label) body protectors will continue to be accepted at Pony Club competitions until 1<sup>st</sup> December 2024.

Riders who choose to use the Woof Wear Body Cage EXO must lodge a key with the Event Organiser when they collect their number.

## Air Jackets

When an air jacket inflates the sudden noise startles horses in the immediate vicinity thereby causing difficulties for the other members of a ride if used in a group ride in a confined area, e.g. an indoor school or outdoor manège. Air jackets are therefore not encouraged for group rides.

If a rider chooses to wear an air jacket in Cross Country or Pony Racing, it must only be used in addition to a normal body protector which meets the BETA 2009 Level 3 standard (purple label) or BETA 2018 Level 3 standard (blue and black label). Parents and Members must be aware that riders may be permitted to continue after a fall in both competition and training rides for Cross Country and/or Pony Racing, provided the rider has been passed as fit to continue by First Aid Providers. In the event of a fall, it must be fully deflated or removed before continuing, after which, the conventional body protector will continue to give protection. Air jackets must not be worn under a jacket and number bibs should be fitted loosely or with elasticised fastenings over the air jacket.

- e) **Jackets** – traditional jackets must be worn with a Pony Club tie or hunting stock. It is permitted to wear a Pony Club stock with any jacket. Jackets must be worn for the duration of the test. Jackets may be removed during warming up, provided the competitor is wearing a shirt that at a minimum covers the shoulders. Competitor numbers should be worn at all times.
- f) **Pony Club Badge:** The official metal membership badge should be worn on the left lapel of the rider's jacket.
- g) **Jodhpurs/Breeches:** Dark-coloured breeches may not be worn.
- h) **Footwear:** Only standard riding or jodhpur boots with a well defined square cut heel may be worn. Plain black or brown half chaps may be worn with jodhpur boots of the same colour. Tassels and fringes are not allowed. No other footwear will be permitted, including wellington boots, yard boots, country boots, "muckers" or trainers.  
Boots with interlocking treads are not permitted, nor are the boots or treads individually. Stirrups should be of the correct size to suit the riders boots (see the Stirrup rule).
- i) **Spurs:** May be worn at Rallies and other events. Any misuse of spurs will be reported to the DC/Centre Proprietor, Area Representative and Training Chairman, any reported riders will be recorded and monitored. Sharp spurs are not permitted. Only blunt spurs, without rowels or sharp edges, and spurs that have a smooth

rotating ball on the shank may be worn. If the spurs are curved, the curve must be downwards and the shank must point straight to the back and not exceed **4cm** in length. The measurement is taken from the boot to the end of the shank.

- j) **Whips:** No rider may carry, use or permit to be used a whip greater than 75cm. or less than 45cm in length overall. Riders may not hit their horse/ pony before the start of the course and may be eliminated for doing so at the Judge's discretion.
- k) **Jewellery:** Only medical jewellery is permitted. No other jewellery is allowed for safety reasons, other than a wrist watch, a wedding ring, a stock pin worn horizontally or a tie clip. Members who are contemplating piercing their ears or any other part of their body should be aware that they will not be allowed to compete until such time as the "sleepers" can safely be removed. The reason for this is that sleepers have in the past caused injuries following falls. This rule will be strictly enforced.
- l) **Electronic devices:** (i.e. headphones etc. enabling another person to communicate with the rider) are not allowed whilst the rider is competing. No recording device is permitted (e.g. head / bridle cameras etc.).
- m) **Riders' Legs:** Neither the feet nor the stirrup leathers or irons may be attached to the girth, nor the feet attached to the stirrup irons.
- n) While walking the course and when dismounted in the collecting ring, competitors must be tidily dressed but not necessarily in riding clothes.
- o) **Prize giving:** Mounted or dismounted, competitors must be correctly dressed in their competition riding clothes. Only tack that falls within the rules of the competition will be allowed.

#### **4. SADDLERY AND EQUIPMENT**

Whilst not compulsory The Pony Club prefers competitors to use plain saddlery. Any extra detail will be marked down in a tack and turnout competition. New equipment is not expected, but what is worn must be clean, neat and tidy.

It is the competitors' responsibility to ensure that their tack is in accordance with the rules and that they present themselves for inspection.

Any competitor who presents to compete in the wrong saddlery/ equipment will not be allowed to compete until they decide to re-present in the correct saddlery/equipment.

Any competitor who then changes their tack after the Tack Inspection will be disqualified from the competition. The Official Steward has absolute discretion to forbid the use of any bit, gadget, spur or boot which he considers cruel or misused.

Any misuse of a bit/bridle will be reported to the DC/Centre Proprietor, Area Representative and Training Chairman. Any reported riders will be recorded and monitored.

Any equipment not covered in these Rules must be referred at least two weeks in advance of the competition to The Pony Club Office to allow time for the Chairman of the Show Jumping Committee to be consulted. All tack must be correctly fitted. Disabled riders are welcome to apply to The Pony Club Office to use special equipment.

- a) **Saddles:** Type optional.
- b) **Numnahs / Saddle Cloths: Any solid colour** is permitted. Contrasting piping is permitted. Branch logos are allowed when competing for the Branch; logos must not exceed 20 sq. cm. This does not preclude the wearing of clothing for horses or riders that has been presented by sponsors of the Championships in the current or previous years.
- c) **Stirrups:** Should be of the correct size to suit the rider's boots. They must have 7mm ( $\frac{1}{4}$ " ) clearance on either side of the boot. To find this measurement, tack checkers should move the foot across to one side of the stirrup, with the widest part of the foot on the tread. From the side of the foot to the edge of the stirrup should be 14mm.

Note: There are now many types of stirrups marketed as 'safety stirrups'. All riders must ensure that their stirrups are suitable for their type of footwear, the activities in which they take part and that the stirrup leathers are also in good condition.

There are no prescribed weight limits on metal stirrups, however with the advent of stirrups of other materials, weight limits are seen to be given by manufacturers. Any person buying these stirrups, should, take particular notice if weight limits are on the box or attached information leaflets.

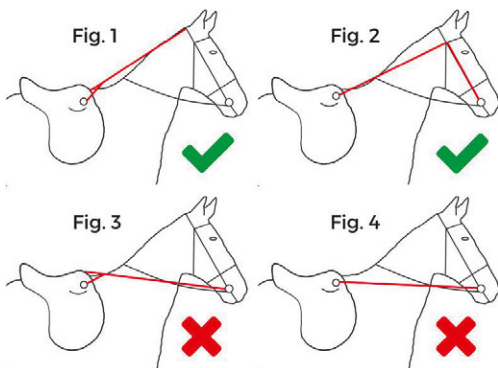
Neither the feet or the stirrup leathers or irons, may be attached to the girth, nor the feet attached to the stirrup irons.

- d) **Bridles:** For safety reasons leather bridles are recommended. The Micklem Multibridle and bitless bridles are permitted.
- e) **Reins:** Market Harboroughs and running, draw or check reins of any kind are forbidden. (A running, draw or check rein is one which is attached to the saddle, girth, martingale or breast plate on the horse).

### Grass Reins:

Grass reins are permitted at Pony Club rallies and competitions jumping up to 50cm or Walk and Trot Tests.

- Only those grass reins shown in diagrams 1 and 2 are permitted
- Grass reins must be fitted to allow and not restrict the normal head position of the pony. The rein length must be sufficient to allow the pony to stretch over a small fence.
- Grass reins may be leather or synthetic material, if synthetic then a break point of leather or other suitable material must be included



- f) **Martingales:** The only martingales permitted are Irish, Standing, Running or Bib only one of which may be worn at the same time. Standing Martingales may be attached only to the cavesson portion of the noseband fitted above the bit.
- g) **Nosebands:** Only one may be worn unless using a Standing Martingale with a combination, kinton, drop noseband or similar in which case the addition of a cavesson is allowed. Nosebands must be correctly fitted and should not cause discomfort. Nosebands must not incorporate chain or rope except that Myler combination bits and other similar bit designs that incorporate a rope nosepiece are permitted. Sheepskin nosebands are permitted.

- h) **Fly hoods, nose nets and ear covers:** are permitted for all competitions, and may also provide noise reduction. The ear cover/ fly fringe must not cover the horse's eyes.

Ear plugs are not permitted and spot checks may be carried out.

Nose nets are permitted. Nose nets must cover the nose only, leaving the mouth and bit visible.

- i) **Blinkers:** Are prohibited except leather and sheepskin attachments on the cheek pieces of the bridle are allowed providing the material does not exceed 3cm in diameter measured from the horses face.
- j) **Bits:** All synthetic bits must be black, brown or white. Pelhams must be used with two reins or roundings. Weymouth bits must only be used as part of a double bridle.
- k) **Bit guards:** Only entirely rubber and smooth on both sides are permitted.

**The following are NOT allowed/permitted:**

- The use of string, twine or cord in or round the horse's mouth is forbidden.
- Ernest Dillon reins, Split reins and Bridge reins.
- Tongue Straps and Tongue Grids.
- Weighted Boots.
- Humane Girths (having non-independent straps that will loosen if one of the straps were to break)
- Hoof Boots

Any unusual decoration of the horse with unnatural things, such as ribbons, flowers, glitter etc. in the mane/tail or applied to the coat is forbidden. Red bows in the tail are permitted for horses that kick.

Saddlery and equipment used during the Tack and Turnout Competition must be the same as that worn throughout the competition, except by permission of the Official Steward/Organiser.

The Official Steward has absolute discretion to forbid the use of any bit, gadget or spur which he considers cruel.

Competitors using Saddlery and Gadgets which are not allowed in the competition will be eliminated.



## 5. ELIGIBILITY – General

No Member may ride more than 3 horses or ponies in the same class/competition. This rule applies equally to second round and final competitions for which horses and/or riders have qualified from a previous competition. **Different rules apply at Summer Area Competitions (See Rule 29)**

## 6. ACTION AFTER A FALL

Any competitor who has a fall or sustains a serious injury anywhere at the competition site should see the medical personnel on the day and be passed fit to ride before riding that horse in a further test or before riding any other horse.

## 7. HEAD INJURY AND CONCUSSION

### i. General Advice

Head injuries and concussion are life threatening and potentially life changing incidents. Serious head injuries are usually obvious, but concussion can be very subtle and not always immediately apparent.

Head injuries result from a mechanical insult to the head, and can cause traumatic brain injury, possibly leading to permanent disability or death.

Concussion is a disturbance in brain function caused by a direct or indirect blow to the head. Some people describe concussion as mild traumatic brain injury. Concussion should be seen as part of a spectrum of brain injury with traumatic brain injury at one extreme and no injury at the other. Typically concussion cannot be seen on standard brain scans, which makes it difficult to diagnose objectively. Repeated injury to the head can worsen an already pre-existing concussion, even if the time between injuries is counted in days or weeks.

The Pony Club wants to ensure members / riders attending Pony Club activities enjoy themselves and get the most out of riding. At the same time, they must also balance that enjoyment with members' / riders' safety. This may mean on occasion that members / riders are asked not to ride by officials who believe they may have sustained a concussion either at the time of injury or from a previous injury (which may not have been sustained whilst riding). Parents / guardians, members, officials and other riders must respect this decision. It is a decision sometimes made without having objective evidence, but it is made in good faith and in the pursuance of avoiding further harm.

ii. **Incidents that could cause head injuries or concussion**

Any member / rider who, at a Pony Club activity, suffers an incident that could cause head injury or concussion (for example, a fall from their horse / pony) should be assessed. Who does this assessment will depend on the first aid cover that is in place for that activity. Depending on the level of first aid cover then the exact process of diagnosing whether the member has suffered no head injury / concussion, a suspected head injury / concussion or a confirmed head injury / concussion will be slightly different. The process for diagnosing each option is talked through in more detail below.

From the assessment being carried out it may be immediately obvious that there is no cause for concern. In the course of Pony Club activities, The Pony Club is well aware that there are different kinds of falls and that assuming every fall leads to a head injury would be counterproductive to the aims of the organisation. We ask that reasonable care is taken to ensure members / riders have not sustained a serious head injury or concussion.

iii. **Unconsciousness**

If a member / rider is unconscious following an incident they should be treated as if they are suffering with a confirmed concussion and the steps in points vii) below should be followed.

iv. **Who can diagnose head injury or concussion?**

Diagnosis of a head injury or concussion (both confirmed and suspected) can be carried out by any level of first aid cover officiating at a Pony Club activity. These could be a trained or qualified first aider (including a coach), a paramedic or a doctor. If there is any doubt as to the diagnosis the member / rider should see the highest level of first aid cover that is present and they should make the diagnosis. If the first aid cover at the activity cannot reach a definite diagnosis then they should refer the member / rider to a hospital or a doctor off site for them to make a diagnosis.

It would be more usual for a trained or qualified first aider to say they suspect a head injury or concussion than to diagnose it themselves. If they are the highest level of first aid cover available at the activity that will mean the member / rider has to go off site to have the diagnosis made by a doctor.

The member / rider should not ride again until they have been seen by a doctor. This may mean that the rider will miss any part of an activity or competition.

v. **Actions to be taken in the event of a suspected head injury or suspected concussion diagnosis**

If a diagnosis of a suspected concussion or head injury is made by a first aider, they should advise the parents / guardians to take the member / rider to hospital.

Any member / rider who has been diagnosed with a suspected or confirmed head injury or concussion should not be left alone and must be returned to the care of their parents / guardians where appropriate.

Once a diagnosis of suspected head injury or concussion is made by the highest level of official first aid cover present at the activity, then that decision is final. No one may overrule that decision on the day if it is made in good faith. If a member / rider is advised to see a doctor because of suspected head injury or concussion and the parents / guardians decide not to allow the member to be examined (either at the activity or in hospital), the member will not be allowed to ride again on the day and will be treated as if they have sustained a confirmed head injury / concussion. Depending on the circumstances, the decision not to allow further examination may be considered a safeguarding issue.

Where a member / rider is diagnosed with a suspected concussion by a first aider or paramedic and that member / rider subsequently sees a doctor who is sure that they do not have a concussion and did not suffer a concussion and **will** provide evidence that they are satisfied that the member / rider is well, that member / rider will be treated as if they did not sustain a concussion.

vi. **Actions to be taken in the event of a confirmed head injury or confirmed concussion**

In the event of a diagnosis of a confirmed head injury or confirmed concussion, the doctor will advise the member not to ride or take part in any activity that potentially involves hard contact for three weeks. They will advise the member that they could, after 10 days, ask a doctor, who is experienced in assessing concussion (including in children where appropriate), whether they have any concerns about any ongoing concussion problems. If that doctor is happy to certify that the member is not suffering with a concussion, the member may ride again, providing evidence regarding that

decision is provided. If no evidence that such an assessment has been made, the member should not take part in any Pony Club riding activity and/or any unmounted activity that may involve any hard contact for at least three weeks after the initial injury.

- vii. **Actions to be taken in the event of a diagnosis of a confirmed or suspected head injuries/ concussions outside of Pony Club activities** The Pony Club has no official way of automatically knowing about members who sustain a confirmed or suspected head injury / concussion outside of Pony Club activities. A concussion may be sustained outside Pony Club activities, for example at riding activities organised by other BEF member bodies or at school football / rugby / hockey matches. It is for parents / guardians ultimately to make a decision about the welfare of their child.

However, if a Pony Club official in charge of any Pony Club activity becomes aware that a member has sustained a suspected or confirmed head injury / concussion and has been advised not to take part in any potentially hard contact activities for three weeks, they should not allow the member to take part in any mounted activities and/or any unmounted activities that could potentially involve hard contact for three weeks, unless the member or their parents / guardians can produce appropriate medical evidence of fitness to ride dated at least 10 days after the initial injury,

(See PAGE 54 for Head Injury and Concussion Flowchart)

## **8. SUSPENSION FROM COMPETING FOR MEDICAL REASONS**

If a rider is banned/suspended from competing in any sport for medical reasons, they should not compete at any Pony Club event until passed fit for the sport in which they are banned/suspended. It is the responsibility of the rider or parent/guardian to ensure that this rule is adhered to.

## **9. UNSEEMLY BEHAVIOUR**

Unseemly behaviour on the part of riders, team officials, or team supporters will be reported as soon as possible by the Official to The Pony Club Office. Offenders may be penalised by disqualification of the Branch or Branches concerned for a period up to three years.

Any competitor who in the opinion of the Official Steward, or Organiser, has been extremely rude or aggressive towards any officials at a competition, or who has behaved in an aggressive or unfair manner to their horse may be disqualified.

## 10. PERFORMANCE-ENHANCING DRUGS

- a) **Equine:** Controlled Medication: It is clearly essential for the welfare of the horse that it is given appropriate veterinary treatment if and when required and that this should include appropriate medication. Medication however may mask an underlying health problem and horses should not compete when taking medication where such medication may have a detrimental effect on the horse's welfare.
  
- b) **Human:** Performance-enhancing drugs are forbidden.

All competitors should be aware that random samples may be taken for testing from both themselves and/or their horse. The protocol used will be that of the relevant sport. See Pony Club drugs policy in Health and Safety Rule Book 2019.

## 11. DISQUALIFICATION

The Official Steward or Chief Judge may disqualify a competitor at any stage of the competition for:

- Dangerous riding.
- If, in their option, the horse is lame, sick or exhausted.
- Misuse of whip, spur or bit, or ill-treatment of the horse.
- Breach of the rules.
- Unseemly behaviour, including bad language.

## 12. SPONSORSHIP

In the case of competitors and horses, no form of advertising, and this includes a sponsor's name, may appear on the competitor's or horse's clothing and equipment at any Pony Club competition. This does not preclude the wearing of clothing for horses or riders that has been presented by sponsors of the Championships in the current or previous years. Sponsors at Area Competitions must not be business competitors of the main sponsors of the discipline, and must be approved by The Pony Club Office. Any advertising material that is used by sponsors, whether it be in the form of display banners or programme material, must be tasteful, and not inappropriate to the image of The Pony Club.

## 13. INSURANCE

The Pony Club Third Party Legal Liability Insurance Policy is extended to give cover for all the official Area Competitions and the Championships. Details of this insurance are given in the "Administrative Notes" in the current issue of The Pony Club Handbook. In the event of any accident, loss or damage occurring to a Third Party or to the property of a Third Party (including the general public and competitors) no liability should be admitted and full details should be sent at once to The Pony Club Office.

## **14. HEALTH AND SAFETY**

Organisers of this event have taken reasonable precautions to ensure the Health and Safety of everyone present. For these measures to be effective, everyone must take all reasonable precautions to avoid and prevent accidents occurring and must obey the instructions of the organisers and all the officials and stewards.

## **15. LEGAL LIABILITY**

Save for the death or personal injury caused by the negligence of the organisers, or anyone for whom they are in law responsible, neither the organisers of this event or The Pony Club nor any agent, employee or representative of these bodies, nor the landlord or his tenant, accepts any liability for any accident, loss, damage, injury or illness to horses, owners, riders, spectators, land, cars, their contents and accessories, or any other person or property whatsoever, whether caused by their negligence breach of contract or in any other way whatsoever. Entries are only accepted on this basis.

## **16. SUPPLIES FOR ORGANISERS AVAILABLE FROM THE PONY CLUB OFFICE**

We suggest that you order your supplies 21 days in advance.

- a) Rules of The Pony Club Show Jumping.
- b) White/NCR Score Pads (200 competitors per pad).
- c) A3 Team score book pads (180 teams per pad).
- d) Eventing SJ Phase score pads (200 competitors per book).

## **17. GUIDELINES FOR BRANCH TEAM AND INDIVIDUAL COMPETITIONS**

(Does not apply at Area or Championships)

These Competitions should follow the principles of The Pony Club Show Jumping Rules.

Every Pony Club Show Jumping competition of any level should nominate an Official Steward.

This can be either the Organiser of the competition or someone nominated by the Organising Branch.

The Official Steward has absolute discretion to forbid the use of any bit, gadget or spur which he considers cruel or misused. The Official Steward can eliminate any competitor.

It is recommended that a Steward should be appointed to check the tack of each horse but the competitor remains responsible for complying with the rules for Saddlery.

The size of the fences should be modified according to the age and ability of the competitors.

The first round should be relatively easy, but the fences should be raised for the second round.

## 18. THE COURSE

- a) **General:** It is recommended that a British Show Jumping Panel Course Designer is used if possible.

It is important to use some 'fill-in material' so that the fences look inviting. Hollow plastic poles are not allowed. All plastic covered poles must have a wooden core to ensure that they are the same weight as a painted timber pole.

- b) **The Course:** If possible the first two fences should be sited to be jumped towards the Collecting Ring.

One third to one half of the obstacles should be spreads and must include at least one square oxer.

- c) **Distances:** Unless the competition class stipulates the height of pony the distances should be as for horses.

In a course designed for a mixed class (horses and ponies) it is important not to use difficult committed distances so that ponies can adjust their strides.

There should be no three stride distances anywhere in the course. There must be no less than five strides on the approach or following any combination, (either double or treble).

Except where the rules for the competition stipulate and there is a significant mix of sizes of ponies/horses, one or two double combinations instead of a double and a treble may be better suited to the competition.

When the second or third element of a double or treble combination is a spread, the distances must be as for two non-jumping strides.

- d) **Safety Cups:** Safety Cups are now compulsory for all Pony Club Jumping Competitions. To be used on the back rails of spread fences and middle and back rails of triple bars. This will also include practice fences in the collecting ring. These cups must be in use at all times and must NOT be removed from the wing stands.

## 19. PLAN / INSPECTION / ACCESS

- a) **Plan:** A plan of the Course shall be displayed by the time the Course is ready for inspection showing:
  - i) The Course to be jumped and its length.
  - ii) The Time Allowed and the Time Limit.
- b) **Inspection:** The Course shall be ready for inspection by Competitors a reasonable time before the start of the Competition.
- c) **Access to the Ring:** Prior to the start of the Competition, no competitor may enter or practise in the ring mounted.

## 20. PRACTICE FENCES

- a) Competitors must use only the practice fences provided in the exercise area.
- b) The practice fences must be marked appropriately and must be jumped with red on the right and white on the left.
- c) Practice fences may not be more than 10cm above the height, or exceed the spread, of the current round.
- d) Practice fences shall be monitored, and shall not be used when the Steward is absent. See particularly British Show Jumping Rule regarding Practice Fences.
- e) Safety Cups must be used on the back rails of spread fences. These cups must be in use at all times and must NOT be removed from the wing stands.

## 21. EXERCISE

- a) Competitors must exercise their horse/pony in the area provided. Horses may not be exercised in the Car Park or Horsebox area or among spectators.
- b) On the day of the Competition, horse/pony may only be ridden by the rider who is riding the horse/pony in the competition.
- c) Lungeing of a horse is only permitted in areas designated by the organiser who may also prohibit it completely at their discretion. If allowed, lungeing may be carried out by either the rider or other persons. Lungeing of a horse and rider is prohibited.
- d) Whilst exercising, warming up or competing, it is ONLY permissible to use the saddlery allowed under the rules.



# RULES FOR JUDGES

## 22. FAULTS FOR PONY CLUB SHOW JUMPING COMPETITIONS

Knockdown	4 faults
Foot on lath, tape and/or strip or in water	4 faults
First disobedience	4 faults
Second disobedience	8 faults
Third disobedience	Elimination
Error of Course	Elimination
First Fall of Rider	8 faults
Second fall of Rider	Elimination
(First Fall of Rider [at Area & Championships only])	Elimination
Fall of horse	Elimination

## 23. TIME FAULTS

One Time fault is incurred for each commenced second in excess of the time allowed. Failure to complete the Course within the Time Limit incurs Elimination. (NB Time Limit = twice time allowed).

## 24. TIMING

If possible, electronic timing should be used. If this is not available, two timekeepers with stop watches must be used. If the timing equipment permits, the 45-second countdown may be used according to British Show Jumping Rules. It should however be explained over the public address before starting and at intervals during the first round.

## 25. TIME PENALTIES

Time penalties are incurred when an obstacle is displaced as the result of a disobedience on the following scale.

- Starting the clock following a stop will be taken from take off or attempted take off and 6 seconds added.
- At a single obstacle, at the first obstacle of an open or closed combination or at subsequent obstacles of a closed combination 6 seconds.
- At the second obstacle of an open combination 6 seconds.
- At the third or subsequent obstacle of an open combination 6 seconds.

Time penalties are added to the time taken to complete the round before the calculation of time faults.

## **26. FALLS**

- a) At all Summer and Winter Area competitions and Championships the first fall of a rider will result in Elimination. Riders must also see Rule 6.
- b) A horse is considered to have fallen when the shoulder and quarters on the same side touch the ground or touch the obstacle and the ground simultaneously.
- c) A rider is considered to have fallen when there is separation between him and his horse which necessitates remounting or vaulting into the saddle.
- d) The first fall of rider during each round anywhere on the course, including a fall prior to starting and during interrupted time, incurs 8 faults in competitions judged under Table A. The second such fall incurs elimination in any competition.
- e) Following a fall, continuing the course from a position which is nearer to the next obstacle or to the finishing line than the point at which the fall occurred incurs elimination.
- f) A disobedience and a first fall at the same obstacle incur the faults or elimination appropriate to the disobedience plus 8 faults for the fall.
- g) If as the result of a first fall on landing over an obstacle a or subsequent obstacles, the horse fails to attempt the next obstacle of the combination, the competitor is penalised 8 faults for the fall and is not penalised for a disobedience. The procedures for ringing the bell and stopping the clock must be applied.
- h) A rider may be given a 'leg up' after a fall without being eliminated.
- i) After an elimination which has resulted from a fall of horse or rider, the rider must leave the arena dismounted.

## **27. DISTURBING THE OBSTACLE AS A RESULT OF A DISOBEDIENCE AND/OR FALL OR DISTURBING AN OBSTACLE NOT AS A RESULT OF IT BEING JUMPED**

- a) A disobedience and/or fall which disturbs the obstacle, including the displacement of a lower element, such that the obstacle must be re-erected and/or checked incurs a 6 second time penalty in addition to the faults and/or elimination incurred.

- b) The bell is rung and the clock is stopped immediately, except in the case of a first fall when the bell is rung immediately, but the clock is not stopped until the rider has remounted.
- c) If following a fall the obstacle has been re-erected and checked and the bell has been rung the second time before the rider has remounted, the clock is left running throughout and no time penalty is incurred.
- d) Penalties at Combinations – If there is a disobedience and/or fall at obstacle B or subsequent obstacles of a combination without disturbance of that obstacle and any of the previous obstacles have been disturbed and require re-erection or checking, the procedures for ringing the bell and stopping the clock in (b) must be applied.
- e) The clock is restarted at the moment when the horse takes off or attempts to take off at the obstacle where the refusal occurred.

If a disobedience occurs at the second or subsequent part of a combination the clock is restarted when the horse takes off or attempts to take off at the first element of the combination.

- f) Penalties for knockdowns are only incurred in respect of obstacles which are knocked down as a direct result of having been jumped in the correct order and provided the obstacle has started to fall before the competitor crossed the finishing line. Any other knockdown is not penalised.

**EXAMPLE:** A rider/horse knocks into and displaces a fence not being jumped, which has either already been jumped, is still to be jumped or is not part of the course. If the fence is still to be jumped or is impeding the safe jumping of another fence the Judge will ring the bell to stop the rider, and the clock, at an appropriate place to allow the fence to be rebuilt without penalty. After the restart bell the clock will restart when the rider/horse passes the place where they were stopped.

Before leaving the arena after being eliminated as a result of a third refusal or run out, the competitor may take up to two attempts to jump any single obstacle in the arena in the direction as indicated on the course plan. After a second fall or horse fall a rider must leave the arena dismounted.

## **28. ADJUSTMENT OF SADDLERY, DRESS AND OUTSIDE ASSISTANCE**

Jumping or attempting to jump any obstacle or passing through the finish without a hat, or with the chin strap incorrectly fastened incurs elimination unless the Judge decides that the competitor was so far committed to jumping the obstacle at the moment when the chin strap came undone that he could not be expected to pull up before attempting the obstacle.

In the case of adjustment to hat, chin strap, or saddlery becoming necessary during the round, for safety reasons outside assistance may be given. The clock will NOT be stopped and faults will be given as for a resistance (ceasing to go forward). If it becomes necessary for the rider to dismount, faults will be given as for a fall.

A rider may be given a 'leg up' after a fall without being eliminated.

## PONY CLUB BRANCH COURSE DIMENSIONS FOR MINI COMPETITIONS – GUIDELINES FOR JUDGES AND COURSE DESIGNERS

### Pony Club Branch Course Dimensions for Mini Competitions - Guidelines for Judges & Course Designers

	0.60m (1' 11")	0.65m (2' 1")	0.70m (2' 3")	0.75m (2' 5")	0.80m (2' 7")	0.85m (2' 9")
<b>Speed</b>	300 or 325mpm	300 or 325mpm	300 or 325mpm	300 or 325mpm	300 or 325mpm	300 or 325mpm
<b>Course Length</b>	approx 450m	approx 450m	approx 450m	approx 450m	approx 450m	approx 450m
<b>No. of Fences</b>	minimum of 9	minimum of 9	minimum of 9	minimum of 9	minimum of 9	minimum of 9
<b>Max Height</b>	0.60m	0.65m	0.70m	0.75m	0.80m	0.85m
<b>Max Spread</b>	No parallel or ascending over may be wider than it is high	No parallel or ascending over may be wider than it is high	No parallel or ascending over may be wider than it is high	No parallel or ascending over may be wider than it is high	No parallel or ascending over may be wider than it is high (Triple Bar - width should not exceed the height + 1/3)	No parallel or ascending over may be wider than it is high
<b>One or Two Double Combinations</b>	one or two doubles 0.60m (must be upright on 2nd part)	one or two doubles 0.65m (must be upright on 2nd part)	one or two doubles 0.70m (must be upright on 2nd part)	one or two doubles 0.75m (must be upright on 2nd part)	one or two doubles 0.80m (must be upright on 2nd part)	one or two doubles 0.85m (must be upright on 2nd part)
<b>Treble Combination</b>	X	X	X	X	X	X
<b>Water Tray</b>	Optional	Optional	Optional	Optional	Optional	Optional
<b>Water Jump</b>	X	X	X	X	X	X

**NOTES:**

All levels: There should be no three stride distances anywhere in the course

There must be no less than five strides on the approach or following any combination, (either double or treble combinations).

# PONY CLUB SHOW JUMPING AREA COURSE DIMENSIONS

## - NOTES FOR JUDGES AND COURSE DESIGNERS

These are also suitable for Branch Competitions

### Pony Club Show Jumping Area & Championship Course Dimensions - Notes for Judges & Course Designers

These are also suitable for Branch competitions

	Regional Champs	Novice	Intermediate	Open
Speed	325mpm	325mpm	325mpm	325mpm
Course Length	approx 450m	approx 450m	approx 450m	approx 450m
No. of Fences	minimum of 9	minimum of 9	minimum of 9	minimum of 9
Max Height	0.80m	0.90m	1.0m	1.10m (1 x upright & 1 x ascending spread) Remainder - 1.05m
Max Spread	No parallel or ascending oxer may be wider than it is high X	No parallel or ascending oxer may be wider than it is high X	No parallel or ascending oxer may be more than 5cm wider than it is high. (Triple Bar - width should not exceed the height + 1/3 )	No parallel or ascending oxer may be more than 10cm wider than it is high.
Combinations	X Single fences only	2 x doubles 0.95m (must be upright on 2nd part) Note: There must be no less than five strides on the approach or following any combination.	2 x doubles 0.95m (must be upright on 2nd part)	2 x doubles 1.05m (if second part spread must be two strides)
Water Tray	X	X	X	X
Water Jump	X	X	X	X
Max Height	0.80m 2 single fences may be 0.85m	0.95m	1.05m	1.15m
Max Spread	No parallel or ascending oxer may be wider than it is high X	No parallel or ascending oxer may be wider than it is high X	No parallel or ascending oxer may be more than 5cm wider than it is high. (Triple Bar - width should not exceed the height + 1/3 )	No parallel or ascending oxer may be more than 10cm wider than it is high.
Combinations	1 x double 0.80m (must be two uprights or over to upright on two strides)	2 x doubles 0.90m (must be upright on 2nd part) Note: There must be no less than five strides on the approach or following any combination.	2 x doubles 1.0m (must be upright on 2nd part)	1 x double & 1x treble 1.10m (if 2nd or 3rd part is a spread it must be two strides)
Water Tray	X	Optional	YES	YES
Water Jump	X	X	X	Optional - max 3.35m spread

All levels: There should be no three stride distances anywhere in the course

# PONY CLUB SHOW JUMPING CHAMPIONSHIP COURSE DIMENSIONS

## - NOTES FOR JUDGES AND COURSE DESIGNERS

These are also suitable for Branch Competitions

### Pony Club Show Jumping Area & Championship Course Dimensions - Notes for Judges & Course Designers

These are also suitable for Branch competitions

	Regional Champs	Novice	Intermediate	Open
Speed	325mpm	325mpm	325mpm	325mpm
Course Length	approx 4.50m	approx 4.50m	approx 4.50m	approx 4.50m
No. of Fences	minimum of 10	minimum of 10	minimum of 10	minimum of 10
Max Height	0.80m 2 single fences may be 85cm	0.95m	1.05m	1.15m
Max Spread	No parallel or ascending over may be wider than it is high X	0.95m X	No parallel or ascending over may be more than 5cm wider than it is high. (Triple Bar - width should not exceed the height + 1/3 )	No parallel or ascending over may be more than 10cm wider than it is high.
Combinations	1 x double 0.80m (must be two uprights or over to upright on two strides) Note: There must be no less than five strides on the approach or following any combination, (either double or treble).	2 x doubles 0.90m (must be upright on 2nd part)	2 x doubles 1.0m (must be upright on 2nd part)	1 x double & 1x treble 1.10m (if second or third part is a spread it must be two strides)
Water Tray	X	Optional	Optional	Optional
Water Jump	X	X	X	Optional - max 3.35m spread
Max Height	0.85m 2 single fences may be 90cm	1.0m	1.10m	1.20m
Max Spread	No parallel or ascending over may be wider than it is high X	1.0m	1.15m	1.30m
Combinations	1 or 2 x doubles 0.85m (must be two uprights or over to upright on two strides) Note: There must be no less than five strides on the approach or following any combination, (either double or treble).	2 x doubles 0.95m (must be upright on 2nd part)	2 x doubles (must be upright on 2nd part)	1 x double & 1x treble 1.10m (if second or third part is a spread it must be two strides)
Water Tray	Small tray is optional	YES	YES	YES
Water Jump	X	X	X	Optional - max 3.35m spread

All levels: There should be no three stride distances anywhere in the course

## **AREA AND CHAMPIONSHIP COMPETITIONS**

### **To be used in conjunction with all General Rules**

Some of these Rules can also be used for Branch /Centre Competitions

Each Pony Club Area shall organise a qualifying competition in the summer. Branches /Centres shall compete within their own Areas.

The competition comprises a Team competition and an Individual competition. The Individual competition is open to all competitors in the Team Competition, whose scores are automatically counted for this competition, and to additional individual competitors.

When a rule states District Commissioner, Centre Proprietor also applies, and where Branch is stated, Centre applies.

**Vaccinations are required for ALL Areas and Championships; please see Rule 2 for further information.**

### **29. ELIGIBILITY FOR AREA QUALIFYING COMPETITIONS AND THE CHAMPIONSHIPS**

The District Commissioner or Centre Proprietor is required to certify the eligibility of horse and rider as follows. Should a breach of eligibility subsequently be discovered, then the Show Jumping Committee may disqualify the offending competitor.

Area – Members must fulfill all the following eligibility rules on the day of their Area Competition.

Championships – Between the Area Competition and the Championships, combinations who qualify for the Championships are permitted to compete in BS (or SJI) competitions at a higher level than they are allowed to for the level at which they are qualified but not more than one level higher. Please see below.

#### **OPEN, INTERMEDIATE, NOVICE, REGIONAL CHAMPIONSHIPS and OPEN NOVICE**

1. Horses must be 5 years of age or over and there is no height limit.
2. Combination of Horse and Rider cannot compete at two different levels of the same Sport at the Area Competition or at the Championships.



3. Stallions may only be ridden by Members if written permission is obtained from their District Commissioner and they must wear identifying discs on their bridles in the interests of safety.
4. All horses and ponies must have genuinely participated at a minimum of 3 working rallies since 1<sup>st</sup> July in the previous year, one of which must have been in the current year, with a Member of The Pony Club. The District Commissioner or Centre Proprietor has discretion in the case of those who are working or in further education. Rallies must be advertised at least seven days prior to the date of the Rally, and organised by Branch Committees or Centre Proprietors. Attendance at camp counts as one working rally.
5. All riders entered must be active members of the stated Branch or Centre of The Pony Club who have participated at a minimum of three working rallies of this or their previous Branch or Centre since 1<sup>st</sup> July in the previous year, excluding team practices and coaching, and Rallies must be advertised at least seven days prior to the date of the Rally. Attendance at camp counts as one working rally. The District Commissioner or Centre Proprietor has discretion in the case of those who are working or in further education. Riders must have been Members of The Pony Club since at least the 28<sup>th</sup> February in the current year except for Members who are completely new to The Pony Club, who may join up until the 31<sup>st</sup> March and still be eligible for Area Competitions and the Championships.
6. Regional Championships – Riders must be fully paid up Members of The Pony Club, but with no restriction on time of joining.
7. In the case of a transfer of Branch/Centre since the previous year's competition, the Transfer Rule in the current Pony Club Handbook will be enforced. This does not apply to the Regional Championships and their qualifiers.

### **OPEN**

#### **Area Competitions: Combination of Horse and Rider are NOT eligible if they have:-**

- i. Achieved a double clear in BS or SJI competitions where any of the fences were above 1.30m in the first round.

Championships: as for Area Competitions except that the combination of Horse and Rider are permitted to have:-

- i. Achieved double clears in BS or SJI competitions where any of the fences were above 1.30m in the first round but not above 1.40m

*(Note – members must carefully check the rules for BS / SJI classes before competing so as not to inadvertently render themselves ineligible for Pony Club competitions. If in doubt always ask the BS Course Designer at the show what is the maximum height in the first round of the course before jumping it.)*

## **INTERMEDIATE**

**Area Competition: Combination of Horse and Rider are NOT eligible if they have:-**

- i. Completed an Open Area Show Jumping or above in previous years.
- ii. Achieved one double clear in BS or SJI competitions where any of the fences were above 1.10m in the first round. Except that double clears in a BS Senior Newcomers Preliminary or BS Junior Foxhunter Preliminary competition do not render the combination of horse and rider ineligible.

Championships: as for Area Competitions except that the combination of Horse and Rider are permitted to have:-

- i. Achieved double clears in BS or SJI competitions where any of the fences were above 1.10m in the first round but not above 1.20m. (For clarity: a double clear in a Senior Foxhunter preliminary round is not permitted).

*(Note – members must carefully check the rules for BS / SJI classes before competing so as not to inadvertently render themselves ineligible for Pony Club competition. If in doubt always ask the BS Course Designer at the show what is the maximum height in the first round of the course before jumping it.)*

## **NOVICE**

**Area Competitions:**

**Riders are NOT eligible if they have:-**

- i. Completed an Open Area Level or above competition in Show Jumping or Eventing in the current year or have done so in previous years.

**Combination of Horse and Rider are NOT eligible if they have:-**

- ii. Completed an Open Area level or above competition in Eventing or Show Jumping in the current year or have done so in previous years.
- iii. Achieved one double clear in BS or SJI competitions where any of the fences were above 1.00m in the first round.

**Championships: as for Area Competitions except that the combination of Horse and Rider are permitted to have:-**

- i. Achieved double clears in BS or SJI competitions where any of the fences were above 1.00m in the first round but not above 1.10m (For clarity: a double clear in a Senior Newcomers preliminary or Junior Foxhunter Preliminary is not permitted).

*(Note – members must carefully check the rules for BS / SJI classes before competing so as not to inadvertently render themselves ineligible for Pony Club competition. If in doubt always ask the BS Course Designer at the show what is the maximum height in the first round of the course before jumping it.)*

**OPEN NOVICE**

- i. Open to all Members **who are not eligible for the Novice.**
- ii. Open to any Horse.
- iii. Eligibility is subject to points 1 – 7 at the beginning of this Rule.

This class is open to Individuals only.

**REGIONAL CHAMPIONSHIPS**

**Area Competitions:**

**Riders are NOT eligible if they have:-**

- i. Previously represented their Branch or Centre at Novice level or above in any Show Jumping or Eventing Area Competitions.

**Combination of Horse and Rider are NOT eligible if they have:-**

- i. Recorded a double clear at 90cm or above in the first round at BS or SJI competitions
- ii. Received a money prize in any BS (or points in any SJI) competition which was 90cm or above in the first round.
- iii. Previously competed in their Dengie Winter League (90cm) Area or Dengie Open Area competition.

Championships: as for Area Competitions except that the combination of Horse and Rider are permitted to have:-

- i. Recorded double clears or received money prizes at 90cm or above in the first round at BS or SJI competitions but not above 1m.

*(Note – members must carefully check the rules for BS / SJI classes before competing so as not to inadvertently render themselves ineligible for Pony Club competitions. If in doubt always ask the BS Course Designer at the show what is the maximum height in the first round of the course before jumping it.)*

### **30. THE TEAM COMPETITION COMPRISES (BRANCH AND CENTRE TEAMS)**

Teams **must consist** of four or three Members from each Branch/Centre of The Pony Club in Great Britain and Northern Ireland (best three scores to count).

- a) **COMBINED TEAMS:** If a Branch has a Member/Members who are not included in a team, they may combine with another Branch in a similar situation to form a team to compete at the Area Competition. This team shall not be eligible to qualify for the **Intermediate, Novice or Regional Championships**, though the individual Members shall be. Combined Teams at the Area Competition must be declared before the start of the competition or they will not count towards the number to qualify.
- b) **COMBINED TEAMS FOR OPEN LEVEL ONLY**  
If a Branch/Centre has a Member/Members who are entered as individuals at the Area competition and not included in a Branch/Centre team, they may combine with other Branch/Centre Members to form a team at the Area Competition.

#### **The following rules will apply:**

- i. Open combined teams can only be put together by the Area Representative and/or Area Organiser via a draw before the Area Competition.
- ii. If an Open Combined team is in a qualifying position based on the current rules then they will be eligible to qualify for the Championships and the next placed Branch/Centre team will also qualify.

**All qualifying teams will be eligible for all prizes on offer at the Championships.**

### 31. ENTRIES

- a) **Area Competition:** Entries should be sent, together with the entry fee agreed by the Area Organiser, to the organising Branch. Details to be found in the Area Competition Schedule. A Start Fee may be charged if necessary. If a Branch wishes to withdraw, part of the entry fee will be refunded by the organising Branch provided notice is received by the Secretary 10 or more days before the competition.
- b) **The Championships:** Entries for competitors who have qualified for the Championships, should be made via the online Entry system no later than 7 days after their Area Competition or the following day if the Area Competition is held on or after **Thursday 1<sup>st</sup> August 2019**.

A Refund of the Entry Fee (less an admin fee of £3.00) will only be given on production of a Veterinary Certificate or Doctor's Note; this will be given up until **Monday, 12th August 2019**. After this date no refunds will be issued.

There will be NO start fee charged.

- i. Branches qualifying for the Championships but do not wish to go forward must inform the Organiser before prize giving so that the envelope containing the qualifying documents to be forwarded to The Pony Club Office can be given straightaway to the next highest-placed team which does wish to go.
- ii. Should qualified teams/individuals be unable to compete at the Championships the next competitor/team down may compete providing the substitution is made prior to 12noon: Novice, Intermediate and Open – The Pony Club Office **Monday, 12<sup>th</sup> August 2019**. If a qualified team has less than three members available to compete at the Championships due to withdrawals, the remaining individual/s from the team will be given a place in the Individual Championship Class.
- c) **Regional Championships:** refer to the relevant Championship venue schedule for entry details. Should qualified teams/individuals be unable to compete at the Championships the next competitor/team down may compete providing the substitution is made before the start of the competition or any earlier deadline set by the organisers. If a qualified team has less than three members available to compete at the Championships due

to withdrawals, the remaining individual/s from the team will be allowed to compete as individuals.

## 32. SUBSTITUTIONS

- a) **Area Competitions:** After the closing date for declarations no substitutions may be made of horses or riders except in cases of illness, lameness or other unavoidable circumstances which must be certified by the District Commissioner/Representative.

### **In such a case:**

- i. If a horse has to be substituted an alternative rider may be nominated.
  - ii. If a rider has to be substituted an alternative horse may be nominated.
  - iii. If a Branch enters two teams substitution may be made from one team to the other.
- b) **The Championships and Regional Championships:** No substitutions may be made of horses or riders except in cases of illness, lameness or other unavoidable circumstances which must be certified by the District Commissioner or his appointed Representative. In such a case:
- i. Teams:
    - Members and/or horses may be substituted, but at least 2 combinations of horse and rider must be the same as those that started in the qualifying team at the Area Competition.
    - If a horse has to be substituted an alternative rider may be nominated.
    - If a rider has to be substituted an alternative horse may be nominated.
    - If a team of three qualifies for the Championships, then a fourth team member may be entered at the Championships, as long as both the horse and rider are eligible.
    - Substitutions of rider for Open Combined teams are only permitted if the replacement rider competed at the Area Open qualifier and completed both rounds of jumping without elimination, retirement or disqualification.
  - ii. Individuals:
    - A substitute horse may be entered but not a substitute rider.

- c) **Area Competitions and the Championships:**
- i. No substitutions are allowed after the Competition has started under any circumstances.
  - ii. No horse or rider replaced by a substitute may re-enter the Competition.
  - iii. In all cases of substitution the District Commissioner or Appointed Representative must certify in writing that the substitute is eligible.
  - iv. It is the strict responsibility of the District Commissioner or his Appointed Representative to ensure that both the Competition Secretary AND the Judges are aware of any substitutions before the start of the class concerned.

### **33. COURSE DESIGNERS / TIMING / JUDGES / RING**

The course must be designed and built by a BS Panel Course Designer who must be present on the day of competition. For the Regional Championships qualifier the designer must be BS level one or above, for Novice, Intermediate and Open qualifiers he/she must be Level two or above. Any deviation from this must be approved by the Chairman of Show Jumping. It is preferable to have a dedicated Course designer for each ring but if the Designer agrees to officiate in more than one ring it is essential that another suitably experienced person is in charge of maintaining and repairing the course in each ring at all times.

Make sure the Course Designer is sent a copy of these Rules.

**IT IS IMPORTANT THAT ONLY JUMPS OF BS STANDARD ARE USED – and don't forget to order your water tray.**

- a) **TIMING**
- If possible, electronic timing should be used. If this is not available, two timekeepers with stop watches must be used, and there should be someone at the start and finish to signal when each competitor crosses the line. If the timing equipment permits, the 45-second count-down may be used according to British Show Jumping Rules. It should however be explained over the public address before starting and at intervals during the first round.
- b) **JUDGES**
- Regional Championships Qualifiers**
- The Organiser will appoint judges as follows:  
One BS Judge (Level 2 or above) per ring and at least one but preferably two suitably experienced assistants to support the judge

by writing or commentating or one BS Level 1 Judge and one BS Trainee Judge or above and an assistant. Any deviations from this must be approved by the Show Jumping Chairman.

### **Open, Intermediate, Novice (Area and Championships) and Regional Championship (Finals)**

The Organiser shall appoint a minimum of Two British Show Jumping Judges per ring, of whom one may be a BS level one Judge but at least one must be Level 2 or above. It is strongly recommended that a suitably experienced writer or commentator is also appointed.

In cases where sufficient BS Level Two Judges are not available, deviations from this minimum level will be considered but must be approved by the Show Jumping Chairman.

If a water jump is used with 1 or no poles, an additional British Show Jumping Judge will be needed to stand by the jump. All Judges shall be sent copies of these Rules.

- c) **THE RING:** It is recommended that the minimum size of an outdoor Arena is 74m x 55m (80yds x 60yds)

A full set of British Show Jumping Fences will probably have enough material to build a course according to the requirements of these rules. When the fences have arrived at the venue check that there is sufficient and adequate equipment.

Extra 'Dressing' (greenery, trees, flowers, etc.) should be provided so that the course-builder can build an attractive and inviting course.

- d) **THE COURSE:** The length of the course should not exceed 450m.

### **34. ORDER OF JUMPING:**

After entries have been received, the order of jumping shall be drawn, but, at the Organiser's discretion, due regard may be given to the convenience of Branches travelling great distances. This order shall be maintained throughout the Competition, except in the case of a Jump-off, when the order shall be redrawn. Competitors who are not ready to jump in their turn may be eliminated.

- a) **Area and Championship Team Competitions**
- i. First Round – the whole team to jump in succession.
  - ii. Second Round – the whole team will jump in succession, teams with the highest total faults (best three) will jump first.



Teams on total zero score will jump last. This is optional for Area Competitions and the Novice Championships. Should weather or ground conditions demand this may be changed on the day.

- b) Turnout Competitors should be judged in the same order as they compete in the first round.

### 35. COURSE DIMENSIONS

a) **General (Open, Intermediate and Novice)**

- i. It is important that only Jumps of British Show Jumping Standard/ equivalent are used. Safety Cups are compulsory (see Rules 18 and 20).
- ii. Speed – 325 metres per minute.
- iii. Length of Course – should not exceed 450m.
- iv. The First Round should be fairly easy to enable most teams to get round and to reduce eliminations to a minimum. The track should be altered for the second round which should be more difficult so as to ensure a result and avoid having too many teams in the 'jump-off'. It should include a fair proportion of fences of maximum height and spread.

When the second or third element of a double or treble combination is a spread, the distances must be as for two non-jumping strides.

b) **OPEN**

**Area:** First Round – 1.10m Second Round – 1.15m

There will be two double combinations in the first round and a double and a treble combination in the 2nd round

A Water Tray will be included in the second round A water jump may be included

No parallel or ascending oxer may be more than 10cm wider than it is high.

(Triple Bar – width should not exceed the height + 1/3)

**Championships:** First Round – 1.15m Second Round – some fences will be 1.20m

There will be one double and one treble combination

at 1.10m A Water Tray will be included in the second round

A water jump may be included

No parallel or ascending oxer may be more than 10cm wider than it is high.

(Triple Bar – width should not exceed the height + 1/3)

c) **INTERMEDIATE**

**Area:** First Round – 1.00m Second Round – 1.05m

There will be two double combinations (no treble combination).

The second part of all combinations must be uprights.

A Water Tray will be included in the second round.

No parallel or ascending oxer may be more than 5cm wider than it is high. (Triple Bar – width should not exceed the height + 1/3)

**Championships:** First Round – 1.05m Second Round – some fences will be 1.10m

There will be two double combinations (no treble combination).

The second part of all combinations must be uprights.

A Water Tray will be included in the second round.

No parallel or ascending oxer may be more than 5cm wider than it is high. (Triple Bar – width should not exceed the height + 1/3)

d) **NOVICE**

**Area:** First Round – 0.90m Second Round – 0.95m

There will be two double combinations (no treble combination).

The second part of all double combinations must be uprights.

A Water Tray may be included in the second round.

No parallel or ascending oxer may be wider than it is high.

**Championships:** First Round - 0.95m Second Round – 1.00m There will be two double combinations (no treble combination). The second part of all double combinations must be uprights.

A Water Tray will be included in the second round.

No parallel or ascending oxer may be wider than it is high.

e) **REGIONAL CHAMPIONSHIPS AND QUALIFIERS**

**Area:** First Round – 0.80m

Second Round – 0.80m with two single fences at 85cm.

There is to be a minimum of 10 fences and the course must not exceed 450m at a speed of 325mpm.

The first part of the course in the first round should be lower than the maximum height.

No oxer may be wider than it is high.

In the first round there is to be no double or treble combination, only single fences.

In the second round there is to be one double combination consisting of two uprights **or an oxer to upright** on two non-jumping strides no more than 80cm high.

For all Pony Club jumping related distances must be on at least four strides.

All distances should be suitable for horses. Water trays are not to be used.

### **Regional Championships:**

There is to be a minimum of 10 fences and the course must not exceed 450m at a speed of 325mpm.

First Round – 80cm – 2 single fences may be 85cm

In the first round there is to be one double combination consisting of two uprights or an oxer to upright on two non-jumping strides no more than 80cm high

Second Round – 85cm – 2 single fences may be 90cm.

In the second round there is to be one or two double combinations consisting of two uprights or an oxer to upright on two non-jumping strides no more than 85cm high.

No oxer may be wider than it is high. All distances should be suitable for horses.

Water trays may be used in the 2nd round under an upright but must not be more than 60cm front to back and must be placed centrally underneath the poles, with no more than 30cm extending out in front of the jump.

## **36. METHOD OF JUDGING – TEAM COMPETITION**

Only in exceptional circumstances and with the express permission of the Chairman of Show Jumping will a change of format/competition be considered at Area Competitions.

### **Open, Intermediate, Novice and Regional Championships**

- a) This is a two-round competition.

The Total of the best three scores to count in each round. That total is carried forward to the second round. The highest score is discarded in each round and may or may not be the scores of the same competitor.

- b) If a Team is eliminated in the first round any member not eliminated will be allowed to jump in the second round. If a team member is eliminated in the first round he/she may jump again in the second round, provided the Team has not been eliminated, and is eligible to count.
- c) **Open, Intermediate and Novice** : In the event of equality for first place at the Championships or qualifying places at Area Competitions, there shall be one jump-off against the clock and

there will be a draw for the order of jumping. All Members of the team must jump-off. The first member of each team in the jump-off will jump first followed by the second and so on. The whole team jumps irrespective of previous faults or eliminations and the best three in each team count. If their jumping faults are equal, their aggregate times decide. Regional Championships Area Competitions may also be run in this way OR:

For Regional Championships only: at Area level and at the discretion of the organisers the second round may be run as a single phase. Each competitor's score for the second round will be the total of their faults from both phases of the second round. In the event of equality for first place or qualifying places the time taken in the second phase of the second round will be used to decide the results and there will not be a jump off. If this method is used then any ties for minor placings will also be decided by the time taken in the second phase of the second round.

- d) The aggregate times will be taken of the best three of all teams in the second round, so that any minor placings remaining after the jump-off are filled without the need of a further jump-off.
- e) If a team has four members, all four must jump in both rounds to qualify the whole team for the jump-off – i.e. any member of that team not jumping in both rounds may not jump in the jump-off.
- f) If a competitor is in a qualifying position for both their team and an individual place they will only jump off once.

Championships – In the event of an invited or International Team being the clear winner and there being two or more National Teams tying for second place, there will be a jump-off against the clock between one nominated member of each team involved to find the National Champions.

### **37. METHOD OF JUDGING – INDIVIDUAL COMPETITION**

#### **Open, Intermediate Novice and Regional Championships**

Only in exceptional circumstances and with the express permission of the Chairman of Show Jumping will a change of format/competition be considered at Area Competitions.

- a) **At the Area qualifiers for every level and at the Regional Championships**, the scores for all competitors in the Team

Competitions automatically count for this competition. In addition Branches may enter individuals irrespective of whether they have entered a team or not. The individual competitors who are NOT in a team will jump their round after the Team Members have jumped. Faults from the first round will be carried forward to the second round. If there is no clear winner those competitors placed equal-first after the two rounds will qualify for the jump-off which will be against the clock.

- b) In the event of there also being equality after the second round for a team qualifying place, the teams will jump-off first followed by any other team member and/or individual who according to faults over the two rounds is placed first equal in the individual competition.

All qualifying places will be decided by total faults in the two rounds or if necessary by time and faults in the jump off. In the event of a tie for non-qualifying places time in the second round will decide.

**Note: If a competitor is in a qualifying position for both their team and an individual place they will only jump off once.**

- c) The Championships
  - i. Intermediate and Open – There are two separate competitions at the Championships. This means a competitor can qualify for both the Individual and Team Championships.
  - ii. Competitors in the second round will jump in reverse order (i.e. the rider with the most faults will jump first; the clear rounds will jump last).  
Eliminations and Retirements will not jump in the second round. Unless otherwise stated above Rules and Conditions will be the same as for the Team Competition.

### **38. NUMBERS TO QUALIFY**

#### **a) TEAMS**

**OPEN** – The **top two teams** shall qualify.

**6** or more teams compete on the day = **3** teams qualify.

**10** teams compete on the day = **4** teams qualify.

**15 or more teams compete on the day = 5 teams qualify**

**INTERMEDIATE** – The Winning team shall qualify.

**6** or more teams compete on the day = **2** teams qualify. **12** or more

teams compete on the day = 3 teams qualify. **25 or more teams compete on the day = 4 teams qualify.**

**NOVICE** – The Winning team shall qualify.

**6 or more** teams competing on the day = 2 teams qualify.

**12 or more** or more teams competing on the day = 3 teams qualify.

**25 or more teams compete on the day = 4 teams qualify.**

**REGIONAL CHAMPIONSHIPS – The top 6 teams will qualify**

**b) INDIVIDUALS**

**Open** – The first 4 placed individual competitors will qualify.

**Intermediate** – The first 4 placed individual competitors will qualify.

N.B. The same combination of horse and rider may qualify for both the Team and Individual competitions as these are two separate competitions at the Championships. This applies to both the Open and Intermediate levels only.

**Novice – The first four eligible individuals (see rule 29) NOT in one of the qualifying teams for the Novice Championships.**

Open Novice –The first four individuals who are not eligible for the Novice Championships (see rule 29) will qualify for the Open Novice Individual Championships. Qualifiers must not have more than 8 jumping penalties over two rounds to be eligible.

**Regional Championships – the first 16 individuals not in one of the qualifying teams.**

The Show Jumping Committee may from time to time at their absolute discretion invite additional entries to the Championships at all levels.

**39. AWARDS – AREA COMPETITIONS**

- a) Rosettes are awarded to the Members of at least the first six teams and the first six individuals.
- b) Rosettes shall be awarded for Double Clears and Turnout at the Organiser's discretion.

#### 40. JURY OF APPEAL

**Area Competitions:** The Jury shall consist of the Official Steward, one of the Judges and the Organiser.

**The Championships:** The Jury shall consist of the Official Steward, one of the Judges and such Members of the Show Jumping Committee as are present.

At least three members of the Jury of Appeal must remain on the ground until half an hour after the scores have been published. The Official Steward may appoint a replacement for any member of the Jury if the need arises.

#### 41. PROTESTS OR OBJECTIONS

Apart from the Official Steward, the Area Representative and Officials of the Competition, only District Commissioners or their appointed representatives are entitled to lodge protests or objections. Protests must be made in writing and addressed to the Organiser of the Area Competition or Secretary of the Championships. They must be accompanied by a deposit, £50 at Area level and the Championships, which is forfeit unless the Jury of Appeal decides that there were good and reasonable grounds for the objection.

Protests or objections must be made not later than half an hour after the happening which gives rise to them or half an hour after the scores have been published. The Official Steward shall give his/ her decision in the first instance.

If this is not accepted, the Jury of Appeal shall give their decision after investigation and this decision is final.

Should a breach of eligibility subsequently be discovered, then the Sport Committee may disqualify the offending team or individual.

If said individual was a Member of a qualifying team and their score contributed to the qualification the team will be disqualified unless the qualification holds up using the discard score.

#### 42. BRANCH REPRESENTATIVES

If the District Commissioner of a competing Team is unable to be present at the competition he or she must inform the Organiser of the Area Competition or Secretary of the Championships, in writing, of the name of the person appointed to be his or her representative. The Representative must carry with him a copy of the District Commissioner letter of appointment.

### 43. OFFICIAL STEWARD

The Pony Club Show Jumping Committee shall appoint an Official Steward for each Area Competition who will contact the Organiser prior to the event to offer help/advice. He/she shall be responsible for inspecting and approving the course in conjunction with the BS Judge before it is shown to the riders. He/she is authorised to insist on alterations being made if, in his opinion, the course is not in all respects within the limits laid down in the Rules or is unsuitable for the Competition. He/she has absolute discretion to forbid the use of any bit or gadget which he considers cruel and shall adjudicate on any unforeseen eventualities.

He/she shall be present on the day of the Competition, to ensure that it is conducted in accordance with the Rules and to give what help and guidance may be required. He/she should satisfy himself that the Medical and Veterinary arrangements are in accordance with the rules. He/she is responsible for ensuring that the final results sheet is completed and signed. He/she shall not be given any other duty at the Competition.

At a competition running multiple rings the organiser must also appoint assistant stewards for the Official Steward. They will be briefed by the Official Steward at the start of the day and must be responsible for no more than two rings each. The assistant stewards must immediately report any incident to the Official Steward so that he/she can take further action. The assistant stewards may undertake another role such as manning the ring entrance or commentating but in this case they must only be given responsibility for stewarding the ring where they are working. Only the Official Steward is authorised to issue instructions or take decisions about the rules or the running of the event, the assistant stewards' role is to report to the Official Steward.

Official Stewards will retire from the Panel at 85 years of age.

### 44. MEDICAL AND VETERINARY

a) **Medical** – for further details please see the Health and Safety Rule Book or go to [pcuk.org](http://pcuk.org).

b) **Veterinary**

**Branch Activities and Competitions** – If a vet is required the member's parent will normally call their own vet and arrange treatment.

**Area** – Arrangements should be made for a Veterinary Surgeon to be 'on call' and able to attend the site in a reasonable time. The telephone number should be noted in the Secretary's Tent.



The Veterinary Surgeon and medical personnel and the Ambulance are best situated near Control/the ring. A tarpaulin should be available to cover a horse should one be killed, and the telephone number of the Hunt Kennels or Knacker noted in the Secretary's Tent. See the Health and Safety Rule Book for further information.

- c) **IT IS STRONGLY RECOMMENDED THAT ALL HORSES ARE VACCINATED AGAINST EQUINE 'FLU.** Vaccination Certificates and Passports should be carried with the horse to all competitions.

#### 45. RING STEWARDS

Organisers shall appoint stewards for the following purposes.

- a) To send competitors into the ring.
- b) To check saddlery and dress they should be provided with gloves and disinfectant so that they may check the bits more thoroughly.
- c) To watch the practice fences.
- d) To send competitors to the Turnout Judges and to assist the Turnout Judges if required.

#### 46. TURNOUT COMPETITIONS

- a) Organisers of Area Competitions may hold Turnout Competitions.
- b) Competitors shall be judged individually in the Collecting Ring before their first round and must report as a Team at least 30 minutes before the time they are scheduled to jump. A parade may be held before the second round at the discretion of the Organiser, or if the Judges wish to see Teams together in order to obtain a result.  
Uniformity of turnout within the team does not in itself earn extra marks.
- c) Riders and ponies shall appear for judging in the clothing and saddlery in which they are competing and these shall not be changed thereafter without reference to the Official Steward.
- d) Neither the Official Steward nor the Judges shall be asked to judge this competition.
- e) The Turnout Judges shall be genuine Pony Club workers with a clear and experienced knowledge of the standard required.
- f) Only Judges whose own turnout is beyond reproach should be appointed.

#### **47. EXPLANATION OF HORSEMANSHIP AWARD JUDGING (OPEN AND INTERMEDIATE)**

The Horsemanship Competition is an attempt to reward riders who show ability, talent and effectiveness. They will not necessarily have the best horses/ponies. Each rider is judged during the first round of the Open and Intermediate Team and Individual Show Jumping Championships.

The winners will be those who give their horses/ponies the greatest chance to jump a clear round by:

- a) Maintaining rhythm and balance.
- b) Intervening only when necessary to keep the horse/pony's attention and to help them to arrive on a good stride for the fence with sufficient impulsion to jump it easily.
- c) Giving their mounts the confidence to jump in a settled, supple way by sitting in an independent position (not dependent on the reins) and with an effective leg position at all times on the flat and while jumping.
- d) Riding good lines and corners – showing correct use of the arena space.

The round should appear purposeful and harmonious.

Judging begins the moment the rider enters the ring (preparation for the round), continues throughout the round and finishes when the rider leaves the ring – the Judges noting whether or not the horse/pony was improved or not as a result of the round.

Riders are judged individually. For team awards, the total marks of all four riders are counted. For teams of three the average mark of the three is taken and added on as the fourth score.

# GUIDELINES FOR TURNOUT JUDGES

## **HORSE**

- a) Healthy appearance
- b) Well groomed
- c) Appropriately trimmed
- d) Tidy mane and tail
- e) Well shod
- f) Clean, correctly fitted saddlery, in good repair
- g) If used, correct and tidy boots and bandages
- h) Proper use of keepers, martingales, etc.
- i) Polished bits, stirrups and other metal ware
- j) Any other points which may arise

## **RIDER**

- a) Plain equipment is recommended. Any extra detail will be marked down.
- b) Tidy hair and hat
- c) Clean, workmanlike clothing
- d) Smart shirt with tidy collar
- e) Neatly tied stocks or ties
- f) Garter straps (when boots permit)
- g) Clean, correctly fitting spurs and straps
- h) Clean badge
- i) No gimmicks which offend the eye

## BRITISH SHOWJUMPING – TABLE OF DEFINITIONS

<b>Table A4</b>	Against the clock. Competitors placed on faults and time.	
<b>Table A7</b>	Those placed first equal qualify for the jump off.	Against the clock. Competitors placed on faults and time.
<b>Two Phase</b>	<p>First phase: 7 to 9 obstacles not against the clock with a time allowed.</p> <p>Clear rounds continue straight on to the second phase without a bell being rung.</p>	<p>Second phase: 4 to 6 obstacles which must be higher than the first phase.</p> <p>Competitors placed on faults and time</p>

<b>Single Phase</b>	<p>First phase: 5 to 7 obstacles not against the clock with a time allowed.</p> <p>Unless eliminated, continue straight on to the second phase without a bell being rung.</p>	<p>Second phase: 5 to 7 obstacles which must be higher than the first phase, (maximum 12 obstacles in all).</p> <p>Competitors placed on total faults from both phases and time in second phase.</p>
---------------------	---	--

<b>Metres</b>	<b>Feet/Inches</b>	<b>Metres</b>	<b>Feet/Inches</b>	<b>Metres</b>	<b>Feet/Inches</b>
0.50	1' 7 ½"	1.10	3' 7 ½"	1.70	5' 7"
0.55	1' 9 ½"	1.15	3' 9 ½"	1.75	5' 9"
0.60	1' 11 ½"	1.20	3' 11"	1.80	5' 11"
0.65	2' 1 ½"	1.25	4' 1"	1.85	6' 1"
0.70	2' 3 ½"	1.30	4' 3"	1.90	6' 3"
0.75	2' 5 ½"	1.35	4' 5"	1.95	6' 5"
0.80	2' 7 ½"	1.40	4' 7"	2.00	6' 6 ½"
0.85	2' 9 ½"	1.45	4' 9"	2.05	6' 8 ½"
0.90	2' 11 ½"	1.50	4' 11"	2.10	6' 10 ½"
0.95	3' 1 ½"	1.55	5' 1"	2.15	7' ½"
1.00	3' 3 ½"	1.60	5' 3"	2.20	7' 2 ½"
1.05	3' 5 ½"	1.65	5' 5"	2.25	7' 4 ½"

## BRITISH SHOWJUMPING CLASSES AND HEIGHTS

### For Information only:

### British Showjumping classes and heights

---

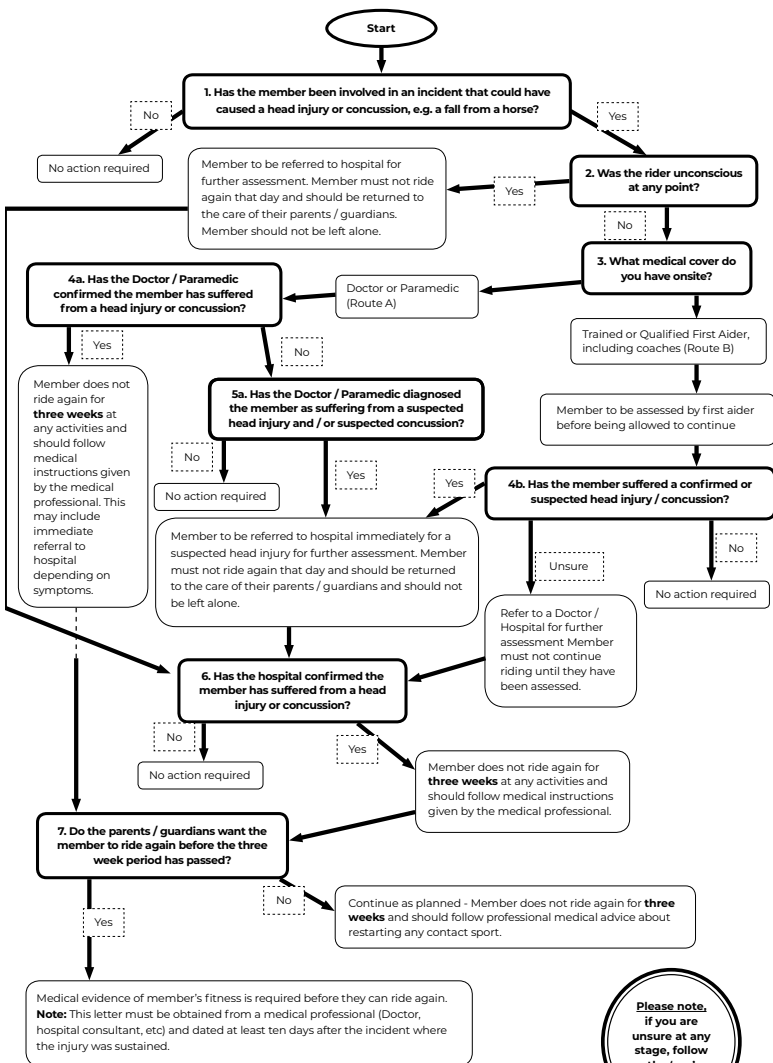
	<b>First round Height</b>	<b>Potentially affects PC level eligibility</b>
Pony British Novice Preliminary	80cm	None
Pony British Novice 2nd Round	85cm	None
Senior British Novice Preliminary	90cm	Regional Champs.
Pony Discovery Preliminary	90cm	Regional Champs.
Pony Discovery 2nd Round	95cm	Regional Champs.
Senior British Novice 2nd Round	1.00m	Regional Champs.
Senior Discovery Preliminary	1.00m	Regional Champs.
Pony Newcomers Preliminary	1.00m (two fences at 1.05m)	Regional Champs.
Senior Discovery 2nd Round	1.05m	Novice and below
Pony Newcomers 2nd Round	1.10m	Novice and below
Pony Foxhunter Preliminary	1.10m (two fences at 1.15m)	Novice and below
Senior Newcomers Preliminary	1.10m (two fences at 1.15m)	Novice and below
Pony Foxhunter 2nd Round	1.20m	Intermediate and below
Senior Foxhunter Preliminary	1.20m (two fences at 1.25m)	Intermediate and below
Senior Newcomers 2nd Round	1.25m	Intermediate and below
Senior Foxhunter 2nd Round	1.30m	Intermediate and below
B&C Handicap Championship	Grade C: 1.25m, Grade B: 1.30m	Intermediate and below
National 1.30m Open	1.30m	Intermediate and below
National 1.40 Open	1.40m	All levels
HOYS Grade C Championship	1.35m	All levels

**This table is for guidance and is not a complete list.**

**Please refer to the BS Member Handbook for more information.**

**To be used in conjunction with Rule 29 (Eligibility).**

## Head Injury and Concussion Flowchart



**Please note, if you are unsure at any stage, follow the 'yes' route.**





**The Pony Club** Stoneleigh Park, Kenilworth, Warwickshire CV8 2RW  
**Tel:** 02476 698300 **Fax:** 02476 696919 **Email:** [enquiries@pcuk.org](mailto:enquiries@pcuk.org)

Incorporated as a Company Limited By Guarantee Registered in England No: 3072475

[pcuk.org](http://pcuk.org)