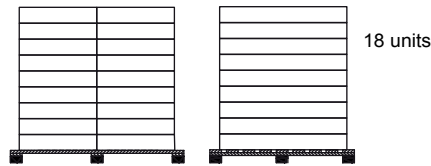
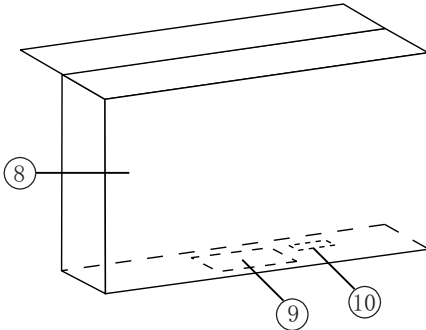
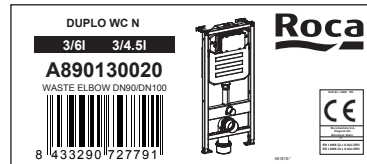


PACKAGING SPECIFICATIONS

- * Box (outside) size : 1180x530x205 mm
- * Corrugated carton board: double wall corrugated board BC Flute (6.5 mm), white color
- * Printed background on carton board
- * Closed by gluing



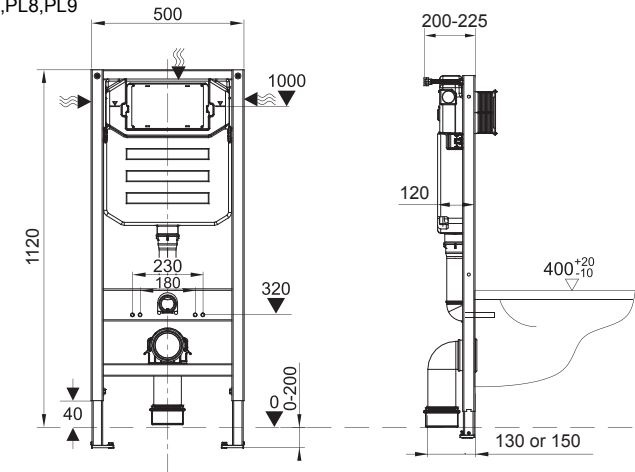
Label Size: 225 x 100 mm



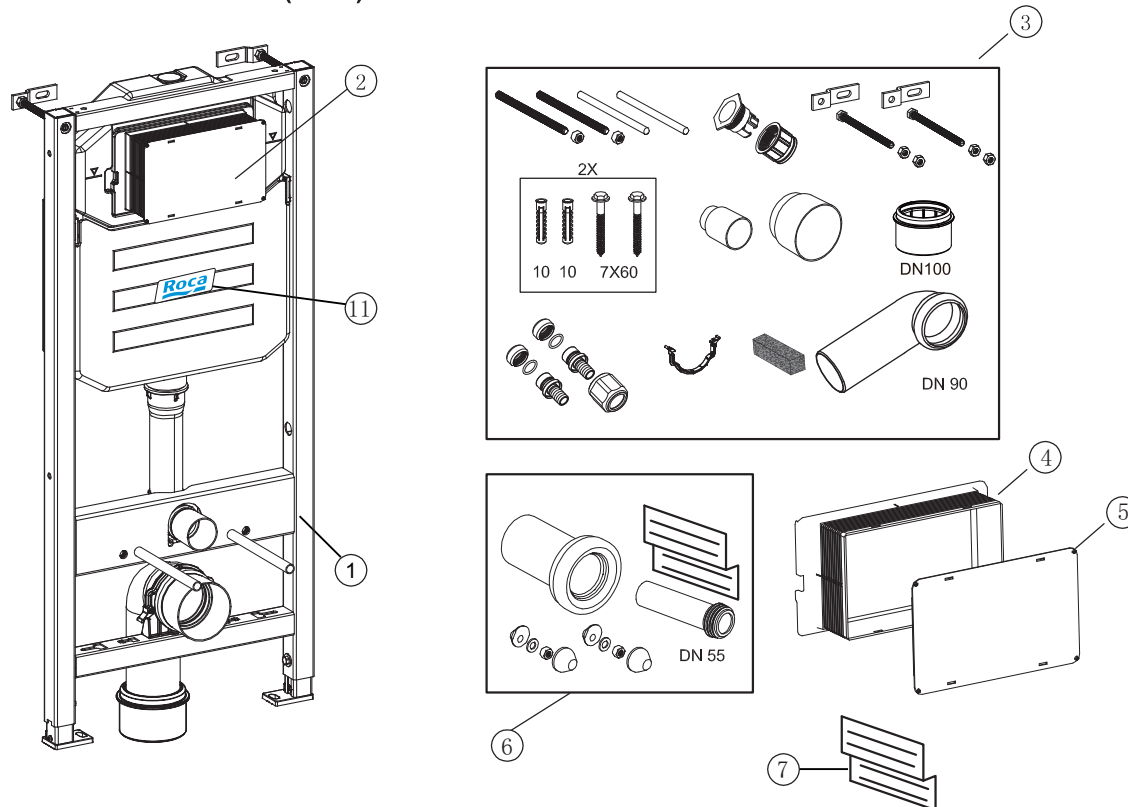
PRODUCT SPECIFICATIONS:

[mm]

- *Push plates admitted: PL1, PL2, PL3, PL4, PL5, PL6, PL8, PL9
- *Dual 6/3L, 4.5/3L or Single 6L, 4.5L
- Cistern:
 - *Inlet valve: WDI B3211 G3/8"
 - *R1/2" brass connection
 - *Flushing mechanism 2V ROCA
 - *EN 14055-CL1-6-NL I-VR II
 - *EN 14055-CL1-5-NL I-VR II



BILL OF MATERIALS (BOM):



Pos.	DESCRIPTION	QTY	ROCA CODE	WDI CODE	REV.
0	DUPLO COMPACT	1	A890130020	K132-A01-ERS1	
1	WC FRAME SUPPORT WITH CISTERN	1		K8028-G-1001	
2	TANK COMPONENT	1		K1132-G-1001	
3	SET OF ACCESSORIES	1		K9035-G-1258	
3.1	Bolts for WC pan fixation M12	2		211178	
3.2	Hyaloid canal	2		102022	
3.3	Fastening set	4		K80009	
3.4	Accessory of angle valve	1		K9103-G-1001	
3.5	Pipe clip	1		1K1178-01-01	
3.6	Wall Fixation	2		K80202	
3.7	Protective cap for flush pipe connector	1		1K426-00-02	
3.8	Protective cap for drainage bend pipe	1		1K425-00-02	
3.9	WC Connector 90° DN100 for in-wall module	1		K9502	
3.10	Adaptor DN90/DN100	1		1K865-01-02	
3.11	Fixed nut	1		1K2093-00-01	
4	PROTECTION FRAME	1		1K1499-00-01	
5	PROTECTION COVER	1		1K1500-00-01	
6	WC INSTALLATION SET	1		K9036-G-1022	
6.1	Cover-up Accessories	2		1K420-00-2C	
6.2	Flush Pipe Connector	1		1K723-01-01	
6.3	WC Horizontal Connector DN90	1		1K1836-00-01	
6.4	WC Installation Instructions Sheet	1		560*	
7	DUPLO COMPACT INSTRUCTION SHEET	1		560*	
8	DUPLO COMPACT CARTON BOX	1		511869.*	
9	DUPLO COMPACT LABEL	1		581816.*	
10	TRACEABILITY LABEL	1		581821.*	
11	ROCA BRAND LABEL	1		583378	

Version	Date	Name	MATERIAL:	
			MATERIAL:	
Created by:	Date:	Name:	Roca	K132-A01-ERS1
Dibujado:				
Checked by:				DUPLO WC N
Revisado:				
FINISHING:				A890130020
ACABADO:				VERSION: 1.0
WEIGHT:				SHEET N° Hoja N°
PESO:				