

## Kitchen device shut-off valve

Surfaces: **Stainless Steel Finish**

Article Number: **10823800**



### Description

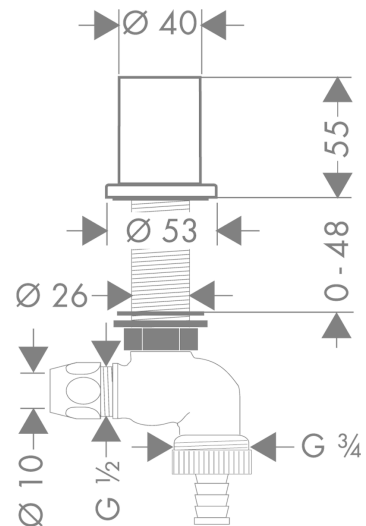
#### product features

- purpose of use: for counter surfaces up to 47 mm thick
- shaft  $\varnothing$  27 mm
- non-return valve
- connection dimension DN15
- device connection DN20

### Product image



### Scale drawing



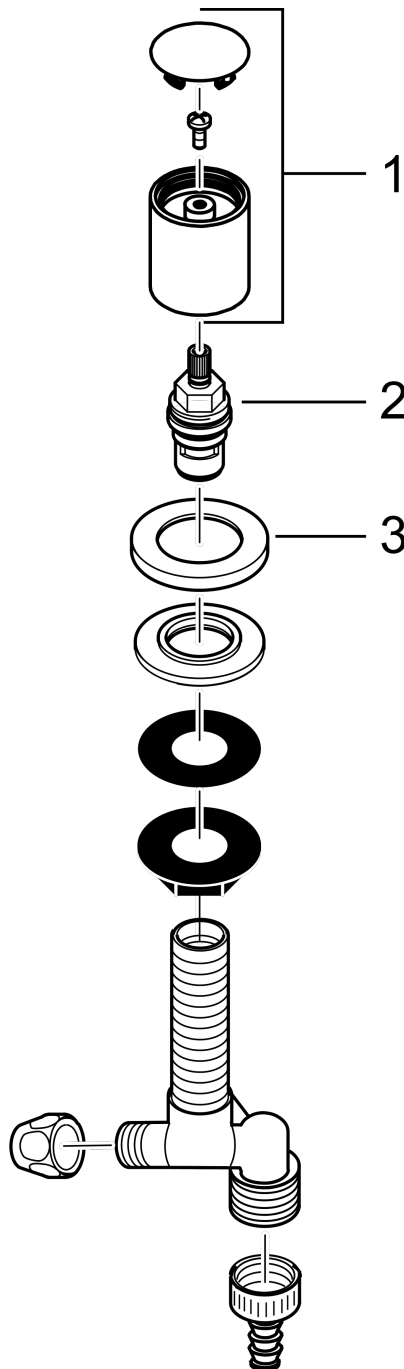
**Kitchen device shut-off valve**  
Surfaces: **Stainless Steel Finish**

Article Number: **10823800**



## Exploded Drawing

Year of production: >01/12



**Kitchen device shut-off valve**

Surfaces: **Stainless Steel Finish** Article Number: **10823800**



**Spare part list**

Year of production: >01/12

Pos.	Description	Article Number	PC	PU
1	handle	96495800	0	1
2	shut off unit with non return valve	95054000	0	1
3	escutcheon Ø 53 mm	94115800	0	1