



WALTHER-WERKE
FORTSCHRITT SEIT 1897

NEO - MORE THAN A PLUG

THE EVOLUTION OF CEE PLUG + SOCKET DEVICES

NEO

More than a plug



THIS IS HOW PROGRESS LOOKS LIKE NEO – THE NEW GENERATION OF CEE PLUGS

Already in the 1960s, WALTHER-WERKE caused a worldwide stir with their proposal for an international standard for industrial plugs and sockets (IEC 60309), formerly known as CEE17. Today, just 50 years later, the Eisenberg based company made up again to set a new scale. With the help of worldwide discussions with users and partners, ideas have been collected in order to develop a new generation of plugs and sockets to cover today's and tomorrow's technical requirements.

Evolution and differentiation



1910



1966



1977

NEO

More than a plug



2006



2018

MAXIMUM USER BENEFITS

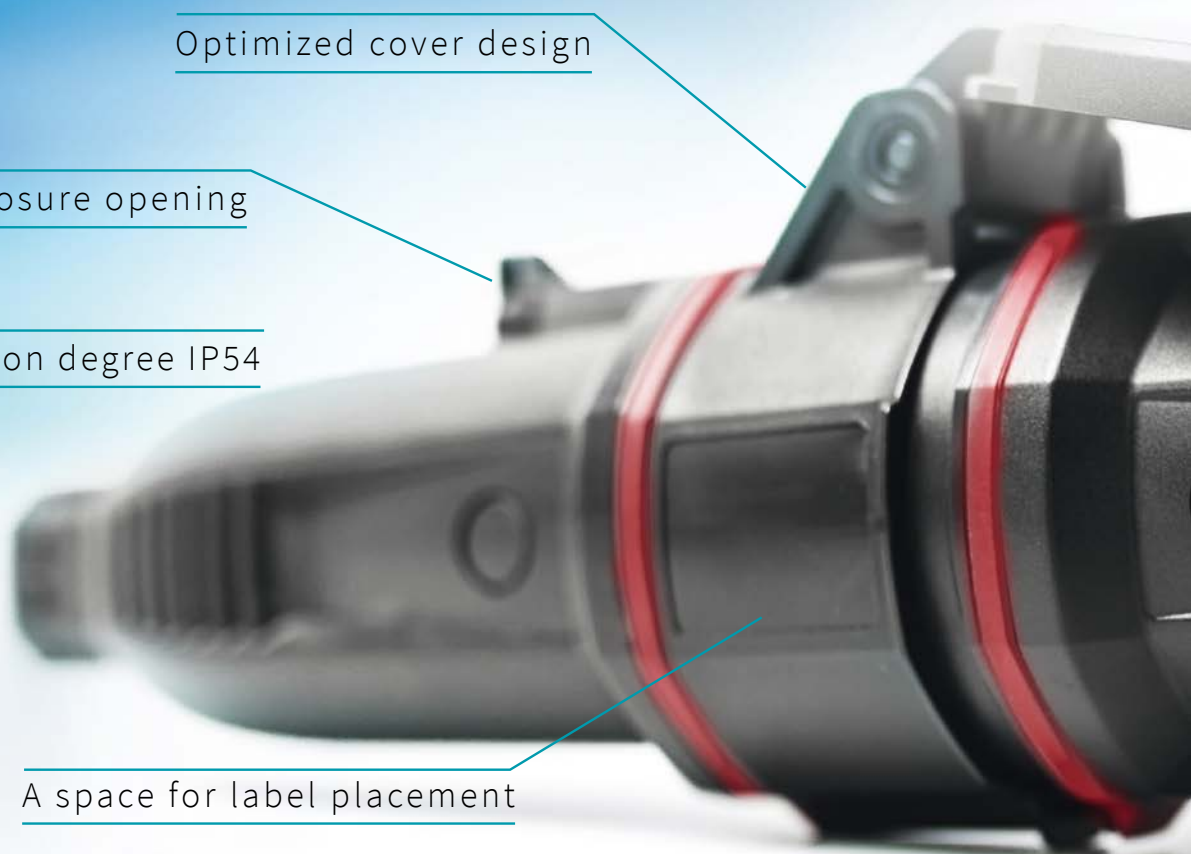
A BUNDLE OF PRODUCT ADVANTAGES

Optimized cover design

Easy enclosure opening

Increased protection degree IP54

A space for label placement



Easier and better in every way:

The new CEE NEO generation stands for a lot of practical and innovative solutions. Three product variations for different requirements have been developed: Classic, One-Touch and IPD.

Fast and easy connection with the unique One-Touch locking system

With just a quarter-turn, the connection is made between front and back part of the plug. At the same time, the enclosed strain relief is activated. There is also an acoustic feedback which serves as confirmation that the plug is closed - thus contributing to maximum product safety during operation. The tensile forces are acting directly on the cable and prevent material fatigue of the strain relief.

Easy and safe operation thanks to improved connection technology

A spring-clamp-connection (CAGE-CLAMP®) enables a screwless and time saving connection. The internationally proven connection clamping levers ensure easy operation and allow frequent reconnection. WAGO's CAGE-CLAMP® connection technology has gained worldwide acceptance due to all of its major international approvals.

The use of Torx screws at the screw terminal provides optimum power transmission and a longer lifespan of the screw heads.

Unique design

More than a plug

Improved connection technique

User-friendly ergonomics

IPD system integration

One-Touch locking system

Optimized cover construction enables easy insertion of plug and coupler

With an enlarged opening angle of 217 degrees, the coupler cover is designed in a way that it can be optimally held in the open position. This design avoids possible threading or breaking off the cover.

Robust materials and improved geometries provide additional stability.

Additional advantages

Labeling areas for compliance labels and identity codes have been added and the overall user-friendliness has been further improved, e.g. the horizontal working angle at the opening of the enclosure, which prevents the risk of injury by slipping. The standard degree of protection has been increased from IP44 to IP54.

A strong enclosure design due to specific material selection and well thought out geometries ensure a long service life of the product, even under harsh environmental conditions.

Color rings for voltage marking conforming to standards are a part of NEO's unique product design.

Ready for Industry 4.0

In the future, an optional circuit board within the front part of the plug will enable requirements in the area of Industry 4.0 to be implemented. Coupled with the functionalities of Intelligent Power Distribution (IPD) by WALTHER-WERKE, NEO plug and socket devices can communicate their status to a superordinated software level. This makes power distributions holistically intelligent and controllable for the user.

THREE VARIANTS FOR DIFFERENT REQUIREMENTS



NEO

Classic



Classic application

Traditional product design with external strain relief at the smallest possible size.

NEO

One-Touch



Professional application

Optimized for fastest assembly and reconnectability, maximum operational safety.

NEO

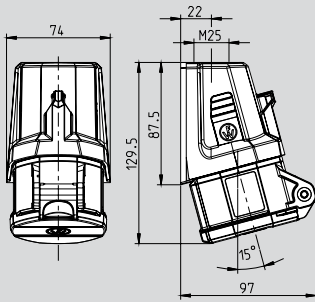
IPD



Future-oriented application

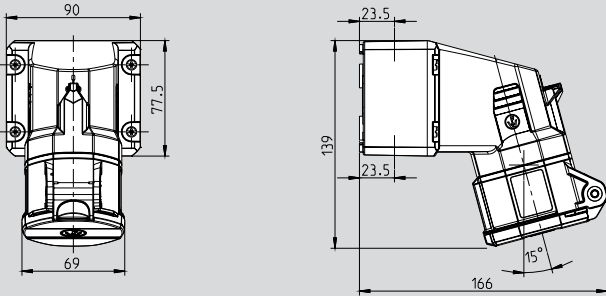
Developed for IoT applications with data collection and data transmission.

CEE NEO wall sockets
Enclosure made of PA66 material with
high heat resistant contact carrier made of PA66 material



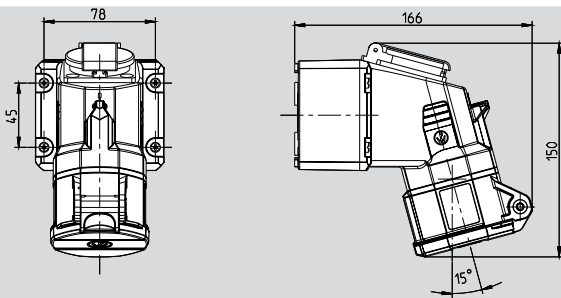
CEE NEO wall sockets
16A 5P IP54
with one top cable entry

CC = Cage clamp
SK = Screw terminal connection



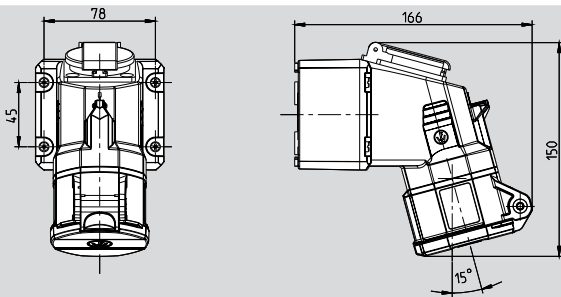
CEE NEO wall sockets
16A 5P IP54,
3 knock-out cable entries on top/bottom

CC = Cage clamp
SK = Screw terminal connection
01 = Push-in terminal block



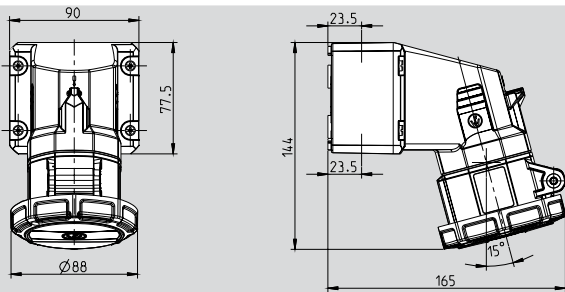
CEE NEO wall sockets
Mini combination 16A 5P IP54
with Schuko socket, unfused

CC = Push-in terminal block
SK = Screw terminal block





CEE NEO wall sockets
Mini combination 16A 5P IP54
with Schuko socket, fused

03 = Push-in terminal block
04 = Screw terminal block



CEE NEO wall sockets
16A 5P IP67
3 knock-out cable entries on top/bottom

CC = Cage clamp
SK = Screw terminal connection
01 = Push-in terminal block

Ampère	Poles	110 V	230 V	400 V	690 V	500 V	> 50 - 500 V over		 3 P+N+E
		50 and 60 Hz	50 and 60 Hz	50 and 60 Hz	50 and 60 Hz	50 and 60 Hz	300 - 500 Hz		
		5-pole 4 h	5-pole 9 h	5-pole 6 h	5-pole 5 h	5-pole 7 h	5-pole 2 h		

Part numbers


Ampère	Poles	110 V	230 V	400 V	690 V	500 V	> 50 - 500 V over	Quantity
16	5	FW110504CC	FW110509CC	FW110506CC	FW110505CC	FW110507CC	FW110502CC	10/60
16	5	FW110504SK	FW110509SK	FW110506SK	FW110505SK	FW110507SK	FW110502SK	10/60
16	5	FW111504CC	FW111509CC	FW111506CC	FW111505CC	FW111507CC	FW111502CC	5
16	5	FW111504SK	FW111509SK	FW111506SK	FW111505SK	FW111507SK	FW111502SK	5
16	5	FW11150401	FW11150901	FW11150601	FW11150501	FW11150701	FW11150201	5
16	5			FW112506CC				5
16	5			FW112506SK				5
16	5			FW11250603				5
16	5			FW11250604				5
16	5	FW119504CC	FW119509CC	FW119506CC	FW119505CC	FW119507CC	FW119502CC	5
16	5	FW119504SK	FW119509SK	FW119506SK	FW119505SK	FW119507SK	FW119502SK	5
16	5	FW11950401	FW11950901	FW11950601	FW11950501	FW11950701	FW11950201	5



CEE NEO Plugs

Enclosure made of PA66 material with high heat resistant contact carrier made of PA66 material and nickel-plated contacts

	<p>CEE NEO plugs 16A 5P IP54 ONE-TOUCH with automatically activating strain relief</p> <p>CC = Cage clamp SK = Screw terminal connection</p>
	<p>CEE NEO plugs 16A 5P IP54 Classic with external cable gland with strain relief</p> <p>CC = Cage clamp SK = Screw terminal connection PH = Phase inverter</p>
	<p>CEE NEO plugs 16A 5P IP67 Classic with external cable gland with strain relief</p> <p>CC = Cage clamp SK = Screw terminal connection PH = Phase inverter</p>
	<p>CEE NEO plugs 16A 5P IP67 ONE-TOUCH with automatically activating strain relief</p> <p>CC = Cage clamp SK = Screw terminal connection</p>
	<p>Empty description area.</p>
	<p>Empty description area.</p>

Ampère	Poles	110 V	230 V	400 V	690 V	500 V	> 50 - 500 V over	
		50 and 60 Hz	50 and 60 Hz	50 and 60 Hz	50 and 60 Hz	50 and 60 Hz	300 - 500 Hz	
		5-pole 4 h	5-pole 9 h	5-pole 6 h	5-pole 5 h	5-pole 7 h	5-pole 2 h	



3 P + N + E

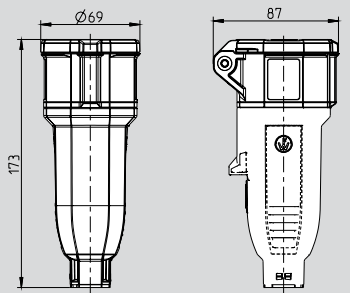
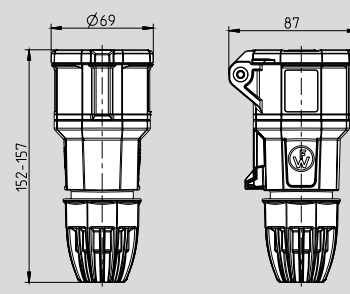
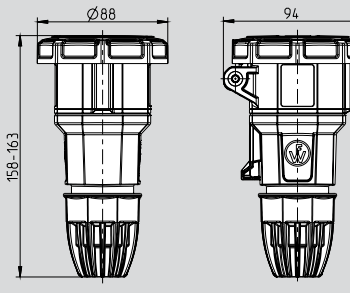
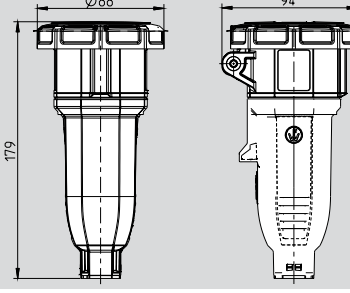
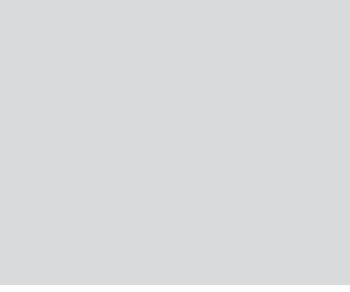
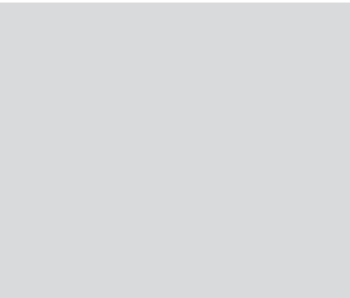
Part numbers


Ampère	Poles	110 V	230 V	400 V	690 V	500 V	> 50 - 500 V over	Rating
16	5	FW210504CC	FW210509CC	FW210506CC	FW210505CC	FW210507CC	FW210502CC	5/60
16	5	FW210504SK	FW210509SK	FW210506SK	FW210505SK	FW210507SK	FW210502SK	5/60
16	5	FW211504CC	FW211509CC	FW211506CC	FW211505CC	FW211507CC	FW211502CC	5/60
16	5	FW211504SK	FW211509SK	FW211506SK	FW211505SK	FW211507SK	FW211502SK	5/60
16	5	FW211504PH	FW211509PH	FW211506PH	FW211505PH	FW211507PH	FW211502PH	5/60
16	5	FW218504CC	FW218509CC	FW218506CC	FW218505CC	FW218507CC	FW218502CC	5/60
16	5	FW218504SK	FW218509SK	FW218506SK	FW218505SK	FW218507SK	FW218502SK	5/60
16	5	FW218504PH	FW218509PH	FW218506PH	FW218505PH	FW218507PH	FW218502PH	5/60
16	5	FW219504CC	FW219509CC	FW219506CC	FW219505CC	FW219507CC	FW219502CC	5/60
16	5	FW219504SK	FW219509SK	FW219506SK	FW219505SK	FW219507SK	FW219502SK	5/60



CEE NEO Couplers

Enclosure made of PA66 material with high heat resistant contact carrier made of PA66 material and nickel-plated contacts

	<p>CEE NEO couplers 16A 5P IP54 ONE-TOUCH with automatically activating strain relief</p> <p>CC = Cage clamp SK = Screw terminal connection</p>
	<p>CEE NEO couplers 16A 5P IP54 Classic with external cable gland with strain relief</p> <p>CC = Cage clamp SK = Screw terminal connection</p>
	<p>CEE NEO couplers 16A 5P IP67 Classic with external cable gland with strain relief</p> <p>CC = Cage clamp SK = Screw terminal connection</p>
	<p>CEE NEO couplers 16A 5P IP67 ONE-TOUCH with automatically activating strain relief</p> <p>CC = Cage clamp SK = Screw terminal connection</p>
	<p>Empty description area.</p>
	<p>Empty description area.</p>

Ampère	Poles	110 V	230 V	400 V	690 V	500 V	> 50 - 500 V over	
		50 and 60 Hz	50 and 60 Hz	50 and 60 Hz	50 and 60 Hz	50 and 60 Hz	300 - 500 Hz	
		5-pole 4 h	5-pole 9 h	5-pole 6 h	5-pole 5 h	5-pole 7 h	5-pole 2 h	



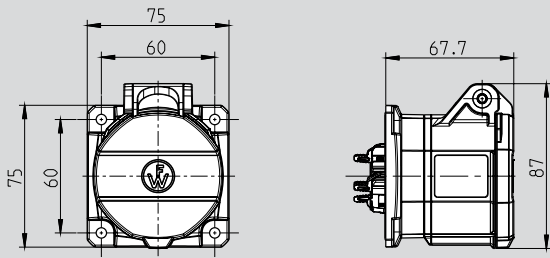
3 P + N + E

Part numbers

Ampère	Poles	110 V	230 V	400 V	690 V	500 V	> 50 - 500 V over	
16	5	FW310504CC	FW310509CC	FW310506CC	FW310505CC	FW310507CC	FW310502CC	5/60
16	5	FW310504SK	FW310509SK	FW310506SK	FW310505SK	FW310507SK	FW310502SK	5/60
16	5	FW311504CC	FW311509CC	FW311506CC	FW311505CC	FW311507CC	FW311502CC	5/60
16	5	FW311504SK	FW311509SK	FW311506SK	FW311505SK	FW311507SK	FW311502SK	5/60
16	5	FW318504CC	FW318509CC	FW318506CC	FW318505CC	FW318507CC	FW318502CC	5/60
16	5	FW318504SK	FW318509SK	FW318506SK	FW318505SK	FW318507SK	FW318502SK	5/60
16	5	FW319504CC	FW319509CC	FW319506CC	FW319505CC	FW319507CC	FW319502CC	5/60
16	5	FW319504SK	FW319509SK	FW319506SK	FW319505SK	FW319507SK	FW319502SK	5/60

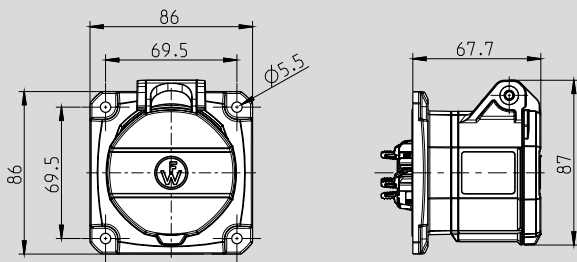


CEE NEO Panel sockets
Enclosure made of PA66 material with high heat resistant
contact carrier made of PA66 material and nickel-plated contacts



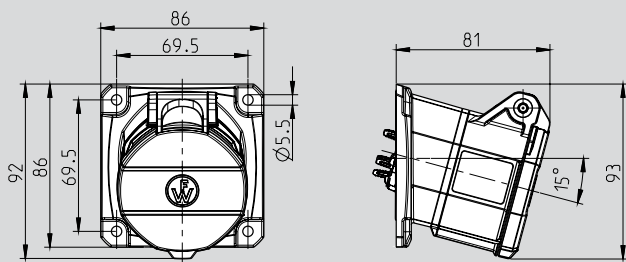
CEE NEO panel socket, straight
16A 5P IP54
Flange 75x75mm

CC = Cage clamp
SK = Screw terminal connection



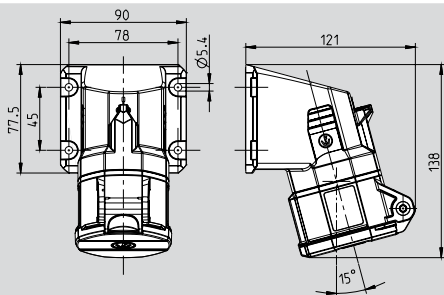
CEE NEO panel socket, straight
16A 5P IP54
Flange 86x86mm

CC = Cage clamp
SK = Screw terminal connection





CEE NEO panel socket, angled
16A 5P IP54
Flange 86x86mm

CC = Cage clamp
SK = Screw terminal connection



CEE NEO panel socket, angled
16A 5P IP54
with attached housing
Flange 77,5x90mm

CC = Cage clamp
SK = Screw terminal connection

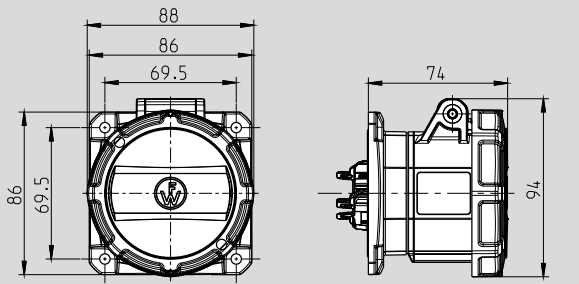
Ampère	Poles	110 V	230 V	400 V	690 V	500 V	> 50 - 500 V over		 3 P+N+E
		50 and 60 Hz	50 and 60 Hz	50 and 60 Hz	50 and 60 Hz	50 and 60 Hz	300 - 500 Hz		
		5-pole 4 h	5-pole 9 h	5-pole 6 h	5-pole 5 h	5-pole 7 h	5-pole 2 h		

Part numbers

Ampère	Poles	110 V	230 V	400 V	690 V	500 V	> 50 - 500 V over	Mounting
16	5	FW410504CC	FW410509CC	FW410506CC	FW410505CC	FW410507CC	FW410502CC	10/60
16	5	FW410504SK	FW410509SK	FW410506SK	FW410505SK	FW410507SK	FW410502SK	10/60
16	5	FW411504CC	FW411509CC	FW411506CC	FW411505CC	FW411507CC	FW411502CC	10/60
16	5	FW411504SK	FW411509SK	FW411506SK	FW411505SK	FW411507SK	FW411502SK	10/60
16	5	FW510504CC	FW510509CC	FW510506CC	FW510505CC	FW510507CC	FW510502CC	10/60
16	5	FW510504SK	FW510509SK	FW510506SK	FW510505SK	FW510507SK	FW510502SK	10/60
16	5	FW513504CC	FW513509CC	FW513506CC	FW513505CC	FW513507CC	FW513502CC	10/60
16	5	FW513504SK	FW513509SK	FW513506SK	FW513505SK	FW513507SK	FW513502SK	10/60

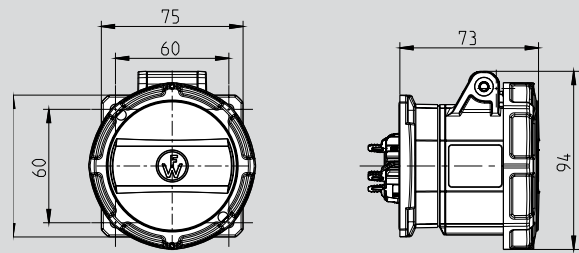


CEE NEO Panel sockets
Enclosure made of PA66 material with high heat resistant
contact carrier made of PA66 material and nickel-plated contacts



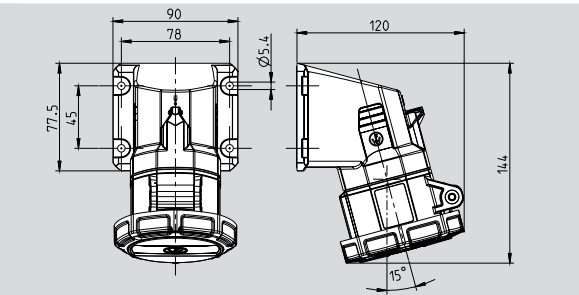
CEE NEO panel socket, straight
16A 5P IP67
Flange 86x86mm

CC = Cage clamp
SK = Screw terminal connection



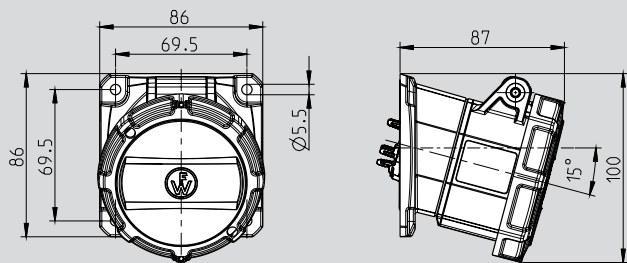
CEE NEO panel socket, straight
16A 5P IP67
Flange 86x86mm

CC = Cage clamp
SK = Screw terminal connection



CEE NEO panel socket, angled
16A 5P IP67
with attached housing
Flange 77,5x90mm

CC = Cage clamp
SK = Screw terminal connection



CEE NEO panel socket, angled
16A 5P IP67
Flange 86x86mm

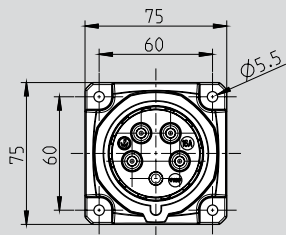
CC = Cage clamp
SK = Screw terminal connection

Ampère	Poles	Voltage						Part numbers		Image
		110 V 50 and 60 Hz 5-pole 4 h	230 V 50 and 60 Hz 5-pole 9 h	400 V 50 and 60 Hz 5-pole 6 h	690 V 50 and 60 Hz 5-pole 5 h	500 V 50 and 60 Hz 5-pole 7 h	> 50 - 500 V over 300 - 500 Hz 5-pole 2 h			
16 16	5 5	FW418504CC FW418504SK	FW418509CC FW418509SK	FW418506CC FW418506SK	FW418505CC FW418505SK	FW418507CC FW418507SK	FW418502CC FW418502SK	10/60 10/60		
16 16	5 5	FW419504CC FW419504SK	FW419509CC FW419509SK	FW419506CC FW419506SK	FW419505CC FW419505SK	FW419507CC FW419507SK	FW419502CC FW419502SK	10/60 10/60		
16 16	5 5	FW518504CC FW518504SK	FW518509CC FW518509SK	FW518506CC FW518506SK	FW518505CC FW518505SK	FW518507CC FW518507SK	FW518502CC FW518502SK	5 5		
16 16	5 5	FW519504CC FW519504SK	FW519509CC FW519509SK	FW519506CC FW519506SK	FW519505CC FW519505SK	FW519507CC FW519507SK	FW519502CC FW519502SK	10/60 10/60		



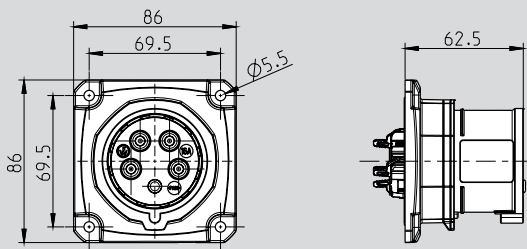
3 P + N + E

CEE NEO Panel mounted inlets / wall mounted inlets
Enclosure made of PA66 material with high heat resistant
contact carrier made of PA66 material and nickel-plated contacts



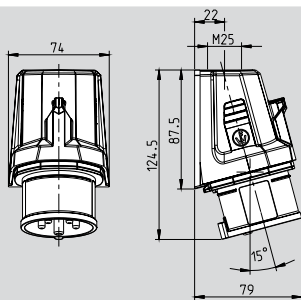
CEE NEO panel mounted inlet, straight
16A 5P IP54
Flange 75x75mm

CC = Cage clamp
SK = Screw terminal connection
PH = Phase inverter with screw terminal connection



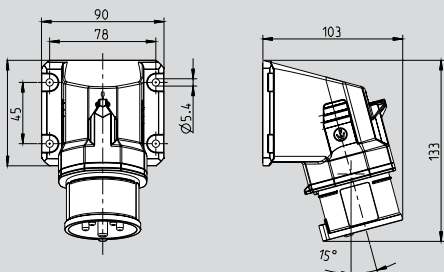
CEE NEO panel mounted inlet, straight
16A 5P IP54
Flange 86x86mm

CC = Cage clamp
SK = Screw terminal connection
PH = Phase inverter with screw terminal connection



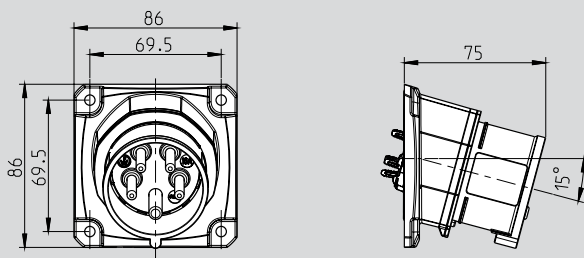
CEE NEO wall mounted inlet, angled
16A 5P IP54
with one top cable entry

CC = Cage clamp
SK = Screw terminal connection
PH = Phase inverter with screw terminal connection



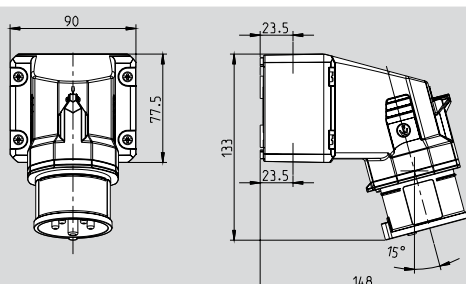
CEE NEO panel mounted inlet, angled
16A 5P IP54
with attached housing
Flange 77,5x90mm

CC = Cage clamp
SK = Screw terminal connection
PH = Phase inverter with screw terminal connection



CEE NEO panel mounted inlet, angled
16A 5P IP54
Flange 86x86mm


CC = Cage clamp
SK = Screw terminal connection
PH = Phase inverter with screw terminal connection



CEE NEO wall mounted inlet, angled
16A 5P IP54,
3 knock-out cable entries on top/bottom

CC = Cage clamp
SK = Screw terminal connection
PH = Phase inverter with screw terminal connection

CEE NEO Panel / Wall Mounted Inlets

Ampère	Poles	110 V	230 V	400 V	690 V	500 V	> 50 - 500 V over	
		50 and 60 Hz	50 and 60 Hz	50 and 60 Hz	50 and 60 Hz	50 and 60 Hz	300 - 500 Hz	
		5-pole 4 h	5-pole 9 h	5-pole 6 h	5-pole 5 h	5-pole 7 h	5-pole 2 h	



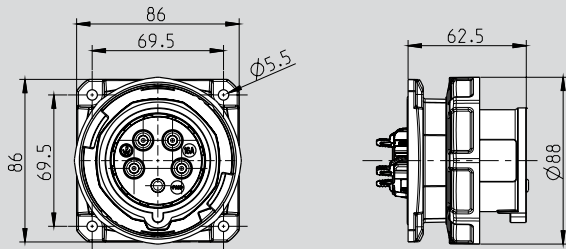
3 P + N + E

Part numbers

Ampère	Poles	110 V	230 V	400 V	690 V	500 V	> 50 - 500 V over	10/60
16	5	FW610504CC	FW610509CC	FW610506CC	FW610505CC	FW610507CC	FW610502CC	10/60
16	5	FW610504SK	FW610509SK	FW610506SK	FW610505SK	FW610507SK	FW610502SK	10/60
16	5	FW610504PH	FW610509PH	FW610506PH	FW610505PH	FW610507PH	FW610502PH	10/60
16	5	FW611504CC	FW611509CC	FW611506CC	FW611505CC	FW611507CC	FW611502CC	10/60
16	5	FW611504SK	FW611509SK	FW611506SK	FW611505SK	FW611507SK	FW611502SK	10/60
16	5	FW611504PH	FW611509PH	FW611506PH	FW611505PH	FW611507PH	FW611502PH	10/60
16	5	FW710504CC	FW710509CC	FW710506CC	FW710505CC	FW710507CC	FW710502CC	10/60
16	5	FW710504SK	FW710509SK	FW710506SK	FW710505SK	FW710507SK	FW710502SK	10/60
16	5	FW710504PH	FW710509PH	FW710506PH	FW710505PH	FW710507PH	FW710502PH	10/60
16	5	FW711504CC	FW711509CC	FW711506CC	FW711505CC	FW711507CC	FW711502CC	10/60
16	5	FW711504SK	FW711509SK	FW711506SK	FW711505SK	FW711507SK	FW711502SK	10/60
16	5	FW711504PH	FW711509PH	FW711506PH	FW711505PH	FW711507PH	FW711502PH	10/60
16	5	FW713504CC	FW713509CC	FW713506CC	FW713505CC	FW713507CC	FW713502CC	10/60
16	5	FW713504SK	FW713509SK	FW713506SK	FW713505SK	FW713507SK	FW713502SK	10/60
16	5	FW713504PH	FW713509PH	FW713506PH	FW713505PH	FW713507PH	FW713502PH	10/60
16	5	FW714504CC	FW714509CC	FW714506CC	FW714505CC	FW714507CC	FW714502CC	10/60
16	5	FW714504SK	FW714509SK	FW714506SK	FW714505SK	FW714507SK	FW714502SK	10/60
16	5	FW714504PH	FW714509PH	FW714506PH	FW714505PH	FW714507PH	FW714502PH	10/60

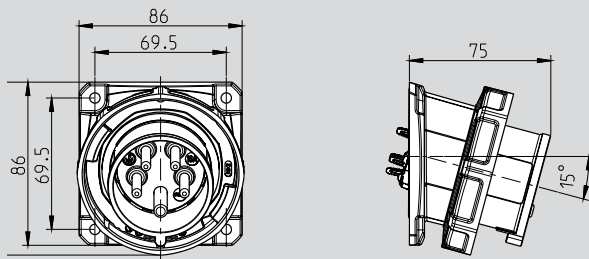


CEE NEO Panel mounted inlets / wall mounted inlets
Enclosure made of PA66 material with high heat resistant
contact carrier made of PA66 material and nickel-plated contacts



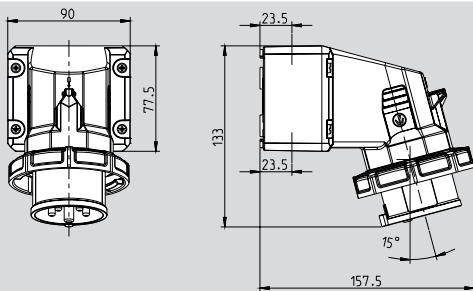
CEE NEO panel mounted inlet, straight
16A 5P IP67
Flange 86x86mm

CC = Cage clamp
SK = Screw terminal connection
PH = Phase inverter with screw terminal connection



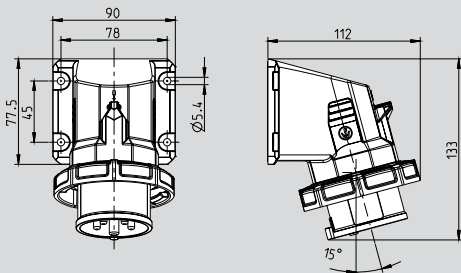
CEE NEO panel mounted inlet, angled
16A 5P IP67
Flange 86x86mm

CC = Cage clamp
SK = Screw terminal connection
PH = Phase inverter with screw terminal connection



CEE NEO wall mounted inlet, angled
16A 5P IP67,
3 knock-out cable entries on top/bottom


CC = Cage clamp
SK = Screw terminal connection
PH = Phase inverter with screw terminal connection



CEE NEO panel mounted inlet, angled
16A 5P IP67
with attached housing
Flange 77,5x90mm

CC = Cage clamp
SK = Screw terminal connection
PH = Phase inverter with screw terminal connection

CEE NEO Panel / Wall Mounted Inlets

Ampère	Poles	110 V	230 V	400 V	690 V	500 V	> 50 - 500 V over	
		50 and 60 Hz	50 and 60 Hz	50 and 60 Hz	50 and 60 Hz	50 and 60 Hz	300 - 500 Hz	
		5-pole 4 h	5-pole 9 h	5-pole 6 h	5-pole 5 h	5-pole 7 h	5-pole 2 h	



3 P+N+E

Part numbers

Ampère	Poles	110 V	230 V	400 V	690 V	500 V	> 50 - 500 V over	Quantity
16	5	FW619504CC	FW619509CC	FW619506CC	FW619505CC	FW619507CC	FW619502CC	10/60
16	5	FW619504SK	FW619509SK	FW619506SK	FW619505SK	FW619507SK	FW619502SK	10/60
16	5	FW619504PH	FW619509PH	FW619506PH	FW619505PH	FW619507PH	FW619502PH	10/60
16	5	FW717504CC	FW717509CC	FW717506CC	FW717505CC	FW717507CC	FW717502CC	10/60
16	5	FW717504SK	FW717509SK	FW717506SK	FW717505SK	FW717507SK	FW717502SK	10/60
16	5	FW717504PH	FW717509PH	FW717506PH	FW717505PH	FW717507PH	FW717502PH	10/60
16	5	FW718504CC	FW718509CC	FW718506CC	FW718505CC	FW718507CC	FW718502CC	5
16	5	FW718504SK	FW718509SK	FW718506SK	FW718505SK	FW718507SK	FW718502SK	5
16	5	FW718504PH	FW718509PH	FW718506PH	FW718505PH	FW718507PH	FW718502PH	5
16	5	FW719504CC	FW719509CC	FW719506CC	FW719505CC	FW719507CC	FW719502CC	5
16	5	FW719504SK	FW719509SK	FW719506SK	FW719505SK	FW719507SK	FW719502SK	5
16	5	FW719504PH	FW719509PH	FW719506PH	FW719505PH	FW719507PH	FW719502PH	5



NEO IPD

The CEE plug and socket device NEO IPD is a system component in the context of Intelligent Power Distribution // IPD from WALTHER-WERKE. More information at www.ipd.energy.

The prefabricated extensions or connection cables contain a circuit board with bluetooth function which is integrated into the plug and socket device.

NEO IPD-BTS: By inserting the plug, the circuit board is supplied with power and it establishes a communication with the higher-level IPD system via bluetooth and GSM. If the power supply is unintentionally disconnected, activities as defined in the IPD portal are then triggered (e.g. e-mail to security service, switching of alarm systems, etc.).


NEO IPD-BTT: For maximum operational safety, this version is equipped with a temperature sensor. If a preset limit temperature of e.g. 60 °C is exceeded, the LED ring on the plug & socket device signals this status by flashing and simultaneously sending a message to the IPD portal. Further functionalities such as indication of rotation direction, monitoring of neutral and protective conductor as well as phase control are in the planning stage.




Cable assemblies

Your benefits:


- Cables from premium brand manufacturers
- Cables for max. current carrying capacity acc. to IEC 60364-5-52 / VDE 0298-4
- Approved for construction sites and farms
- High quality plugs and couplers
- High quality standards, each cable with attached test report
- Short delivery times, standard lengths available from stock

	Ampère	Poles	Protection degree	Cable rubber	400 V 50 and 60 Hz	 3 P + N + E
				Length	5-pole 6 h	
Part numbers						

Standard cables

CEE NEO plug + CEE NEO coupler 16A 5P IP54 ONE-TOUCH with automatically activating strain relief CC = Cage clamp	16	5	IP54	5 m H07RN-F 5G2,5	39100502050100	
				10 m H07RN-F 5G2,5	39100502100100	
				25 m H07RN-F 5G2,5	39100502250100	

NEO IPD cables with integrated bluetooth function

CEE NEO plug, IPD with BT BT = Bluetooth + CEE NEO coupler CC = Cage clamp 16A 5P IP54 ONE-TOUCH with automatically activating strain relief	16	5	IP54	5 m H07RN-F 5G2,5	39100502050200	
				10 m H07RN-F 5G2,5	39100502100200	
				25 m H07RN-F 5G2,5	39100502250200	

WALTHER-WERKE
Ferdinand Walther GmbH
Ramsener Straße 6
67304 Eisenberg

www.walther-werke.de

WW 10351/III-18/1/Z - ENGLISCH

