

ADAX
NORWEGIAN DESIGN SINCE 1948

www.adax.no

info@adax.no

QUICK GUIDE



Installation Guide



Wifi Set-up Guide

ADAX
NORWEGIAN DESIGN SINCE 1948

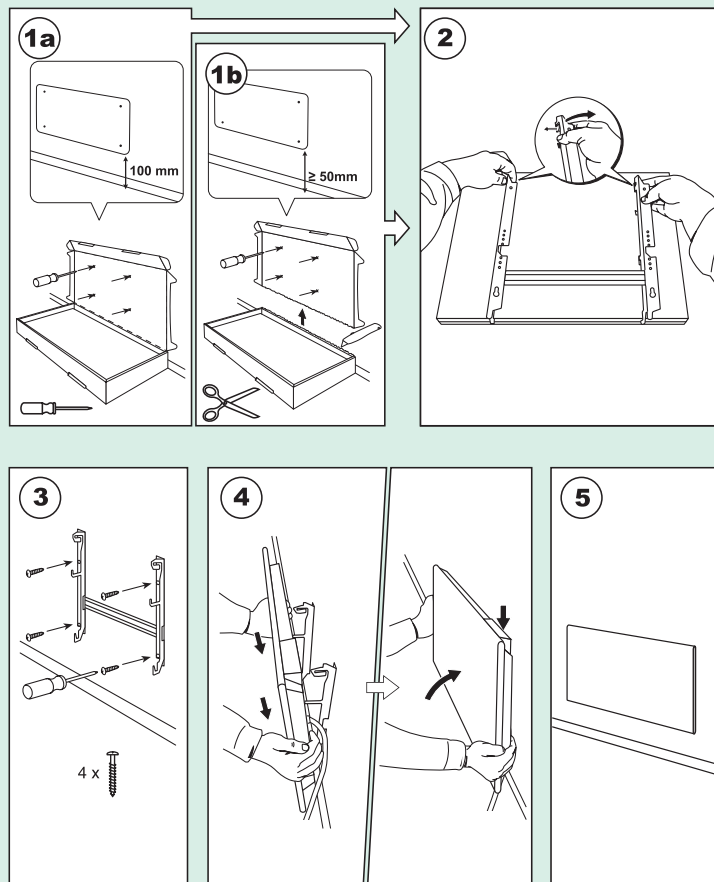
WELCOME

Our products are not like everyone else. We believe that through innovative solutions and a respect to our 70 year old Norwegian heritage and craftsmanship, we can deliver products of high quality. Your new Adax Neo panel heater is no exception. We would like to congratulate you with your new Adax Neo and are thankful for choosing us.

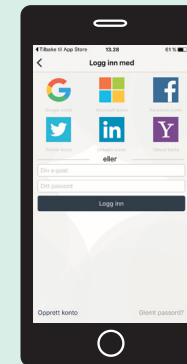
Warm wishes from Adax - Norwegian design since 1948

System requirements:
The router must be set up with 2,4 GHz and WPA2

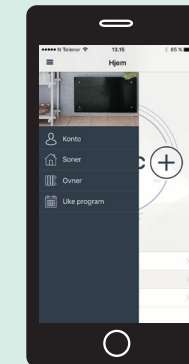
Quick Installation Guide

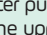
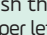


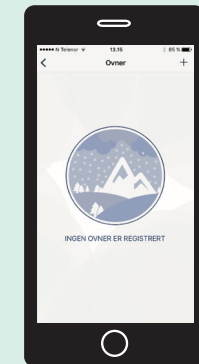
Quick Installation Guide-Wifi Set Up



1. Download the "Adax Wifi" app and create user


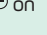


2. To install the new heater push the  icon in the upper left corner. Push the  Heaters icon.



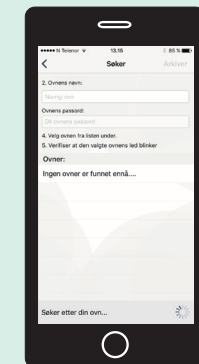
3. Push the + icon



4. Enter your Wifi SSID and password, then push and hold  and  on your heater.



5. Hold the buttons until "SC" gets visible in the display. Push "Search for heater" in the app.



6. Name your heater, ex. "livingroom". Select the heater from the list and push "Save".