



# MASTER LEDtube InstantFit HF T5

## MAS LEDtube HF 1200mm HO 26W 840 T5

Philips MASTER LEDtube InstantFit T5 integrates a LED light source into a traditional fluorescent form factor. Its unique design creates a perfectly uniform visual appearance which cannot be distinguished from traditional fluorescent. The Philips MASTER LEDtube InstantFit T5 is the ideal solution for customers who have higher light output requirements and want to maximize value over lifetime. Full energy savings & longer lifetime result in attractive payback times and TCO benefits.

### Product data

General Information		Power (Rated) (Nom)	
Cap-Base	G5 [ G5]		26 W
Nominal Lifetime (Nom)	50000 h	Lamp Current (Max)	700 mA
Switching Cycle	50000X	Lamp Current (Min)	450 mA
B50L70	50000 h	Starting Time (Nom)	0.5 s
		Warm Up Time to 60% Light (Nom)	0.5 s
		Voltage (Nom)	50-60 V
Light Technical		Temperature	
Color Code	840 [ CCT of 4000K]	T-Ambient (Max)	45 °C
Luminous Flux (Nom)	3900 lm	T-Ambient (Min)	-20 °C
Luminous Flux (Rated) (Nom)	3900 lm	T-Storage (Max)	65 °C
Correlated Color Temperature (Nom)	4000 K	T-Storage (Min)	-40 °C
Color Consistency	<6		
Color Rendering Index (Nom)	83		
LLMF At End Of Nominal Lifetime (Nom)	70 %		
Operating and Electrical		Controls and Dimming	
Input Frequency	35000-80000 Hz	Dimmable	No

# MASTER LEDtube InstantFit HF T5

## Mechanical and Housing

**Product Length** 1200 mm

## Approval and Application

**Energy Saving Product** Yes

**Energy Efficiency Label (EEL)** A++

**Approval Marks** TUV CE marking RoHS compliance KEMA Keur certificate

**Energy Consumption kWh/1000 h** 31 kWh

## Product Data

**Full product code** 871869670529200

**Order product name** MAS LEDtube HF 1200mm HO 26W 840 T5

**EAN/UPC - Product** 8718696705292

**Order code** 929001338402

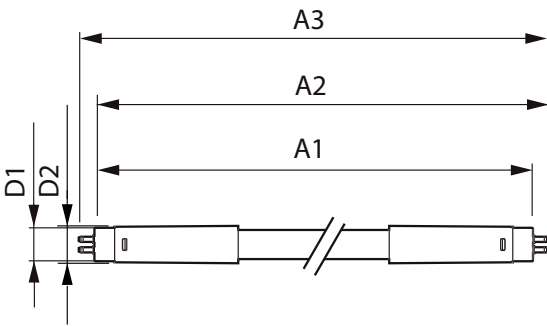
**Numerator - Quantity Per Pack** 1

**Numerator - Packs per outer box** 10

**Material Nr. (12NC)** 929001338402

**Net Weight (Piece)** 0.155 kg

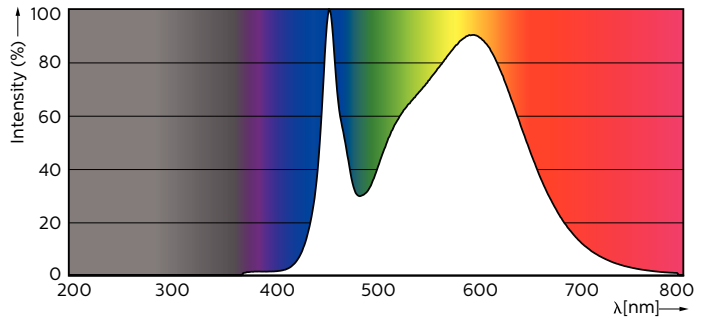
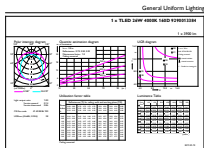
## Dimensional drawing



TLED 1200mm 26-49W 3900lm 4000K G5 ND

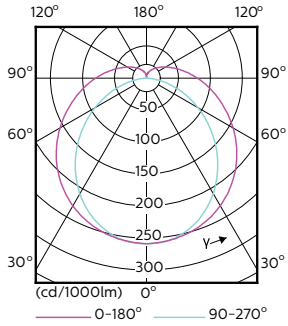
Product	D1	D2	A1	A2	A3
MAS LEDtube HF 1200mm HO 26W 840 T5	15.2 mm	21 mm	1147.8 mm	1154.9 mm	1162 mm

## Photometric data

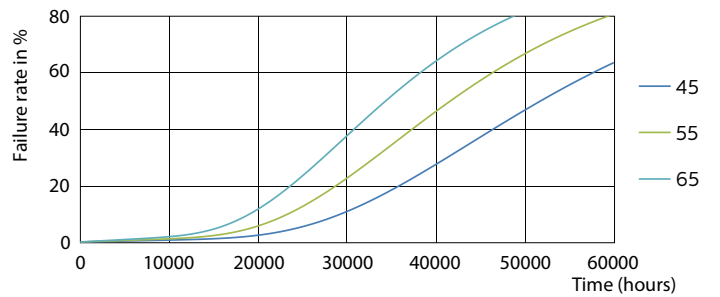
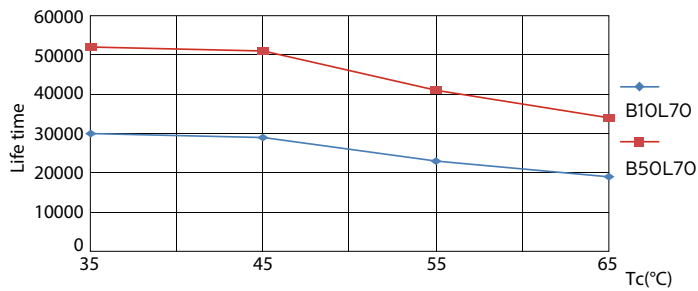
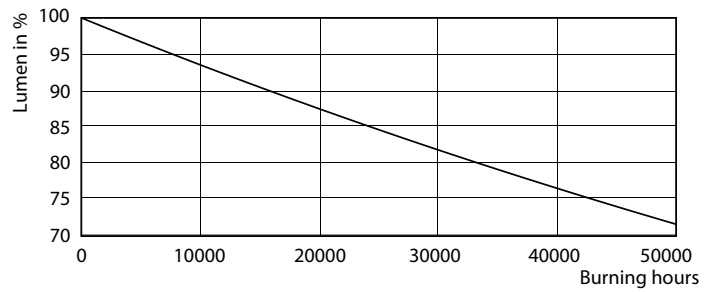
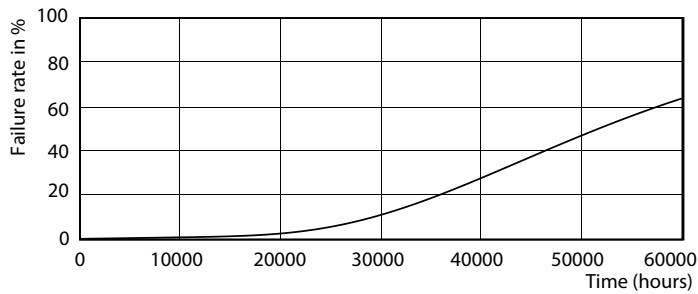


# MASTER LEDtube InstantFit HF T5

## Photometric data



## Lifetime

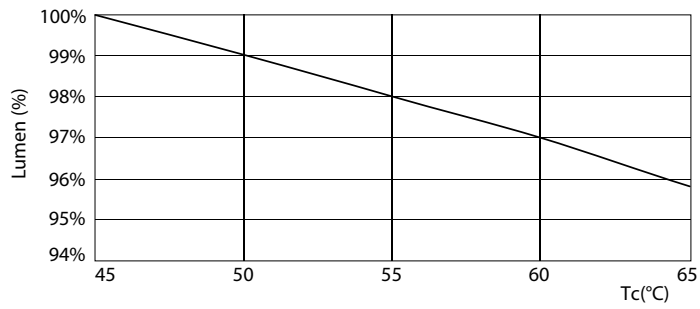


LEDtube 1200mm 26W G5 3900lm

LEDtube 1200mm 26W G5 3900lm

# MASTER LEDtube InstantFit HF T5

## Lifetime



LEDtube 1200mm 26W G5 3900lm

