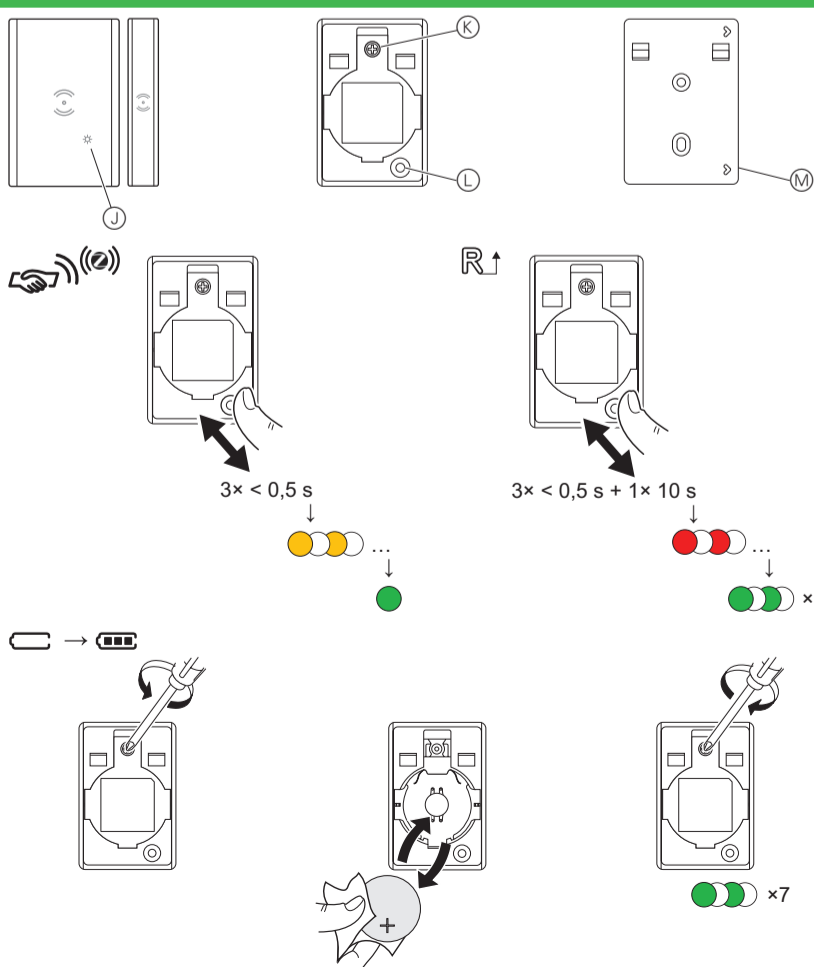
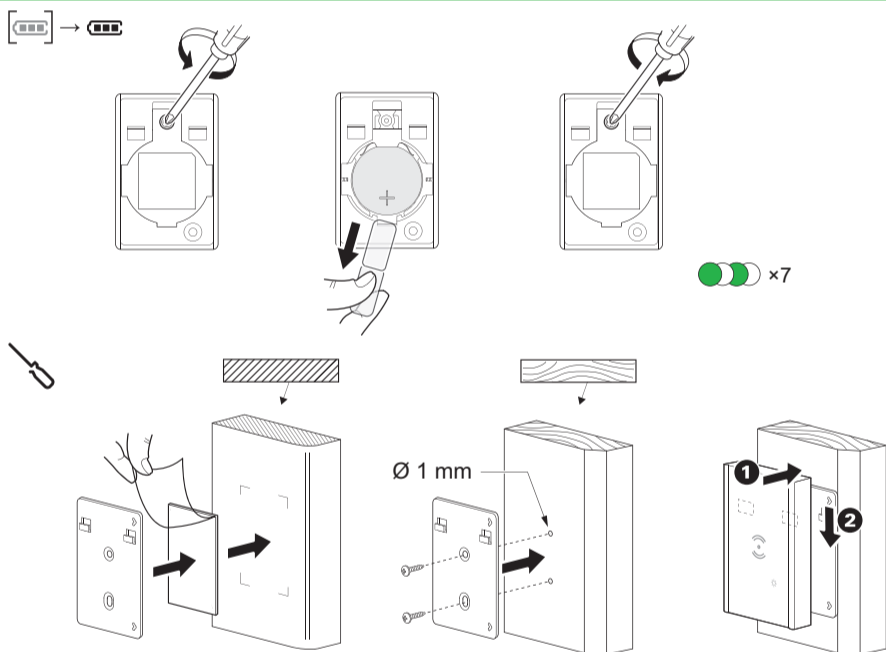
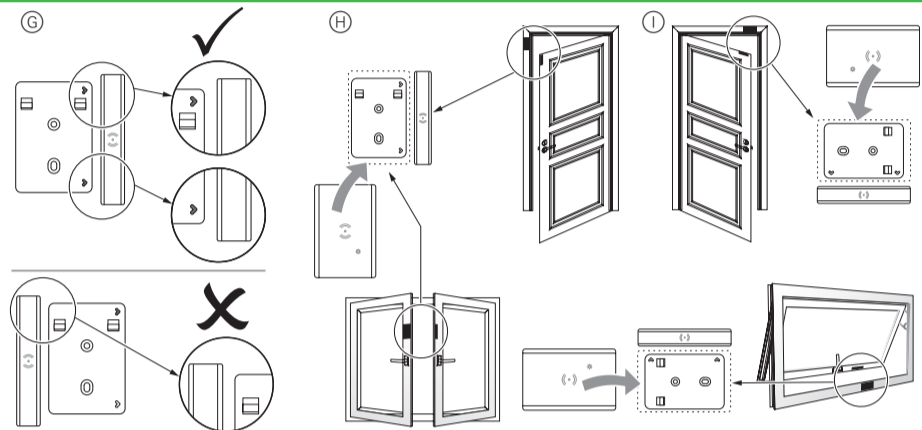
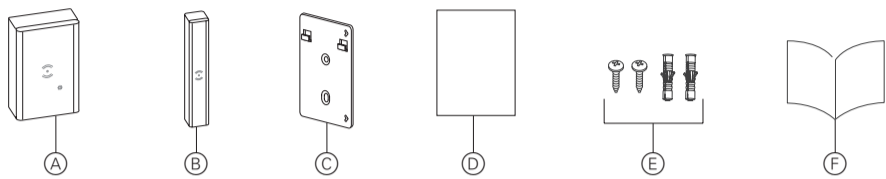


550B1023


**Forudsætninger**

Download **Wisir app'en** til din smartphone / tablet, og installer **Wisir Gateway** for at konfigurere og styre dine Wisir enheder.

**Yderligere information**

Detaljeret produktinformation er tilgængelig online i **systemvejledningen**: Scan QR-koden eller følg linket.


<https://www1.lk.dk/wisir>
**For din sikkerhed**
**ADVARSEL**
**RISIKO FOR SKADE PÅ ENHEDEN**

Brug altid produktet i overensstemmelse med de specificerede tekniske data.

**Manglende overholdelse af disse instruktioner kan resultere i skader på udstyr.**

**Lær produktet at kende**

Wisir trådløs dør- og vindue-sensor (i det følgende benævnt **sensor**) består af to separate dele: Master og slave. Master har et detekterings-kredsløb, der detekterer slavedelen. Slavedelen er en magnet.

Når sensoren er tilsluttet Wisir Gateway og vinduet / døren åbnes eller lukkes, rapporterer masterdelen direkte ændringen til Gateway.

Når batteriet er lavt (mindre end 10%), blinker status lysdiode orange en gang pr. minut, og en meddelelse sendes til Gateway'en.

**Indhold i pakken**

- (A) Master-del (detekterings-kredsløb)
- (B) Slavedel (magnet)
- (C) Montageplade
- (D) Selvklæbende pude
- (E) Skruer: 2 × ST4,2 × 25 mm med vægplugs
- (F) Installations instruktioner

**Valg af installationslokation**

Installér master- og slavedelene i henhold til det foreslåede sted:

- (G) Korrekt og forkert justering af slavedel / montageplade
- (H) Lodrette monteringsindstillinger
- (I) Vandrette monteringsindstillinger

**Montering af sensor**
**Fjernelse af batteriets isolationsfilm**

**Montering**

- i** Til træ- eller plastoverflader skal du bruge enten klæbepuden eller monteringsskrue.
- Hvis du bruger skrue, skal du forborre et hul på 1 mm.
- Brug kun selvklæbende puder til metaloverflader.
- For ikke at forringe sensorens ydeevne, skal du ikke installere sensoren i nærheden af den magnetiske enhed.
- Når vinduet / døren er i tættest på, skal afstanden mellem hoveddelen og slavedelen af sensoren være <math><18\text{ mm}</math> for en ikke-metallisk materialer (f.eks. træ- eller plastoverflader) og <math><10\text{ mm}</math> for metallisk materialer.

**Betjeningselementer**

- (J) Status lysdiode
- (K) Bunddæksel skrue
- (L) Funktionsknap
- (M) Monteringsplade

**Indstilling af sensoren**

**i** Fjern masteren fra monteringspladen for at få adgang til funktionsknappen (L).

**Opretter forbindelse til Wisir Gateway**

- 1 Tryk kortvarigt (<math><0,5\text{ s}</math>) på funktionsknappen 3 gange. Sensoren søger efter et tilgængelige Zigbee-netværk. Status lysdioden bliver grøn, når sensoren tilsluttes til Wisir Gateway.
- 2 Følg instruktionerne i Wisir app'en for at indstille sensorparametre gennem Wisir Gateway.

**Reset sensor**

Tryk kortvarigt (<math><0,5\text{ s}</math>) på funktionstasten 3 gange, og tryk derefter lang tid på funktionstasten i >math>10\text{ sekunder}</math> for at nulstille sensoren til fabriksindstillingen.

**i** Alle konfigurationsdata, brugerdata og netværksdata slettes.

**Udskiftning af batteri**
**Betydning af status lysdiode**

Se systemvejledning.

**Fejlfindning**

Se systemvejledning.

**Tekniske data**

Batteri	3 V d.c., CR2450
Batteri levetid	Op til 5 år (kan variere afhængig af brug, hyppighed af firmwareopdatering og miljø)
Mærkeeffekt	≤90 mW
Frekvensområde	2,4 GHz
Maks. Transmitteret effekt	≤7 dBm
Kapslingsklasse	IP20
Driftstemperatur	-10 °C til 50 °C
Relativ fugtighed	10 % til 95 %
Master del dimensioner (H × B × D)	50,3 × 33,0 × 16,3 mm
Slavedel-dimensioner (H × B × D)	50 × 9 × 9 mm
EU deklaration	1003632-0
Certificering	Zigbee 3.0



Bortskaf enheden separat fra husholdningsaffald på et godkendt opsamlingssted. Professionel genanvendelse beskytter mennesker og miljø mod potentielle negative effekter.

**Varemærker**

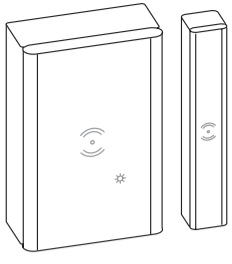
- Zigbee® er et registreret varemærke tilhørende Zigbee Alliance.
  - Apple® og App Store® er mærkenavne eller registrerede varemærker tilhørende Apple Inc.
  - Google Play™ Store og Android™ er mærkenavne eller registrerede varemærker tilhørende Google Inc.
- Andre mærker og registrerede varemærker tilhører deres relevante ejere.

**EU-overensstemmelseserklæring**

Schneider Electric Danmark A/S erklærer hermed, at dette produkt er i overensstemmelse med de væsentlige krav og andre relevante bestemmelser i RADIO EQUIPMENT DIRECTIVE 2014/53 / EU. Overensstemmelseserklæringen kan downloades på adressen [se.com/docs](http://se.com/docs).

**Lauritz Knudsen**

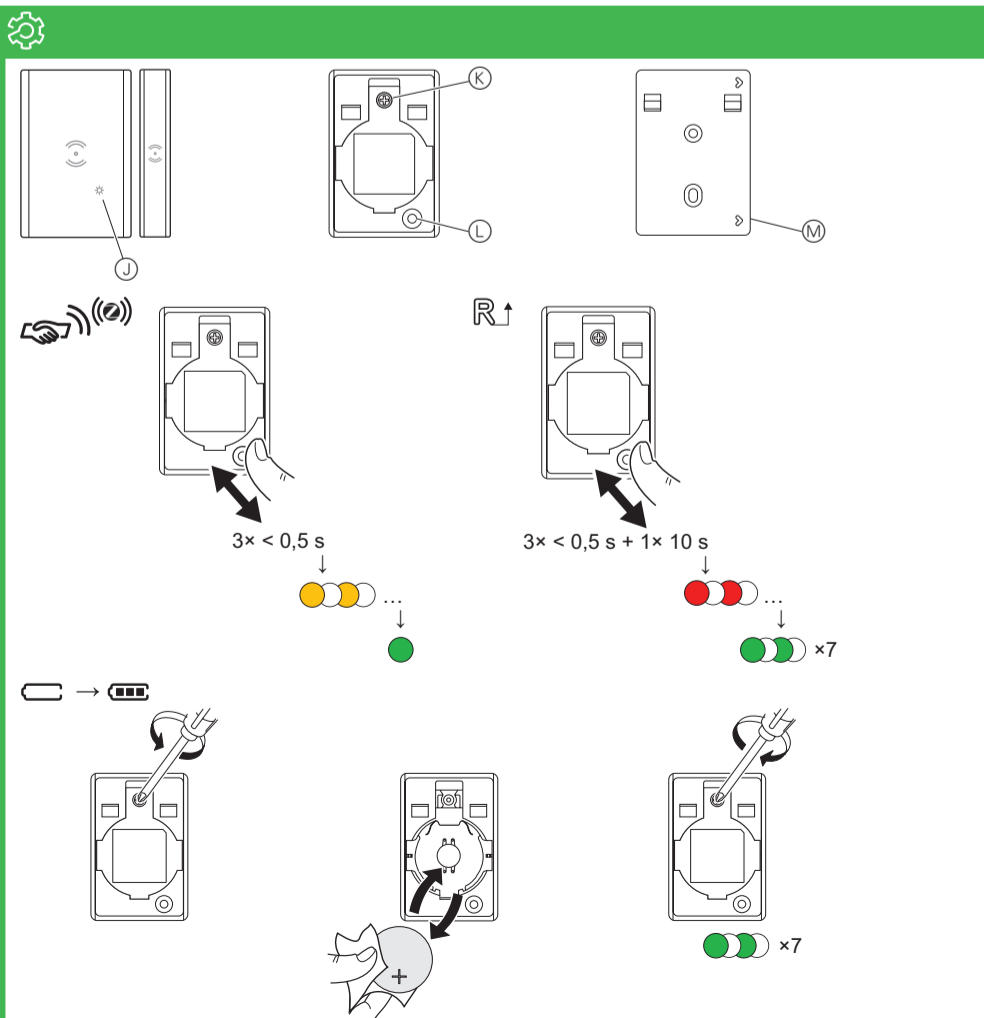
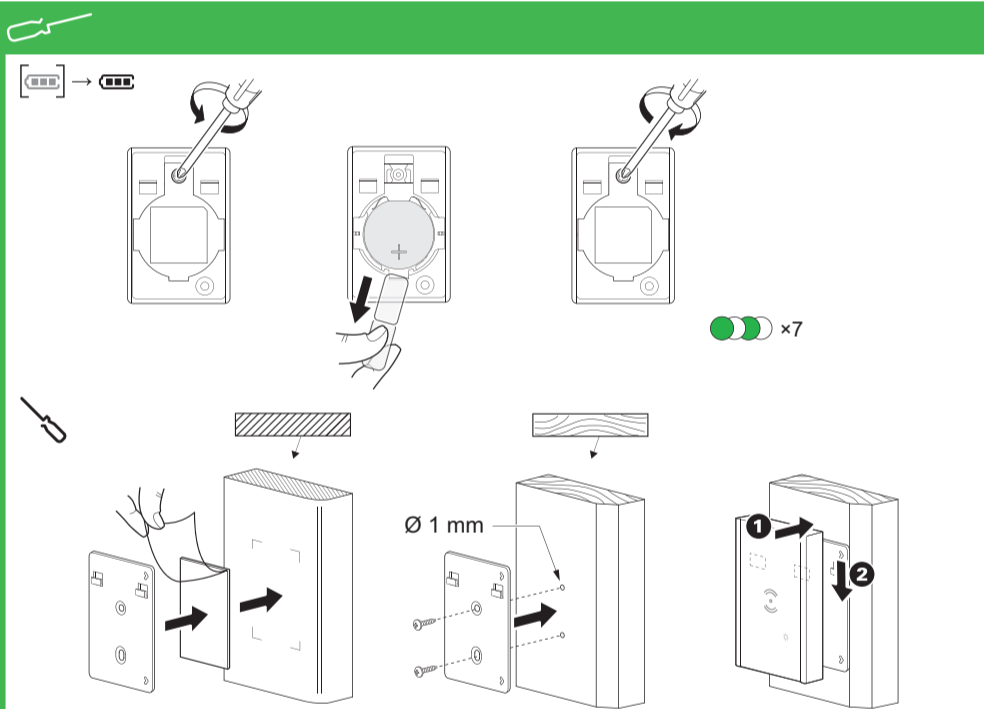
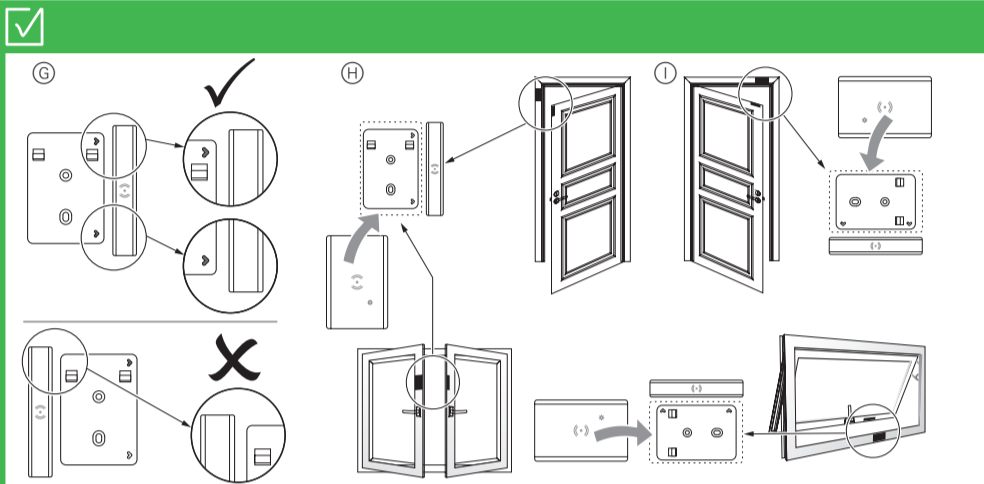
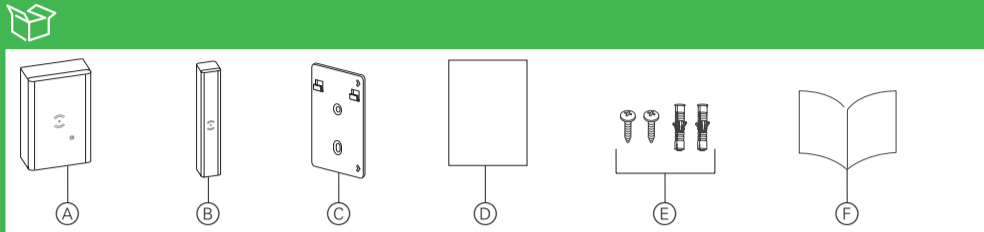
Schneider Electric Danmark A/S, Lautrupvang 1, 2750 Ballerup, Telefon: +45 88 30 20 00, [www.lk.dk](http://www.lk.dk)



550B1023



Wiser



## Prerequisites

Download the **Wiser app** to your smartphone /tablet, and install the **Wiser Gateway** to configure and control Wiser devices.

## Additional system information

Detailed product information is available online in the **system user guide**: Scan the QR code or follow the link.


<https://www1.lk.dk/wiser>

## For your safety

## NOTICE

## RISK OF DAMAGE TO DEVICE

Always operate the product in compliance with the specified technical data.  
Failure to follow these instructions can result in equipment damage.

## Getting to know the product

Wiser wireless door and window sensor (hereinafter referred to as **sensor**) consists of two separate parts: master and slave. The master part includes the sensing circuit which detects the slave part. The slave part is a magnet.

When the sensor is connected to the Wiser Gateway and the window/door is opened or closed, the master part directly reports the change to the Gateway.

When the battery is low (less than 10 %), the status LED blinks orange once per minute, and a message is sent to the Gateway.

## Package contents

- (A) Master part (sensing circuit)
- (B) Slave part (magnet)
- (C) Base plate
- (D) Adhesive pad
- (E) Screws: 2 × ST4.2 × 25 mm with wall plugs
- (F) Installation instructions

## Choosing the installation location

Install the master and slave parts as per the suggested location:

- (G) Correct and incorrect slave part/base plate alignment
- (H) Vertical mounting options
- (I) Horizontal mounting options

## Mounting the sensor

Removing the battery isolation strip



## Mounting

- i** For wood or plastic surfaces, use either the adhesive pad or the mounting screws.
- If using screws, pre-drill a 1 mm hole.
- For metal surfaces, use adhesive pads only.
- To avoid degrading sensor performance, do not install the sensor near magnetic devices.
- With the window/door in the *close* state, the distance between the master part and slave part of the sensor should be <18 mm for a non-metallic base (for example, wood or plastic surfaces) and <10 mm for a metallic base.

## Operating elements

- (J) Status LED
- (K) Base cover screw
- (L) Function key
- (M) Base plate

## Setting the sensor

- i** Remove the master part from the base plate to access the function key (L).

Connecting to the Wiser Gateway



- 1 Short press (< 0,5 s) the function key 3 times. The sensor scans for the available Zigbee network. The status LED turns green if the sensor successfully connects to the Wiser Gateway.
- 2 Follow the instructions in the **Wiser app** to set the sensor parameters through the Wiser Gateway.

Resetting the sensor



Short press (< 0,5 s) the function key 3 times and then long press the function key once for >10 s to reset the sensor to factory default mode.

- i** All configuration data, user data, and network data is deleted.

Replacing the battery



## Behaviour of the status LED

Refer to the system user guide.

## Troubleshooting

Refer to the system user guide.

<b>Battery</b>	3 VDC, CR2450
<b>Battery life</b>	Up to 5 years (may vary based on the usage, frequency of firmware update and environment)
<b>Nominal power</b>	≤90 mW
<b>Operating frequency</b>	2.4 GHz
<b>Max. radio-frequency power transmitted</b>	≤7 dBm
<b>IP rating</b>	IP20
<b>Operating temperature</b>	-10 °C to 50 °C
<b>Relative humidity</b>	10 % to 95 %
<b>Master part dimensions (H × W × D)</b>	50.3 × 33.0 × 16.3 mm
<b>Slave part dimensions (H × W × D)</b>	50 × 9 × 9 mm
<b>EU declaration</b>	1003632-0
<b>Certification</b>	Zigbee 3.0

Dispose of the device separately from household waste at an official collection point. Professional recycling protects people and the environment against potential negative effects.

## Trademarks

- Zigbee® is a registered trademark of the Zigbee Alliance.
  - Apple® and App Store® are brand names or registered trademarks of Apple Inc.
  - Google Play™ Store and Android™ are brand names or registered trademarks of Google Inc.
- Other brands and registered trademarks are properties of their relevant owners.

## EU Declaration of conformity

Hereby, Schneider Electric Danmark A/S, declares that this product is in compliance with the essential requirements and other relevant provisions of RADIO EQUIPMENT DIRECTIVE 2014/53/EU. Declaration of conformity can be downloaded on: [se.com/docs](http://se.com/docs)

## Lauritz Knudsen

Schneider Electric Danmark A/S, Lautrupvang 1, 2750 Ballerup, Phone.: +45 88 30 20 00, [www.lk.dk](http://www.lk.dk)