

LOEVSCHALL

THE GOOD LIGHT

Nikkelvej 11 DK-8940

[DK] Stikkene må ikke klippes af ledningerne.

Produktet skal bruges med en LED Driver certificeret efter standard EN 61347-2-13.

Den eksterne fleksible ledning på denne lampe kan ikke udskiftes.

Hvis ledningen bliver beskadiget skal lampen destrueres.

[GB] The connectors must not be cut from the wires.

The product shall be used with an LED Driver certified with standard EN 61347-2-13.

The external flexible cord of this luminaire cannot be replaced; if the cord is damaged, the luminaire shall be destroyed.

[D] Die Stecker dürfen nicht von den Leitungen geschnitten werden.

Das Produkt muss nur mit eine Norm EN 61347-2-13 zertifizierte LED Netzteile benutzen werden.

Die externe flexible Kabel von dieser Lampe kann nicht ersetzt werden; falls das Kabel beschädigt ist, dann muss die Lampe vernichtet werden.

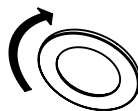
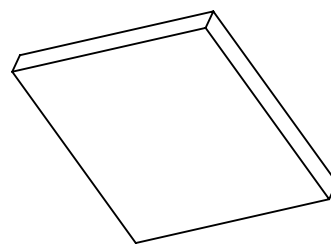


[DK] Besøg Loevschall.dk
for flere monterings muligheder.

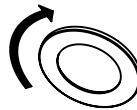
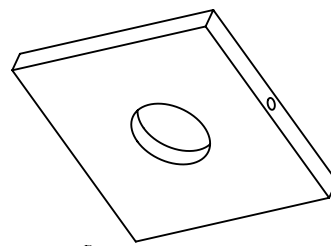
[GB] Please visit Loevschall.dk
for more mounting options.

[D] Besuchen Sie Loevschall.dk
für verschiedene Befestigungsmöglichkeiten.

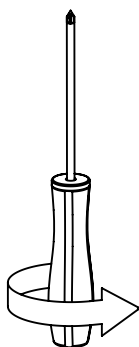
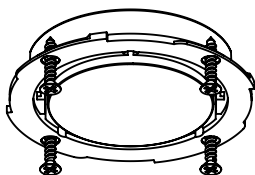
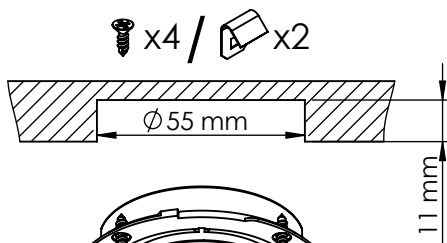
Max. 350 mA / 2.5W LED



IP20



IP44



[DK] Strømmen skal være afbrudt inden
tilslutning og frakobling af spots.

[GB] Power must be disconnected when
connecting or disconnecting spots.

[D] Leistung muss vor dem Anschliessen oder
Trennen der LED-Spots unterbrochen werden.

[EN] Use only with Class 2 power unit.

For under-cabinet mount.

Suitable for damp locations.

[FR] Utiliser uniquement dans un bloc

d'alimentation de classe 2.

Pour sous-meuble monter.

Convient aux emplacements humides.

The light source of this luminaire is not replaceable;
when the light source reaches its end of life the
whole luminaire shall be replaced