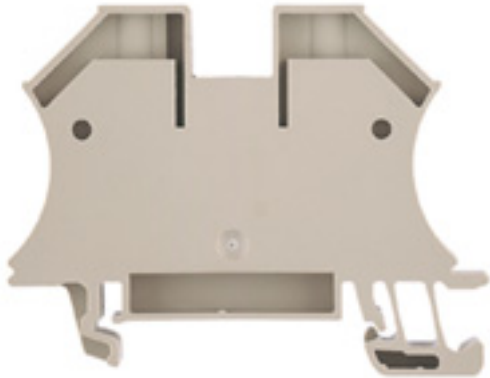


**W-series terminal with clamping yoke connection  
WDU 16N**

Weidmüller Interface GmbH & Co. KG  
Klingenbergstraße 16  
D-32758 Detmold  
Germany  
Fon: +49 5231 14-0  
Fax: +49 5231 14-2083  
www.weidmueller.com



The versatile and extensive range of products - from 0.05 mm<sup>2</sup> to 300 mm<sup>2</sup> - means that you have diverse options for your applications at your disposal.

Hardened steel for mechanical strength and high-quality tinned copper for optimum conductivity. All materials comply with RoHS requirements and have been tested to current environment guidelines.

**General ordering data**

Order No.	<a href="#">1036100000</a>
Type	WDU 16N
Version	W-series terminal with clamping yoke connection, Feed-through terminal, Rated cross-section: 16 mm <sup>2</sup> , Screw connection, Direct mounting
EAN	4008190273217
Qty.	50 pc(s).

**W-series terminal with clamping yoke connection  
WDU 16N**

Weidmüller Interface GmbH & Co. KG  
Klingenbergstraße 16  
D-32758 Detmold  
Germany  
Fon: +49 5231 14-0  
Fax: +49 5231 14-2083  
www.weidmueller.com

**Technical data**

**Dimensions**

Length	60 mm	Width	12 mm
Height	46.5 mm	Height of lowest version	47 mm
Weight	24.85 g		

**Temperatures**

Operating temperature	-50 °C...+120 °C	Storage temperature	
-----------------------	------------------	---------------------	--

**CSA ratings data**

Certificate No. (CSA)	200039-1057876	Voltage size B (CSA)	30 V
Voltage size C (CSA)	300 V	Voltage size D (CSA)	600 V
Current size B (CSA)	10 A	Current size C (CSA)	70 A
Current size D (CSA)	5 A	Wire cross section max. (CSA)	6 AWG
Wire cross section min. (CSA)	14 AWG		

**UL ratings data**

Certificate No. (UR)	E60693VOL1SEC38	Voltage size C (UR)	300 V
Current size C (UR)	70 A	Conductor size Factory wiring max. (UR)	6 AWG
Conductor size Factory wiring min. (UR)	14 AWG	Conductor size Field wiring max. (UR)	6 AWG

**Material data**

Material	Wemid	Colour	beige
Flammability class UL 94	V-0		

**System specifications**

Product family	W-series terminal with clamping yoke connection	Type of connection	Screw connection
Connection direction	on side	Number of levels	1
Number of connections	2	No. of clamping points per level	2
Levels cross-connected internally	No	End cover plate required	No

**2 clampable conductors (H05V/H07V) with equal cross-section (rated connection)**

Conductor cross-section, flexible, 2 clampable conductor, min.	1.5 mm <sup>2</sup>	Conductor cross-section, flexible, 2 clampable conductor, max.	4 mm <sup>2</sup>
Conductor cross-section, flexible plus plastic collar DIN 46228/1, 2 clampable conductor, min.	1.5 mm <sup>2</sup>	Conductor cross-section, flexible plus plastic collar DIN 46228/1, 2 clampable conductor, max.	4 mm <sup>2</sup>

**Additional technical data**

Explosion-tested version	No	Installation advice	Direct mounting
Number of identical terminals	1	Open sides	closed
Type of mounting	Snap-on		

**W-series terminal with clamping yoke connection  
WDU 16N**

Weidmüller Interface GmbH & Co. KG  
Klingenbergstraße 16  
D-32758 Detmold  
Germany  
Fon: +49 5231 14-0  
Fax: +49 5231 14-2083  
www.weidmueller.com

**Technical data**

**Conductors for clamping (rated connection)**

Type of connection	Screw connection	Stripping length	12 mm
Blade size	1.0 x 5.5 mm	Connection direction	on side
Number of connections	2	Clamping range, rated connection, min.	1.5 mm <sup>2</sup>
Clamping range, rated connection, max.	25 mm <sup>2</sup>	Clamping screw	M 4
Tightening torque, min.	1.2 Nm	Tightening torque, max.	2.4 Nm
Torque setting with DMS electric screwdriver 4		Gauge to IEC 60947-1	B7
Conductor cross-section, solid, min.	1.5 mm <sup>2</sup>	Wire connection cross section, solid core max. rated connection	16 mm <sup>2</sup>
Wire connection cross section, stranded, rated connection, min.	1.5 mm <sup>2</sup>	Wire connection cross section, stranded, rated connection, max.	25 mm <sup>2</sup>
Wire connection cross section, finely stranded, max.	16 mm <sup>2</sup>	Conductor cross-section, flexible, min.	1.5 mm <sup>2</sup>
Wire connection cross section, finely stranded with wire-end ferrules DIN 46228/1, rated connection, min.	1.5 mm <sup>2</sup>	Wire connection cross section, finely stranded with wire-end ferrules DIN 46228/1, rated connection, max.	16 mm <sup>2</sup>
Cross-section for connected conductor, finely stranded with wire-end ferrules and plastic collars DIN 46228/4, rated connection, min.	1.5 mm <sup>2</sup>	Wire connection cross-section, finely stranded with wire-end ferrules and plastic collars DIN 46228/4, rated connection, max.	16 mm <sup>2</sup>
Wire connection cross section AWG, min.	AWG 14	Wire connection cross section AWG, max.	AWG 6

**Rating data**

Rated cross-section	16 mm <sup>2</sup>	Rated voltage	690 V
Rated impulse withstand voltage	8 kV	Rated current	76 A
Current at maximum wires	101 A	Standards	IEC 60947-7-1
Pollution severity	3		

**Classifications**

ETIM 2.0	EC000897	ETIM 3.0	EC000897
ETIM 4.0	EC000897	UNSPSC	30-21-18-11
eClass 4.1	27-14-11-20	eClass 5.1	27-14-11-20
eClass 6.0	27-14-11-20		

**Approvals**

Approvals	CE; CSA; GOSTME25; KEMAKEUR; UR
-----------	---------------------------------

**Product notes**

Note, technical data	AWG 6/7 and H07V-R25 with 1.5 Nm tightening torque
Note, accessories	Socket and test plug, see section "W-series accessories"

**Downloads**

STEP	<a href="#">1036100000_21921_WDU_16N_STP.stp</a>
<a href="#">3D model</a>	

**Datasheet**

**W-series terminal with clamping yoke connection  
WDU 16N**

Weidmüller Interface GmbH & Co. KG  
Klingenbergstraße 16  
D-32758 Detmold  
Germany  
Fon: +49 5231 14-0  
Fax: +49 5231 14-2083  
www.weidmueller.com

**Drawings**

