

EW 35

Weidmüller Interface GmbH & Co. KG

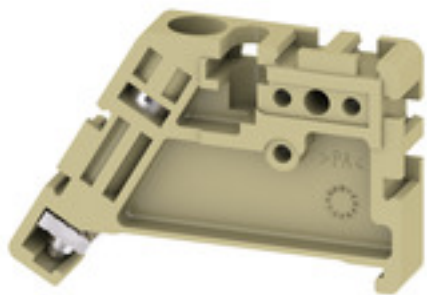
Klingenbergstraße 26

D-32758 Detmold

Germany

www.weidmueller.com

Product image



Weidmüller's range of products includes end brackets that guarantee a permanent, reliable mounting on the terminal rail and prevent sliding. Versions with and without screws are available. The end brackets include marking options, also for group markers, and also a test plug holder.

General ordering data

Version	Accessories, End bracket
Order No.	0383560000
Type	EW 35
GTIN (EAN)	4008190181314
Qty.	50 Stück

EW 35

Weidmüller Interface GmbH & Co. KG
 Klingenbergstraße 26
 D-32758 Detmold
 Germany

www.weidmueller.com

Technische Daten

Dimensions and weights

Depth	27 mm	Depth (inches)	1,063 inch
Height	46 mm	Height (inches)	1,811 inch
Width	8,5 mm	Width (inches)	0,335 inch
Net weight	5,32 g		

Temperatures

Continuous operating temp., min.	-50 °C	Continuous operating temp., max.	100 °C
----------------------------------	--------	----------------------------------	--------

Material data

Material	Wemid	Colour	beige
UL 94 flammability rating	V-2		

System specifications

Version	For the terminals	Rail	TS 35
---------	-------------------	------	-------

Additional technical data

Installation advice	Direct mounting	Interlock	for screw fixing
Type of mounting	when screwed in		

Conductors for clamping (rated connection)

Tightening torque, max.	0,6 Nm	Tightening torque, min.	0,5 Nm
-------------------------	--------	-------------------------	--------

Dimensions

TS 35 offset	22,5 mm
--------------	---------

General

Installation advice	Direct mounting	Rail	TS 35
---------------------	-----------------	------	-------

Classifications

ETIM 6.0	EC001041	ETIM 7.0	EC001041
ETIM 8.0	EC001041	ECLASS 9.0	27-14-11-35
ECLASS 9.1	27-14-11-35	ECLASS 10.0	27-14-11-35
ECLASS 11.0	27-14-11-35	ECLASS 12.0	27-14-11-35

Approvals

ROHS	Conform
------	---------

Downloads

Engineering Data	CAD data – 12723_EW_35_DXF.dxf CAD data – STEP
Engineering Data	EPLAN, WSCAD
User Documentation	StorageConditionsTerminalBlocks
Catalogues	Catalogues in PDF-format
Brochures	

Erstellungs-Datum 15. november 2022 06:56:51 CET

Katalogstand 04.11.2022 / Technische Änderungen vorbehalten