

MASTER UltraEfficient LED bulb

MAS LEDBulbND7.3-100WE27830 A70 CLG UE

This is the most efficient LED bulb from Philips brand. 210lm/W helps to concrete the company statement of sustainability. 50000 hour lifetime helps to extend the replacement cycle to reduce the waste. This is not only the high SPEC product, but also keep the light quality of Philips brand

Product data

General information	
Cap-Base	E27 [E27]
CE mark	Yes
EU RoHS compliant	Yes
Nominal Lifetime (Nom)	50000 h
Switching Cycle	50000X
Flux measurement reference	Sphere
Tier	MASTER

Light technical	
Color Code	830 [CCT of 3000K]
Luminous Flux (Nom)	1535 lm
Color Designation	White (WH)
Correlated Color Temperature (Nom)	3000 K
Luminous Efficacy (rated) (Nom)	210 lm/W
Color Consistency	<6
Color Rendering Index (Nom)	80

LLMF At End Of Nominal Lifetime (Nom) 70 %	
--------------------------------------------	--

Operating and electrical	
Input Frequency	50 to 60 Hz
Power (Nom)	7.3 W
Lamp Current (Nom)	70 mA
Wattage Equivalent	100 W
Starting Time (Nom)	0.5 s
Warm Up Time to 60% Light (Nom)	0.5 s
Power Factor (Nom)	0.4
Voltage (Nom)	220-240 V

Temperature	
T-Case Maximum (Nom)	70 °C

Controls and dimming	
Dimmable	No

MASTER UltraEfficient LED bulb

Mechanical and housing

Bulb Finish	Clear
Bulb Shape	A70 [A 70mm]

Approval and application

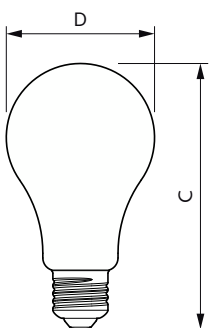
Energy Efficiency Class	A
Energy Consumption kWh/1000 h	8 kWh
EPREL Registration Number	1370031

Product data

Full product code	871951443591900
-------------------	-----------------

Order product name	MAS LEDBulbND7.3-100WE27830 A70 CLG UE
EAN/UPC - Product	8719514435919
Order code	929003480602
Numerator - Quantity Per Pack	1
Numerator - Packs per outer box	10
Material Nr. (12NC)	929003480602
Net Weight (Piece)	0.050 kg

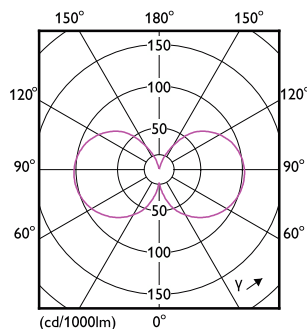
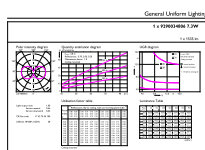
Dimensional drawing



MAS LEDBulbND7.3-100WE27830 A70 CLG UE

Product	D	C
MAS LEDBulbND7.3-100WE27830 A70 CLG UE	70 mm	127 mm

Photometric data

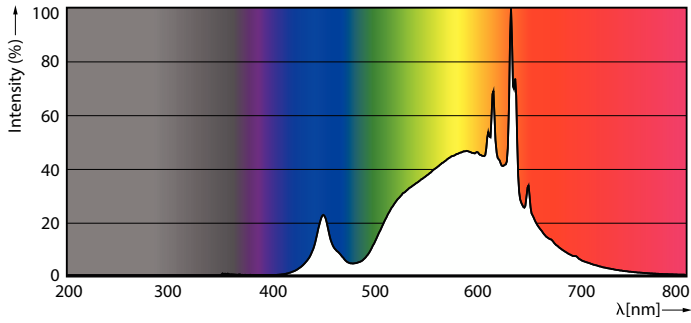


General uniform lighting

Light Distribution Diagram

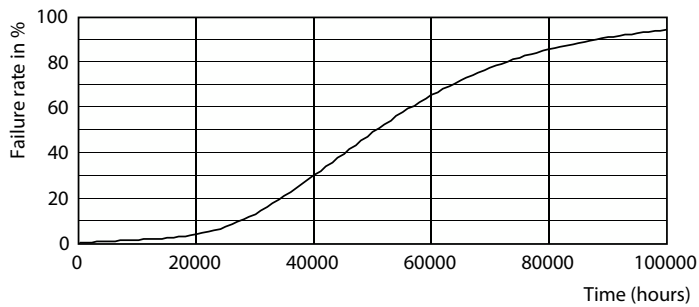
MASTER UltraEfficient LED bulb

Photometric data

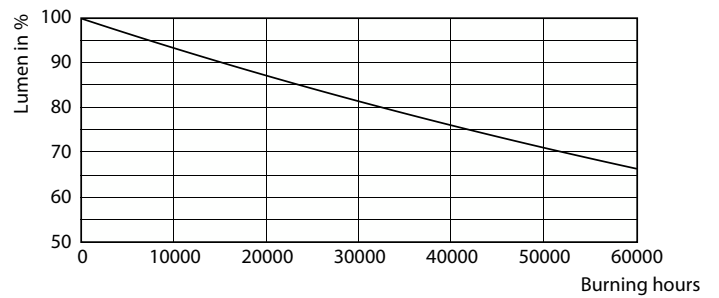


Spectral Power Distribution Colour

Lifetime



Life Expectancy Diagram



Lumen Maintenance Diagram

