



MASTER LEDtube Mains T5



MASTER LEDtube 600mm HE 8W 830 T5 EU

The new Philips Master LEDtube Mains T5 brings simplicity to your lighting project. You don't need to pay attention to the driver technology anymore. Thanks to a unique design, Philips MASTER LEDtube Mains T5 installs in luminaires operating on mains power connection. So simple to operate! . Perfectly safe, reliable & easy to install Philips MASTER LEDtube Mains T5 is the ideal alternative to standard fluorescent tubes to maximize value over lifetime with high energy saving and lower maintenance costs.

Product data

| General information | | LLMF At End Of Nominal Lifetime (Nom) 70 % | |
|------------------------------------|---------------------|--|-------------|
| Cap-Base | G5 [G5] | | |
| CE mark | Yes | | |
| EU RoHS compliant | Yes | | |
| Nominal Lifetime (Nom) | 50000 h | | |
| Switching Cycle | 200000 | | |
| Flux measurement reference | Sphere | | |
| Tier | MASTER | | |
| Light technical | | Operating and electrical | |
| Color Code | 830 [CCT of 3000K] | Input Frequency | 50 to 60 Hz |
| Beam Angle (Nom) | 200 ° | Power (Nom) | 8 W |
| Luminous Flux (Nom) | 1000 lm | Lamp Current (Nom) | 40 mA |
| Color Designation | White (WH) | Starting Time (Nom) | 0.5 s |
| Correlated Color Temperature (Nom) | 3000 K | Warm Up Time to 60% Light (Nom) | 0.5 s |
| Luminous Efficacy (rated) (Nom) | 125.00 lm/W | Power Factor (Nom) | 0.92 |
| Color Consistency | <6 | Voltage (Nom) | 220-240 V |
| Color Rendering Index (Nom) | 80 | | |
| | | Temperature | |
| | | T-Ambient (Max) | 45 °C |
| | | T-Ambient (Min) | -20 °C |
| | | T-Storage (Max) | 65 °C |
| | | T-Storage (Min) | -40 °C |
| | | T-Case Maximum (Nom) | 60 °C |

MASTER LEDtube Mains T5

Controls and dimming

| | |
|----------|----|
| Dimmable | No |
|----------|----|

Mechanical and housing

| | |
|----------------|--------------------|
| Bulb Finish | Frosted |
| Bulb Material | Glass |
| Product Length | 600 mm |
| Bulb Shape | Tube, double-ended |

Approval and application

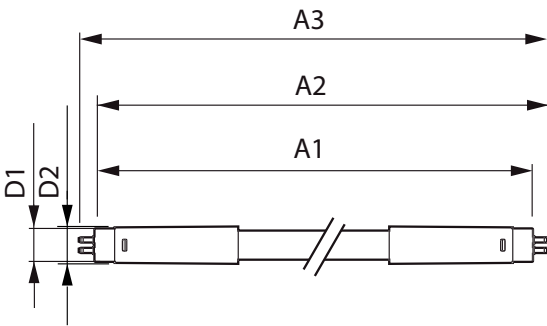
| | |
|-------------------------|--|
| Energy Efficiency Class | E |
| Energy Saving Product | Yes |
| Approval Marks | RoHS compliance CE marking KEMA Keur certificate |

| | |
|-------------------------------|--------|
| Energy Consumption kWh/1000 h | 8 kWh |
| EPREL Registration Number | 467302 |

Product data

| | |
|---------------------------------|--------------------------------------|
| Full product code | 871951433425000 |
| Order product name | MASTER LEDtube 600mm HE 8W 830 T5 EU |
| EAN/UPC - Product | 8719514334250 |
| Order code | 929003044102 |
| Numerator - Quantity Per Pack | 1 |
| Numerator - Packs per outer box | 10 |
| Material Nr. (12NC) | 929003044102 |
| Net Weight (Piece) | 0.232 kg |

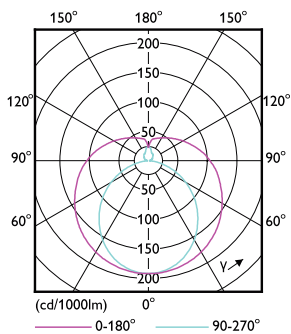
Dimensional drawing



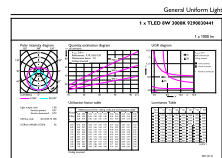
MASTER LEDtube 600mm HE 8W 830 T5 EU

| Product | D1 | D2 | A1 | A2 | A3 |
|--------------------------------------|---------|-------|--------|----------|----------|
| MASTER LEDtube 600mm HE 8W 830 T5 EU | 15.8 mm | 19 mm | 549 mm | 556.1 mm | 563.2 mm |

Photometric data



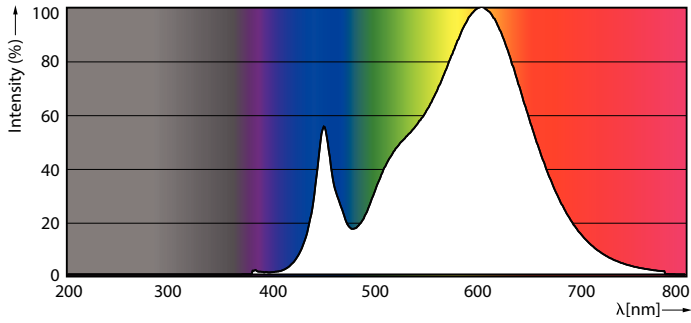
LEDtube MAS 8W G5 1000lm



LEDtube MAS G3 8W G13 1000lm 830-GUL

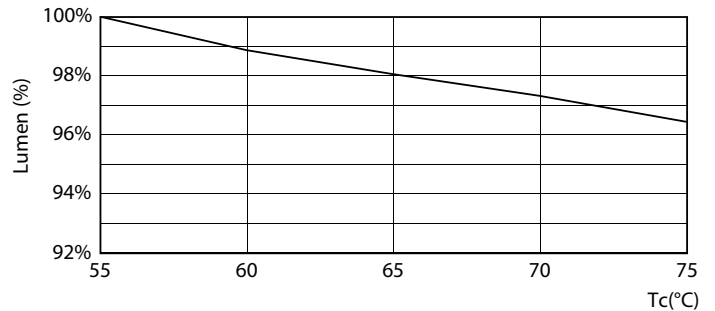
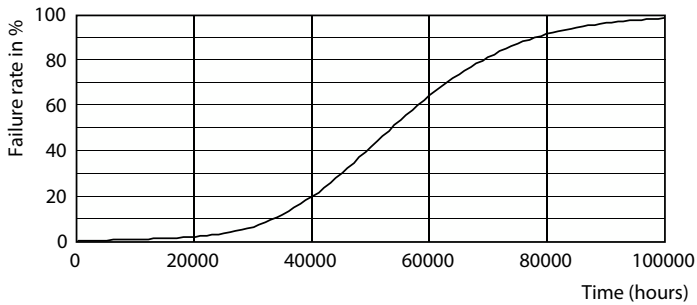
MASTER LEDtube Mains T5

Photometric data

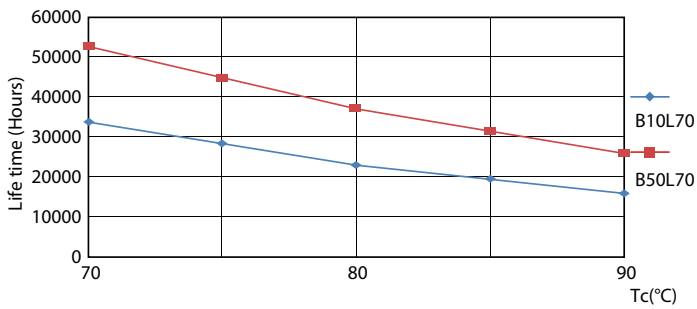


LEDtube MAS G3 8W G13 1000lm 830-POC

Lifetime

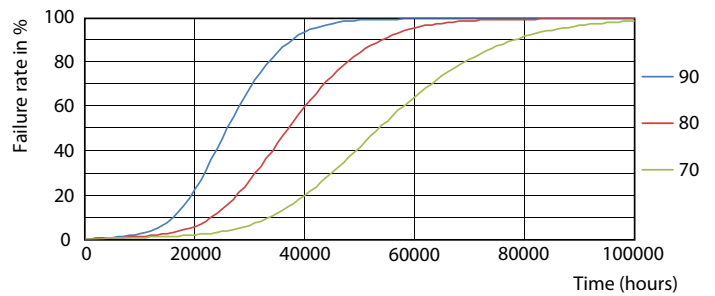


Life Expectancy Diagram



LEDtube MAS 1 26W 50K LifetimeVsTc-LED

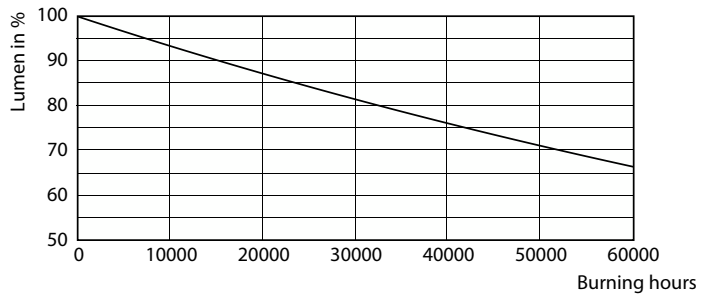
LEDtube MAS G3 8W 50K LumenVsTc-LMP



LEDtube MAS 1 26W 50K FailureRate-LED

MASTER LEDtube Mains T5

Lifetime



Lumen Maintenance Diagram

