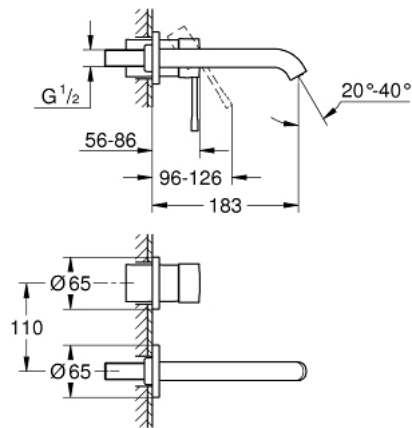
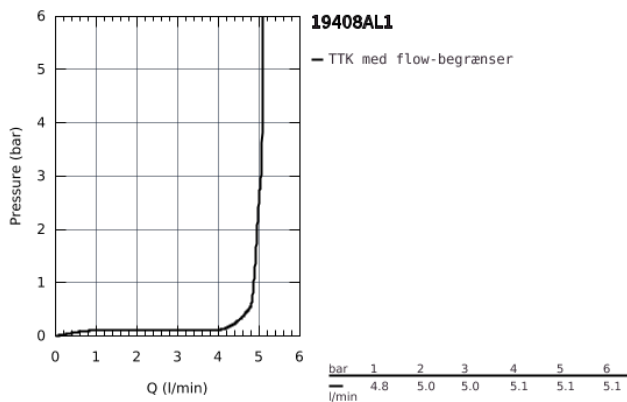


19 408 AL1 ESSENCE 2-HULS HÅNDVASKBATTERI M-SIZE

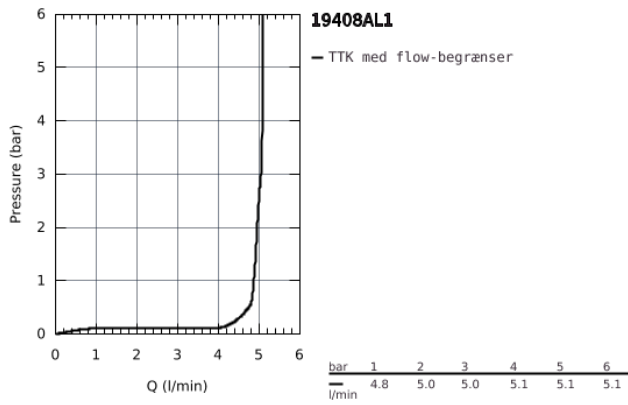


PRODUKTBESKRIVELSE

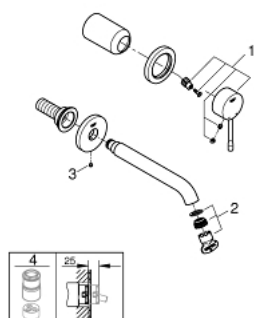
- Farve: Børstet Hard Graphite
- vægmonteret
- Forplade, skal installeres med:
 - 23 571 000
- uden indbygningsdele
- rosette i metal
- metalgreb
- GROHE Long-Life Shine-belægning
- GROHE Water Saving mousseur 5,7 l/min
- GROHE Aquaguide justerbar mousseur
- centerafstand 110 mm
- fremspring 183 mm
- min. tryk 1,0 bar



19 408 AL1 ESSENCE 2-HULS HÅNDVASKBATTERI M-SIZE



19 408 AL1 ESSENCE 2-HULS HÅNDVASKBATTERI M-SIZE



RESERVEDELE , september 2020 – now

1: Greb (Bestillingsnummer 46916AL0)

2: Perlator (Bestillingsnummer 48480000)

3: Skrue (Bestillingsnummer 43094000)

4: Forlænger (Bestillingsnummer 46943000)*

* Valgfrit tilbehør