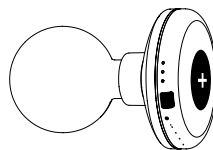
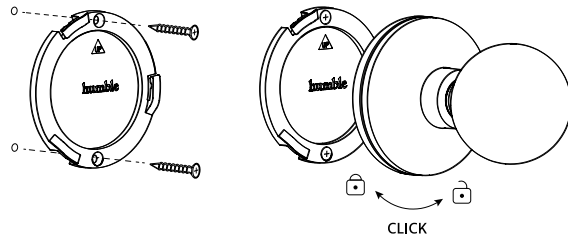


*Bee*

Instruction  
manual

**humble**

Quick start →



#### On first use

Press main power switch

#### Then

short touch - cycle through  
brightness settings  
long touch - off (standby)

#### Charging



USB cable

or



wireless charger

## General information

The Humble Bee is a wireless lamp, available in multiple finishes, with a built-in rechargeable battery. The light source is a replaceable 3V 1W LED filament bulb emitting 2300K (warm white) light. A fully charged lamp remains lit for at least 50 hours (at full brightness), but can last up to 220 hours (at the lowest brightness).

## Read carefully before use!

Do not expose the lamp to excessive heat. The lamp is intended for indoor use, but can be used outdoors occasionally. Check the cable for damage. When the lamp is switched on, do not stare at the light source at full brightness, as this may cause eye damage. The lamp is not a toy: keep away from children.

## Controlling the lamp

On first use, press the main power switch (+) on the bottom to turn the lamp on. You can now use the touch control on the side to cycle between the 3 brightness settings. Long press to turn the light off. Another long press will turn the lamp on at the last used brightness level.

The Humble Bee also operates on the Zigbee 3.0 protocol, making it connectable to most smart home systems that work with a hub/bridge. This lets you operate the lamp by switch, app or motion sensor. Below and at [humblelights.com/smart](https://www.humblelights.com/smart) you will find more information and explanations on how to connect to your specific smart home system.

Connecting to Philips Hue, Ikea Trådfri, Tuya: Make sure the lamp is charged. To activate pairing mode, press the (+) button on the bottom of the lamp for 5 seconds. When the lamp starts pulsating, pairing mode is activated. Follow the instructions in your smart lighting app.

Connecting to Ikea Trådfri via remote (alternative method): To pair with a Trådfri remote the lamp should **not** be in pairing mode. Follow the instructions in the Trådfri app.

## Charging

Charging the lamp with cable: Insert the Type-C USB plug into the slot near the bottom of the lamp. Plug any adapter for a mobile device (with a USB-A output) into the wall socket. Charging will take approximately 3–4 hours depending on the wattage of your adapter.

Charging the lamp wirelessly: Place your Humble on any Qi-standard charging dock or use the Humble Wireless Charger Double – Large. Depending on the wattage of your adapter, charging will take approximately 4–5 hours.

There are 3 indicator lights located next to the Type-C USB slot. While the battery is charging; the lights will flash in order for 10 seconds. LED 1 flashing: battery level is 6%–33%. LED 2 flashing: battery level is 34%–66%. LED 3 flashing: battery level is 67%–95%. If the battery is fully charged, all three LEDs will remain lit. If the battery is almost empty, the last LED light will blink continuously.

When dimming the light the battery indicator lights will automatically turn on for 10 seconds. If the first LED starts blinking, it's time to charge your lamp. If the battery will not charge, contact your Humble dealer.

## Replacing the bulb

The Humble Bee contains a LED filament light bulb that you can replace yourself. Please note that the Humble Bee base only works with low-voltage Humble bulbs. When the light source reaches the end of its life, please replace with an original Humble bulb available at: [www.humblelights.com](https://www.humblelights.com)

## Cleaning the lamp

Clean the lamp carefully with a damp cloth (if necessary with a gentle soap) and dry carefully before turning back on. Do not use any cleaning products that contain chemicals.

## Replacing the battery

The Humble Bee contains a rechargeable battery which can be replaced. If the battery starts to drain very quickly or doesn't charge at all, it likely needs replacement. Please contact your Humble dealer or [info@humblelights.com](mailto:info@humblelights.com) for spare parts and instructions. The old battery must be recycled or disposed separately from household waste.

## Trouble shooting

If the lamp does not work, check its connection with the adapter and check whether the battery is charging. Never attempt to repair the lamp yourself. Please contact your Humble dealer if you encounter any problems.

## CE directive

This product complies with the following IEC/EN standards:  
62133 (Battery), CE (EM55015, EN61547, EN60598)



## WEEE information

This product is subject to the provisions of the WEEE directive 2012/19/EU. Do not dispose of this product together with your household waste. Consult your local waste disposal authority for information on collection points for electrical and electronic waste products.

## Warranty terms

Local and applicable warranty legislation applies to your purchase. Humble cannot accept a claim or warranty in case of: damage or defects caused by use or handling of the product that is inconsistent with standard, personal or home use; repairs of or attempts to repair the product by a third party other than Humble.

## Technical Specifications

Model:	Humble Bee
Materials used:	Aluminum, glass
Light source:	E27 low-voltage bulb
Power:	0,45 W
Colour temperature:	2300 K
Light output:	up to 95 lm (dependant on bulb and setting)
Battery capacity:	8240 mAh / 3.7V
Charging:	USB-C to USB-A (cable) Qi standard (wireless)
Adapter:	5V 2A (= 10W, recommended) 5V 3A (= 15W, max)
Control:	Toggle switch on bottom of base Touch control on the side Smart control (smart mode)
Dimmable:	3 levels (20% - 40% - 100%)
IP rating:	65
Dimensions:	Ø 12 cm x H 18 cm - Ø 4.7 x H 7.1 inch
Total weight:	± 0,5 kg - 1.12 lbs
Total weight incl. packaging:	± 0,7 kg - 1.54 lbs
Smart Home protocol	Zigbee 3.0

## Battery life

Low	165 - 220 hours
Medium	75 - 100 hours
High	38 - 50 hours