

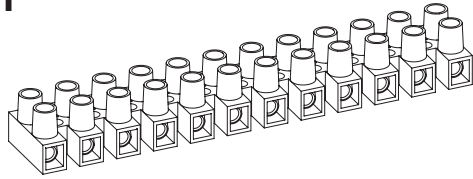
Terminal Blocks

Kopplingsplint
Standard

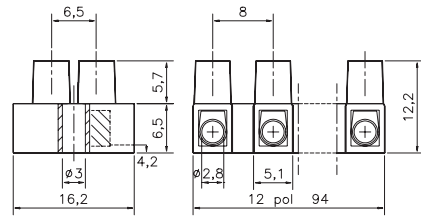
Anschlußklemmen
Morsettiere a Vite

EN 60998-2-1 CE

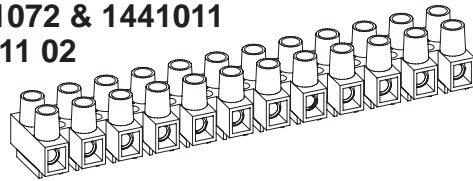
HE1



Description	Poles	Insert	Article No.
HE1 12-poles	12	Std.	0011N1210
HE1 WPR 12-poles	12	WPR	0011W1210
HE1 BA 12-poles	12	BA	0011B1210
HE1 2-poles	2	Std.	0011N0210

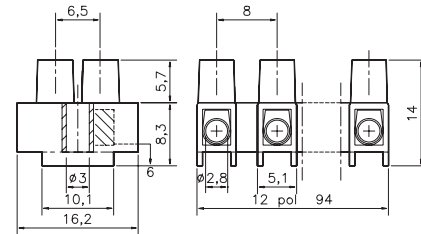
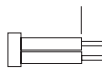


HE1N
1441072 & 1441011
14 411 02

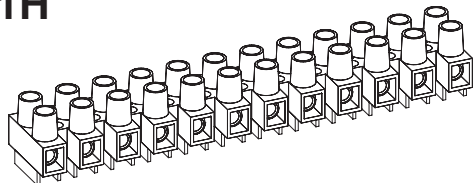


Description	Poles	Insert	Article No.
HE1N 12-poles	12	Std.	0012N1210
HE1N WPR 12-poles	12	WPR	0012W1210
HE1N BA 12-poles	12	BA	0012B1210
HE1N 3-poles	3	Std.	0012N0310
HE1N MS 12-poles	12	Std.	0012N1210MS

Stripping Length
Skalning
Abisolierlänge
4,5 - 5 mm

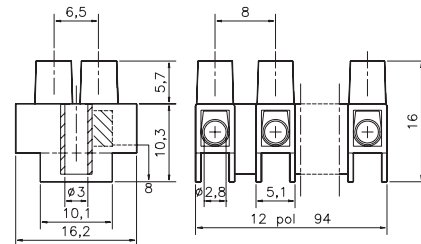


HE1H



Description	Poles	Insert	Article No.
HE1H 12-poles	12	Std.	0013N1210
HE1H WPR 12-poles	12	WPR	0013W1210
HE1H BA 12-poles	12	BA	0013B1210
HE1H WPR 4-poles	4	WPR	0013W0410

Torque:
Recommended 0,35 Nm
Max. 0,4 Nm



TECHNICAL DATA

TEKNISKA DATA

TECHNISCHE ANGABEN

Voltage	Fixing centres	Cable size
Märkspänning	Delningsmätt	Area
Nennspannung	Rastermass	Nennquerschnitt
400 V	8 mm	1 - 2,5 mm²

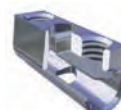
UL HE1 300V / HE1H 600V		
Current	Working temperature	Insulation material
Märkström	Arbetstemperatur	Isolationsmaterial
Nennstrom	Dauertemperatur	Isoliermaterial
6 A / UL 20 A	80° C / 100° C	PA 66/6 V0

Standard
Insert
Inlägg
Klemmkörper

Type BA
Insert Barrier
Inlägg Barriär
Klemmkörper Barriere

Type WPR
Insert Wire protector
Inlägg Trådsydd
Klemmkörper Drahtschutz

HFM
Hot Foil Marking
Märkning
Bezeichnung



The terminal block can be supplied with wire protector WPR or with barrier inserts BA, hot foil marking HFM or Brass Screws MS. Dessa plintar kan levereras med trådsydd WPR eller med barriär inlägg BA, samt Mässingskrav MS och märkning HFM direkt på plinten. Die Klemmen können auf Wunsch mit Drahtschutz WPR, Klemmkörper mit Barriere BA, oder mit Messingschrauben MS und Bezeichnung HFM geliefert werden.

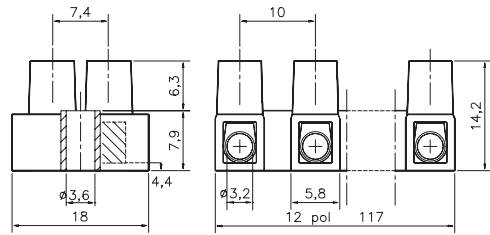
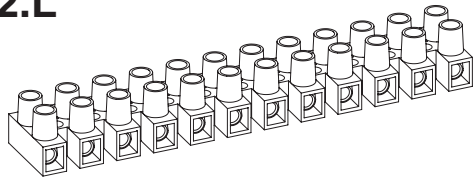
Terminal Blocks

Kopplingsplint
Standard

Anschlußklemmen
Morsettiere a Vite

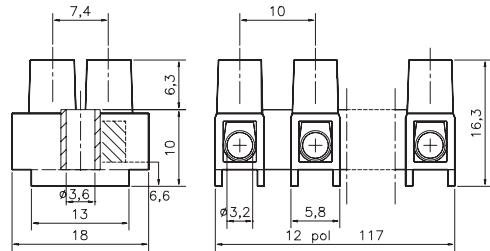
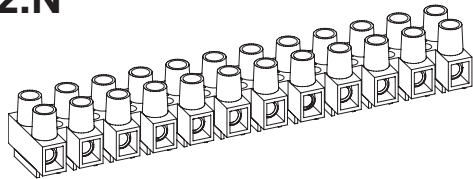
EN 60998-2-1 CE

HE2.L



Description	Poles	Insert	Article No.
HE2.L 12-poles	12	Std.	0021N1210
HE2.L WPR 12-poles	12	WPR	0021W1210
HE2.L BA 12-poles	12	BA	0021B1210
HE2.L 2-poles	2	Std.	0021N0210
HE2.L WPR MS 12-pol	12	WPR	0021W1210MS

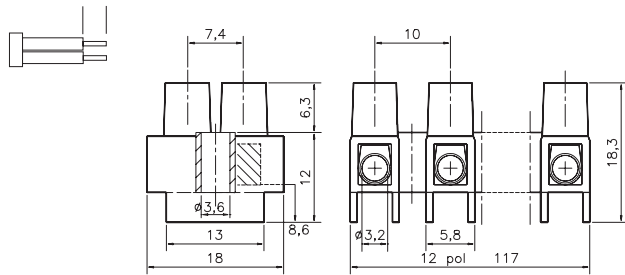
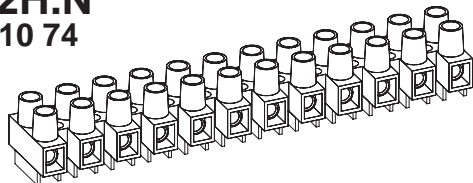
HE2.N



Description	Poles	Insert	Article No.
HE2.N 12-poles	12	Std.	0022N1210
HE2.N WPR 12-poles	12	WPR	0022W1210
HE2.N BA 12-poles	12	BA	0022B1210
HE2.N 3-poles	3	Std.	0022N0310

Stripping Length
Skalning
Abisolierlänge
5 - 6 mm

HE2H.N
14 410 74



Description	Poles	Insert	Article No.
HE2H.N 12-poles	12	Std.	0023N1210
HE2H.N WPR 12-poles	12	WPR	0023W1210
HE2H.N BA 12-poles	12	BA	0023B1210
HE2H.N WPR 4-poles	4	WPR	0023W0410

Torque:
Recommended 0,4 Nm
Max. 0,5 Nm

TECHNICAL DATA

TEKNISKA DATA

TECHNISCHE ANGABEN

Approvals

Godkännanden Genehmigungen

Voltage	Fixing centres	Cable size
Märkspänning	Delningsmätt	Area
Nennspannung	Rastermass	Nennquerschnitt
400 V	10 mm	1,5 - 4 mm²
Current	Working temperature	Insulation material
Märkström	Arbetstemperatur	Isolationsmaterial
Nennstrom	Dauertemperatur	Isoliermaterial
10 A	80° C / 100° C	PA 66/6 V0

Insert	Screw M3
Tinned Brass	Steel bluechromated
Hylsa	Skruv M3
Mässing förtent	Stål blåkromatiserad
Klemmkörper	Schraube M3
Messing verzinkt	Stahl blauchromatier

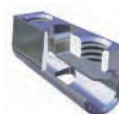
HE2.L	HE2.N	HE2H.N
FI	FI	FI
DEMKO	DEMKO	DEMKO
SEMKO	SEMKO	SEMKO
NEMKO	NEMKO	NEMKO

Standard
Insert
Inlägg
Klemmkörper

Type BA
Insert Barrier
Inlägg Barriär
Klemmkörper Barriere

Type WPR
Insert Wire protector
Inlägg Trådskydd
Klemmkörper Drahtschutz

HFM
Hot Foil Marking
Märkning
Bezeichnung



The terminal block can be supplied with wire protector **WPR** or with barrier inserts **BA**, hot foil marking **HFM** or Brass Screws **MS**. Dessa plintar kan levereras med trådskydd **WPR** eller med barriär inlägg **BA**, samt Mässingskrav **MS** och märkning **HFM** direkt på plinten. Die Klemmen können auf Wunsch mit Drahtschutz **WPR**, Klemmkörper mit Barriere **BA**, oder mit Messingschrauben **MS** und Bezeichnung **HFM** geliefert werden.

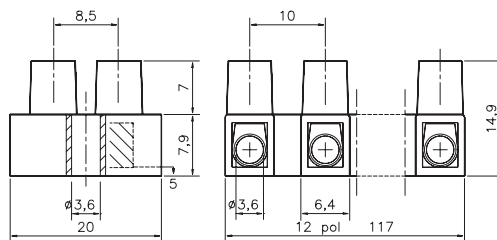
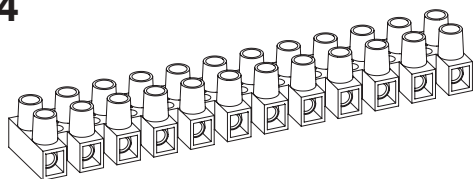
Terminal Blocks

Kopplingsplint
Standard

Anschlußklemmen
Morsettiere a Vite

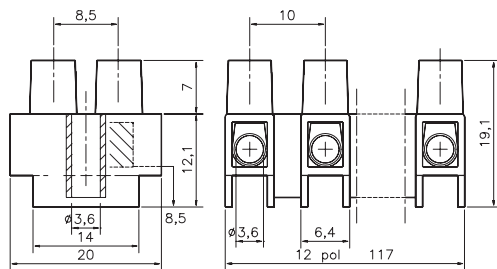
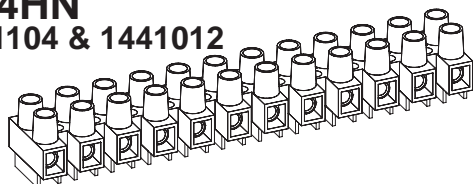
EN 60998-2-1 CE

HE4



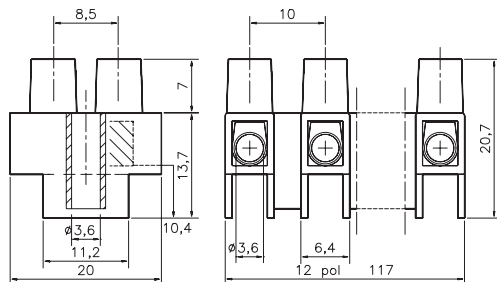
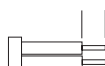
Description	Poles	Insert	Article No.
HE4 12-poles	12	Std.	0041N1210
HE4 WPR 12-poles	12	WPR	0041W1210
HE4 BA 12-poles	12	BA	0041B1210
HE4 2-poles	2	Std.	0041N0210
HE4 WPB 12-poles	12	WPB	0041R1210

HE4HN
1441104 & 1441012

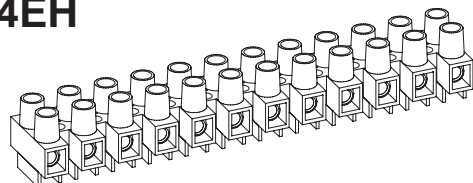


Description	Poles	Insert	Article No.
HE4HN 12-poles	12	Std.	0043N1210
HE4HN WPR 12-poles	12	WPR	0043W1210
HE4HN BA 12-poles	12	BA	0043B1210
HE4HN 3-poles	3	Std.	0043N0310
HE4HN MS 12-poles	12	Std.	0043N1210MS
HE4HN WPB 12-poles	12	WPB	0043R1210

Stripping Length
Skalning
Abisolierlänge
5,8 - 6,3 mm



HE4EH



Torque:
Recommended 0,4 Nm
Max. 0,5 Nm

Description	Poles	Insert	Article No.
HE4EH 12-poles	12	Std.	0044N1210
HE4HH WPR 12-poles	12	WPR	0044W1210
HE4EH BA 12-poles	12	BA	0044B1210
HE4EH WPR 4-poles	4	WPR	0044W0410
HE4EH WPB 12-poles	12	WPB	0044R1210

TECHNICAL DATA

TEKNISKA DATA

TECHNISCHE ANGABEN

Approvals	Godkännanden	Genehmigungen					
Voltage	Fixing centres	Cable size	Insert	Screw M3	HE4	HE4HN	HE4EH
Märkspänning	Delningsmått	Area	Tinned Brass	Steel bluechromated	SEMKO	SEMKO	SEMKO
Nennspannung	Rastermass	Nennquerschnitt	Hylsa	Skruv M3	FI	FI	FI
400 - 500 V	10 mm	2,5 - 4 mm ²					
UL HE4 300V / HE4HN+EH 600V			Mässing förtent	Stål blåkromatiserad	DEMKO	DEMKO	DEMKO
Current	Working temperature	Insulation material	Klemmkörper	Schraube M3	NEMKO	NEMKO	NEMKO
Märkström	Arbetstemperatur	Isolationsmaterial	Messing verzinkt	Stahl blauchromatieret			
Nennstrom	Dauerstemperatur	Isoliermaterial	AWG		UL	UL	
10 A / UL 30A	80° C / 100° C	PA 66/6 V0	24-10		Canada	Canada	

Standard
Insert
Inlägg
Klemmkörper

Type BA
Insert Barrier
Inlägg Barriär
Klemmkörper Barriere

Type WPR
Insert Wire protector
Inlägg Trådskydd
Klemmkörper Drahtschutz

Type WPB
Insert Barrier Wire Protector
Inlägg Trådskydd Barriär
Klemmkörper Drahtschutz Barriere

HFM
Hot Foil Marking
Märkning
Bezeichnung



The terminal block can be supplied with wire protector **WPR**, barrier inserts **BA** or with Barrier Wire Protector **WPB**, hot foil marking **HFM** or Brass Screws **MS**. Dessa plintar kan levereras med trådskydd **WPR**, barriär inlägg **BA** eller med Barriär Trådskydd **WPB**, samt Mässingskrav **MS** och märkning **HFM** direkt på plinten. Die Klemmen können auf Wunsch mit Drahtschutz **WPR**, Barriere **BA** oder Klemmkörper mit Barriere Drahtschutz **WPB** mit Messingschrauben **MS** und Bezeichnung **HFM** geliefert werden.

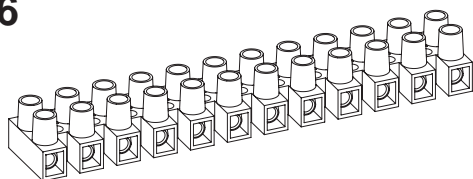
**Terminal Blocks
Klemrækker**

**Kopplingsplint
Standard**

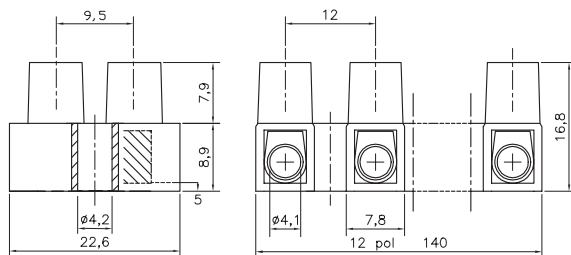
**Anschlußklemmen
Morsettiere a Vite**

EN 60998-2-1 CE

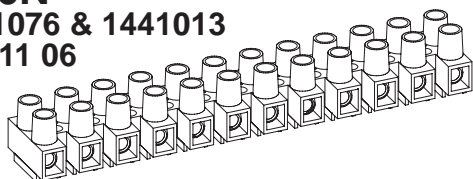
HE6



Description	Poles	Insert	Article No.
HE6 12-poles	12	Std.	0061N1210
HE6 WPR 12-poles	12	WPR	0061W1210
HE6 WPB 12-poles	12	WPB	0061R1210
HE6 2-poles	2	Std.	0061N0210

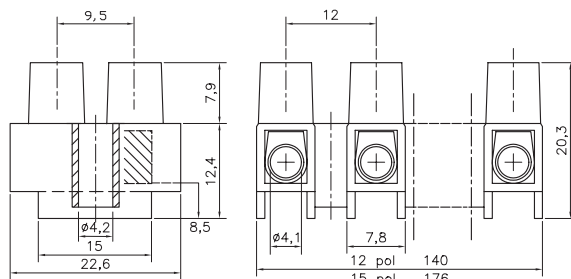


**HE6N
1441076 & 1441013
14 411 06**

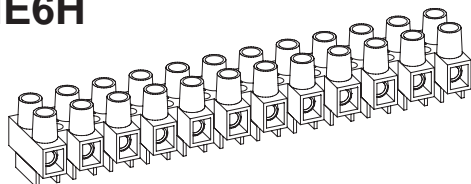


Description	Poles	Insert	Article No.
HE6N 12-poles	12	Std.	0063N1210
HE6N WPR 12-poles	12	WPR	0063W1210
HE6N BA 12-poles	12	BA	0063B1210
HE6N 3-poles	3	Std.	0063N0310
HE6N MS 12-poles	12	Std.	0063N1210MS

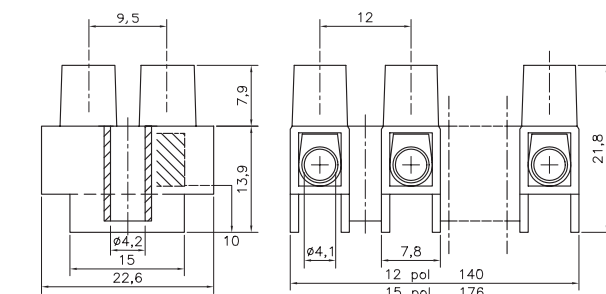
Stripping Length
Skalning
Abisolierlänge
7 - 7,5 mm



HE6H



Description	Poles	Insert	Article No.
HE6H 12-poles	12	Std.	0064N1210
HE6H WPR 12-poles	12	WPR	0064W1210
HE6H BA 12-poles	12	BA	0064B1210
HE6H WPB 4-poles	4	WPB	0064R0410



Torque:
Recommended 0,55 Nm
Max. 0,8 Nm

TECHNICAL DATA TEKNISKA DATA TECHNISCHE ANGABEN

Voltage	Fixing centres	Cable size	Insert	Screw M3,5	Approvals	Godkännanden	Genehmigungen
Märkspänning	Delningsmått	Area	Tinned Brass	Steel bluechromated	HE6	HE6N	HE6H
Nennspannung	Rastermass	Nennquerschnitt	Hylsa	Skruv M3,5	SEMKO	SEMKO	SEMKO

400 - 500 V	12 mm	4 - 6 mm²
--------------------	--------------	-----------------------------

UL HE6 300V / HE6H 600V			Mässing förtent	Stål blåkromatiserad	NEMKO	NEMKO	NEMKO
Current	Working temperature	Insulation material	Klemmkörper	Schraube M3,5	DEMKO	DEMKO	DEMKO
Märkström	Arbetstemperatur	Isolationsmaterial	Messing verzinkt	Stahl blauchromatier			
Nennstrom	Dauertemperatur	Isoliermaterial	AWG		UL	UL	UL

16 A/UL 30/40A	80° C / 100° C	PA 66/6 V0	20-8/20-10
-----------------------	-----------------------	-------------------	-------------------

Standard	Type BA	Type WPR	Type WPB	HFM
Insert	Insert Barrier	Insert Wire protector	Insert Barrier Wire Protector	Hot Foil Marking
Inlägg	Inlägg Barriär	Inlägg Trådskydd	Inlägg Trådskydd Barriär	Märkning
Klemmkörper	Klemmkörper Barriere	Klemmkörper Drahtschutz	Klemmkörper Drahtschutz Barriere	Bezeichnung



The terminal block can be supplied with wire protector **WPR**, barrier inserts **BA** or with Barrier Wire Protector **WPB**, hot foil marking **HFM** or Brass Screws **MS**. Dessa plintar kan levereras med trådskydd **WPR**, barriär inlägg **BA** eller med Barriär Trådskydd **WPB**, samt Mässingskrav **MS** och märkning **HFM** direkt på plinten. Die Klemmen können auf Wunsch mit Drahtschutz **WPR**, Barriere **BA** oder Klemmkörper mit Barriere Drahtschutz **WPB** mit Messingschrauben **MS** und Bezeichnung **HFM** geliefert werden.

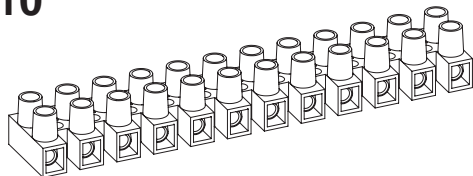
Terminal Blocks

 Kopplingsplint
Standard

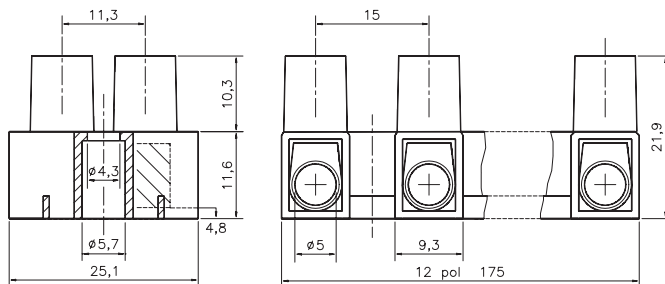
 Anschlußklemmen
Morsettiere a Vite

EN 60998-2-1 CE

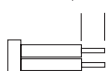
HE10



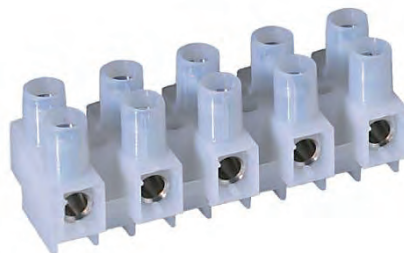
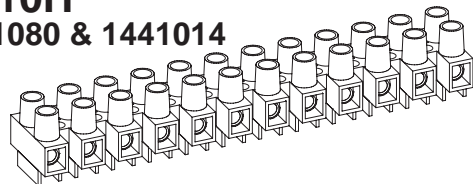
Description	Poles	Insert	Article No.
HE10 12-poles	12	Std.	0101N1210
HE10 WPR 12-poles	12	WPR	0101W1210
HE10 BA 12-poles	12	BA	0101B1210
HE10 2-poles	2	Std.	0101N0210



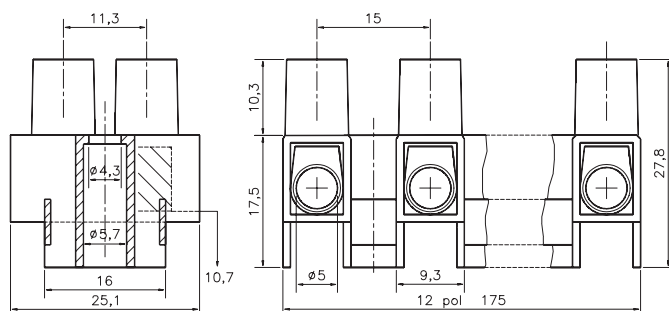
Stripping Length
Skalning
Abisolierlänge
7,6 - 9 mm



Torque:
Recommended 0,84 Nm
Max. 1,2 Nm


 HE10H
1441080 & 1441014


Description	Poles	Insert	Article No.
HE10H 12-poles	12	Std.	0103N1210
HE10H WPR 12-poles	12	WPR	0103W1210
HE10H BA 12-poles	12	BA	0103B1210
HE10H WPR 4-poles	4	WPR	0103W0410
HE10H MS 12-poles	12	Std.	0103N1210MS



TECHNICAL DATA

TEKNISKA DATA

TECHNISCHE ANGABEN

Approvals

Godkännanden

Genehmigungen

Voltage	Fixing centres	Cable size
Märkspänning	Delningsmätt	Area
Nennspannung	Rastermass	Nennquerschnitt
400 - 500 V	15 mm	6 - 10 mm²

Current	Working temperature	Insulation material
Märkström	Arbetstemperatur	Isolationsmaterial
Nennstrom	Dauertemperatur	Isoliermaterial
25 A / UL 50 A	80° C / 100° C	PA 66/6 V0

Insert	Screw M4
Tinned Brass	Steel bluechromated
Hylsa	Skruv M4

HE10	HE10H
NEMKO	NEMKO
FI	FI

Mässing förtent	Stål blåkromatiserad
Klemmkörper	Schraube M4
Messing verzinkt	Stahl blauchromatiert

SEMKO	SEMKO
DEMKO	DEMKO

18-6/18-8

UL	UL
Canada	Canada

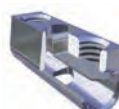


Standard
Insert
Inlägg
Klemmkörper

Type BA
Insert Barrier
Inlägg Barriär
Klemmkörper Barriere

Type WPR
Insert Wire protector
Inlägg Trådskydd
Klemmkörper Drahtschutz

HFM
Hot Foil Marking
Märkning
Bezeichnung



The terminal block can be supplied with wire protector **WPR** or with barrier inserts **BA**, hot foil marking **HFM** or Brass Screws **MS**. Dessa plintar kan levereras med trådskydd **WPR** eller med barriär inlägg **BA**, samt Mässingskrav **MS** och märkning **HFM** direkt på plinten. Die Klemmen können auf Wunsch mit Drahtschutz **WPR**, Klemmkörper mit Barriere **BA**, oder mit Messingschrauben **MS** und Bezeichnung **HFM** geliefert werden.

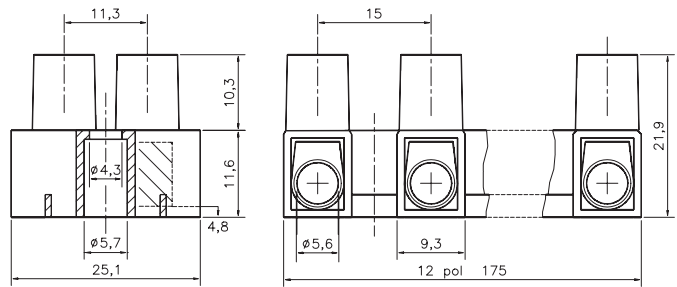
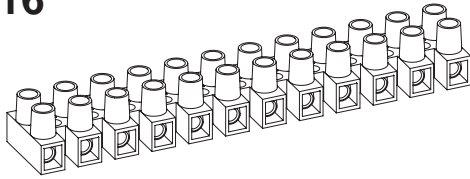
Terminal Blocks

Kopplingsplint
Standard

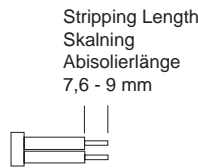
Anschlußklemmen
Morsettiere a Vite

EN 60998-2-1 CE

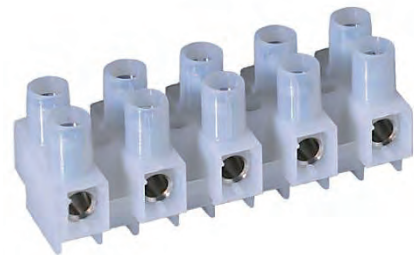
HE16



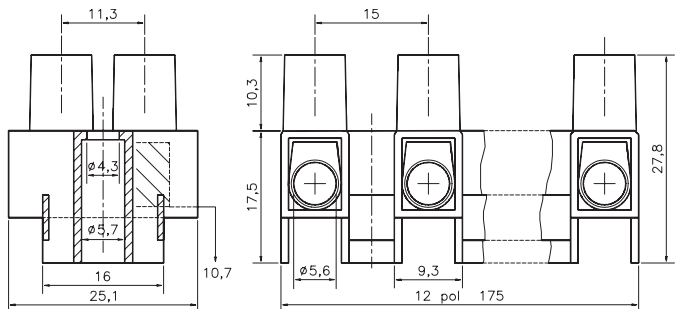
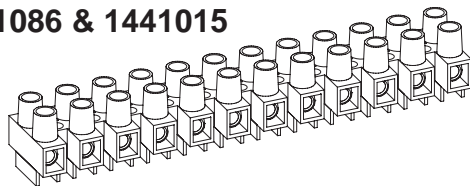
Description	Poles	Insert	Article No.
HE16 12-poles	12	Std.	0161N1210
HE16 WPR 12-poles	12	WPR	0161W1210
HE16 BA 12-poles	12	BA	0161B1210
HE16 2-poles	2	Std.	0161N0210



Torque:
Recommended 1,4 Nm
Max. 2,0 Nm



HE16H
1441086 & 1441015



Description	Poles	Insert	Article No.
HE16H 12-poles	12	Std.	0163N1210
HE16H WPR 12-poles	12	WPR	0163W1210
HE16H BA 12-poles	12	BA	0163B1210
HE16H WPR 4-poles	4	WPR	0163W0410
HE16H MS 12-poles	12	Std.	0163N1210MS

TECHNICAL DATA

TEKNISKA DATA

TECHNISCHE ANGABEN

Approvals

Godkännanden

Genehmigungen

Voltage	Fixing centres	Cable size
Märkspänning	Delningsmått	Area
Nennspannung	Rastermass	Nennquerschnitt
400 - 500 V	15 mm	10 - 16 mm²

UL HE16 300V / HE16H 600V		
Current	Working temperature	Insulation material
Märkström	Arbetstemperatur	Isolationsmaterial
Nennstrom	Dauertemperatur	Isoliermaterial
35/ UL 63 A	80° C / 100° C	PA 66/6 V0

Insert
Tinned Brass
Hylsa

Screw M5
Steel bluechromated
Skruv M5

HE16
NEMKO
DEMKO

HE16H
NEMKO
FI

Mässing förtent
Klemmkörper
Messing verzinkt
AWG

Stål blåkromatiserad
Schraube M5
Stahl blauchromatiert

FI
SEMKO
UL
Canada



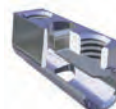
VDE
SEMKO
UL
Canada

Standard
Insert
Inlägg
Klemmkörper

Type BA
Insert Barrier
Inlägg Barriär
Klemmkörper Barriere

Type WPR
Insert Wire protector
Inlägg Trädskydd
Klemmkörper Drahtschutz

HFM
Hot Foil Marking
Märkning
Bezeichnung



The terminal block can be supplied with wire protector **WPR** or with barrier inserts **BA**, hot foil marking **HFM** or Brass Screws **MS**.
Dessa plintar kan levereras med trädskydd **WPR** eller med barriär inlägg **BA**, samt Mässingskrav **MS** och märkning **HFM** direkt på plinten.
Die Klemmen können auf Wunsch mit Drahtschutz **WPR**, Klemmkörper mit Barriere **BA**, oder mit Messingschrauben **MS** und Bezeichnung **HFM** geliefert werden.