

Please follow the fixing and care instructions to ensure your product is fitted safely and retains its high quality finish.

**This instruction leaflet applies to the following products:**

AD107041 Wireline Shower Curtain Cable

**Fixing Pack Contents**

- (A) Fixing screws x 2
- (B) Wall plugs x 2
- (C) Hex head key x 1
- (D) Spare collets x 2

**Tools Required**

Drill; 8mm masonry drill bit (8mm ceramic drill bit optional); Cross-head screwdriver; Pencil; Spirit level; Sharp Wire Cutters; Hex Head Key (Supplied)

**KEEP DIY TOOLS OUT OF THE REACH OF CHILDREN**

**Home Safety Advice**

Always take care when using an electric drill, particularly in the bathroom. Always check for hidden cables and pipework before drilling and take extreme care if there is any water in the working area. It is advisable to use a residual current circuit breaker (RCCB).

Always wear suitable eye protection when drilling.

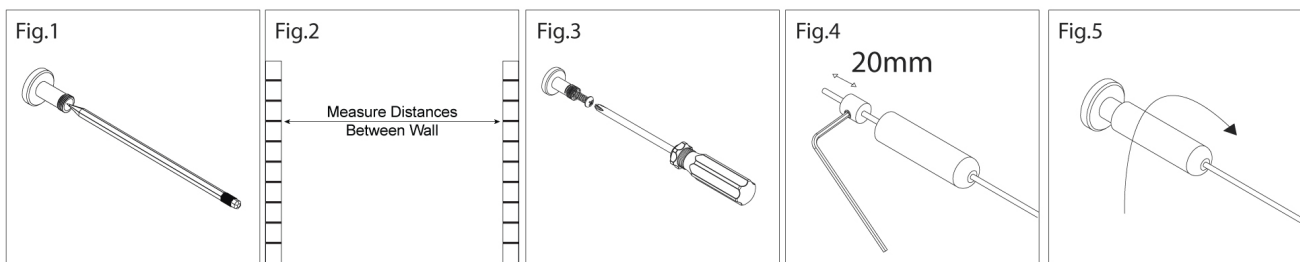
If the product is to be fitted on a ceramic tiled wall, a ceramic drill bit should be used. Always ensure that the drill hole passes through the central tiled area rather than through the grouted area. To prevent damage to the tile, mask the area around the hole with tape before drilling.

**Note: The wall plugs supplied are for use on solid walls only. For cavity walls or plasterboard use specialist fixings that are available from all good DIY stores.**

**Fixing Instructions**

1. Select the desired position of the Wireline and mark the centres of the mounting holes using the wall brackets as a template. Remember to allow for the drop of the curtain hooks and sufficient curtain overlap into the bath or shower tray. (See fig 1). Check the bracket positions are level.
2. The Wireline is supplied as a 3m length and can be cut to the required size using a sharp pair of pliers or cable cutters. Firstly measure the gap between the fixing surfaces then carefully cut the wire 60mm shorter than the measured distance between the fixing surfaces (See fig 2). Ensure the end of the wire is cut square and the cut edge is not frayed. Care should be taken when cutting the cable and handling the cut end. Do not cut the cable if under tension.
3. Using an 8mm masonry drill, drill the holes in the marked positions to a depth of 40mm. If drilling through tiles, please pre-drill using a ceramic drill bit.
4. Insert the wall plugs to the surface of the wall. If fitting to a tiled surface, the wall plugs should be inserted below the surface of the tile to avoid cracking.

5. Screw the wall brackets to the wall. (See Fig.3)
6. Thread one end of the wire through the small hole at the domed end of the wall bracket cover and through the hole in the collet. Tighten the collet using the hex head key, approximately 20mm from the end of the wire. (See Fig.4)
7. Thread the wall bracket cover onto one of the wall brackets and rotate clockwise until the screw threads are covered. (See Fig.5)
8. Repeat the assembly process for the opposite end of the wire, adjusting the position of the collet to cater for the stretch of the wire if required.
9. Rotate the wall bracket covers until a suitable wire tautness is achieved, **but do not over tighten**. Alternate the rotation of the wall bracket covers to obtain a consistent gap between wall bracket and cover. (See Fig.5)
10. It may be necessary to adjust the positions of the collets if the wire cannot be adequately tightened. If adjustment is required, repeat assembly procedures 8 and 9.
11. Clip the curtain hooks onto the Wireline and hang your curtain.



### Product Care Advice

To retain the best quality finish, clean product regularly with a soft damp cloth. Do not use abrasive or chemical cleaners, as these will damage the product.

**Please retain this leaflet for future reference.**

Croydex Ltd, Central Way, Andover, Hants, SP105AW, UK  
 Tel: +44 (0) 1264 365881 ~ Fax: +44 (0) 1264 356437  
 website: [www.croydex.com](http://www.croydex.com) ~ Email: [info@croydex.co.uk](mailto:info@croydex.co.uk)