



www.klauke.com

K 06 / K 06D / K 06BC / K 06C25 / K 06DC25
K 09 / K 09D / K 09BC



Serialnumber

WE.3183_E © 02/2017 R&D-2

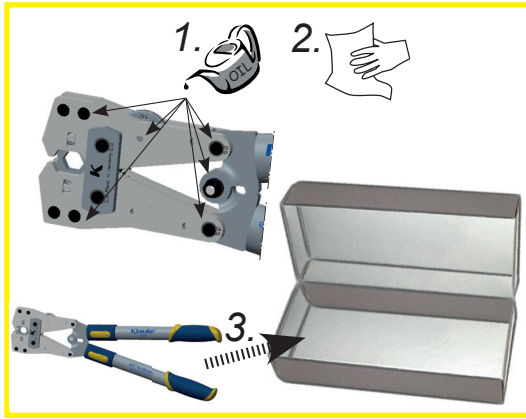
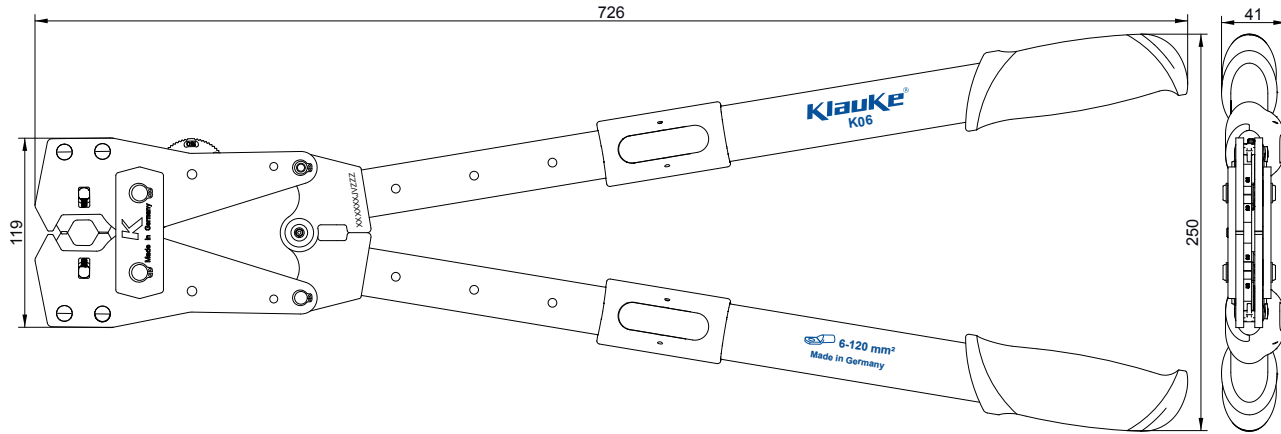
Gustav Klauke GmbH • Auf dem Knapp 46 • D-42855 Remscheid • Telefon +49 2191 907 0 • www.klauke.com

Klauke


EMERSON

K 06 / K 06D / K 06BC / K 06C25 / K 06DC25
K 09 / K 09D / K 09BC

Klauke



Klauke ASC
 Authorised Service Center

Standard blue connection

DIN

KLAUKE ONLY www.klauke.com
 ++49 +2191-9070

BEFORE WORK

DIN EN 50110

WORK



SERVICE



DON'T DO



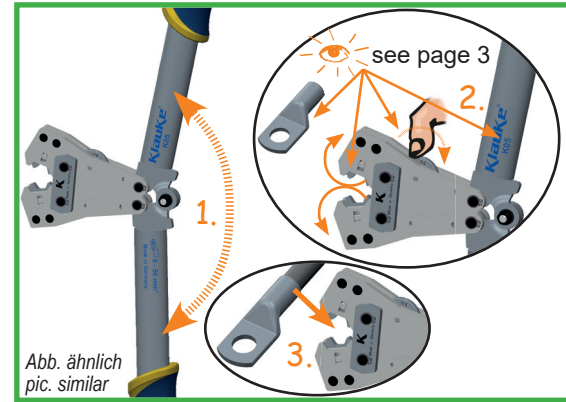
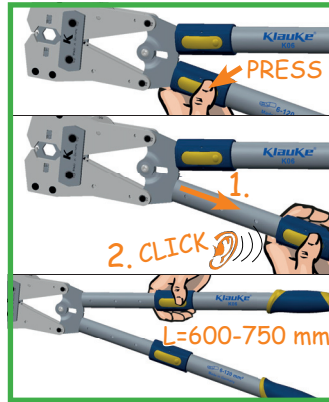
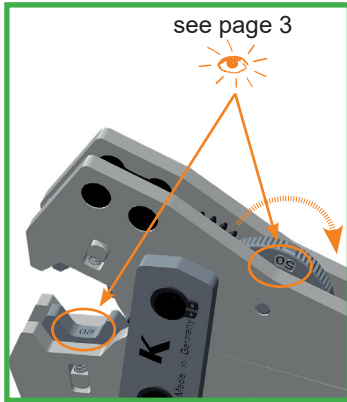


Abb. ähnlich
pic. similar

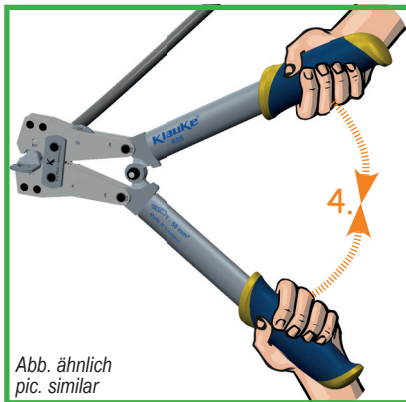


Abb. ähnlich
pic. similar

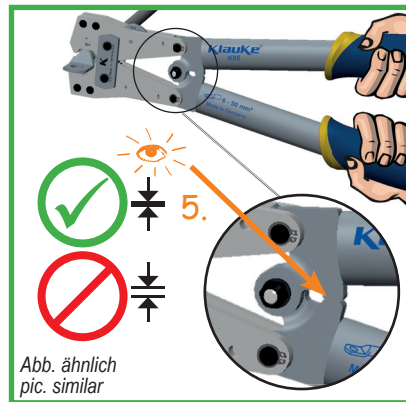


Abb. ähnlich
pic. similar

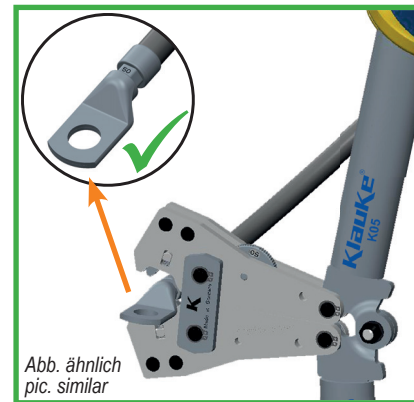





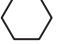

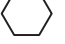



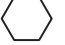

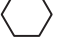


Abb. ähnlich
pic. similar

Art.-Nr. #	 mm	 kg	geeignet für suitable for	Verb.material Connection material	Pressform Crimping mold	Kennzeichnung/Marking		Pressbereich Crimping range mm ²
						außen outside	Pressprofil Profile	
K 06	600 - 750	2,6	Rohrkabelsch. und Verb. „Normalausf.“ Tub. cable lugs and connect. „standard type“			Querschnitt Section	Querschnitt Section	6 - 120
K 09								25 - 150
K 06BC	600 - 750	2,6	Rohrkabelschuhe und Verbinder „blue connection“ Tubular cable lugs and connectors „blue connection“			Querschnitt Section	Querschnitt Section	6 - 120
K 09BC								25 - 150
K 06D	600 - 750	2,6	Presskabelschuhe (DIN 46235) und Verbinder (DIN 46267, Teil 1) nach DIN - Cu Copper compression cable lugs (DIN 46235) and connect. (DIN 46267, part 1) acc. to DIN			Querschnitt Section	Kennzahl Code	6 - 120
K 09D								25 - 150
K 06C25 / K 06DC25	600 - 750	2,6	Abzweigklemmen C-Form C-clamps				Querschnitt Section	25
K06C25			Rohrkabelsch. und Verb. „Normalausf.“ Tub. cable lugs and connect. „standard type“			Querschnitt Section	Querschnitt Section	6 - 95
K 06DC25			Presskabelsch. (DIN 46235) und Verb. (DIN 46267, Teil 1) nach DIN - Cu Copper compr. cable lugs (DIN 46235) and connect. (DIN 46267, part 1) acc. to DIN			Querschnitt Section	Kennzahl Code	6 - 95

