

LEM021DF

DIN Rail Three Phase Four Wire Electronic Energy Meter

Application

Model LEM021DF electronic DIN rail active energy meter is a kind of new style three phase four wire active energy meter, it adopt micro-electronics technique, and imported large scale integrate circuit, use advanced technique of digital and SMT techniques, etc. The meter completely accord with relevant technical requirements of class 1 three phase active energy meter stipulated in international standard IEC 62053-21. It can accurate and directly measure 50Hz or 60Hz active energy consumption from three phase AC electricity net, it can display total energy consumption by step type impulse register. it has following features: good reliability, small volume, light weight, specious nice appearance, convenient installation, etc.

Functions and features

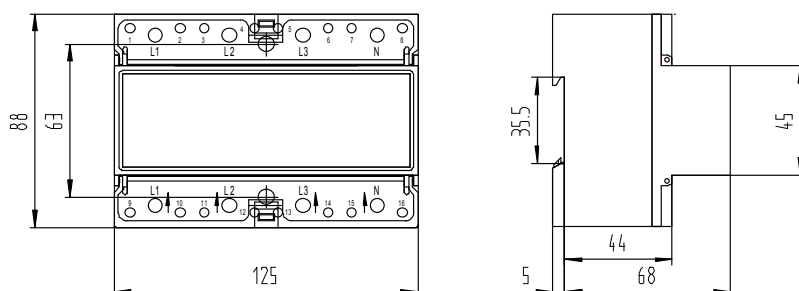
- ☑ 35mm standard DIN rail installation, complying with standard DIN EN50022. Or front board setting (mounting holes center distance 63 mm), users can choose any one by themselves.
- ☑ Six pole width (Modulus 12.5mm), complying with standard JB/T7121-1993.
- ☑ Six digits display (999999kWh) by step motor and pulse machinery counter.
- ☑ There are a polarity port of pulse output passive test and a nonpolarity port of pulse output passive remote, the output rate is 10 imp/kWh. And contact with all kind of AMR system conveniently. Complying with standard IEC 62053-31 and DIN 43864.
- ☑ Five LED instructions respectively every power supply state and signal of closed energy impulse and distant energy impulse.
- ☑ Automatic detection the direction of the flow of load current. And instructions (signal of closed energy impulse is green when working, that is meaning the direction of the flow of load current reverse).
- ☑ Single direction three components measure three phase four wire active energy consumption. It is nothing with direction of the flow of load current. Complying with standard IEC 62053-21.
- ☑ Directly connect operation, type S wiring.
- ☑ The short terminal cover is made with the transparent PC, to reduce the installation space and is convenient for centralized installation.

Technical parameters

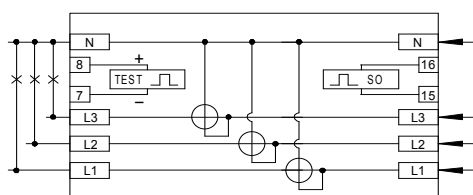
Model	Accuracy	Reference Voltage(V)	Current specifications(A)	Starting current(A)	Insulation performance
LEM021DF	Class 1	3×127/220	5(30)	0.02	AC voltage 4kv for 1 minute,
		3×230/400	10(60)	0.04	1.2/50us waveform impulse
			20(120)	0.08	voltage 6kv

* If any reference voltage and current you need are different from above, please contact our salesmen.

Outer and mount dimension



Wiring diagram (Type S)



(Inlet from bottom, outlet from top)

Terminals	Note
L1	L1 Phase line
L2	L2 Phase line
L3	L3 Phase line
N	Neutral line
7 and 8	Test energy impulse output port
15 and 16	remote energy impulse output port

