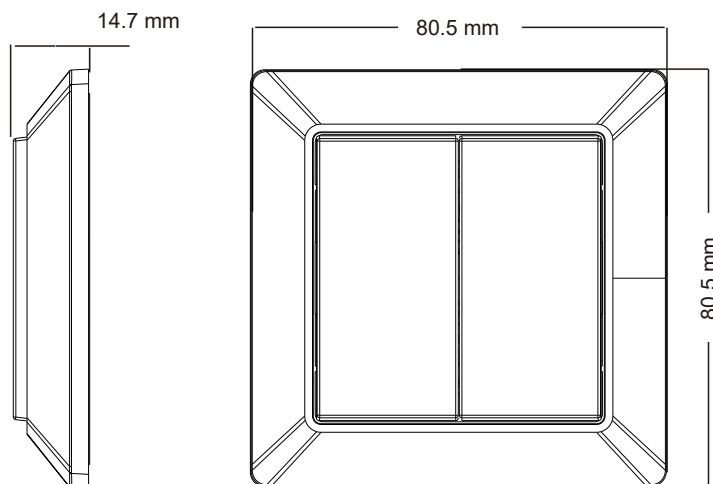


**Important:** Read all instructions before installation. If the product is to be installed in connection with 210V-240V, this must be done by an authorized electrician.



## Function introduction



## Safety & Warnings

- This device contains a button lithium battery that shall be stored and disposed properly.
- DO NOT expose the device to moisture.

## Product Data

|                       |                             |
|-----------------------|-----------------------------|
| Switch Type           | ZigBee 3.0 Switch           |
| Transmission Range    | 10-30m (Typical)            |
| Radio Frequency       | 2.4GHz                      |
| Power Supply          | 3V(1xCR2430 Battery)        |
| Buttons               | 4                           |
| Dimensions            | 50x50x11mm                  |
| Operating Temperature | -20 °C ~ +45 °C             |
| Working Humidity      | 10% ~ 95% RH non-condensing |
| Waterproof Grade      | IP20                        |
| Warranty              | 2 years                     |

## Product Description

Lightbee switch is a wireless transmitter that communicates with Philips Hue bridge. The switch uses a CR2430 battery that powers a built-in transmitter. This transmitter sends wireless radio signals that are used to remotely control the Philips Hue system.

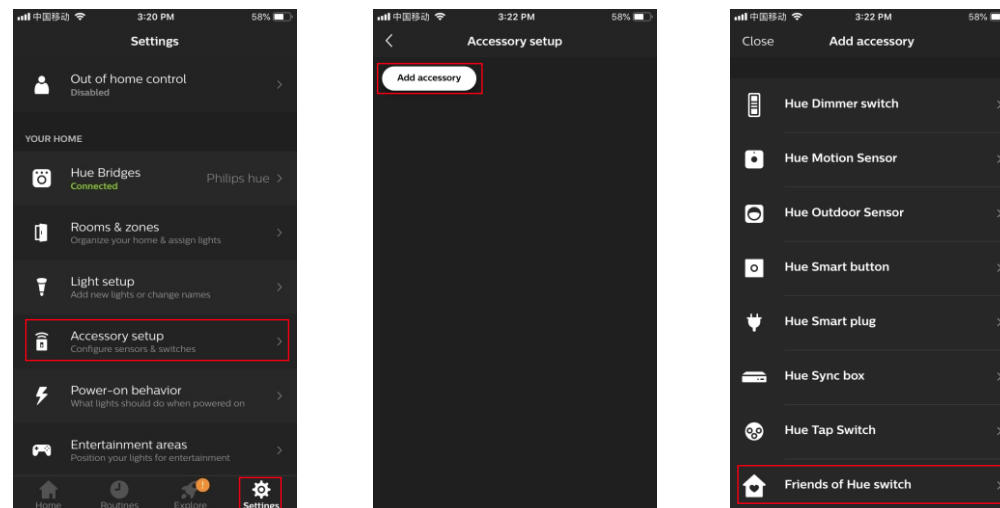
The switch can be configured through Hue App after added to the Hue bridge. It enables to control designated light devices in 2 designated rooms with 4 buttons. Functions of the 4 buttons can be configured separately through Hue App. The configurable functions includes ON/OFF, dim up/dim down, and system preset scene control.

## Operations

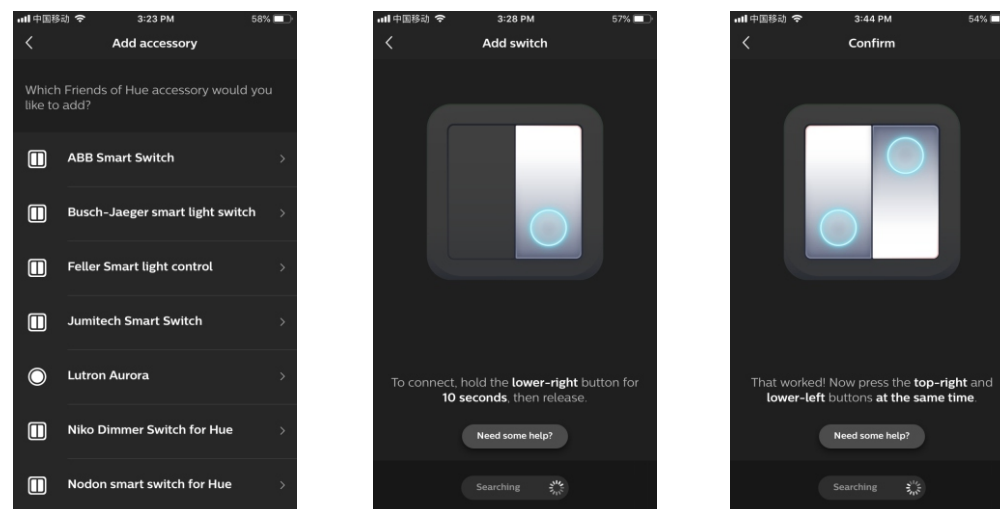
### 1. Add the Switch to Hue Bridge

**Step 1:** Configure your Hue Bridge correctly and add light devices to the Hue Bridge through Hue App as instructed.

**Step 2:** Tap "Accessory setup" on "Settings" page, then tap "Add accessory", then tap "Friends of Hue switch".



**Step 3:** Tap a brand to select it, any brand will work. Then operate the switch as instructed to enable it to be added to the Hue Bridge.

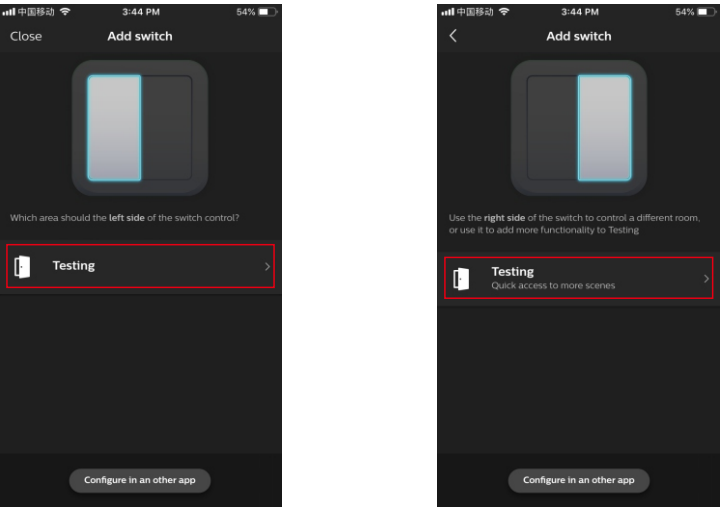


**Note:** When operate the switch as instructed by the Hue Bridge, please make sure that the switch position is correct with the top arrow being upward as indicated on the back of the switch.

**Note:** The below instruction is just an example of button combinations that a Hue Bridge requires to operate, please kindly operate the buttons as instructed by your Hue Bridge since the buttons it requires you to operate may be different from the below example.

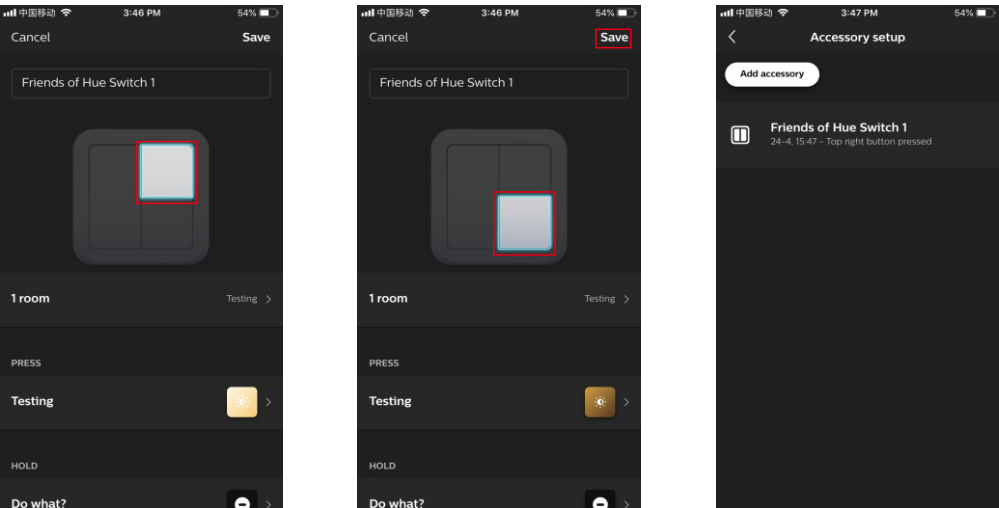
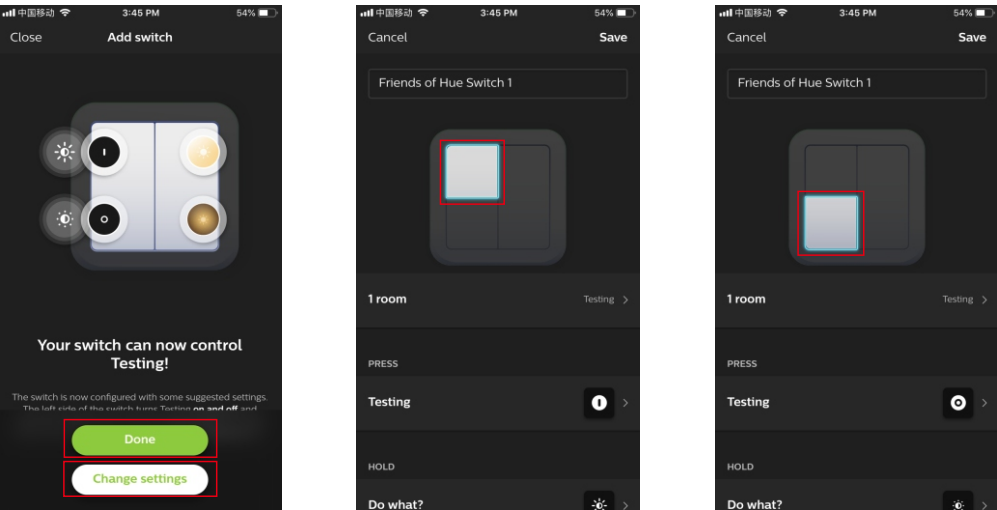
2.Select designated room/rooms to control

Step 1: Tap to select a room to be controlled by left side on the switch, then right side.



3.Configure the LIGHTBEE Switch through Hue App

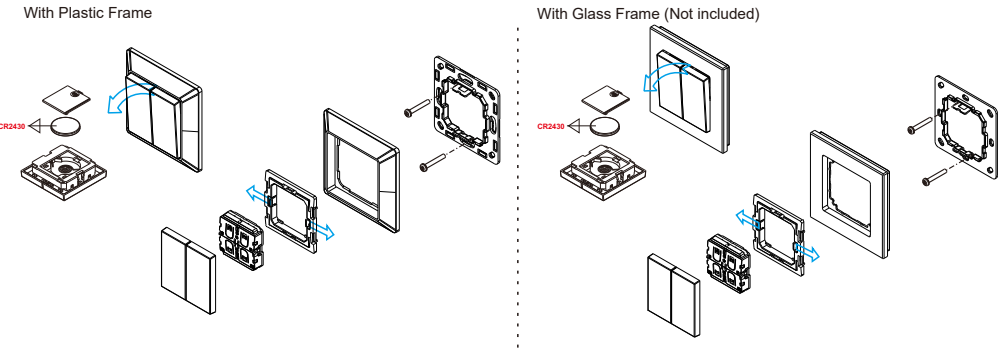
Step 1: Once added successfully, you can use the system suggested setting or configure the switch as per your preferences. Just tap "Done" to use suggested setting, or tap ""Change settings" to configure as instructed. 4 buttons can be configured one by one separately. Tap the button area to select the button to be configured.



4.Control the Light Devices in the Selected Room/Rooms with the Switch

After configured successfully, tap "Save" at upper right corner to save the settings. Then you can use the switch to control the light devices in the selected room/rooms.

Battery Replacement



The key part of this controller is a universal, extremely rotary standard switch element that can be integrated in numerous frames by different manufactures as below list:

|        |                               |
|--------|-------------------------------|
| BEKER  | S1, B1, B3, B7 glass          |
| GIRA   | Standard55, E2, Event, Esprit |
| JUNG   | A500, Aplus                   |
| MERTEN | M-smart, M-Arc, M-Plan        |