

# LED Cord DIMMER SWITCH MANUAL INSTRUCTION

## Item NO. D076-ZG ZIGBEE LED Cord Dimmer

The Smart Zigbee Dimmer with excellent compatibility to most Dimmable LED lamps also works perfectly with halogen or electronic transformer and incandescent lighting. Possibility of wireless voice control via Alexa or Google home.

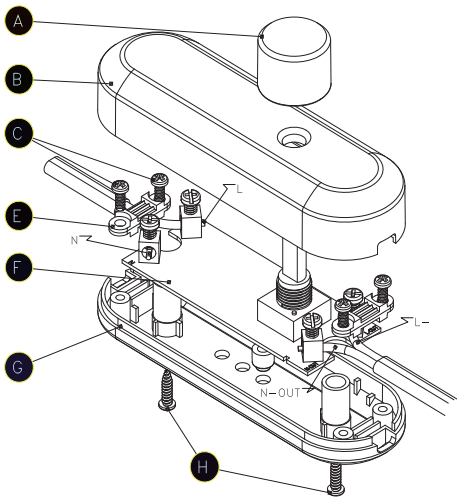
### Specs

Rated input voltage	220-240 Vac, 50Hz
Power range	5-50W @220-240V LED
	10-100W @220-240V INC, HAL
Type of load	LED Retrofit   Incandescent-halogen
Dimming	Rotary
Ambient temperature (Ta)	35 °C
Cables section	0,75 mm <sup>2</sup>
Dimension	96.7mm*24.9mm*39.4mm
Item weight	39.6g



### Installation

1. Unscrew the closing screws H
2. Take out the front cover B and the knob A
3. Unscrew the cord anchorage C
4. Strip the cable to be connected
5. Connect supply cable to the terminals L and N of the electronic board.
6. Connect lamp cable to the terminal identified by symbol of the electronic board.
7. Mount cord anchorage C
8. Mount front B and back G, screwing the screws H.



### Operation

#### 1. ON and OFF

- Quick press on/off and keep rotating the button to dim

#### 2. MIN.settings

- Clockwise or Anti-Clockwise to increase or decrease the min brightness.

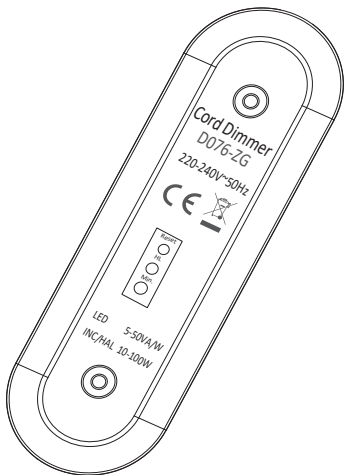
#### 3. Zigbee Network Pairing through Coordinator or Hub (Added to a Zigbee Network)

**Step 1:** Remove the device from previous zigbee network if it has already been added to, otherwise pairing will fail. Please refer to the part "**Factory Reset Manually**".

**Step 2:** From your ZigBee Controller or hub interface, choose to add lighting device and enter Pairing mode as instructed by the controller.

#### Step 4:

The Blue indicator will stop flashing and solid on for 10s then the device will appear in your controller's menu and can be controlled through controller or hub interface.



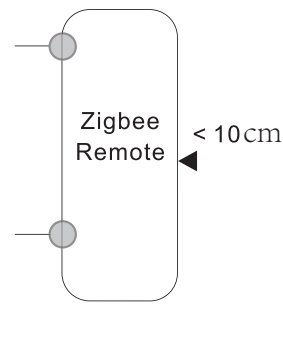
#### Step 3:

Double Press the reset button to activate the network pairing mode (The blue indicator light is flashing), network pairing mode will last for 15minutes once timeout repeat this step.

## 4. Touchlink to Zigbee Remote

Step 3: Bring the remote or touch panel within 10cm of the lighting device.

Step 4: Set the remote or touch panel into Touchlink commissioning, please refer to corresponding remote or touch panel manual to learn how.



Step 1: Short press "Reset" button 4 times.

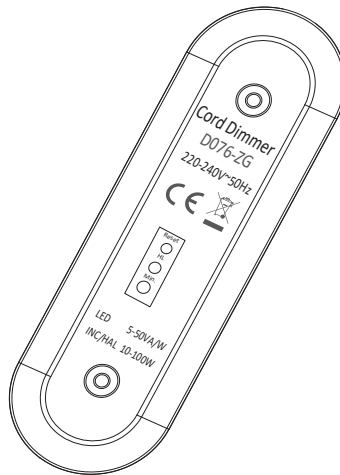
Step 2: The Green indicator will start flashing to show that the device is in touchlink commissioning. 180s timeout repeat this step.

Step 5: The connecting lights will start flashing to indicate the pairing processing. Once paired both the connecting lights and the green indicator light will stop flashing and you can control the lights by the remote.

- Note :
- 1) Directly Touchlink(both not added to a Zigbee network),each device can link with 1 remote.
  - 2) Touchlink after both added to a Zigbee network, each device can link with max.30 remotes.
  - 3) For Hue Bridge & Amazon Echo Plus , add remote and device to network first then Touchlink.
  - 4) After Touchlink,the device can be controlled by the linked remotes.

## 5. Factory Reset Manually

Note: All configuration parameters will be reset after the device is reset or removed from the network.



Step 1: Press and hold reset button for over 5 seconds.

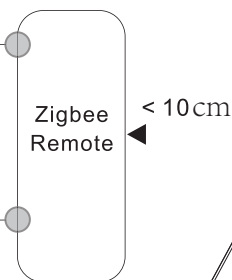
Step 2 : The Red indicator light will be on for 10s to show the device has been reset.

## 6. Find and Bind Mode

Note: Make sure the device and remote already added to the same zigbee network.

Step 3: Set the remote or touch panel (target node) into find and bind mode, and enable it to find and bind initiator, please refer to corresponding remote or touch panel manual.

Step 4: There shall be indication on the remote or touch panel that it bind the device successfully and can control it then to learn how.



Step 1: Press the reset button for 5 times.

Step 2 : The yellow indicator will start flashing. 180s timeout repeat this step.