

Duct Fan DV

[Download Wentyle](#)
[Download AlnorCAM](#)
[Buy via B2B](#)



Description

DV duct fan is used to blow and exhaust air to/from ventilation ducts. DV is connected with round ducts by male couplings.

Insulation class: class B, class F

Maximum temperature for our DV fan is +40C°, and minimum temperature is -20C°.

Ingress protection: IP55

Example identification

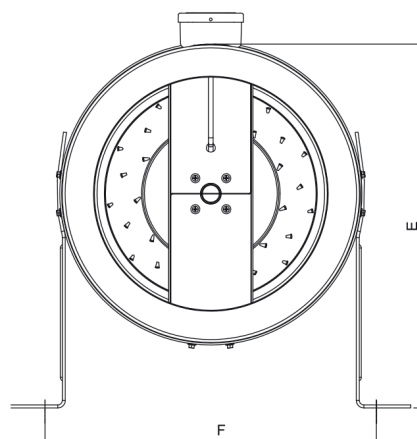
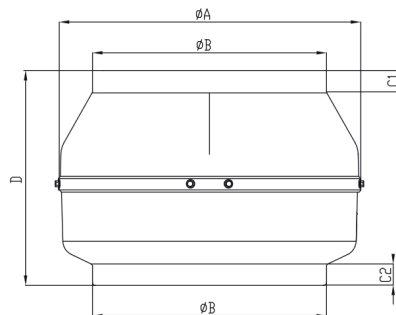
Product code: **DV** - aaa

type
ØA



** due to the adjustment of standards ErP fans, lots of fans may be different technical data - up to date and 100% accurate data on the rating plate of the fan*

Dimensions



Type	A [mm]	B [mm]	C1 [mm]	C2 [mm]	D [mm]	E [mm]	F [mm]
DV-100	245	97	22	22	197	273	268
DV-125	245	122	20	20	188	273	268
DV-150	272	147	23	25	192	286	295
DV-160	272	157	23	25	192	286	295
DV-200	330	196	30	28	230	380	352
DV-250	330	247	30	28	227	380	352
DV-315	400	313	30	30	285	415	422
DV-355	400	352	30	30	378	415	422

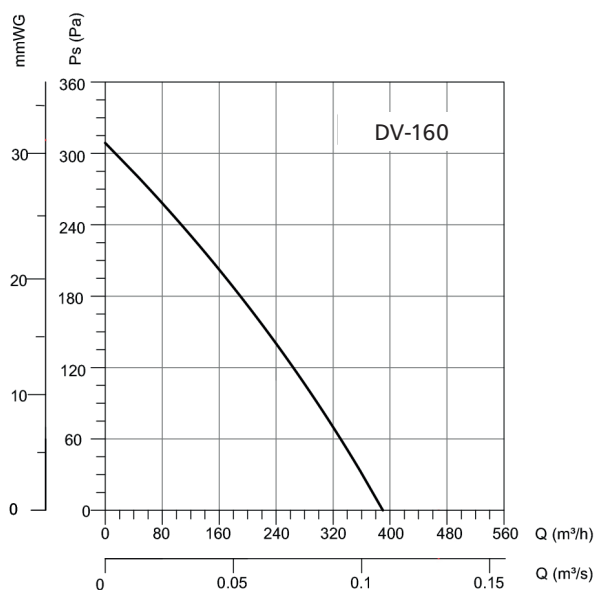
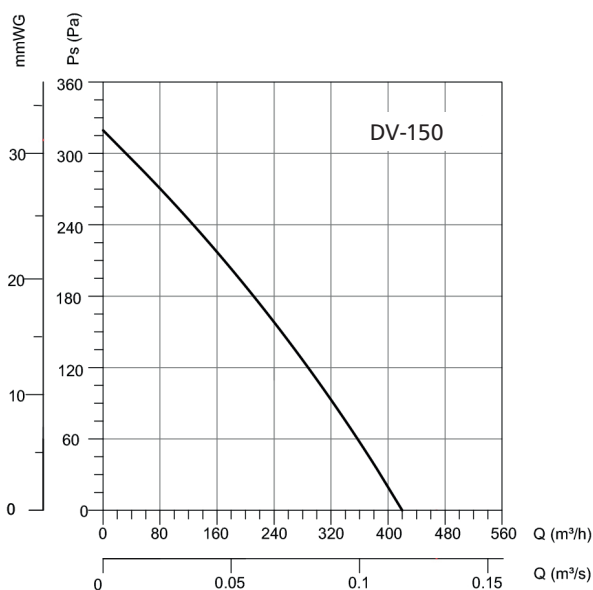
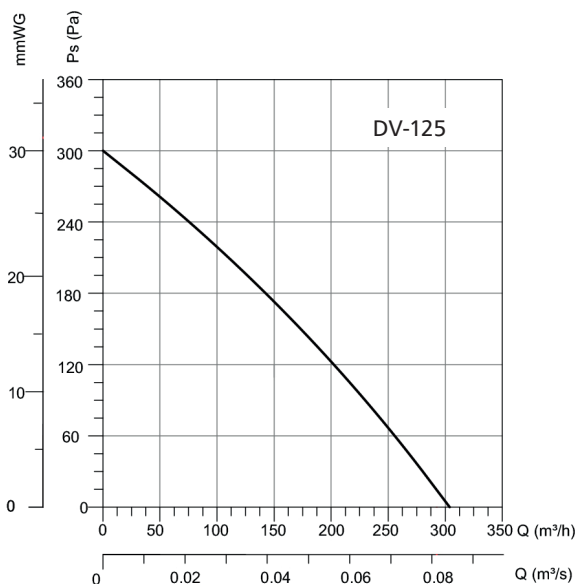
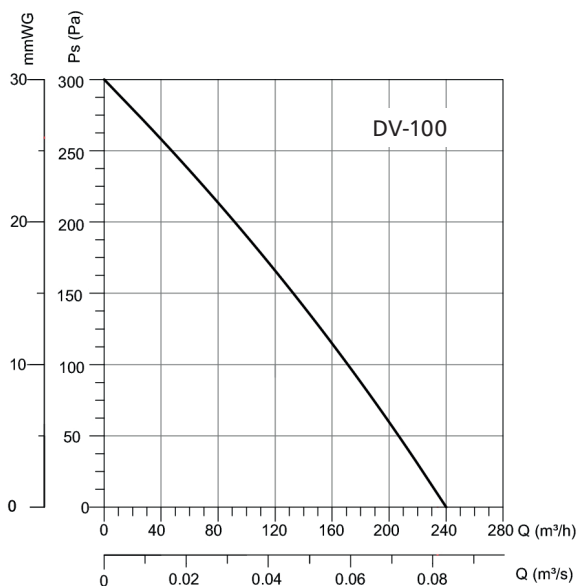
Duct Fan

DV

[Download Wentyle](#)
[Download AlnorCAM](#)
[Buy via B2B](#)

Technical data

Type	Voltage [V]	Frequency [Hz]	Power [W]	Current [A]	Speed [rpm]	Air flow [m³/h]	Noise level [db]	Weight [kg]
DV-100	230	50	80	0,3	2610	240	50	2,6
DV-125	230	50	80	0,36	2325	315	55	2,7
DV-150	230	50	85	0,38	2425	420	55	3,2
DV-160	230	50	90	0,4	2385	390	55	3
DV-200	230	50	95	0,43	2280	735	55	4,4
DV-250	230	50	124	0,56	2500	1010	57	4,9
DV-315	230	50	190	0,9	2560	1450	65	6,8
DV-355	230	50	123	0,63	1420	1300	66	9



Technical data

