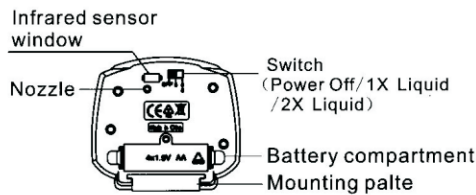
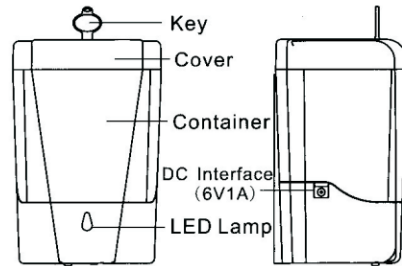


AUTOMATIC SOAP / FOAM DISPENSER User Manual
FUNCTION INSTRUCTION



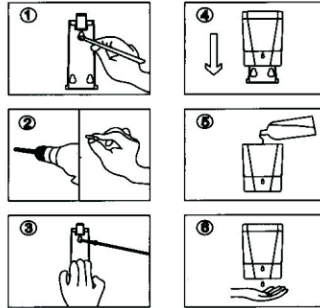
SPECIFICATION

MODEL	F1309
OUTER SIZE	L110*W100*H165MM
CAPACITY	700mL
DROP VOLUME	1 or 2mL (Soap) 0.7 or 1.4mL (Foam)
WEIGHT	480g
MATERIAL	ABS, PC
BATTERY	AA Batteris or DC 6V

TECHNO-PARAMETER

ELECTRICAL SOURCE VOLTAGE	DC6V
STATIC CURRENT	50uA
WORKING CURRENT	300mA
POWER	1.8W
EFFECT DISTANCE	8-12CM

INSTALLATION SHOW



INSTALLATION AND USE

1. Use the mounting plate as a template to mark the position.(Figure 1)
2. Drill two 5mm holes and insert plugs into the holes.(Figure 2)
3. Fasten the mounting plate on the wall with the provided screws.(Figure 3)
4. Slide the dispenser in the mounting plate.(Figure 4)
5. Insert 4Pcs batteries into battery compartment with proper polarity as shown on compartment. (Alkaline battery is recommended); if use DC6V Power Adapter (Adapter is Optional) , then insert adapter' s plug into dispenser' s DC interface.
6. Open the cover and fill in the soap or foam to the container.(Figure 5)
7. Put your hand under the sensor 8-12cm, and let the dispenser to start working for continuously until liquid soap come out from nozzle (figure 6).(When you use dispenser at first time, there was some air in the pump,you need work dispenser several times until liquid soap or foam drop down.)

FEATURES&INSTALLATION NOTES

1. Do not install the dispenser above the Mirror surface or above flowing water.
2. Do not install the dispenser with less than 2 inch(50cm) height beneath the table.
3. Soap dispenser is suitable for soap liquid, foam dispenser is suitable for foam liquid, it can't be mixed, otherwise it will cause the dispenser to not work properly.
4. The sensor is at the base of dispenser.The effect range is from 8-12cm undemeath the sensor.
5. The product is design for indoor use only.Direct sunlight or exposed locations can destroy the infrared sensor of the product.
6. Low voltage indicator when you find LED light twinkle continually while dispenser on standby mode, battery replace is necessary.
7. Can use ordinary alcohol.
8. This product doesn't have waterproof function, please place product far from dampness.

IF DISPENSER DOESN'T WORK

1. Check the battery whether the power use up or not at the right polarity.
2. Power switch not open.

IF DISPENSER DOESN'T DROP

1. You must operate dispenser several times when you first use it.
2. The liquid will congealed in winter, you need fill in some warm water,(about 60°C),after several minutes than operate it.
3. Perhaps no liquid.

CLEANING

1. If there has dust in the container, please clean the container then refill in the liquid.
2. Do not use water to wash the dispenser, clean the surface use wet towel;use dry towel to clean the battery compartment.
3. If you no use, please fill in some water, than operate dispenser several times to cleaning the output pipe and take out the battery.