



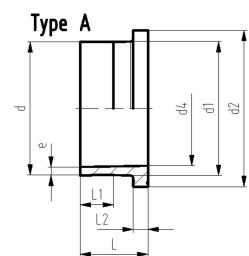
Type A



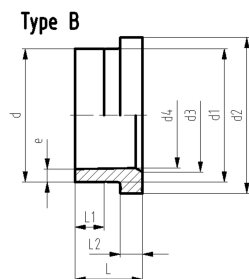
Type B



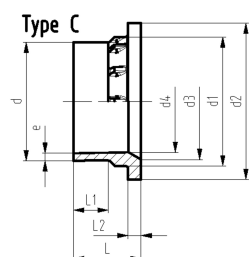
Type C



Type A



Type B



Type C

Flangekrave, PE100 SDR17,6 Tætningsflade, rillet

Generelt:

- Materiale: PE100
- Konventionel stuksvejsning iht. DS/INF 70-2
- Up to d315, suitable for butterfly valve type 567/568. Above use ecoFIT adaptor for butterfly valves SDR17.6 (d355-d1200)
- Up to d280, suitable for butterfly valve type 037/038/039. Above use ecoFIT adaptor for butterfly valves SDR17.6 (d315-d1200)
- Tætning: Profil flangepakning NBR og EPDM
- Tætning d710-d1000: Fladpakning EPDM varenr. 748 400 330-333

* Available starting Q3 2015

** Not suitable for butterfly valves

*** Not suitable for butterfly valves for type 037/038/039

	d [mm]	DN [mm]	FM	code	weight [kg]
*	50	40	IR	753 798 210	0,093
*	63	50	IR	753 798 211	0,118
*	75	65	IR	753 798 212	0,220
*	90	80	IR	753 798 213	0,291
*	110	100	IR	753 798 214	0,389
*	125	100	IR	753 798 215	0,421
*	140	125	IR	753 798 216	0,648
*	160	150	IR	753 798 217	0,703
*	180	150	IR	753 798 218	0,739
*	200	200	IR	753 798 219	1,331
*	225	200	IR	753 798 220	1,304
	250	250	--	753 798 851	2,272
	280	250	--	753 798 852	2,154
**	315	300	--	753 798 853	3,819
***	355	350	--	753 798 854	4,155
***	400	400	--	753 798 855	7,810
***	450	500	--	753 798 856	10,914
***	500	500	--	753 798 857	9,865
***	560	600	--	753 798 858	14,875
***	630	600	--	753 798 859	12,515
***	710	700	--	753 798 860	15,878
***	800	800	--	753 798 861	20,948
***	900	900	--	753 798 862	29,183
***	1000	1000	--	753 798 863	36,209

	d [mm]	DN [mm]	d1 [mm]	d2 [mm]	d3 [mm]	d4 [mm]	L [mm]	L1 [mm]	L2 [mm]	e [mm]	Type
*	50	40	60	88		44,2	62	32	12	3,0	A
*	63	50	75	102		55,8	68	38	14	3,8	A
*	75	65	89	122		63,0	80	46	16	4,5	A
*	90	80	105	138		76,4	80	44	17	5,4	A
*	110	100	125	158		94,0	80	43	18	6,6	A
*	125	100	132	158	114	107,6	82	36	18	7,4	B
*	140	125	155	188	127	120,5	89	42	18	8,3	B
*	160	150	175	212	158	138,3	92	47	18	9,5	C
*	180	150	182	212		155,4	92	45	20	10,7	A
*	200	200	232	268	203	173,6	100	42	24	11,9	C
*	225	200	235	268	210	196,3	100	42	24	13,4	C
	250	250	285	320	245	220,0	121	61	25	14,8	B
	280	250	291	320	265	246,0	119	69	25	16,6	B
**	315	300	335	370	300	277,0	164	86	25	18,7	B
***	355	350	373	430	340	312,0	180	100	30	21,1	B
***	400	400	427	482	385	352,0	197	110	33	23,7	B
***	450	500	514	585	400	396,0	141	64	46	26,7	B
***	500	500	530	585	440	440,0	141	67	46	29,7	B
***	560	600	615	685	430	493,0	142	60	50	33,2	B

	d [mm]	DN [mm]	d1 [mm]	d2 [mm]	d3 [mm]	d4 [mm]	L [mm]	L1 [mm]	L2 [mm]	e [mm]	Type	
***	630	600	642	685	545	555,0	144	71	50	37,4	B	
***	710	700	737	800		626,0	120	20	50	42,1	A	
***	800	800	840	905		705,0	120	18	52	47,4	A	
***	900	900	944	1005		793,0	140	15	55	53,3	A	
***	1000	1000	1047	1110		881,0	140	10	60	59,3	A	

The technical data are not binding. They neither constitute expressly warranted characteristics nor guaranteed properties nor a guaranteed durability. They are subject to modification. Our General Terms of Sale apply.

Georg Fischer Piping Systems Ltd, Postfach, CH-8201 Schaffhausen/Switzerland
Phone +41 -(0)52-631 1111
e-mail: info.ps@georgfischer.com
Internet: <http://www.gfps.com>