



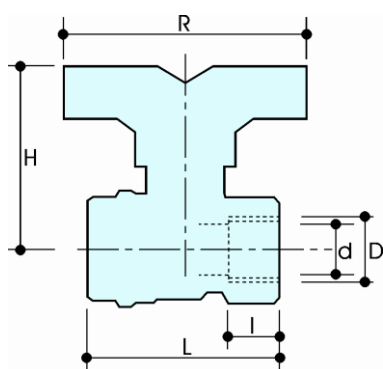
BESKRIVELSE

G52

Kraftig gaskuglehane med fuldt gennembløb.
Muffe x muffe. Gult T-greb.

I henhold til En 331 standard.

DIMENSIONER



D	1/4"	3/8"	1/2"	3/4"	1"	1 1/4"
d	10	10	15	20	25	32
H	43	43	46	55.5	65	71
I	11.5	12	17	18	21.5	23.5
L	46	47	62	69	84	96
R	58	58	58	65	75	75
Ch	17	21	26	32	40	49
Acc. Type	1	1	1	2	3	3
PN	8	8	8	8	8	8
Gr.	140	140	220	350	640	990

Alle gevind er i overensstemmelse med ISO 7 eller ISO 228 standarder.

MATERIALER

Ventilhus	Messing CW617N (DIN 50930 part.6) CuZn40Pb2
Kugle	Messing CW617N (DIN 50930 part.6) CuZn40Pb2 Krombelagt.
Spindel	Messing CW614N (DIN 50930 part.6) CuZn39Pb3
Pakdåse	Messing CW614N (DIN 50930 part.6) CuZn39Pb3
Pakninger	2 x PTFE
O-ringe	2 x NBR - PTFE
Greb	Gult T-greb

VARIANTER

G52	M x M, gult T-greb
G52/1	M X N, gult T-greb

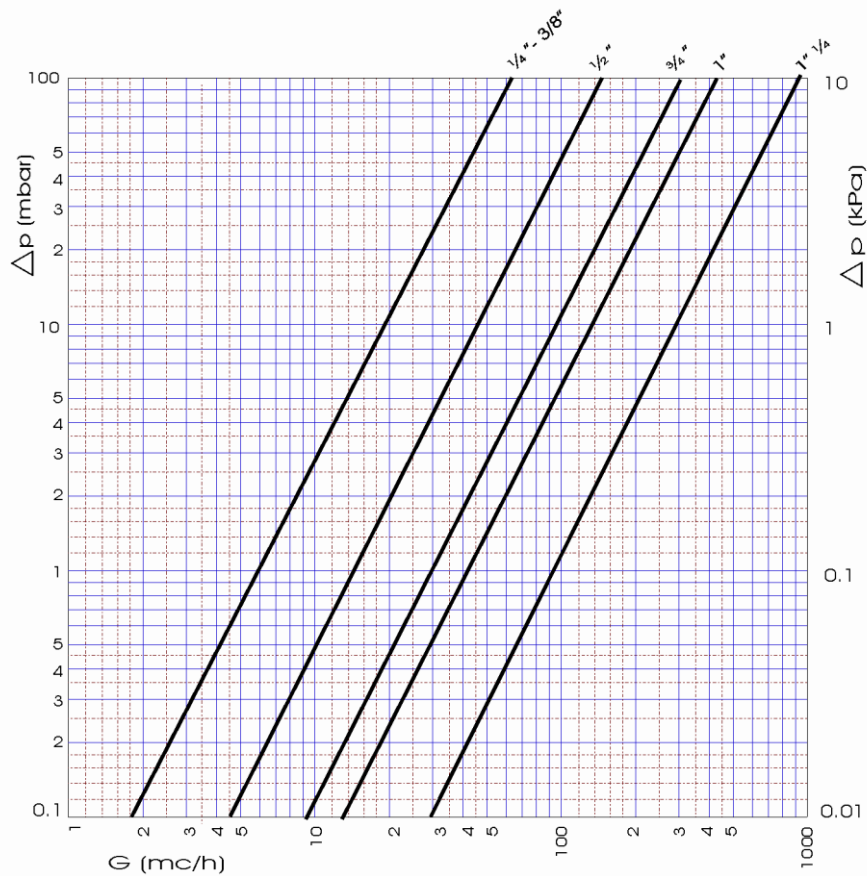
GREBSVARIANTER

G51	Gult stålgreb
G52	Gult T-greb

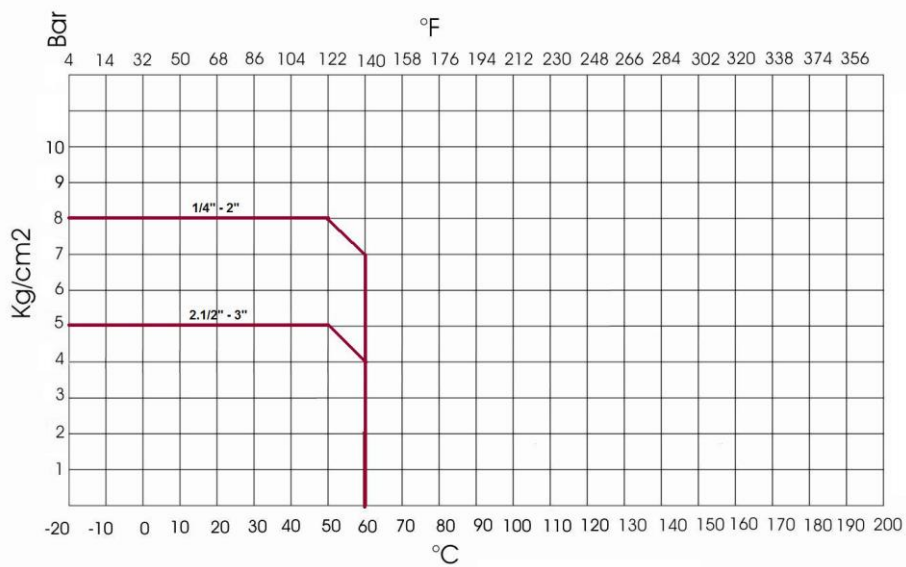
Godkendelser



TRYKTABSDIAGRAM



ANBEFALET DRIFTSTEMPERATUR / MAKSIMALTRYK



Driftstemperatur - vidde: -20 + 60°C