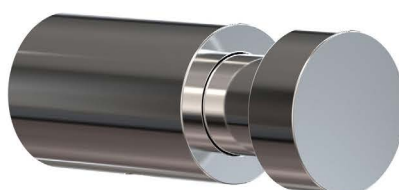


# HOOK 12 - CARE INSTRUCTIONS

N1000, O1000



N1000  
» Brushed

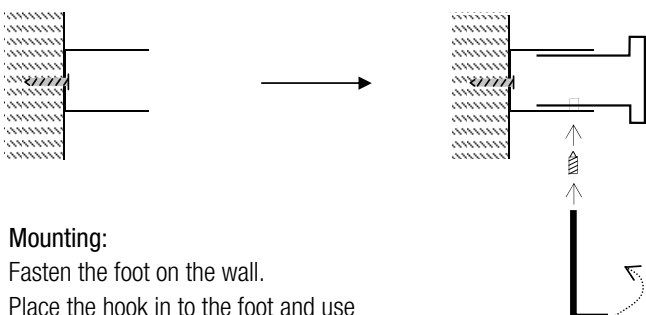


O1000  
» Polished

**Material:** Stainless steel, AISI 304

**Design:** FROST A/S  
**Manufacturer:** FROST A/S

**Dimensions:**  
 Diameter: Ø16 mm  
 Projection: 40 mm



**Mounting:**  
 Fasten the foot on the wall.  
 Place the hook in to the foot and use the allen key to tighten the set screw.

## Cleaning and maintenance:

All surfaces should be cleaned with a microfiber cloth, glass cleaner or other non-abrasive and gentle agents. Use a soft dry cloth to wipe dry. When polishing steel with a hairline finish, please remember always to polish with the grain of the steel.

## Attention:

Never use solvents or aggressive household cleaners like bleach, acids (e.g. descalers) or ammonia-based bathroom cleaner to clean the product. Steel wool and hard brushes can permanently damage the surface of the steel.

## Practical information:

In the case of manufacturing defects, please contact the store where the product was purchased. Always remember to bring your receipt.

## Exclusion of liability:

FROST accepts no liability whatsoever for damage to persons or property that occurs as a result of improper installation or maintenance, particularly if the instructions have not been observed in full.