

CATALOGO CF 02
INSERTI FILETTATI



	CFACITT - TESTA TONDA CORPO CILINDRICO LISCIO 6 FLAT HEAD ROUND BODY PLAIN CFACITTC - TESTA TONDA CORPO CILINDRICO LISCIO CHIUSO FLAT HEAD ROUND BODY PLAIN CLOSE END
	CFACITR - TESTA RIDOTTA CORPO CILINDRICO LISCIO 7 REDUCED HEAD ROUND BODY PLAIN CFACITRC - TESTA RIDOTTA CORPO CILINDRICO LISCIO CHIUSO REDUCED HEAD ROUND BODY PLAIN CLOSE END
	CFACITTG - TESTA TONDA CORPO CILINDRICO ZIGRINATO 8 HEAD KNURLED BODY CFACITTCG - TESTA TONDA CORPO CILINDRICO ZIGRINATO CHIUSO FLAT HEAD KNURLED BODY CLOSE END
	CFACITRG - TESTA RIDOTTA CORPO CILINDRICO ZIGRINATO 9 REDUCED HEAD KNURLED BODY CFACITRCG - TESTA RIDOTTA CORPO CILINDRICO ZIGRINATO CHIUSO REDUCED HEAD KNURLED BODY CLOSE END
	CFACITS - TESTA SVASATA CORPO CILINDRICO LISCIO 10 COUNTERSUNK HEAD ROUND BODY PLAIN
	CFACITSG - TESTA SVASATA CORPO CILINDRICO ZIGRINATO 10 COUNTERSUNK HEAD KNURLED BODY CFACITSCG - TESTA SVASATA CORPO CILINDRICO ZIGRINATO CHIUSO 11 COUNTERSUNK HEAD KNURLED BODY CLOSE END
	CFACITTSE - TESTA TONDA CORPO SEMI ESAGONALE 11 FLAT HEAD SEMI-HEX BODY
	CFACITTQ - TESTA TONDA CORPO QUADRO 12 FLAT HEAD SQUARE BODY CFACISLB - TESTA TONDA CORPO CILINDRICO APERTO FLAT HEAD SLOTTED BODY
	CFACITTE - TESTA TONDA CORPO ESAGONALE 13 FLAT HEAD FULL HEX BODY CFACITTEC - TESTA TONDA CORPO ESAGONALE CHIUSO FLAT HEAD FULL HEX BODY CLOSE END
	CFACIER - TESTA RIDOTTA CORPO ESAGONALE 14 REDUCED HEX HEAD FULL-HEX BODY CFACIERC - TESTA RIDOTTA CORPO ESAGONALE CHIUSO REDUCED HEX HEAD FULL-HEX BODY CLOSE END
	CFACIERSE - TESTA RIDOTTA CORPO SEMI-ESAGONALE 15 REDUCED HEX HEAD INNER-HEX BODY



CFACITTSE - TESTA TONDA CORPO SEMI-ESAGONALE 15
 FLAT HEAD INNER-HEX BODY



CFACITRG - TESTA RIDOTTA CORPO CILINDRICO ZIGRINATO FILETTO IN POLLICI 16
 REDUCED HEAD KNURLED BODY



CFACIERSE - TESTA RIDOTTA CORPO SEMI-ESAGONALE FILETTO IN POLLICI 16
 REDUCED HEX HEAD INNER-HEX BODY-UK



CFIXITT - TESTA TONDA CORPO CILINDRICO LISCIO IN ACCIAIO INOX 17
 FLAT HEAD ROUND BODY PLAIN STAINLESS STEEL



CFIXITR - TESTA RIDOTTA CORPO CILINDRICO LISCIO IN ACCIAIO INOX 17
 REDUCE HEAD ROUND BODY PLAIN STAINLESS STEEL



CFIXITTG - TESTA TONDA CORPO CILINDRICO ZIGRINATO IN ACCIAIO INOX 18
 FLAT HEAD KNURLED BODY STAINLESS STEEL

CFIXITTCG - TESTA TONDA CORPO CILINDRICO ZIGRINATO CHIUSO ACCIAIO INOX
 FLAT HEAD KNURLED BODY CLOSE END STAINLESS STEEL



CFIXITRG - TESTA RIDOTTA CORPO CILINDRICO ZIGRINATO IN ACCIAIO INOX 19
 REDUCE HEAD KNURLED BODY STAINLESS STEEL

CFIXITRCG - TESTA RIDOTTA CORPO CILINDRICO ZIGRINATO CHIUSO IN ACCIAIO INOX
 REDUCE HEAD KNURLED BODY CLOSE END STAINLESS STEEL



CFIXITS - TESTA SVASATA CORPO CILINDRICO LISCIO IN ACCIAIO INOX 20
 COUNTERSUNK HEAD ROUND BODY PLAIN STAINLESS STEEL



CFIXITSG - TESTA SVASATA CORPO CILINDRICO ZIGRINATO IN ACCIAIO INOX 21
 COUNTERSUNK HEAD KNURLED BODY STAINLESS STEEL

CFIXITSCG - TESTA SVASATA CORPO CILINDRICO ZIGRINATO CIECO IN ACCIAIO INOX
 COUNTERSUNK HEAD KNURLED BODY CLOSE END STAINLESS STEEL



CFIXIERSE - TESTA RIDOTTA CORPO SEMI-ESAGONALE IN ACCIAIO INOX 22
 REDUCE HEX HEAD INNER-HEX BODY STAINLESS STEEL

CFIXIERSEC - TESTA RIDOTTA CORPO SEMI-ESAGONALE IN ACCIAIO INOX CHIUSI
 REDUCE HEAD INNER-HEX BODY CLOSE END STAINLESS STEEL



CFIXITTSE - TESTA TONDA CORPO SEMI-ESAGONALE IN ACCIAIO INOX 23
 FLAT HEAD INNER-HEX BODY STAINLESS STEEL

CFIXITTSEC - TESTA TONDA CORPO SEMI-ESAGONALE CHIUSO ACCIAIO INOX
 FLAT HEAD INNER-HEX BODY CLOSE END STAINLESS STEEL



CFALITT - TESTA TONDA CORPO CILINDRICO LISCIO ALLUMINIO 24
 FLAT HEAD ROUND BODY PLAIN ALUMINIUM

CFALITR - TESTA RIDOTTA CORPO CILINDRICO LISCIO ALLUMINIO
 REDUCED HEAD ROUND BODY PLAIN ALUMINIUM

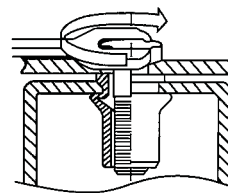


CFALITTG - TESTA TONDA CORPO CILINDRICO ZIGRINATO ALLUMINIO 25
 FLAT HEAD KNURLED BODY ALUMINIUM

CFALITRG - TESTA RIDOTTA CORPO CILINDRICO ZIGRINATO ALLUMINIO
 REDUCED HEAD KNURLED BODY ALUMINIUM

INFORMAZIONI TECNICHE

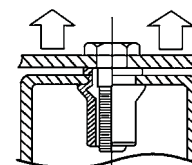
TECHNICAL INFORMATION



COPPIA DI SERRAGGIO MASSIMA (Nm)

MAX TIGHTENING TORQUE (Nm)

MATERIALE MATERIAL	TESTA HEAD	CORPO BODY	MISURA FILETTO THREAD SIZE						
			M3	M4	M5	M6	M8	M10	M12
FERRO C4C STEEL	TONDA FLAT	CILINDRICO E ESAGONALE ROUND AND HEXAGONAL	2	5	8,5	15	26	50	80
	SVASATA COUNTERSUNK	CILINDRICO ROUND	1	4	8	15	26	45	70
	RIDOTTA REDUCED	CILINDRICO E ESAGONALE ROUND AND HEXAGONAL	1	3	6	11	20	32	50
INOX (ANSI 304) STAINLESS STEEL	TONDA FLAT	CILINDRICO E ESAGONALE ROUND AND HEXAGONAL	2	5	8,5	15	26	50	80
	SVASATA COUNTERSUNK	CILINDRICO ROUND	1	4	8	15	26	45	70
	RIDOTTA REDUCED	CILINDRICO E ESAGONALE ROUND AND HEXAGONAL	1	3	6	11	20	32	50
ALLUMINIO Almg 2,5 ALUMINIUM	TONDA FLAT	CILINDRICO ROUND	0,7	2,5	5	8	20	25	-
	SVASATA COUNTERSUNK		0,7	2,5	5	8	20	25	-
	RIDOTTA REDUCED		0,7	2,5	5	8	20	25	-



CARICO DI TRAZIONE SUL FILETTO (N)

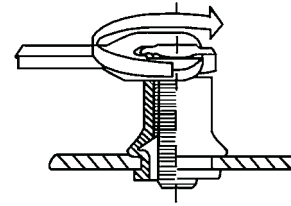
PULL-OUT FORCE (N)

MATERIALE MATERIAL	TESTA HEAD	CORPO BODY	MISURA FILETTO THREAD SIZE						
			M3	M4	M5	M6	M8	M10	M12
FERRO C4C STEEL	TONDA FLAT	CILINDRICO E ESAGONALE ROUND AND HEXAGONAL	3900	6800	11500	16500	25000	32000	34000
	SVASATA COUNTERSUNK								
	RIDOTTA REDUCED								
INOX (ANSI 304) STAINLESS STEEL	TONDA FLAT	CILINDRICO E ESAGONALE ROUND AND HEXAGONAL	3900	6800	11500	16500	25000	32000	34000
	SVASATA COUNTERSUNK								
	RIDOTTA REDUCED								
ALLUMINIO Almg 2,5 ALUMINIUM	TONDA FLAT	CILINDRICO ROUND	1900	4000	6500	7800	12300	17500	-
	SVASATA COUNTERSUNK								
	RIDOTTA REDUCED								

INFORMAZIONI TECNICHE

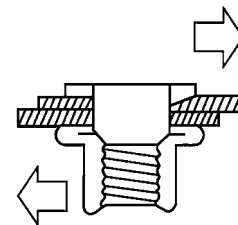
TECHNICAL INFORMATION

TENUTA ALLA COPPIA DIRETTA (Nm) TORQUE-TO-TURN (Nm)



MATERIALE MATERIAL	TESTA HEAD	CORPO BODY	MISURA FILETTO THREAD SIZE						
			M3	M4	M5	M6	M8	M10	M12
FERRO C4C STEEL	TONDA FLAT	CILINDRICO ROUND	0,5	1	2	4,5	5,5	11	30
	SVASATA COUNTERSUNK		0,4	0,8	1,5	3,5	4,5	8,5	24
	RIDOTTA REDUCED		0,4	0,8	1,5	3,5	4,5	8,5	24
INOX (ANSI 304) STAINLESS STEEL	TONDA DOME	CILINDRICO ROUND	0,5	1	2	4,5	5,5	11	30
	SVASATA COUNTERSUNK		0,4	0,8	1,5	3,5	4,5	8,5	24
	RIDOTTA REDUCED		0,4	0,8	1,5	3,5	4,5	8,5	24
ALLUMINIO Almg 2,5 ALUMINIUM	TONDA DOME	CILINDRICO ROUND	0,25	0,9	1,5	3,5	5	6,5	21
	SVASATA COUNTERSUNK		0,2	0,7	1,2	2,5	4	5	16
	RIDOTTA REDUCED		0,2	0,7	1,2	2,5	4	5	16

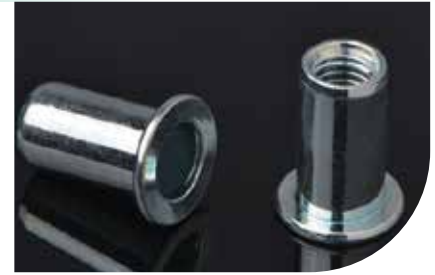
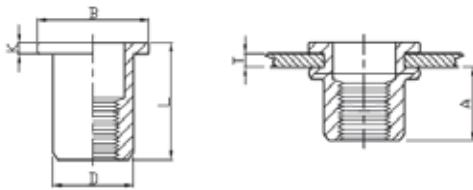
VALORI AL TAGLIO (N) SHEAR FORCE (N)



MATERIALE MATERIAL	TESTA HEAD	CORPO BODY	MISURA FILETTO THREAD SIZE						
			M3	M4	M5	M6	M8	M10	M12
FERRO C4C STEEL	TONDA FLAT	CILINDRICO E ESAGONALE ROUND AND HEXAGONAL	900	1500	2000	3000	4400	5000	6500
	SVASATA COUNTERSUNK								
	RIDOTTA REDUCED								
INOX (ANSI 304) STAINLESS STEEL	TONDA FLAT	CILINDRICO E ESAGONALE ROUND AND HEXAGONAL	900	1500	2000	3000	4400	5000	6500
	SVASATA COUNTERSUNK								
	RIDOTTA REDUCED								
ALLUMINIO Almg 2,5 ALUMINIUM	TONDA FLAT	CILINDRICO ROUND	600	1000	1200	2000	2400	3800	-
	SVASATA COUNTERSUNK								
	RIDOTTA REDUCED								

CFACITT

TESTA TONDA CORPO CILINDRICO LISCIO
FLAT HEAD ROUND PLAIN BODY

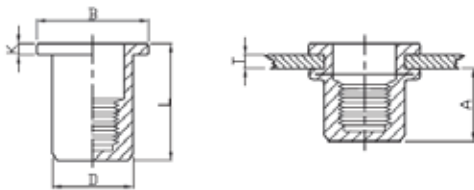


Unit: mm

FILETTO	TORSIONE Nm	CODICE	T (grip range) Min Max	A Ref	FORO +0.10	D +0.07 -0.1	B +/-0,3	K +/-0,2	L +/-0,3
M3	2	CF85ACITTM03C	0.5-1.5	4,7	5,0	4,9	7,2	0,8	8,5
M3	2	CF85ACITTM03L	1.5-2.5	4,7	5,0	4,9	7,2	0,8	9,5
M4	5	CF85ACITTM04C	0.5-2.0	6,0	6,0	5,9	8,5	0,8	10,3
M4	5	CF85ACITTM04L	2.0-3.5	6,0	6,0	5,9	8,5	0,8	12,0
M5	8,5	CF85ACITTM05C	0.5-2.5	7,5	7,0	6,9	10,0	1,0	13,0
M5	8,5	CF85ACITTM05L	2.5-5.0	8,5	7,0	6,9	10,0	1,0	17,0
M6	15	CF85ACITTM06C	0.5-3.0	9,2	9,0	8,9	12,3	1,3	15,5
M6	15	CF85ACITTM06L	3.0-5.5	9,2	9,0	8,9	12,3	1,3	18,0
M8	26	CF85ACITTM08C	0.5-3.5	11,5	11,0	10,9	15,0	1,5	18,5
M8	26	CF85ACITTM08L	3.5-6.0	11,5	11,0	10,9	15,0	1,5	21,0
M10	50	CF85ACITTM10C13	0.5-2.5	11,5	13,0	12,9	16,3	1,5	17,0
M10	50	CF85ACITTM10L13	2.5-4.0	12,5	13,0	12,9	17,0	1,6	21,0
M10	50	CF85ACITTM10C12	1.0-3.5	11,0	12,0	11,9	16,0	1,6	19,0
M12	80	CF85ACITTM12C15	1.0-4.0	13,5	15,0	14,9	18,0	1,7	22,0
M12	80	CF85ACITTM12L15	4.0-6.5	13,5	15,0	14,9	18,0	1,7	25,0
M12	80	CF85ACITTM12C16	1.0-4.0	16,0	16,0	15,9	22,0	2,0	25,0

CFACITTC

TESTA TONDA CORPO CILINDRICO LISCIO CHIUSO
FLAT HEAD ROUND BODY PLAIN CLOSE END



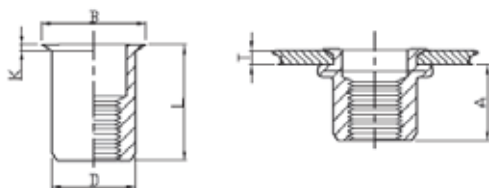
(MATERIALE DISPONIBILE SOLO SU RICHIESTA / ONLY ON DEMAND)

Unit: mm

FILETTO	TORSIONE Nm	CODICE	T (grip range) Min Max	A Ref	FORO +0.10	D +0.07 -0.1	B +/-0,3	K +/-0,2	L +/-0,3
M3	2	CF85ACITTCM03C	0.5-1.5	10,0	5,0	4,9	7,2	0,8	13,3
M4	5	CF85ACITTCM04C	0.5-2.0	11,3	6,0	5,9	9,0	0,8	16,0
M4	5	CF85ACITTCM04L	2.0-4.0	11,3	6,0	5,9	9,0	0,8	18,0
M5	8,5	CF85ACITTCM05C	0.5-2.5	11,5	7,0	6,9	10,0	1,0	17,0
M5	8,5	CF85ACITTCM05L	2.5-5.0	11,5	7,0	6,9	10,0	1,0	19,0
M6	15	CF85ACITTCM06C	0.5-3.0	12,7	9,0	8,9	12,3	1,3	19,2
M6	15	CF85ACITTCM06L	3.0-5.5	12,7	9,0	8,9	12,3	1,3	21,0
M8	26	CF85ACITTCM08C	0.5-3.0	14,8	11,0	10,9	15,0	1,5	21,5
M8	26	CF85ACITTCM08L	3.0-5.5	14,8	11,0	10,9	15,0	1,5	24,0
M10	50	CF85ACITTCM10C13	1.0-4.0	19,2	13,0	12,9	17,0	1,6	27,0

CFACITR

TESTA RIDOTTA CORPO CILINDRICO LISCIO
REDUCED HEAD ROUND PLAIN BODY

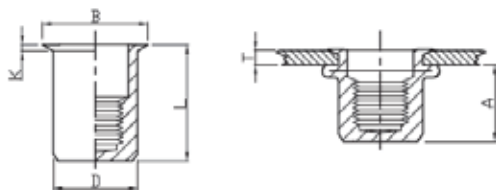


Unit: mm

FILETTO	TORSIONE Nm	CODICE	T (grip range) Min Max	A Ref	FORO +0.10	D +0.07 -0.1	B +/-0,3	K +/-0,2	L +/-0,3
M3	1	CF85ACITRM03C	0.5-1.5	6,2	5,0	4,9	6,0	0,5	9,0
M4	3	CF85ACITRM04C	0.5-2.0	6,5	6,0	5,9	7,0	0,5	10,5
M4	3	CF85ACITRM04L	2.0-4.0	6,5	6,0	5,9	7,0	0,5	13,0
M5	6	CF85ACITRM05C	0.5-2.0	7,0	7,0	6,9	8,0	0,5	11,5
M5	6	CF85ACITRM05L	2.0-4.0	7,0	7,0	6,9	8,0	0,5	13,0
M6	11	CF85ACITRM06C	0.5-2.5	8,5	9,0	8,9	10,5	0,6	14,0
M6	11	CF85ACITRM06L	2.5-5.0	8,5	9,0	8,9	10,0	0,6	17,0
M8	20	CF85ACITRM08C	0.5-3.0	10,0	11,0	10,9	12,0	0,65	16,5
M8	20	CF85ACITRM08L	3.0-5.0	10,0	11,0	10,9	12,0	0,65	18,5
M10	32	CF85ACITRM10C13	0.5-3.0	13,0	13,0	12,9	14,1	0,7	17,7
M10	32	CF85ACITRM10L13	3.0-5.5	13,0	13,0	12,9	14,1	0,7	21,0
M10	32	CF85ACITRM10C12	0.5-3.0	12,5	12,0	11,9	13,0	0,7	18,0

CFACITRC

TESTA RIDOTTA CORPO CILINDRICO LISCIO CHIUSO
REDUCED HEAD ROUND PLAIN BODY CLOSED



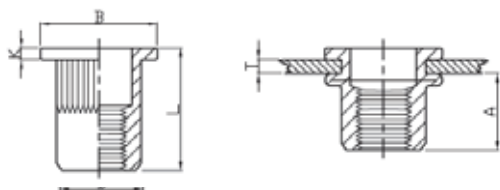
(MATERIALE DISPONIBILE SOLO SU RICHIESTA / ONLY ON DEMAND)

Unit: mm

FILETTO	TORSIONE Nm	CODICE	T (grip range) Min Max	A Ref	FORO +0.10	D +0.07 -0.1	B +/-0,3	K +/-0,2	L +/-0,3
M4	3	CF85ACITRCM04C	0.5-2.0	11,0	6,0	5,9	7,0	0,5	15,0
M4	3	CF85ACITRCM04L	2.0-3.5	11,0	6,0	5,9	7,0	0,5	16,0
M5	6	CF85ACITRCM05C	0.5-2.0	12,5	7,0	6,9	8,0	0,5	16,5
M5	6	CF85ACITRCM05L	2.0-3.5	12,5	7,0	6,9	8,0	0,5	17,5
M6	11	CF85ACITRCM06C	0.5-2.5	15,5	9,0	8,9	10,0	0,6	20,5
M6	11	CF85ACITRCM06L	2.5-4.0	15,5	9,0	8,9	10,0	0,6	22,0
M8	20	CF85ACITRCM08C	0.5-3.0	17,0	11,0	10,9	12,0	0,65	23,0
M8	20	CF85ACITRCM08L	2.5-4.5	17,0	11,0	10,9	12,0	0,65	24,5
M10	32	CF85ACITRCM10C13	1.0-3.0	18,2	13,0	12,9	14,1	0,7	24,5
M10	32	CF85ACITRCM10L13	3.0-5.0	18,2	13,0	12,9	14,1	0,7	26,0

CFACITTG

TESTA TONDA CORPO CILINDRICO ZIGRINATO
FLAT HEAD KNURLED BODY

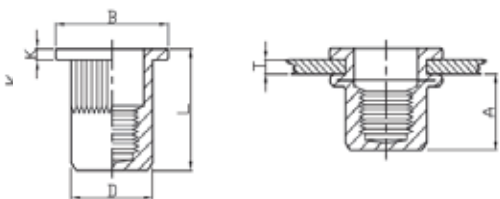


Unit: mm

FILETTO	TORSIONE Nm	CODICE	T (grip range) Min Max	A Ref	FORO +0.10	D +0.07 -0.1	B +/-0,3	K +/-0,2	L +/-0,3
M3	2	CF85ACITTM03C	0.5-1.5	6,0	5,0	4,9	8,0	0,8	10,0
M3	2	CF85ACITTM03L	2.0-3.0	6,0	5,0	4,9	8,0	0,8	11,0
M4	5	CF85ACITTM04C	0.5-2.0	6,0	6,0	5,9	9,0	0,8	10,5
M4	5	CF85ACITTM04L	2.0-3.5	6,0	6,0	5,9	9,0	0,8	12,0
M5	8,5	CF85ACITTM05C	0.5-2.5	7,5	7,0	6,9	10,0	1,0	13,0
M5	8,5	CF85ACITTM05L	2.5-5.0	8,5	7,0	6,9	10,0	1,0	16,5
M6	15	CF85ACITTM06C	0.5-3.0	9,2	9,0	8,9	12.30(*13.0)	1,3	15,5
M6	15	CF85ACITTM06L	3.0-5.5	10,5	9,0	8,9	12.30(*13.0)	1,3	19,5
M8	26	CF85ACITTM08C	1.0-3.5	11,5	11,0	10,9	14.5(*16.0)	1,5	18,5
M8	26	CF85ACITTM08L	3.5-6.0	11,5	11,0	10,9	14.5(*16.0)	1,5	21,0
M10	50	CF85ACITTM10C13	1.0-4.0	13,5	13,0	12,9	17.0(*19.0)	1,7	21,5
M10	50	CF85ACITTM10L13	4.0-6.5	13,5	13,0	12,9	17.0(*19.0)	1,7	24,0
M10	50	CF85ACITTM10C12	1.0-3.5	11,0	12,0	11,9	16,0	1,6	19,0
M12	80	CF85ACITTM12C15	1.0-4.0	13,5	15,0	14,9	18,0	1,7	22,0
M12	80	CF85ACITTM12L15	4.0-6.5	14,0	15,0	14,9	18,0	1,7	25,0
M12	80	CF85ACITTM12C16	1.0-4.0	15,0	16,0	15,9	22,0	2,0	25,0
M12	80	CF85ACITTM12L16	3.5-6.0	16,0	16,0	15,9	22,0	2,0	28,0

CFACITTCG

TESTA TONDA CORPO CILINDRICO ZIGRINATO CHIUSO
FLAT HEAD KNURLED BODY CLOSE END

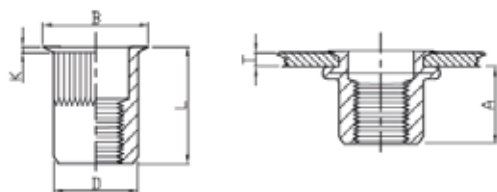


Unit: mm

FILETTO	TORSIONE Nm	CODICE	T (grip range) Min Max	A Ref	FORO +0.10	D +0.07 -0.1	B +/-0,3	K +/-0,2	L +/-0,3
M4	5	CF85ACITTCGM04C	0.5-2.0	11,3	6,0	5,9	9,0	0,8	16,0
M4	5	CF85ACITTCGM04L	2.0-4.0	11,3	6,0	5,9	9,0	0,8	18,0
M5	8,5	CF85ACITTCGM05C	0.5-3.0	11,5	7,0	6,9	10,0	1,0	17,0
M5	8,5	CF85ACITTCGM05L	3.0-5.0	11,5	7,0	6,9	10,0	1,0	19,0
M6	15	CF85ACITTCGM06C	0.5-3.0	12,7	9,0	8,9	12,3	1,3	19,2
M6	15	CF85ACITTCGM06L	3.0-5.0	12,7	9,0	8,9	12,3	1,3	21,0
M8	26	CF85ACITTCGM08C	1.0-3.0	14,8	11,0	10,9	15,0	1,50	21,5
M8	26	CF85ACITTCGM08L	3.0-6.0	14,8	11,0	10,9	15,0	1,50	24,0
M10	50	CF85ACITTCGM10C13	1.0-4.0	19,2	13,0	12,9	17,0	1,6	27,0

CFACITRG

TESTA RIDOTTA CORPO CILINDRICO ZIGRINATO
REDUCED HEAD KNURLED BODY

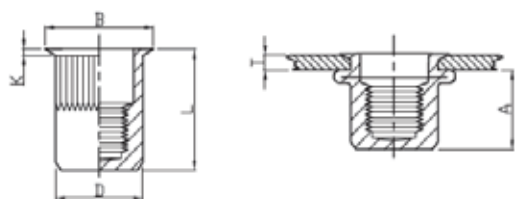


Unit: mm

FILETTO	TORSIONE Nm	CODICE	T (grip range) Min Max	A Ref	FORO +0.10	D +0.07 -0.1	B +/-0,3	K +/-0,2	L +/-0,3
M3	1	CF85ACITRGM03C	0.5-2.0	6,2	5,0	4,9	6,0	0,5	9,0
M3	1	CF85ACITRGM03L	1.5-3.0	6,2	5,0	4,9	6,0	0,5	11,5
M4	3	CF85ACITRGM04C	0.5-2.0	7,0	6,0	5,9	7,0	0,5	11,2
M4	3	CF85ACITRGM04L	2.0-4.0	7,0	6,0	5,9	7,0	0,5	13,0
M5	6	CF85ACITRGM05C	0.5-3.0	7,0	7,0	6,9	8,0	0,5	11,5
M5	6	CF85ACITRGM05L	3.0-4.0	7,0	7,0	6,9	8,0	0,5	13,0
M6	11	CF85ACITRGM06C	0.5-3.0	8,5	9,0	8,9	10,0	0,6	14,0
M6	11	CF85ACITRGM06L	3.0-5.0	8,5	9,0	8,9	10,0	0,6	16,0
M8	20	CF85ACITRGM08C	0.5-3.0	10,0	11,0	10,9	12,0	0,65	16,5
M8	20	CF85ACITRGM08L	3.0-5.0	10,0	11,0	10,9	12,0	0,65	18,5
M10	32	CF85ACITRGM10C13	1.0-3.5	12,5	13,0	12,9	14,0	0,7	19,5
M10	32	CF85ACITRGM10L13	3.5-6.0	12,5	13,0	12,9	14,0	0,7	22,0
M10	32	CF85ACITRGM10C12	1.0-3.5	12,5	12,0	11,9	13,0	0,7	19,5
M12	50	CF85ACITRGM12C15	1.0-3.5	15,2	15,0	14,9	16,5	0,85	22,5
M12	50	CF85ACITRGM12C16	1.0-4.0	16,2	16,0	15,9	17,5	0,86	24,2
M12	50	CF85ACITRGM12L16	4.0-6.5	16,2	16,0	15,9	17,5	0,80	27,5

CFACITRCG

TESTA RIDOTTA CORPO CILINDRICO ZIGRINATO CHIUSO
REDUCED HEAD KNURLED BODY CLOSE END

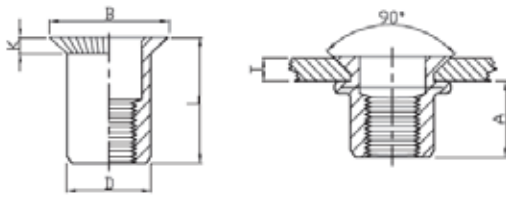


Unit: mm

FILETTO	TORSIONE Nm	CODICE	T (grip range) Min Max	A Ref	FORO +0.10	D +0.07 -0.1	B +/-0,3	K +/-0,2	L +/-0,3
M4	3	CF85ACITRCGM04C	0.5-2.0	11,0	6,0	5,9	7,0	0,5	15,0
M4	3	CF85ACITRCGM04L	2.0-3.5	11,0	6,0	5,9	7,0	0,5	16,5
M5	6	CF85ACITRCGM05C	0.5-2.0	12,5	7,0	6,9	8,0	0,5	16,5
M5	6	CF85ACITRCGM05L	2.0-3.5	12,5	7,0	6,9	8,0	0,5	18,0
M6	11	CF85ACITRCGM06C	0.5-3.0	15,5	9,0	8,9	10,0	0,6	20,5
M6	11	CF85ACITRCGM06L	3.0-4.5	15,5	9,0	8,9	10,0	0,6	22,0
M8	20	CF85ACITRCGM08C	0.5-3.0	17,0	11,0	10,9	12,0	0,65	23,0
M8	20	CF85ACITRCGM08L	3.0-4.5	17,0	11,0	10,9	12,0	0,65	24,5
M10	32	CF85ACITRCGM10C13	1.0-3.0	18,2	13,0	12,9	14,0	0,7	24,5
M10	32	CF85ACITRCGM10L13	3.0-5.0	18,2	13,0	12,9	14,0	0,7	26,0

CFACITS

TESTA SVASATA CORPO CILINDRICO LISCIO
COUNTERSUNK HEAD ROUND BODY PLAIN

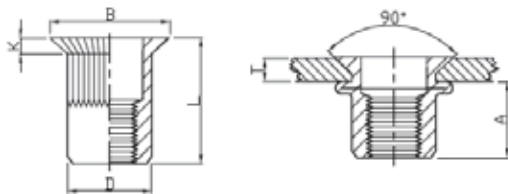


Unit: mm

FILETTO	TORSIONE Nm	CODICE	T (grip range) Min Max	A Ref	FORO +0.10	D +0.07 -0.1	B +/-0,3	K +/- 0,2	L +/- 0,3
M4	4	CF85ACITSM04C	1.5-3.0	6,5	6,0	5,9	9,0	1,5	12,0
M5	8	CF85ACITSM05C	1.5-3.5	7,5	7,0	6,9	10,0	1,5	13,0
M6	15	CF85ACITSM06C	1.5-4.0	9,0	9,0	8,9	12,0	1,5	15,5
M8	26	CF85ACITSM08C	2.0-4.5	11,0	11,0	10,9	14,0	1,5	18,5
M10	45	CF85ACITSM10C13	2.0-5.0	13,0	13,0	12,9	16,0	1,5	21,0

CFACITSG

TESTA SVASATA CORPO CILINDRICO ZIGRINATO
COUNTERSUNK HEAD KNURLED BODY

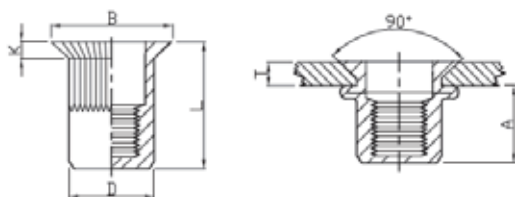


Unit: mm

FILETTO	TORSIONE Nm	CODICE	T (grip range) Min Max	A Ref	FORO +0.10	D +0.07 -0.1	B +/-0,3	K +/-0,2	L +/-0,3
M3	1	CF85ACITSGM03C	1.5-2.5	4,5	5,0	4,9	7,5	1,5	9,5
M4	4	CF85ACITSGM04C	1.5-3.0	6,5	6,0	5,9	9,0	1,5	12,0
M4	4	CF85ACITSGM04L	3.0-5.0	6,5	6,0	5,9	9,0	1,5	13,0
M5	8	CF85ACITSGM05C	1.5-3.5	7,5	7,0	6,9	10,0	1,5	13,0
M5	8	CF85ACITSGM05L	3.5-5.0	7,5	7,0	6,9	10,0	1,5	15,0
M6	15	CF85ACITSGM06C	1.5-4.0	9,0	9,0	8,9	12,0	1,5	15,5
M6	15	CF85ACITSGM06L	4.0-6.0	9,0	9,0	8,9	12,0	1,5	17,0
M8	26	CF85ACITSGM08C	2.0-4.5	11,0	11,0	10,9	14,0	1,5	18,5
M8	26	CF85ACITSGM08L	4.5-6.0	11,0	11,0	10,9	14,0	1,5	19,0
M10	45	CF85ACITSGM10C13	2.0-5.0	13,0	13,0	12,9	16,0	1,5	21,0
M10	45	CF85ACITSGM10L13	5.0-6.5	13,0	13,0	12,9	16,0	1,5	24,0
M12	70	CF85ACITSGM12C16	2.0-5.0	16,5	16,0	15,9	19,0	1,5	24,0
M12	70	CF85ACITSGM12L16	5.0-7.0	16,5	16,0	15,9	19,0	1,5	27,5

CFACITSCG

TESTA SVASATA CORPO CILINDRICO ZIGRINATO CHIUSO
COUNTERSUNK HEAD KNURLED BODY CLOSE END



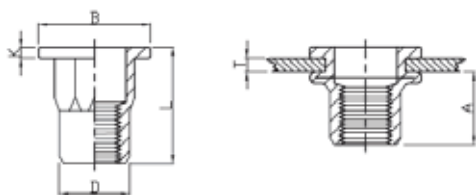
Unit: mm

(MATERIALE DISPONILE SOLO SU RICHIESTA / ONLY ON DEMAND)

FILETTO	TORSIONE Nm	CODICE	T (grip range) Min Max	A Ref	FORO +0.10	D +0.07 -0.1	B +/-0,3	K +/-0,2	L +/-0,3
M4	4	CF85ACITSCGM04C	1.5-3.0	12,3	6,0	5,9	9,0	1,5	17,5
M5	8	CF85ACITSCGM05C	1.5-3.5	14,0	7,0	6,9	10,0	1,5	19,5
M6	15	CF85ACITSCGM06C	1.5-4.0	17,5	9,0	8,9	12,0	1,5	23,5
M8	26	CF85ACITSCGM08C	1.5-4.0	20,0	11,0	10,9	14,0	1,5	26,5
M10	45	CF85ACITSCGM10C13	1.5-5.0	21,5	13,0	12,9	16,0	1,5	30,0

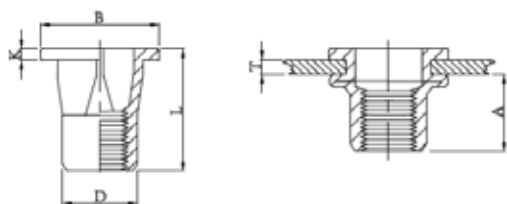
CFACITTSE

TESTA TONDA CORPO SEMI ESAGONALE
FLAT HEAD SEMI-HEX BODY



Unit: mm

FILETTO	TORSIONE Nm	CODICE	T (grip range) Min Max	A Ref	FORO +0.10	D +0.07 -0.1	B +/-0,3	K +/-0,2	L +/-0,3
M4	5	CF85ACITTSEM04C	0.5-2.0	6,5	6,0	5,9	9,0	0,8	11,0
M5	8,5	CF85ACITTSEM05C	0.5-2.5	8,0	7,0	6,9	10,0	1,0	13,0
M6	15	CF85ACITTSEM06C	0.5-3.0	8,5	9,0	8,9	12,7	1,35	15,0
M8	26	CF85ACITTSEM08C	1.0-3.5	10,5	11,0	10,9	16,0	1,5	18,0
M10	50	CF85ACITTSEM10C13	1.0-3.5	12,5	13,0	12,9	18,0	1,7	21,0
M10	50	CF85ACITTSEM10C12	1.0-3.5	11,0	12,0	11,9	17,0	1,6	19,0
M12	80	CF85ACITTSEM12C15	1.0-4.0	14,0	15,0	14,9	20,0	1,7	23,0
M12	80	CF85ACITTSEM12C16	2.0-5.0	16,5	16,0	15,9	23,0	2,2	27,5



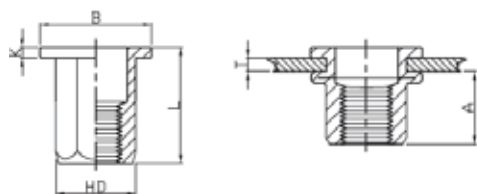
(MATERIALE DISPONIBILE SOLO SU RICHIESTA / ONLY ON DEMAND)

Unit: mm

FILETTO	TORSIONE Nm	CODICE	T (grip range) Min Max	A Ref	FORO +0.10	D +0.07 -0.1	B +/-0,3	K +/-0,2	L +/-0,3
M5	8,5	CF85ACITTQM05C	0.5-1.5	8	7,0	6,9	10,5	0,6	11,2
M5	8,5	CF85ACITTQM05L	1.5-3.0	8	7,0	6,9	10,5	0,6	12,7
M6	15	CF85ACITTQM06C	0.5-2.5	8,5	9,0	8,9	14,0	0,8	14,3
M6	15	CF85ACITTQM06L	2.5-4.0	9,5	9,0	8,9	14,0	0,8	17,2
M8	26	CF85ACITTQM08C	1.0-3.0	11,5	11,0	10,9	17,5	1,3	18,6

CFACITTE

TESTA TONDA CORPO ESAGONALE
FLAT HEAD FULL HEX BODY

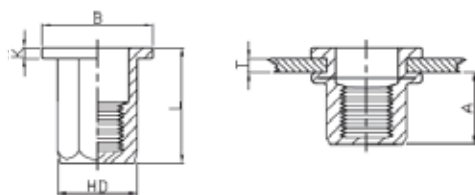


Unit: mm

FILETTO	TORSIONE Nm	CODICE	T (grip range) Min Max	A Ref	FORO +0.10	HD +0.07 -0.1	B +/-0,3	K +/-0,2	L +/-0,3
M3	2	CF85ACITTEM03C	0.5-2.0	5,0	5,0	5,0	7,0	0,8	8,8
M4	5	CF85ACITTEM04C	0.5-2.0	6,5	6,0	5,9	9,0	0,8	11,0
M4	5	CF85ACITTEM04L	2.0-4.0	6,5	6,0	5,9	9,0	0,8	13,0
M5	8,5	CF85ACITTEM05C	0.5-2.5	8,0	7,0	6,9	10,0	1,00	14,0
M5	8,5	CF85ACITTEM05L	2.5-5.0	8,0	7,0	6,9	10,0	1,00	16,5
M6	15	CF85ACITTEM06C	0.5-3.0	8,5	9,0	8,9	12.7(*13.0)	1,35	15.0(*16.0)
M6	15	CF85ACITTEM06L	3.0-5.5	8,5	9,0	8,9	13,0	1,35	19,5
M8	26	CF85ACITTEM08C	1.0-3.5	10,5	11,0	10,9	16,0	1,5	18,0
M8	26	CF85ACITTEM08L	3.0-5.5	10,5	11,0	10,9	16,0	1,5	21,0
M10	50	CF85ACITTEM10C13	1.0-3.5	12,5	13,0	12,9	18.0(*19.0)	1,7	21.0(*23.0)
M10	50	CF85ACITTEM10L13	3.5-6.0	12,5	13,0	12,9	19,0	1,7	24,0
M10	50	CF85ACITTEM10C12	1.0-3.5	13,5	12,0	11,9	18,0	1,7	21,0
M12	80	CF85ACITTEM12C15	1.0-4.0	14,0	15,0	14,9	20,0	1,7	23,0
M12	80	CF85ACITTEM12C16	2.0-5.0	16,5	16,0	15,9	23,0	2,0	27,0
M12	80	CF85ACITTEM12L16	5.0-8.0	16,5	16,0	15,9	23,0	2,0	30,0

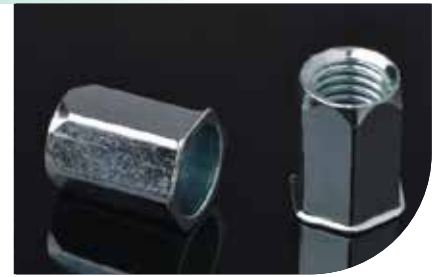
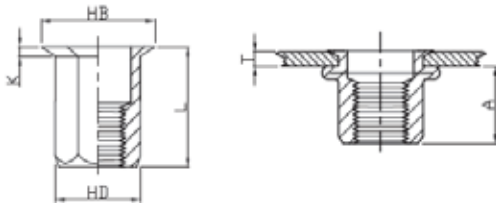
CFACITTEC

TESTA TONDA CORPO ESAGONALE CHIUSO
FLAT HEAD FULL HEX BODY CLOSE END



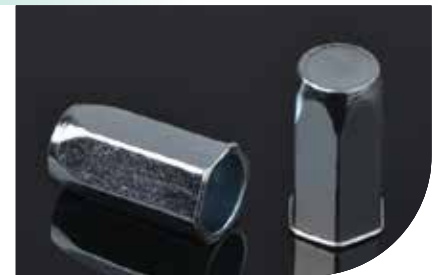
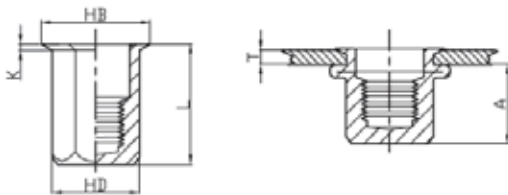
Unit: mm

FILETTO	TORSIONE Nm	CODICE	T (grip range) Min Max	A Ref	FORO +0.10	HD +0.07 -0.1	B +/-0,3	K +/-0,2	L +/-0,3
M4	5	CF85ACITTECM04C	0.5-2.0	11,0	6,0	5,9	9,0	1,0	15,0
M4	5	CF85ACITTECM04L	2.0-4.0	11,0	6,0	5,9	9,0	1,0	17,0
M5	8,5	CF85ACITTECM05C	0.5-2.5	13,5	7,0	6,9	10,0	1,0	18,0
M5	8,5	CF85ACITTECM05L	2.5-5.0	13,5	7,0	6,9	10,0	1,0	20,0
M6	15	CF85ACITTECM06C	0.5-3.0	17,0	9,0	8,9	12,7	1,5	23,0
M6	15	CF85ACITTECM06L	3.0-5.5	17,0	9,0	8,9	12,7	1,5	25,0
M8	26	CF85ACITTECM08C	1.0-3.5	19,0	11,0	10,9	16,0	1,5	26,0
M8	26	CF85ACITTECM08L	3.5-5.5	19,0	11,0	10,9	16,0	1,5	29,0
M10	50	CF85ACITTECM10C13	1.0-4.0	25,0	13,0	12,9	19,0	1,8	33,0
M10	50	CF85ACITTECM10L13	4.0-6.0	25,0	13,0	12,9	19,0	1,8	35,0



Unit: mm

FILETTO	TORSIONE Nm	CODICE	T (grip range) Min Max	A Ref	FORO +0.10	HD +0.07 -0.1	HB +/-0,3	K +/-0,2	L +/-0,3
M3	1	CF85ACIERM03C	0.5-1.5	5,5	5,0	4,9	6,0	0,5	8,5
M3	1	CF85ACIERM03L	1.5-3.0	5,5	5,0	4,9	6,0	0,5	10,5
M4	3	CF85ACIERM04C	0.5-2.5	6,7	6,0	5,9	7,0	0,5	11,0
M4	3	CF85ACIERM04L	2.5-5.0	6,7	6,0	5,9	7,0	0,5	13,5
M5	6	CF85ACIERM05C	0.5-3.0	9,0	7,0	6,9	8,0	0,60	14,5
M5	6	CF85ACIERM05L	3.0-5.0	9,0	7,0	6,9	8,0	0,60	16,0
M6	11	CF85ACIERM06C	1.0-3.5	10,0	9,0	8,9	10,0	0,6	16,0
M6	11	CF85ACIERM06L	3.5-6.0	10,0	9,0	8,9	10,0	0,6	18,0
M8	20	CF85ACIERM08C	1.0-4.0	11,5	11,0	10,9	12,0	0,70	18,0
M8	20	CF85ACIERM08L	4.0-6.0	11,5	11,0	10,9	12,0	0,70	20,0
M10	32	CF85ACIERM10C13	1.0-3.5	12,5	13,0	12,9	14,5	0,85	19,0
M10	32	CF85ACIERM10L13	3.5-6.0	14,5	13,0	12,9	14,5	0,85	23,5
M10	32	CF85ACIERM10C12	1.0-3.0	13,2	12,0	12,0	13,6	0,80	20,0
M12	50	CF85ACIERM12C15	1.0-4.0	14,0	15,0	14,9	16,9	0,80	25,5
M12	50	CF85ACIERM12C16	1.0-4.0	15,5	16,0	15,9	17,5	1,0	25,0
M12	50	CF85ACIERM12L16	4.0-7.0	15,5	16,0	15,9	17,5	1,0	28,0

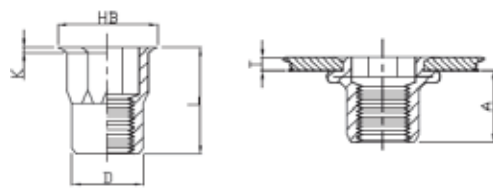


Unit: mm

FILETTO	TORSIONE Nm	CODICE	T (grip range) Min Max	A Ref	FORO +0.10	HD +0.07 -0.1	HB +/-0,3	K +/-0,2	L +/-0,3
M4	3	CF85ACIERCM04C	0.5-2.5	12,3	6,0	5,9	7,0	0,5	16,0
M4	3	CF85ACIERCM04L	2.5-4.0	12,3	6,0	5,9	7,0	0,5	18,0
M5	6	CF85ACIERCM05C	0.5-3.0	15,2	7,0	6,9	8,0	0,6	20,0
M5	6	CF85ACIERCM05L	3.0-5.0	15,2	7,0	6,9	8,0	0,6	23,0
M6	11	CF85ACIERCM06C	0.5-3.5	14,5	9,0	8,9	10,0	0,6	20,5
M6	11	CF85ACIERCM06L	3.5-5.5	14,5	9,0	8,9	10,0	0,6	23,5
M8	20	CF85ACIERCM08C	1.0-4.0	17,0	11,0	10,9	12,0	0,7	23,0
M8	20	CF85ACIERCM08L	4.0-6.0	17,0	11,0	10,9	12,0	0,7	25,0
M10	32	CF85ACIERCM10C13	1.0-4.0	20,0	13,0	12,9	14,5	0,85	28,5
M10	32	CF85ACIERCM10L13	4.0-6.0	20,0	13,0	12,9	14,5	0,85	30,5

CFACIERSE

TESTA RIDOTTA CORPO SEMI-ESAGONALE
REDUCED HEX HEAD INNER-HEX BODY

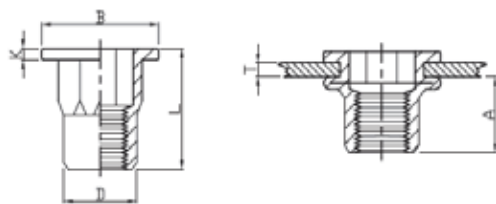


Unit: mm

FILETTO	TORSIONE Nm	CODICE	T (grip range) Min Max	A Ref	FORO +0.10	D +0.07 -0.1	HB +/-0,3	K +/-0,2	L +/-0,3
M3	1	CF85ACIERSEM03C	0.5-1.5	6,6	5,0	5,0	6,0	0,6	8,5
M4	3	CF85ACIERSEM04C	0.5-2.0	8,3	6,0	5,9	7,0	0,5	12,0
M5	6	CF85ACIERSEM05C	0.5-2.5	8,7	7,0	6,9	8,0	0,5	13,0
M6	11	CF85ACIERSEM06C	1.0-3.5	10,5	9,0	8,9	10,0	0,6	16,0
M8	20	CF85ACIERSEM08C	1.0-3.5	11,3	11,0	10,9	12,0	0,65	17,5
M10	32	CF85ACIERSEM10C13	1.0-4.0	12,8	13,0	12,9	14,5	0,75	21,0
M12	50	CF85ACIERSEM12C16	1.0-4.0	14,8	16,0	15,9	17,5	1,0	24,0

CFACITTSE

TESTA TONDA CORPO SEMI-ESAGONALE
FLAT HEAD INNER-HEX BODY



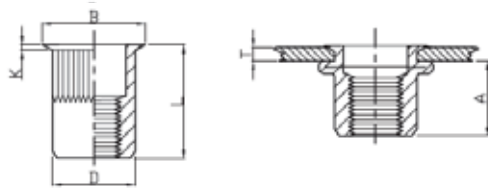
(MATERIALE DISPONIBILE SOLO SU RICHIESTA / ONLY ON DEMAND)

Unit: mm

FILETTO	TORSIONE Nm	CODICE	T (grip range) Min Max	A Ref	FORO +0.10	D +0.07 -0.1	B +/-0,3	K +/-0,2	L +/-0,3
M4	5	CF85ACITTSEM04C	0.5-2.0	7,0	6,0	5,9	9,0	0,8	11,0
M5	8,5	CF85ACITTSEM05C	0.5-2.5	7,5	7,0	6,9	10,0	1,0	12,0
M6	15	CF85ACITTSEM06C	0.5-3.0	9,2	9,0	8,9	12,7	1,35	15,5
M8	26	CF85ACITTSEM08C	1.0-3.5	11,2	11,0	10,9	16,0	1,5	18,0
M10	50	CF85ACITTSEM10C13	1.0-3.5	12,8	13,0	12,9	18,0	1,7	21,0

CFACITRGCP

TESTA RIDOTTA CORPO CILINDRICO ZIGRINATO FILETTO IN POLLICI
REDUCED HEAD KNURLED BODY



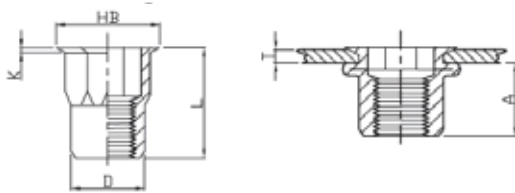
(MATERIALE DISPONIBILE SOLO SU RICHIESTA / ONLY ON DEMAND)

Unit: mm

FILETTO	TORSIONE Nm	CODICE	T (grip range) Min Max	A Ref	FORO +0.10	D ±0.05 (*+0.07-0.1)	B +/-0,3	K +/-0,2	L +/-0,3
M3	1	CF85ACITRGM03CP	0.5-1.5	5,5	4,8	4,65	5,4	0,4	9,0
M4	5	CF85ACITRGM04CP	0.5-2.0	6,5	6,5	6,35	7,0	0,5	10,5
M5	6	CF85ACITRGM05CP	0.5-2.5	7,5	7,25	7,15	7,85	0,5	12,0
M6	14	CF85ACITRGM06CP	1.0-3.0	9,2	9,6	9,45	10,3	0,6	15,0
M8	24	CF85ACITRGM08CP	1.0-3.5	10,5	10,6	10,45	11,3	0,6	16,0
M10	45	CF85ACITRGM10C13CP	1.0-4.0	12,8	12,8	12,65	13,8	0,65	20,0

CFACIERSECP

TESTA RIDOTTA CORPO SEMI-ESAGONALE FILETTO IN POLLICI
REDUCED HEX HEAD INNER-HEX BODY-UK

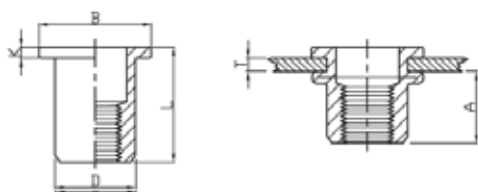


Unit: mm

FILETTO	TORSIONE Nm	CODICE	T (grip range) Min Max	A Ref	FORO +0.10	D ±0.05 (*±0.08)	HB +/-0,3	K +/-0,2	L +/-0,3
M4	3	CF85ACIERSEM04CP	0.5-2.0	6,5	6,4	6,25	7,25	0,5	10,5
M5	6	CF85ACIERSEM05CP	0.5-2.5	7,5	7,2	7,05	8,1	0,5	12,0
M6	11	CF85ACIERSEM06CP	1.0-3.0	9,2	9,6	9,45	10,5	0,6	15,0
M8	20	CF85ACIERSEM08CP	1.0-3.5	10,5	10,6	10,45	11,5	0,65	16,5

CFIXITT

TESTA TONDA CORPO CILINDRICO LISCIO IN ACCIAIO INOX
FLAT HEAD ROUND BODY PLAIN STAINLESS STEEL



INOX A2

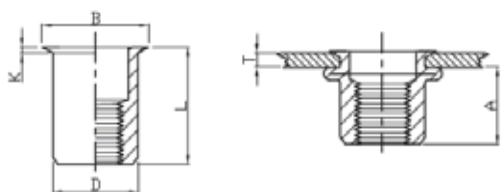


Unit: mm

FILETTO	TORSIONE Nm	CODICE	T (grip range) Min Max	A Ref	FORO +0.10	D +0.07 -0.1	B +/-0,3	K +/-0,2	L +/-0,3
M3	2	CF85IXITTM03C	0.5-2.0	4,5	5,0	4,9	7,0	0,8	8,8
M4	5	CF85IXITTM04C	0.5-2.0	6,0	6,0	5,9	9,0	0,8	10,8
M5	8,5	CF85IXITTM05C	0.5-2.5	7,0	7,0	6,9	10,0	1,0	13,0
M6	15	CF85IXITTM06C	0.5-3.0	8,5	9,0	8,9	13,0	1,5	15,0
M8	26	CF85IXITTM08C	0.5-3.5	11,0	11,0	10,9	15,0	1,5	18,0
M10	50	CF85IXITTM10C13	1.0-3.5	12,0	13,0	12,9	17,0	1,8	20,3
M12	80	CF85IXITTM12C16	1.0-3.5	16,0	16,0	15,9	19,0	1,8	22,0
M12	80	CF85IXITTM12C16	1.0-3.5	16,0	15,0	14,9	19,0	1,8	22,0

CFIXITR

TESTA RIDOTTA CORPO CILINDRICO LISCIO IN ACCIAIO INOX
REDUCE HEAD ROUND BODY PLAIN STAINLESS STEEL



INOX A2

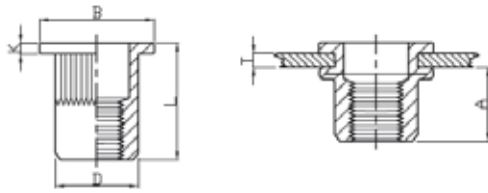


Unit: mm

FILETTO	TORSIONE Nm	CODICE	T (grip range) Min Max	A Ref	FORO +0.10	D +0.07 -0.1	B +/-0,3	K +/-0,2	L +/-0,3
M3	1	CF85IXITRM03C	0.5-1.5	5,0	5,0	4,9	5,5	0,35	8,5
M4	3	CF85IXITRM04C	0.5-1.5	5,5	6,0	5,9	7,0	0,50	10,0
M5	6	CF85IXITRM05C	0.5-2.0	6,0	7,0	6,9	8,0	0,60	12,0
M6	11	CF85IXITRM06C	0.5-3.0	9,0	9,0	8,9	10,0	0,60	14,5
M8	20	CF85IXITRM08C	0.5-3.5	10,0	11,0	10,9	12,3	0,60	16,5
M10	32	CF85IXITRM10C13	0.5-3.5	12,0	13,0	12,9	14,5	0,85	19,0
M12	32	CF85IXITRM12C15	0.5-3.5	14,5	15,0	14,9	16,5	0,85	22,5

CFIXITTG

TESTA TONDA CORPO CILINDRICO ZIGRINATO IN ACCIAIO INOX
FLAT HEAD KNURLED BODY STAINLESS STEEL



INOX A2/A4

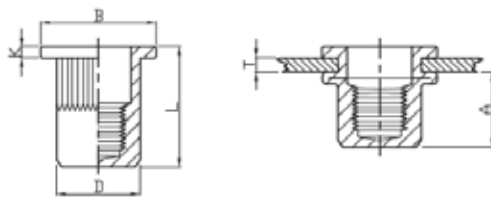


Unit: mm

FILETTO	TORSIONE Nm	CODICE	T (grip range) Min Max	A Ref	FORO +0.10	D +0.07 -0.1	B +/-0,3	K +/-0,2	L +/-0,3
M3	2	CF85IXITTM03C	0.5-2.0	4,5	5,0	5,0	7,0	0,8	8,8
M3	2	CF85IXITTM03L	2.0-3.0	6,2	5,0	4,9	7,0	0,8	10,5
M4	5	CF85IXITTM04C	0.5-2.0	6,5	6,0	5,9	9,0	0,8	10,5
M4	5	CF85IXITTM04L	2.0-4.0	6,5	6,0	5,9	9,0	0,8	13,0
M5	8,5	CF85IXITTM05C	0.5-2.5	8,0	7,0	6,9	10,0	1,0	13,0
M5	8,5	CF85IXITTM05L	2.5-4.5	8,0	7,0	6,9	10,0	1,0	16,5
M6	15	CF85IXITTM06C	0.5-3.0	9,2	9,0	8,9	12,3	1,3	15,5
M6	15	CF85IXITTM06L	3.5-5.0	9,2	9,0	8,9	12,3	1,3	19,5
M8	26	CF85IXITTM08C	1.0-3.5	11,5	11,0	10,9	14,5	1,5	18,5
M8	26	CF85IXITTM08L	3.5-6.0	11,5	11,0	10,9	14,5	1,5	20,0
M10	50	CF85IXITTM10C13	1.0-3.5	13,5	13,0	12,9	17,0	1,6	21,0
M10	50)	CF85IXITTM10L13	4.0-5.5	13,5	13,0	12,9	19,0	2,0	22,0
M10	50	CF85IXITTM10C12	0.8-3.5	11,0	12,0	11,9	16,0	1,7	19,0
M12	80	CF85IXITTM12C16	1.0-4.0	16,0	16,0	15,9	23,0	2,0	23,0
M12	80	CF85IXITTM12L16	3.5-5.5	18,0	16,0	15,9	19,0	1,8	24,3
M12	80	CF85IXITTM12C15	1.0-3.5	16,0	15,0	14,9	19,0	1,8	22,0
M12	80	CF85IXITTM12L15	3.5-5.5	18,0	15,0	14,9	19,0	1,8	24,3

CFIXITTCG

TESTA TONDA CORPO CILINDRICO ZIGRINATO CHIUSO ACCIAIO INOX
FLAT HEAD KNURLED BODY CLOSE END STAINLESS STEEL



INOX A2

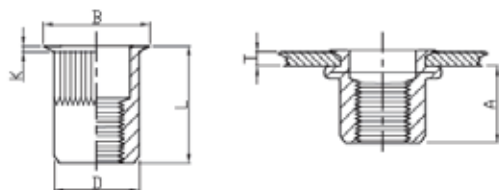


Unit: mm

FILETTO	TORSIONE Nm	CODICE	T (grip range) Min Max	A Ref	FORO +0.10	D +0.07 -0.1	B +/-0,3	K +/-0,2	L +/-0,3
M4	5	CF85IXITTCGM04C	0.5-2.0	11,8	6,0	5,9	9,0	0,8	16,0
M4	5	CF85IXITTCGM04L	1.0-2.5	11,8	6,0	5,9	9,0	0,8	18,0
M5	8,5	CF85IXITTCGM05C	0.5-2.5	12,0	7,0	6,9	10,0	1,0	17,0
M5	8,5	CF85IXITTCGM05L	2.5-4.0	12,0	7,0	6,9	10,0	1,0	19,0
M6	15	CF85IXITTCGM06C	0.5-3.0	12,7	9,0	8,9	13,0	1,5	19,2
M6	15	CF85IXITTCGM06L	3.0-5.5	12,7	9,0	8,9	13,0	1,5	21,0
M8	26	CF85IXITTCGM08C	0.5-3.5	14,2	11,0	10,9	15,0	1,5	21,5
M8	26	CF85IXITTCGM08L	3.5-6.0	14,2	11,0	10,9	15,0	1,5	24,0
M10	50	CF85IXITTCGM10C13	0.5-3.5	18,0	13,0	12,9	17,0	1,8	27,0
M10	50	CF85IXITTCGM10L13	3.5-6.0	18,0	13,0	12,9	17,0	1,8	34,3
M12	80	CF85IXITTCGM12C16	0.5-3.0	29,5	16,0	15,9	23,0	2,0	39,0

CFIXITRG

TESTA RIDOTTA CORPO CILINDRICO ZIGRINATO IN ACCIAIO INOX
REDUCE HEAD KNURLED BODY STAINLESS STEEL



INOX A2/A4

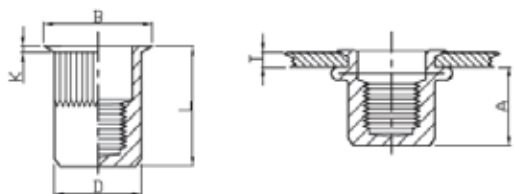


Unit: mm

FILETTO	TORSIONE Nm	CODICE	T (grip range) Min Max	A Ref	FORO +0.10	D +0.07 -0.1	B +/-0,3	K +/-0,2	L +/-0,3
M3	1	CF85IXITRGM03C	0.5-1.5	6,8	5,0	5,0	6,0	0,60	8,5
M3	1	CF85IXITRGM03L	1.5-2.5	6,0	5,0	4,9	5,5	0,35	9,5
M4	3	CF85IXITRGM04C	0.5-2.0	6,5	6,0	5,9	7,0	0,50	10,5
M4	3	CF85IXITRGM04L	2.0-4.0	6,5	6,0	5,9	7,0	0,50	13,0
M5	6	CF85IXITRGM05C	0.5-2.0	7,2	7,0	6,9	8,0	0,50	11,5
M5	6	CF85IXITRGM05L	2.0-4.0	7,2	7,0	6,9	8,0	0,50	13,0
M6	11	CF85IXITRGM06C	0.5-2.5	8,7	9,0	8,9	10,0	0,60	14,0
M6	11	CF85IXITRGM06L	3.0-4.5	8,7	9,0	8,9	10,0	0,60	17,5
M8	20	CF85IXITRGM08C	0.5-3.0	10,5	11,0	10,9	12,0	0,65	16,5
M8	20	CF85IXITRGM08L	3.0-5.0	10,5	11,0	10,9	12,0	0,65	18,5
M10	32	CF85IXITRGM10C13	1.0-3.5	10,7	13,0	12,9	14,0	0,70	17,7
M10	32	CF85IXITRGM10L13	1.0-3.5	10,7	12,0	11,9	13,0	0,70	17,7
M12	50	CF85IXITRGM12C16	1.0-3.5	16,0	16,0	15,9	17,6	0,75	24,2

CFIXITRCG

TESTA RIDOTTA CORPO CILINDRICO ZIGRINATO CHIUSO IN ACCIAIO INOX
REDUCE HEAD KNURLED BODY CLOSE END STAINLESS STEEL

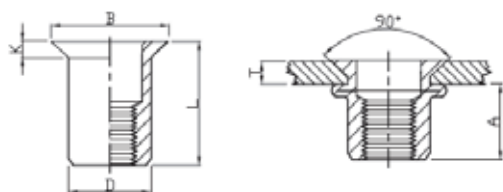


INOX A2



Unit: mm

FILETTO	TORSIONE Nm	CODICE	T (grip range) Min Max	A Ref	FORO +0.10	D +0.07 -0.1	B +/-0,3	K +/-0,2	L +/-0,3
M3	1	CF85IXITRCGM03C	0.5-1.5	10,5	5,0	4,9	6,0	0,50	11,0
M3	1	CF85IXITRCGM03L	1.5-2.5	10,5	5,0	4,9	6,0	0,50	13,0
M4	3	CF85IXITRCGM04C	0.5-2.0	11,0	6,0	5,9	7,0	0,50	15,0
M4	3	CF85IXITRCGM04L	2.0-4.0	11,0	6,0	5,9	7,0	0,50	16,5
M5	6	CF85IXITRCGM05C	0.5-2.5	12,5	7,0	6,9	8,0	0,60	16,5
M5	6	CF85IXITRCGM05L	2.5-4.5	12,5	7,0	6,9	8,0	0,60	18,0
M6	11	CF85IXITRCGM06C	0.5-3.0	15,5	9,0	8,9	10,0	0,60	20,5
M6	11	CF85IXITRCGM06L	3.0-4.5	15,5	9,0	8,9	10,0	0,60	22,0
M8	20	CF85IXITRCGM08C	0.5-3.5	17,0	11,0	10,9	12,3	0,60	23,0
M8	20	CF85IXITRCGM08L	3.0-4.5	17,0	11,0	10,9	12,3	0,60	24,5
M10	32	CF85IXITRCGM10C13	0.5-3.5	18,2	13,0	12,9	14,5	0,85	24,5
M10	32	CF85IXITRCGM10L13	3.0-5.0	18,2	13,0	12,9	14,5	0,85	26,0
M12	50	CF85IXITRCGM12C15	2.0-4.0	20,0	15,0	14,9	16,5	0,85	28,0



INOX A2



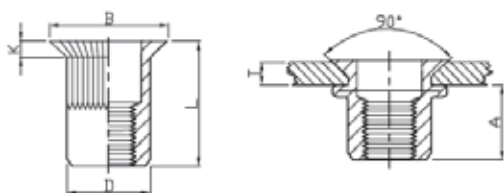
(MATERIALE DISPONIBILE SOLO SU RICHIESTA / ONLY ON DEMAND)

Unit: mm

FILETTO	TORSIONE Nm	CODICE	T (grip range) Min Max	A Ref	FORO +0.10	D +0.07 -0.1	B +/-0,3	K +/-0,2	L +/-0,3
M3	1	CF85IXITSM03C	1.5-3.0	5,0	5,0	4,9	7,8	1,5	9,5
M4	4	CF85IXITSM04C	1.5-3.0	6,0	6,0	5,9	9,0	1,5	11,0
M5	8	CF85IXITSM05C	1.5-3.5	8,0	7,0	6,9	10,0	1,5	14,0
M6	15	CF85IXITSM06C	1.5-4.0	9,0	9,0	8,9	12,0	1,5	15,0
M8	26	CF85IXITSM08C	1.5-4.5	10,0	11,0	10,9	14,0	1,5	16,5
M10	45	CF85IXITSM10C13	1.5-4.5	11,0	13,0	12,9	16,0	1,7	19,0
M12	65	CF85IXITSM12C15	1.5-5.0	13,5	15,0	14,9	18,0	1,8	22,5

CFIXITSG

TESTA SVASATA CORPO CILINDRICO ZIGRINATO IN ACCIAIO INOX
COUNTERSUNK HEAD KNURLED BODY STAINLESS STEEL



INOX A2

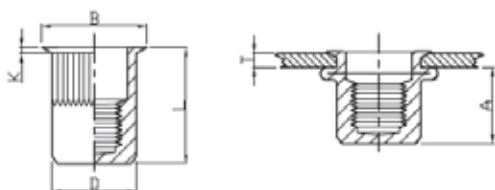


Unit: mm

FILETTO	TORSIONE Nm	CODICE	T (grip range) Min Max	A Ref	FORO +0.10	D +0.07 -0.1	B +/-0,3	K +/-0,2	L +/-0,3
M3	1	CF85IXITSGM03C	1.0-2.0	5,0	5,0	4,9	7,8	1,5	9,5
M3	1	CF85IXITSGM03L	2.0-3.0	6,0	5,0	4,9	7,8	1,5	10,5
M4	4	CF85IXITSGM04C	1.5-3.5	7,5	6,0	5,9	9,0	1,5	12,0
M4	4	CF85IXITSGM04L	3.5-5.0	8,0	6,0	5,9	9,0	1,5	13,0
M5	8	CF85IXITSGM05C	1.5-3.5	7,8	7,0	6,9	10,0	1,5	13,0
M5	8	CF85IXITSGM05L	3.5-5.0	9,0	7,0	6,9	10,0	1,5	15,0
M6	15	CF85IXITSGM06C	1.5-4.0	9,0	9,0	8,9	12,0	1,5	15,5
M6	15	CF85IXITSGM06L	4.0-6.0	11,0	9,0	8,9	12,0	1,5	17,0
M8	26	CF85IXITSGM08C	2.0-4.5	12,0	11,0	10,9	14,0	1,5	18,5
M8	26	CF85IXITSGM08L	3.5-6.5	12,5	11,0	10,9	14,0	1,5	21,0
M10	45	CF85IXITSGM10C13	2.0-5.0	13,0	13,0	12,9	16,0	1,5	21,0
M10	45	CF85IXITSGM10L13	4.5-6.0	12,5	13,0	12,9	16,0	1,7	20,5
M12	50	CF85IXITSGM12C15	1.6-5.0	13,5	15,0	14,9	18,0	1,8	22,5

CFIXITSCG

TESTA SVASATA CORPO CILINDRICO ZIGRINATO CIECO IN ACCIAIO INOX
COUNTERSUNK HEAD KNURLED BODY CLOSE END STAINLESS STEEL



INOX A2



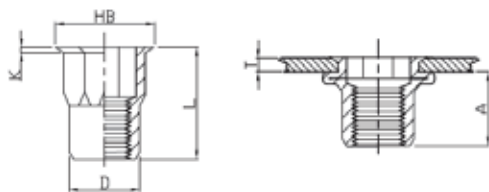
(MATERIALE DISPONIBILE SOLO SU RICHIESTA / ONLY ON DEMAND)

Unit: mm

FILETTO	TORSIONE Nm	CODICE	T (grip range) Min Max	A Ref	FORO +0.10	D +0.07 -0.1	B +/-0,3	K +/-0,2	L +/-0,3
M4	3	CF85IXITSCGM04C	1.6-3.5	12,3	6,0	5,9	9,0	1,5	17,3
M5	6	CF85IXITSCGM05C	1.6-3.5	13,5	7,0	6,9	10,0	1,5	19,5
M6	11	CF85IXITSCGM06C	1.6-4.0	17,5	9,0	8,9	12,0	1,5	23,5
M8	20	CF85IXITSCGM08C	1.6-4.5	20,0	11,0	10,9	14,0	1,5	26,5
M10	32	CF85IXITSCGM10C13	1.6-5.0	25,5	13,0	12,9	16,0	1,7	33,0
M12	50	CF85IXITSCGM12C16	1.6-3.5	29,5	16,0	15,9	19,0	1,8	38,0

CFIXIERSE

TESTA RIDOTTA CORPO SEMI-ESAGONALE IN ACCIAIO INOX
REDUCE HEX HEAD INNER-HEX BODY STAINLESS STEEL



INOX A2/A4

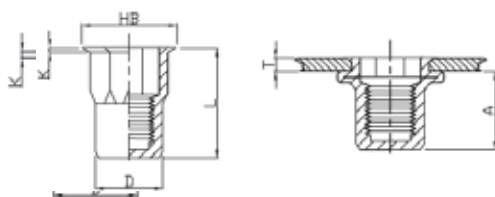


Unit: mm

FILETTO	TORSIONE Nm	CODICE	T (grip range) Min Max	A Ref	FORO +0.10	D +0.07 -0.1	HB +/-0,3	K +/-0,2	L +/-0,3
M3	1	CF85IXIERSEM03C	0.5-1.5	5,5	5,0	4,9	6,0	0,5	9,0
M3	1	CF85IXIERSEM03L	1.5-2.5	5,5	5,0	4,9	6,0	0,5	11,0
M4	3	CF85IXIERSEM04C	0.5-2.0	8,0	6,0	5,9	7,0	0,5	12,0
M4	3	CF85IXIERSEM04L	2.0-4.0	8,0	6,0	5,9	7,0	0,5	14,0
M5	6	CF85IXIERSEM05C	0.5-2.5	8,2	7,0	6,9	8,0	0,5	13,0
M5	6	CF85IXIERSEM05L	2.5-4.0	8,2	7,0	6,9	8,0	0,5	15,0
M6	11	CF85IXIERSEM06C	1.0-3.0	10,7	9,0	8,9	10,0	0,6	16,0
M6	11	CF85IXIERSEM06L	3.0-5.0	10,7	9,0	8,9	10,0	0,6	18,0
M8	20	CF85IXIERSEM08C	1.0-3.5	11,2	11,0	10,9	12,0	0,65	17,5
M8	20	CF85IXIERSEM08L	3.5-5.0	11,2	11,0	10,9	12,0	0,65	19,5
M10	32	CF85IXIERSEM10C13	1.0-4.0	13,5	13,0	12,9	14,5	0,75	21,0
M10	32	CF85IXIERSEM10C12	1.0-4.0	13,5	12,0	11,9	13,0	0,8	18,0
M10	32	CF85IXIERSEM10C13	4.0-5.5	13,5	13,0	12,9	14,5	0,75	23,0
M12	50	CF85IXIERSEM12C16	1.0-4.0	14,8	16,0	15,9	17,5	0,8	24,0
M12	50	CF85IXIERSEM12L16	4.0-6.0	14,8	16,0	15,9	17,5	0,8	27,0

CFIXIERSEC

TESTA RIDOTTA CORPO SEMI-ESAGONALE IN ACCIAIO INOX CHIUSI
REDUCE HEAD INNER-HEX BODY CLOSE END STAINLESS STEEL



INOX A2/A4

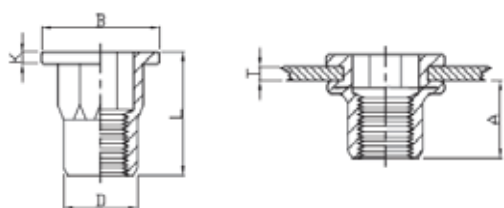


Unit: mm

FILETTO	TORSIONE Nm	CODICE	T (grip range) Min Max	A Ref	FORO +0.10	D +0.07 -0.1	HB +/-0,3	K +/-0,2	L +/-0,3
M3	1	CF85IXIERSECM03C	0.5-1.5	9,5	5,0	4,9	6,0	0,5	13,0
M3	1	CF85IXIERSECM03L	1.5-2.5	9,5	5,0	4,9	6,0	0,5	15,0
M4	3	CF85IXIERSECM04C	0.5-2.0	11,5	6,0	5,9	7,0	0,5	15,5
M4	3	CF85IXIERSECM04L	2.0-4.0	11,5	6,0	5,9	7,0	0,5	17,5
M5	6	CF85IXIERSECM05C	0.5-2.5	13,5	7,0	6,9	8,0	0,5	18,0
M5	6	CF85IXIERSECM05L	2.5-4.0	13,5	7,0	6,9	8,0	0,6	20,0
M6	11	CF85IXIERSECM06C	0.5-3.0	15,8	9,0	8,9	10,0	0,6	21,5
M6	11	CF85IXIERSECM06L	3.0-5.0	15,8	9,0	8,9	10,0	0,6	23,0
M8	20	CF85IXIERSECM08C	1.0-3.5	18,2	11,0	10,9	12,0	0,7	24,0
M8	20	CF85IXIERSECM08L	3.5-5.5	18,2	11,0	10,9	12,0	0,65	26,0
M10	32	CF85IXIERSECM10C13	1.0-4.0	23,2	13,0	12,9	14,5	0,80	30,5
M10	32	CF85IXIERSECM10L13	4.0-5.5	23,2	13,0	12,9	14,5	0,9	33,0

CFIXITTSE

TESTA TONDA CORPO SEMI-ESAGONALE IN ACCIAIO INOX
FLAT HEAD INNER-HEX BODY STAINLESS STEEL



INOX A2/A4

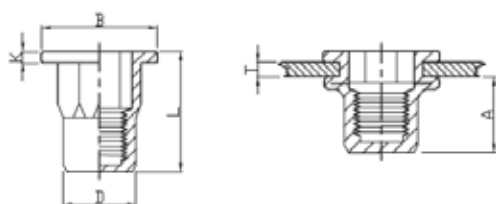


Unit: mm

FILETTO	TORSIONE Nm	CODICE	T (grip range) Min Max	A Ref	FORO +0.10	D +0.07 -0.1	B +/-0,3	K +/-0,2	L +/-0,3
M3	2	CF85IXITTSEM03C	0.5-1.5	6,6	5,0	4,9	6,0	0,6	8,5
M4	5	CF85IXITTSEM04C	0.5-2.0	7,2	6,0	5,9	9,0	0,8	11,0
M4	5	CF85IXITTSEM04L	2.5-3.5	8,2	6,0	5,9	9,0	0,8	13,0
M5	8,5	CF85IXITTSEM05C	0.5-2.5	7,5	7,0	6,9	10,0	1,0	12,0
M5	8,5	CF85IXITTSEM04L	2.5-3.5	9,5	7,0	6,9	10,0	1,0	14,5
M6	15	CF85IXITTSEM06C	0.5-3.0	9,2	9,0	8,9	12,7	1,3	15,5
M6	15	CF85IXITTSEM06L	3.5-5.0	12,2	9,0	8,9	13,0	1,5	19,0
M8	26	CF85IXITTSEM08C	1.0-3.5	11,0	11,0	10,9	16,0	1,5	18,0
M8	26	CF85IXITTSEM08L	3.5-5.0	12,0	11,0	10,9	15,0	1,5	19,0
M10	50	CF85IXITTSEM10C13	1.0-4.0	13,2	13,0	12,9	18,0	1,7	21,0
M10	50	CF85IXITTSEM10L13	3.5-5.0	14,2	13,0	12,9	17,0	1,8	22,0
M12	80	CF85IXITTSEM12C16	2.5-5.0	16,0	16,0	15,9	23,0	2,0	25,0

CFIXITTSEC

TESTA TONDA CORPO SEMI-ESAGONALE CHIUSO ACCIAIO INOX
FLAT HEAD INNER-HEX BODY CLOSE END STAINLESS STEEL

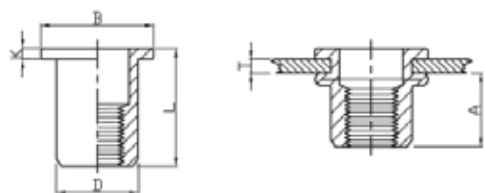


INOX A2/A4



Unit: mm

FILETTO	TORSIONE Nm	CODICE	T (grip range) Min Max	A Ref	FORO +0.10	D +0.07 -0.1	B +/-0,3	K +/-0,2	L +/-0,3
M4	5	CF85IXITTSECM04C	0.5-2.0	11,5	6,0	5,9	9,0	1,0	16,0
M5	8,5	CF85IXITTSECM05C	0.5-2.5	13,5	7,0	6,9	10,0	1,0	18,5
M6	15	CF85IXITTSECM06C	0.5-3.0	17,5	9,0	8,9	12,7	1,5	23,0
M8	26	CF85IXITTSECM08C	1.0-3.5	18,2	11,0	10,9	16,0	1,5	25,0
M10	50	CF85IXITTSECM10C13	1.0-4.0	25,0	13,0	12,9	19,0	1,7	33,0

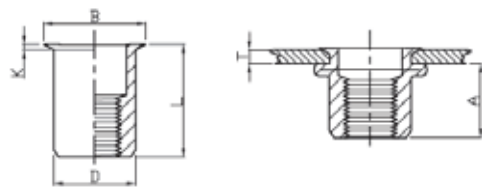


ALLUMINIO
Al Mg 2,5



Unit: mm

THREAD	P/N	LD P/N	T (grip range) Min Max	A Ref	FORO +0.10	D +0.07 -0.1	B	K	L
M3	0,7	CF85ALITTM03C	0.5-1.5	5,5	5,0	4,9	8,0	0,75	9,0
M4	2,5	CF85ALITTM04C	0.5-2.0	6,0	6,0	5,9	8,8	0,8	10,5
M5	5	CF85ALITTM05C	0.5-2.5	7,5	7,0	6,9	10,0	1,0	13,0
M6	8	CF85ALITTM06C	0.5-2.5	9,2	9,0	8,9	12,3	1,5	15,0
M8	20	CF85ALITTM08C	1.0-3.0	10,2	11,0	10,9	14,3	1,5	16,5
M10	25	CF85ALITTM10C13	1.0-4.0	11,5	13,0	12,9	16,3	1,6	19,0

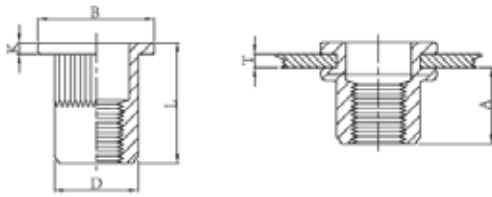


ALLUMINIO
Al Mg 2,5



Unit: mm

FILETTO	TORSIONE Nm	CODICE	T (grip range) Min Max	A Ref	FORO +0.10	D +0.07 -0.1	B	K	L
M3	0,7	CF85ALITRM03C	0.5-1.5	5,5	5,0	4,9	5,6	0,35	8,5
M4	2,5	CF85ALITRM04C	0.5-2.0	6,0	6,0	5,9	7,0	0,5	10,5
M5	5	CF85ALITRM05C	0.5-2.0	7,5	7,0	6,9	8,0	0,5	11,5
M6	8	CF85ALITRM06C	0.5-2.5	9,2	9,0	8,9	10,0	0,6	14,0
M8	20	CF85ALITRM08C	0.5-2.5	10,2	11,0	10,9	12,0	0,65	15,5
M10	25	CF85ALITRM10C13	1.0-3.0	11,5	13,0	12,9	14,1	0,7	17,7



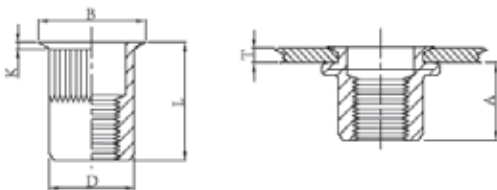
ALLUMINIO
Al Mg 2,5



(MATERIALE DISPONILE SOLO SU RICHIESTA / ONLY ON DEMAND)

Unit: mm

FILETTO	TORSIONE Nm	CODICE	T (grip range) Min Max	A Ref	FORO +0.10	D +0.07 -0.1	B +/-0,3	K +/-0,2	L +/-0,3
M4	2,5	CF85ALITTGM04C	0.5-2.0	6,0	6,0	5,9	8,8	0,8	10,5
M5	5	CF85ALITTGM05C	0.5-2.5	7,5	7,0	6,9	10,0	1,0	13,0
M6	8	CF85ALITTGM06C	0.5-2.5	9,2	9,0	8,9	12,3	1,5	15,0
M8	20	CF85ALITTM08C	1.0-3.0	10,2	11,0	10,9	14,3	1,5	16,5
M10	25	CF85ALITT10C13	1.0-4.0	11,5	13,0	12,9	16,3	1,6	19,0



ALLUMINIO
Al Mg 2,5



(MATERIALE DISPONILE SOLO SU RICHIESTA / ONLY ON DEMAND)

Unit: mm

FILETTO	TORSIONE Nm	CODICE	T (grip range) Min Max	A Ref	FORO +0.10	D +0.07 -0.1	B +/-0,3	K +/-0,2	L +/-0,3
M4	2,5	CF85ALITRGM04C	0.5-2.0	6,0	6,0	5,9	7,0	0,5	10,5
M5	5	CF85ALITRGM05C	0.5-2.0	7,5	7,0	6,9	8,0	0,5	11,5
M6	8	CF85ALITRGM06C	0.5-2.5	9,2	9,0	8,9	10,0	0,6	14,0
M8	20	CF85ALITRGM08C	0.5-2.5	10,2	11,0	10,9	12,0	0,65	15,5
M10	25	CF85ALITRGM10C13	1.0-3.0	11,5	13,0	12,9	14,1	0,7	17,7

DA 30 ANNI
AL FIANCO DI CHI USA FASTENERS



Via delle Gallarane, 10/12 | 22046 Merone (CO)

Tel. 031 3333486 | Fax 031 3339064

C.F. | P.IVA 03228940130

www.carusofasteners.it | info@carusofasteners.it