

APPLICATION FIELDS

A GREAT CERTAINTY AS COMMON BASEGROUND

From automotive to food, ISB supports middle and larger firms and companies, studying **products and solutions for every specific need**. Thanks to a consulting approach and to a **one-to-one technical support**, our company can guarantee the results certainty and a total involvement, throughout design, realization and assistance. Thus, year after year, national and international leader companies from the most various industrial sectors keep deciding to choose and trust us.

MAIN SECTORS:

- Agriculture
- Automation
- Automotive

- Electronic
- Medical
- Hydraulic

- Pneumatic
- Transmission

MATERIALS

ISB uses materials characterized by a high quality and reliability and wholly respecting the reference standards.

All parts can be supplied with different coatings, among the others: rust preventing coatings, zinc coating, Dacromet®, Geomet®, phosphate coating and painting.

TYPE	QUALITY	STANDARD	GRADES	DESCRIPTION
Wire	Carbon Steel	EN 10270-1	SM - SH - DH All grades with precoated surface	PATENED COLD DRAWN UNALLOYED STEEL SPRING WIRE
Wire	Oil Tempered Steel	EN 10270-2	FD - TD - VD (SiCr - SiCrV)	OIL HARDENED AND TEMPERED SPRING STEEL WIRE
Wire	Stainless Steel	EN 10270-3	1.4310 (302) - 1.4401(318) - 1.4568 (17.7PH) - 1.4462 (DUPLEX)	STAINLESS SPRING STEEL WIRE
Strips	Carbon Steel	EN 10132-4	C67S - C75S - C98S - C100S 51CrV4 - 102Cr6	COLD ROLLED NARROW STEEL SPRING FOR HEAT TREATMENT
Strips	Low Carbon Steel	EN 10139	DC01 - DC03 - DC04 - DC05 - DC06	COLD ROLLED UNCOATED MILD STEEL NARROW FOR COLD FORMING
Strips	Carbon Steel	EN 10149-2	S315 -355 - 420 - 470..	HOT ROLLED FLAT PRODUCTS MADE OF HIGH YELD STRENGHT STEEL FOR COLD FORMING
Strips	Low Carbon Steel	EN 10111	DD11 - DD12 DD15 - DD14	CONTINUOUSLY HOT ROLLED LOW CARBON STEEL SHEET AND STRIP FOR COLD FORMING
Strips	Pre Coated Carbon Steel	EN10152	DC0X + ZEY	ELECTROLYTICALLY ZINC COATED COLD ROLLED STEEL FLAT PRODUCTS FOR COLD FORMING
Strips	Stainless Steel	EN 10088		ALL STAINLESS STEELS
Wire and Strips	Bronze - Brass - Alluminium - Copper	Others	Various	



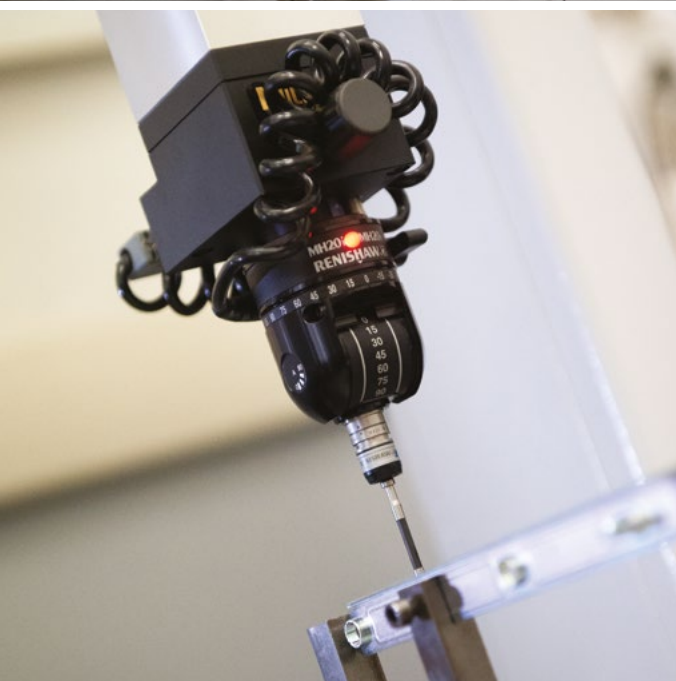
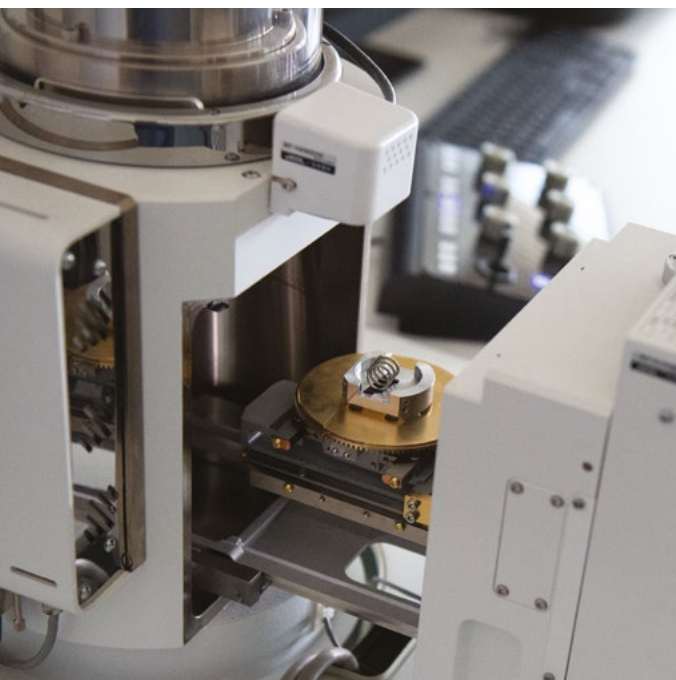
Via G. Masina, 3  
40013 Castel Maggiore (BO) Italy  
Phone +39 051 6323501  
Fax +39 051 6323502  
[www.mollificioisb.it](http://www.mollificioisb.it)  
[info@mollificioisb.it](mailto:info@mollificioisb.it)



MANY SOLUTIONS, JUST ONE PARTNER



## ISB. A FAMILY PASSION



In 1954 ISB was founded by Francesco Silvestri in Bologna. During the years, the company grows in size and in knowledge, affirming its primary vocation: be more than just a supplier, becoming a **reliable and complete partner** which can provide on-demand solutions specifically for each industrial sector.

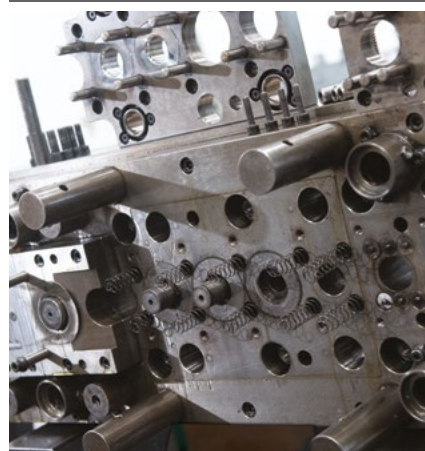
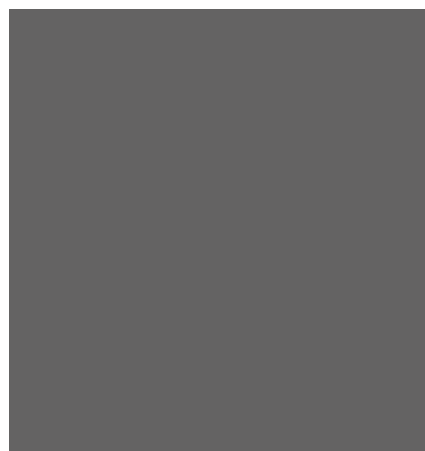
**After more than 60 years**, ISB endures in its vision, complementing excellence in products with focus on the service.

### MANY SOLUTIONS, JUST ONE PARTNER

**COMPLETE:** We meet the customers' needs, thanks to a wide range of tailored made products like springs, blanked metal parts and assemblies.

**NEAR:** Near the customer for the entire product life. From the initial technical assistance R&D, and up to after sales support.

**INNOVATIVE:** Research and development, to provide the best solutions with the most advanced measurement and analysis tools.



## OUR PRODUCTS

ISB delivers the best technical standards meeting the highest performance demands from the most competitive markets. Our wide range of solutions allows our clients to rely on just one partner for various families of products, e.g. springs, blanked metal parts and assemblies.

Many solutions, in name of a quality in which a long-time experience joins a state of the art technology and an integral attention. Deep control of the production process guarantees excellence in the result: ISB handles every step from tool design and engineering, up to co-design, simulation and fatigue tests.

### FOCUS ON PRODUCTION RANGE:

- |                       |                             |                            |
|-----------------------|-----------------------------|----------------------------|
| ✓ Round wire springs: | ✓ Wave Springs              | ✓ Fasteners and electrical |
| ✓ Compression         | ✓ Belleville Washers        | contatcs                   |
| ✓ Extension           | ✓ Bent & cold punched parts |                            |
| ✓ Torsion             | ✓ Assembled parts           |                            |
| ✓ Double torsion      | ✓ Retainers                 |                            |

## TECHNOLOGY

### ALL THE NUMBERS OF PERFORMANCE

Who chooses ISB can count on the high know-how of our designers and technicians and on the most state of art and reliable tools.

## EXCELLENCE UNDER CONTROL

Every ISB product **undergoes the most meticulous and strictest tests**, starting from fatigue life test through Goodman diagram and ending to empirical accelerated proofs.

Moreover, ISB has recently introduced the **SEM (Scanning Electron Microscope)**, the most up-to-date technology for the quality material testing and for the analysis of possible problems on products.