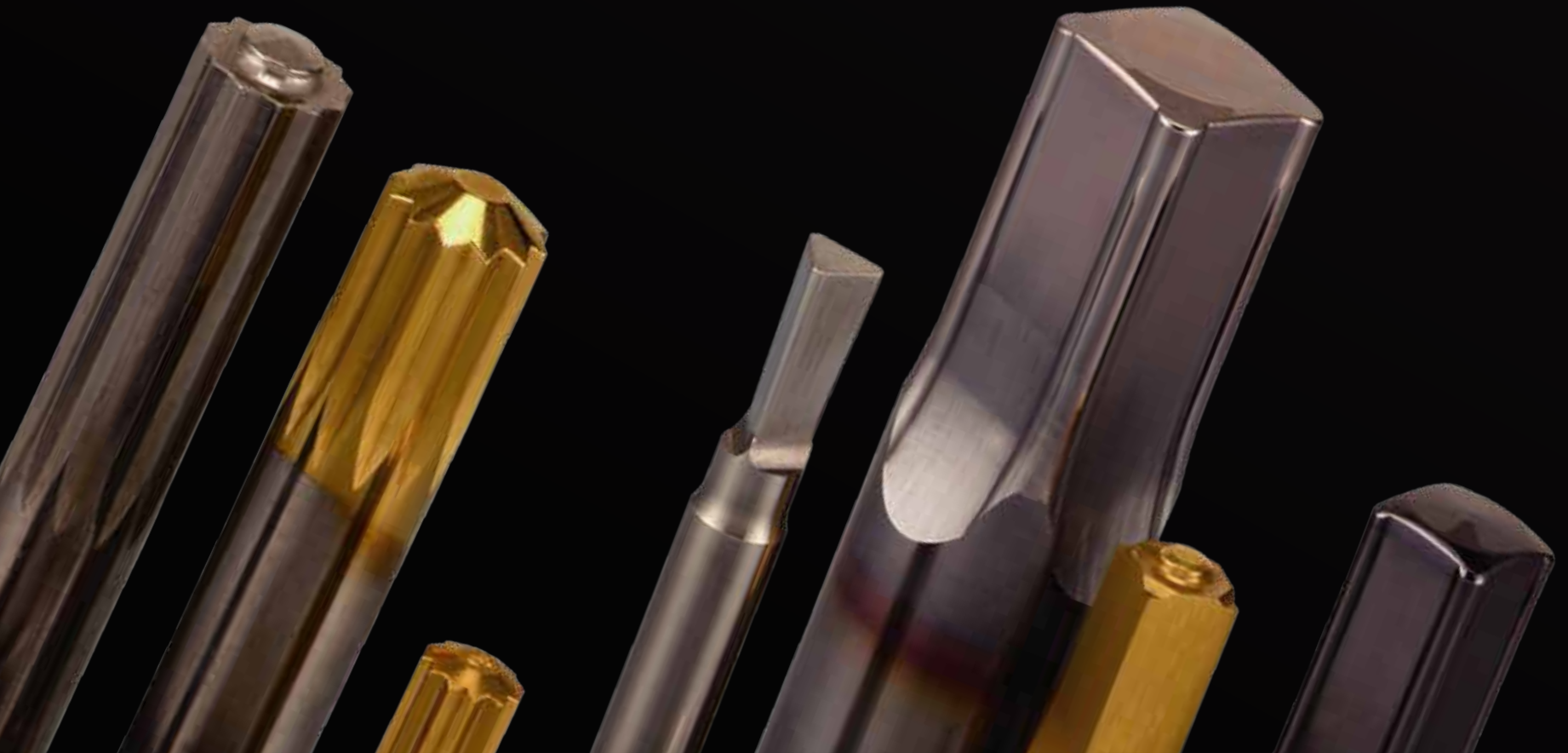




FRATOM

Your reliable partner





FRATOM



About Us

FRATOM FASTECH , located in Kaohsiung, Taiwan. With a production team of over 20 years in manufacturing experience and a highly trained dynamic team, we are uniquely equipped to satisfy your performance requirements. We are always at your disposal to answer any technical questions you may have, and to work with you providing the best option. Let us become your lifetime partner for reliable and economical tooling solutions.

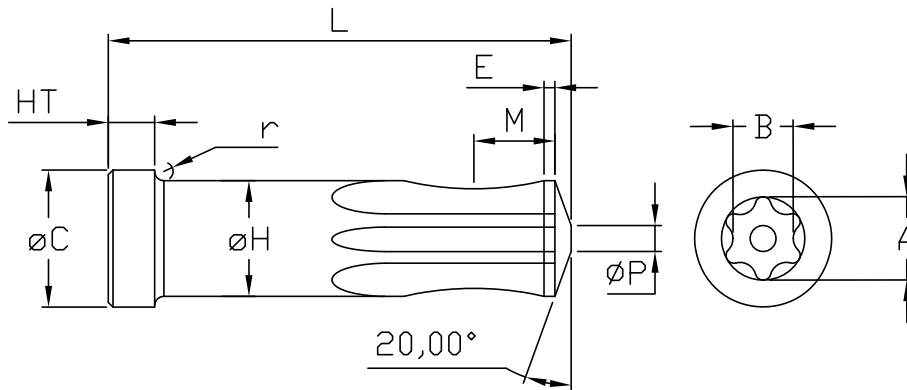
Acerca de Nosotros

FRATOM FASTECH , ubicado en Kaohsiung, Taiwán. Con un equipo de 20 años de experiencia en la producción de herramienta y matricerías. Somos dinámico y altamente capacitado para satisfacer sus requisitos de rendimiento. Estamos siempre a su disposición para responder a cualquier pregunta técnica que pueda tener y trabajar con usted para ofrecerle la mejor solución. Denos la oportunidad de trabajar con usted para proveerles herramientas de alta calidad a precios económicos.



- Round Pin Punches | Punzones de Perforación
- Hexagonal / Square Punches | Punzones Hex / Cuadrados
- Six Lobes | Punzones 6 Lobulos
- 12-Point Punches | Punzones 12 Puntos
- Special Punches | Punzones Especiales
- Carbide Punches | Punzones de Metal Duro





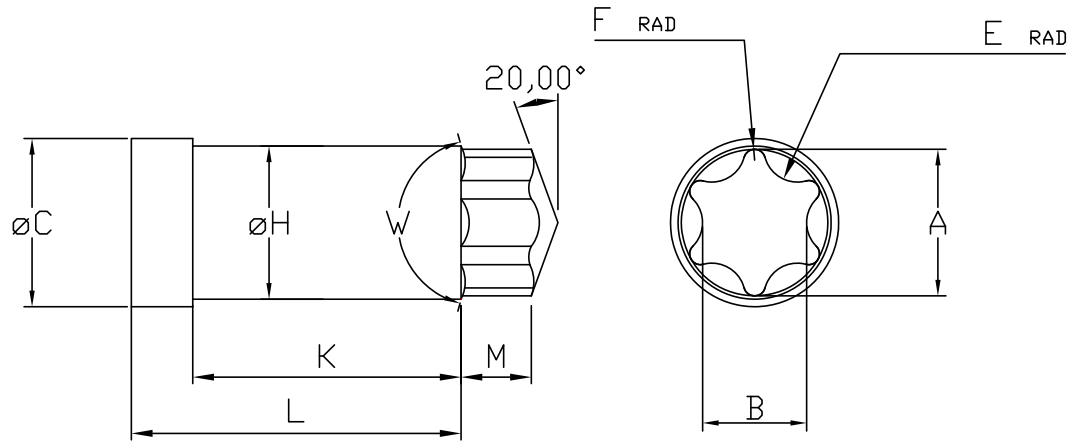
Material:

- High Speed Steel
- Powder Steel
- Carbide

PVD Coating:

- TIN
- TIALN
- ALCRONA

Size	A		B		øP	øC	øH	L	HT	M	E
	MAX / MIN	MAX / MIN	+0 -0.05	+0 -0.01		+0.05 -0.05	+0.1 -0.1	+0.3	+0.05 -0.05		
T10	2.84/2.82	2.06/2.03	0.80	4.00	3.20	36.00	5.00	3.00	0.60		
T15	3.38/3.35	2.44/2.41	1.10	5.00	3.90	36.00	5.00	3.00	0.60		
T20	3.96/3.94	2.86/2.83	1.80	6.00	4.80	36.00	5.00	3.00	0.70		
T25	4.56/4.53	3.28/3.25	1.80	6.00	4.80	36.00	5.00	3.00	0.70		
T30	5.65/5.63	4.06/4.04	2.00	7.00	6.00	36.00	5.00	4.00	1.00		
T40	6.81/6.78	4.89/4.86	2.20	8.00	7.20	36.00	5.00	5.00	1.20		
T45	7.98/7.95	5.69/5.66	2.50	11.00	9.80	36.00	5.00	5.00	1.20		
T50	8.99/8.97	6.50/6.48	2.80	14.80	12.50	50.00	5.00	7.00	1.40		
T55	11.40/11.37	8.09/8.04	2.80	14.80	12.50	50.00	5.00	7.00	1.40		



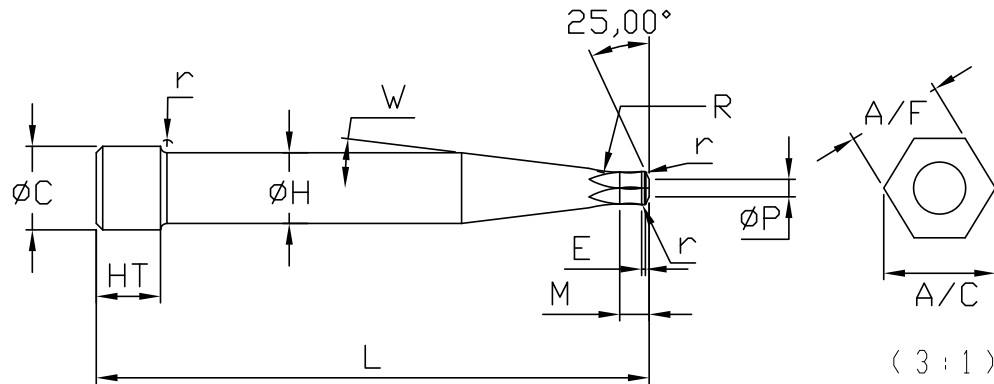
	A	B	$\varnothing C$	$\varnothing H$	K	L	W	M
Size	MAX / MIN	MAX / MIN	+0.025 -0.076	+0.012	+0.508	+0.1	/	MAX
T10	2.84/2.82	2.06/2.03	3.25	2.92	11.20	15.98	150°	1.27
T15	3.38/3.35	2.44/2.41	3.78	3.45	11.20	15.98	150°	1.524
T20	3.96/3.94	2.86/2.83	4.65	4.04	11.20	15.98	150°	2.26
T25	4.56/4.53	3.28/3.25	5.18	4.64	11.28	16.05	150°	2.92
T30	5.65/5.63	4.06/4.04	6.45	5.73	11.28	16.05	150°	3.17
T40	6.81/6.78	4.89/4.86	7.62	6.88	14.53	19.30	150°	3.43
T45	7.98/7.95	5.69/5.66	9.50	8.38	20.87	25.65	120°	3.94
T50	8.99/8.97	6.50/6.48	10.59	9.50	20.87	25.65	120°	4.47
T55	11.40/11.37	8.09/8.04	13.08	11.91	20.87	25.65	120°	5.46

Material:

- High Speed Steel
- Powder Steel
- Carbide

PVD Coating:

- TIN
- TIALN
- ALCRONA



	A/F	A/C	ϕC	ϕH	ϕP	HT	L	M	E	W
Size	+0 -0.01	MIN	+0.05 -0.05	+0 -0.01	+0.05 -0.05	+0.05 -0.05	+0.10 -0.00	/	MAX	/
M2	1.56	1.74	5.00	4.00	0.90	3.00	35.00	2.00	0.30	7.00°
M3	2.58	2.90	6.50	5.50	1.35	5.00	43.00	2.00	0.40	7.00°
M4	3.08	3.50	7.00	6.00	1.80	5.00	43.00	3.30	0.50	7.00°
M5	4.095	4.65	8.50	7.50	2.20	5.00	43.00	4.30	0.60	7.00°
M6	5.13	5.82	9.00	8.00	2.70	5.00	43.00	5.10	0.80	7.00°
M8	6.14	6.96	10.00	9.00	3.20	5.00	45.00	6.00	0.80	7.00°
M10	8.16	9.37	12.00	11.00	3.30	5.00	42.00	7.00	1.00	7.00°
M12	10.17	11.68	14.00	13.00	4.50	5.00	45.00	9.30	1.20	7.00°
M14	12.21	14.02	16.00	15.00	6.50	5.00	50.00	10.00	1.50	7.00°
M16	14.21	16.40	18.00	17.00	6.50	5.00	50.00	12.00	2.00	7.00°
M20	17.24	19.65	22.00	21.00	8.10	10.00	65.00	12.00	2.00	7.00°
M24	19.26	22.15	24.50	23.00	12.00	10.00	65.00	15.00	2.50	7.00°

Material:

- High Speed Steel
- Powder Steel
- Carbide

PVD Coating:

- TIN
- TIALN
- ALCRONA



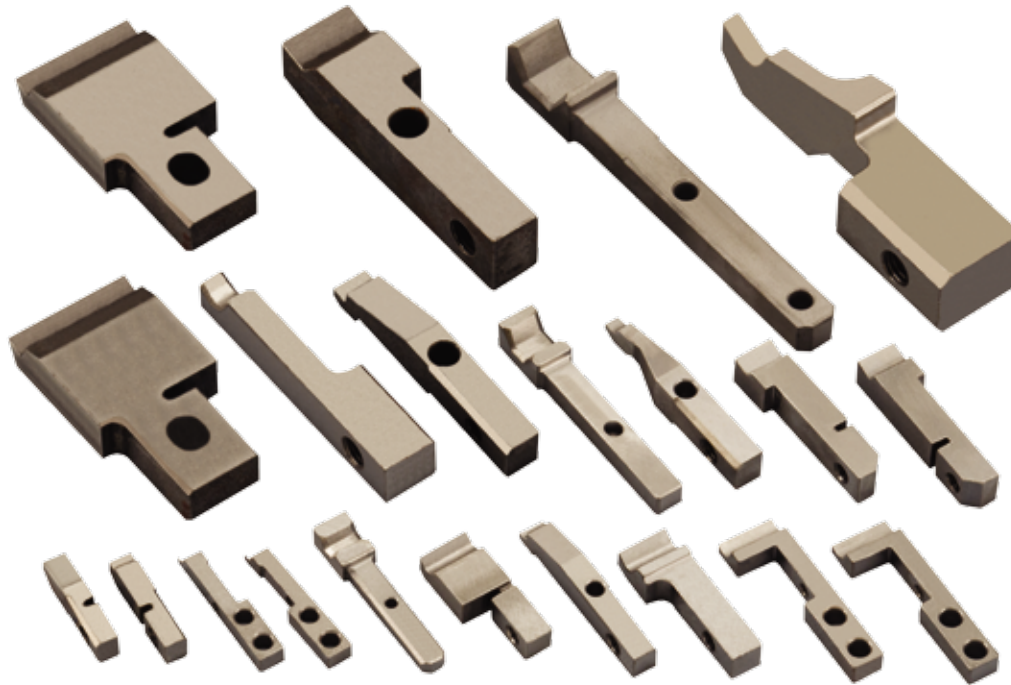
Type:

- Phillips
- Pozi
- Combi
- Lobes
- Square / Hex



Material:

- 1.2344 – SKD61 – H13
- 1.2379 – SKD11 – D2
- 1.3343 – M2 – SKH51
- 1.3243 – M35 – SKH55
- 1.3247 – M42 – SKH59
- 1.3344 – M3 – ASP2023
- ASP2030
- ASP2060
- All carbide choices



Material:

- S45C – Carbon Steel
- 1.2344 – SKD61 – H13
- 1.2379 – SKD11 – D2

Hardening:

- Tempering
- Carburization
- Nitrate
- Induction Hardening

**Material:**

- S45C – Carbon Steel
- 1.2344 – SKD61 – H13
- 1.2379 – SKD11 – D2
- 1.3343 – M2 – SKH51

**Hardening:**

- Tempering
- Carburization
- Nitrate
- Induction Hardening



Material:

- 1.2379 – SKD11 – D2
- 1.3343 – M2 – SKH51
- 1.3243 – M35 – SKH55
- 1.3247 – M42 – SKH59
- 1.3344 – M3 – ASP2023
- ASP2030
- ASP2060
- All carbide choices



Material:

- 1.2344 – SKD61 – H13
- 1.2379 – SKD11 – D2

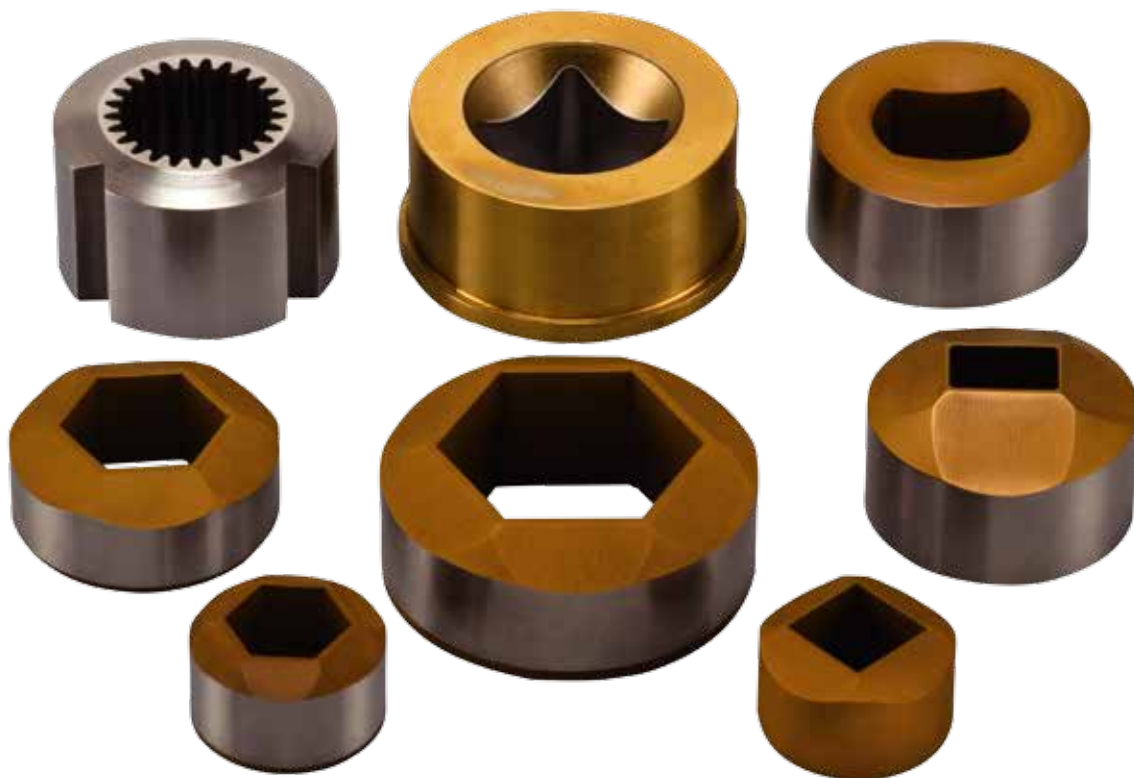


Type:

- Screw / Bolt Dies
- Nut Dies
- Rivet Dies
- Customized Dies

Material:

- 1.2344 – SKD61 – H13
- 1.2379 – SKD11 – D2
- All carbide choices



Material:

- 1.3343 – M2 – SKH51
- 1.3243 – M35 – SKH55
- 1.3247 – M42 – SKH59
- 1.3344 – M3 – ASP2023
- ASP2030
- ASP2060

Surface Treatment:

- CVD
- PVD



Material:

- 1.2344 – SKD61 – H13
- 1.2379 – SKD11 – D2
- 1.3343 – M2 – SKH51
- Carbide

Surface Treatment:

- Carburization
- Nitrate
- Coating



FRATOM

FRATOM FASTECH CO., LTD.

NO.310, GUIHUA ST., XIAOGANG DIST., KAOHSIUNG CITY 81275, TAIWAN

PHONE +886 7 787 3425 FAX +886 7 787 1843

MAIL INFO@FRATOM-FASTECH.COM WEB WWW.FRATOM-FASTECH.COM

