

FM Fully Machined, Dynamically balanced to ISO9001:2000

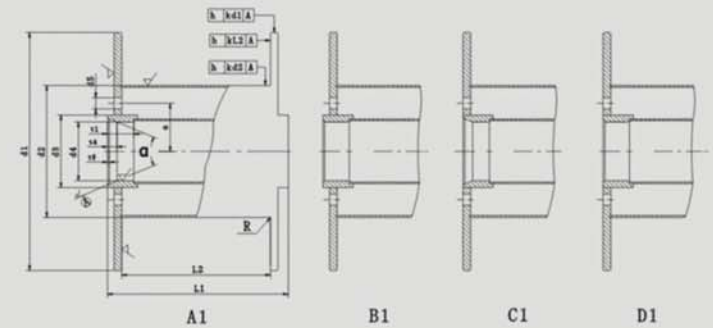
Wire drawing- DIN 46395/DIN46397

FM200-1000

These fully machined reels are suitable for drawing, stranding and bunching of cable and all types of wire. They are dynamically balanced for speeds from 25m/s to 50m/s. The reel dimensions are according to client specification or international industry standards.



FM DIMENSIONS



- » d1 Flange diameter
- » d2 Barrel diameter
- » d3 Boss diameter
- » d4 Bore diameter
- » d5 Drive pin diameter
- » L1 Overall Width
- » L2 Traverse
- » e Drive radius

Reel	d1	d2	d3	d4	d5	e	L1	L2
FM200	200	100		25	16	40	150	125
FM300	300	217		127	18	90	290	270
FM315	315	180/224	160	125/127	16	100	236	200
FM355	355	200/250	160	125/127	16	100	265	224
FM400	400	165		70	16	50	270	250
FM450	450	250/315	160	125/127	28	100	335	280
FM500	500	217		70/80/127	20	65	320	300
FM560	560	315/400	160	125/127	28	100	425	355
FM630	630	355		125	28	100	475	400
FM710	710	400/500	160	125/127	28	100	530	450
FM800	800	450	300	250	40	170	600	500
FM1000	1000	630	300	250	50	250	750	630