

4



# PERNI A SALDARE

WELDING STUDS

SCHWEISSBOLZEN

GOUJONS À SOUDER

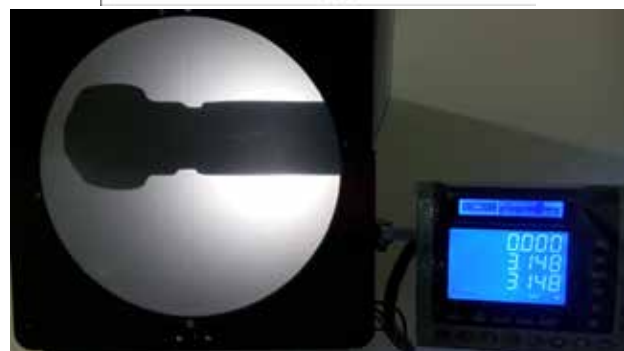
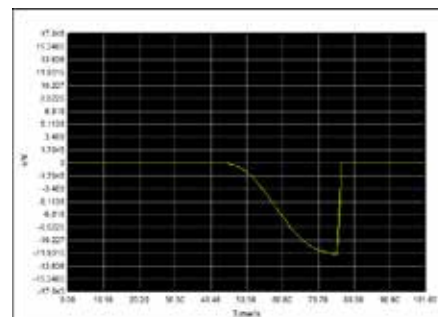
PERNOS PARA SOLDAR

# **FIXI**<sup>®</sup>

FASTENING SYSTEMS

Il laboratorio Fixi garantisce la conformità dei prodotti grazie ad accurati test interni con macchinari di ultima generazione.

Fixi carries out accurate testing in its own lab equipped with the latest generation machinery to ensure product conformity.



**ISTRUZIONI PER LA SALDATURA****A SCARICA DI CONDENSATORI**

INSTRUCTIONS FOR CAPACITOR DISCHARGE WELDING

SCHWEISSANLEITUNG FÜR SPITZENZÜNDUNG

INSTRUCTIONS POUR LE SOUDAGE PAR DÉCHARGE DE CONDENSATEURS

INSTRUCCIONES DE SOLDADURA POR DESCARGA

		Materiale della base / Workpiece Material								
		ACCIAIO fino a C35 STEEL MAX C35	ACCIAIO fino a C60 STEEL MAX C60	ACCIAIO ZINCATO STEEL ZINC PLATED	ACCIAIO INOX STAINLESS STEEL	OTTONE BRASS	RAME COPPER	Al 99,5	Al Mg3	Al Mg5
<b>Materiale prigioniero / Stud Material</b>	ACCIAIO 4.8 RAMATO STEEL 4.8 COPPER PLATED	OK	NO	+ / -	+/-	+/-	+/-	NO	NO	NO
	ACCIAIO INOX A2-50 STAINLESS STEEL A2-50	OK	+/-	+/-	OK	+/-	+/-	NO	NO	NO
	ALLUMINIO AlMg3 ALUMINIUM AlMg3	NO	NO	NO	NO	NO	NO	+/-	OK	+/-
	OTTONE BRASS	OK	NO	OK	+/-	OK	OK	NO	NO	NO

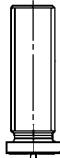
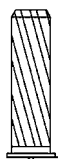
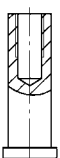

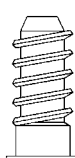
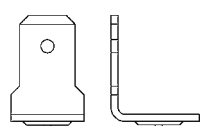
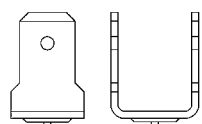
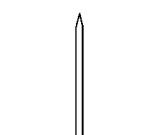
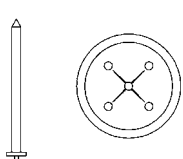
# INDICE GENERALE

## GENERAL INDEX

## INHALTSVERZEICHNIS

## SOMMAIRE GÉNÉRAL

## INDICE GENERAL

		PAGINA - PAGE
 <b>PT</b>	<b>PERNI FILETTATI A SALDARE A SCARICA DI CONDENSATORI</b> <i>CAPACITOR DISCHARGE STUDS WITH EXTERNAL THREAD</i>	6-7
	<b>PERNI PER LA VERNICIATURA</b> <i>LACQUER GROOVE STUDS FOR PAINTING</i>	6
 <b>IT</b>	<b>BUSSOLE FILETTATE A SALDARE A SCARICA DI CONDENSATORI</b> <i>CAPACITOR DISCHARGE STUDS WITH INTERNAL THREAD</i>	8-9
 <b>UT</b>	<b>PERNI LISCI A SALDARE A SCARICA DI CONDENSATORI</b> <i>NON - THREADED CAPACITOR DISCHARGE STUDS</i>	10-11
	<b>PERNI SPECIALI A SCARICA DI CONDENSATORI</b> <i>CAPACITOR DISCHARGE COARSE THREADED STUDS</i>	12
	<b>FASTON SINGOLO</b> <i>SINGLE FASTON</i>	13
	<b>FASTON DOPPIO</b> <i>DOUBLE FASTON</i>	13
	<b>CHIODI PER ISOLAMENTO A SCARICA DI CONDENSATORI</b> <i>CAPACITOR DISCHARGE INSULATION PINS</i>	14
	<b>CHIODI PER ISOLAMENTO A SCARICA DI CONDENSATORI</b> <i>CAPACITOR DISCHARGE INSULATION PINS</i>	14


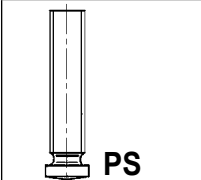
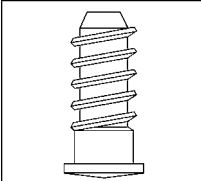


# INDICE GENERALE

## GENERAL INDEX

### INHALTSVERZEICHNIS

### SOMMAIRE GÉNÉRAL

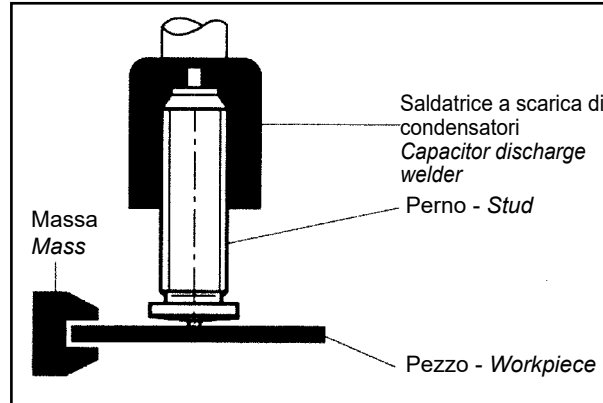
### INDICE GENERAL

		PAGINA - PAGE
	<b>SALDATRICI A SCARICA DI CONDENSATORI</b> <i>CAPACITOR DISCHARGE WELDERS</i>	15- 16-17
	<b>PORTA PERNI</b> <i>CHUCK</i>	15- 16-17
	<b>PORTA PERNI PER FASTON</b> <i>CHUCK FOR FASTON</i>	15- 16-17
	<b>ANGOLARE</b> <i>CORNER CANTILEVER</i>	15- 16-17
	<b>PERNI A SALDARE AD ARCO CORTO</b> <i>DRAWN-ARC STUDS</i>	18
	<b>PERNI SPECIALI A SALDARE AD ARCO CORTO</b> <i>COARSE THREADED SHORT-CYCLE STUDS</i>	19
<b>UD - PD SD - RD ID - RF PF - UF</b>	<b>A RICHIESTA</b> <i>ON DEMAND</i>	20
	<b>SALDATRICE AD ARCO</b> <i>ARC WELDER</i>	21
	<b>SALDATRICI AUTOMATICHE</b> <i>AUTOMATIC WELDING MACHINE</i>	22-23-24-25

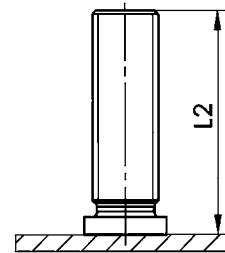
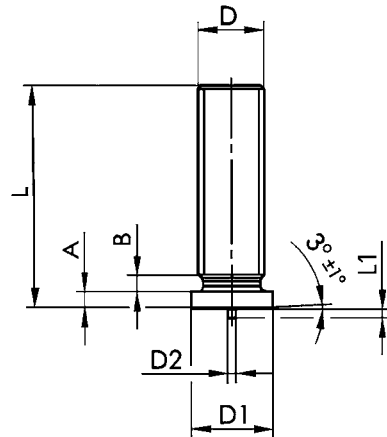
**PERNI FILETTATI A SALDARE A SCARICA DI CONDENSATORI**  
 CAPACITOR DISCHARGE STUDS WITH EXTERNAL THREAD  
 GEWINDEBOLZEN FÜR SPITZENZÜNDUNG  
 GOUJONS FILETÉS À SOUDER PAR DÉCHARGE DE CONDENSATEURS  
 PERNOS CON ROSCA EXTERIOR PARA SOLDAR CON DESCARGA

DIN EN ISO 13918

PT



PRIMA DELLA SALDATURA  
 BEFORE WELDING  
 VOR DEM SCHWEISSEN  
 AVANT SOUDAGE  
 ANTES DE SOLDAR

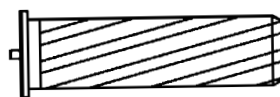


DOPO LA SALDATURA  
 AFTER WELDING  
 NACH DEM SCHWEISSEN  
 APRÈS SOUDAGE  
 DESPUES DE SOLDAR

D	L + 0,6	D1 ± 0,2	D2 ± 0,08	L1 ± 0,05	A	B max	L2
M3	vedi pag. 5 see page 5	4,5	0,60	0,55	1,4-0,7	1,5	L-0,3
M4		5,5	0,65				
M5		6,5	0,75	0,80	1,4-0,6	2	
M6		7,5					
M8		9,0					
* M10		11,0	0,85	1,8-0,6	3	L-0,6	
* M12	12,6 ± 0,1						

\* M10 - \* M12 FIXI STANDARD

PERNI PER LA VERNICIATURA A RICHIESTA  
 LACQUER GROOVE STUDS FOR PAINTING  
 ON REQUEST  
 LACKBOLZEN AUF ANFRAGE  
 GOUJONS AVEC RAINURE SUR DEMANDE  
 PERNOS SOLDAR LACQUER GROOVE BAJO SOLICITUD

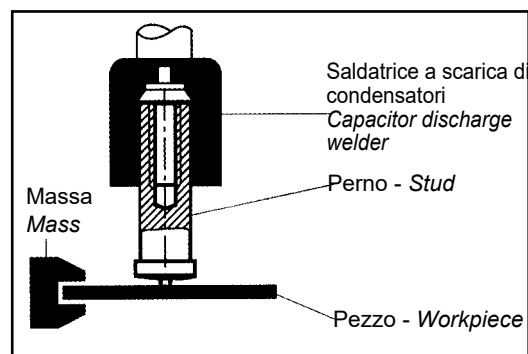


<b>ACCIAIO 4.8 RAMATO</b> STEEL 4.8 COPPER PLATED STAHL 4.8 VERKUPFERT ACIER 4.8 CUIVRE ACERO 4.8 COBREADO			<b>ACCIAIO INOX A2-50</b> STAINLESS STEEL A2-50 ROSTFREIER STAHL A2-50 INOX A2-50 INOX A2-50			<b>ALLUMINIO AIMg3</b> ALUMINIUM AIMg3 ALUMINIUM AIMg3 ALUMINIUM AIMg3 ALUMINIO AIMg3			<b>OTTONE CuZn37</b> BRASS CuZn37 MESSING CuZn37 LAITON CuZn37 LATÓN CuZn37		
Filetto Thread Size	Lunghezza Length	Codice Code	Filetto Thread Size	Lunghezza Length	Codice Code	Filetto Thread Size	Lunghezza Length	Codice Code	Filetto Thread Size	Lunghezza Length	Codice Code
M3	6	03ARPR306	M3	6	03IXPR306	M3	6	03ALPR306	M3	6	03OTPR306
	8	03ARPR308		8	03IXPR308		8	03ALPR308		8	03OTPR308
	10	03ARPR310		10	03IXPR310		10	03ALPR310		10	03OTPR310
	12	03ARPR312		12	03IXPR312		12	03ALPR312		12	03OTPR312
	15	03ARPR315		15	03IXPR315		15	03ALPR315		15	03OTPR315
	16	03ARPR316		16	03IXPR316		16	03ALPR316		16	03OTPR316
	20	03ARPR320		20	03IXPR320		20	03ALPR320		20	03OTPR320
	25	03ARPR325		25	03IXPR325		25	03ALPR325		25	03OTPR325
	30	03ARPR330		30	03IXPR330		30	03ALPR330		30	03OTPR330
	35	03ARPR335		35	03IXPR335		35	03ALPR335		35	03OTPR335
40	03ARPR340	40	03IXPR340	40	03ALPR340	40	03OTPR340				
M4	6	03ARPR406	M4	6	03IXPR406	M4	6	03ALPR406	M4	6	03OTPR406
	8	03ARPR408		8	03IXPR408		8	03ALPR408		8	03OTPR408
	10	03ARPR410		10	03IXPR410		10	03ALPR410		10	03OTPR410
	12	03ARPR412		12	03IXPR412		12	03ALPR412		12	03OTPR412
	15	03ARPR415		15	03IXPR415		15	03ALPR415		15	03OTPR415
	16	03ARPR416		16	03IXPR416		16	03ALPR416		16	03OTPR416
	20	03ARPR420		20	03IXPR420		20	03ALPR420		20	03OTPR420
	25	03ARPR425		25	03IXPR425		25	03ALPR425		25	03OTPR425
	30	03ARPR430		30	03IXPR430		30	03ALPR430		30	03OTPR430
	35	03ARPR435		35	03IXPR435		35	03ALPR435		35	03OTPR435
40	03ARPR440	40	03IXPR440	40	03ALPR440	40	03OTPR440				
45	03ARPR445	45	03IXPR445	45	03ALPR445	45	03OTPR445				
50	03ARPR450	50	03IXPR450	50	03ALPR450	50	03OTPR450				
M5	6	03ARPR506	M5	6	03IXPR506	M5	6	03ALPR506	M5	6	03OTPR506
	8	03ARPR508		8	03IXPR508		8	03ALPR508		8	03OTPR508
	10	03ARPR510		10	03IXPR510		10	03ALPR510		10	03OTPR510
	12	03ARPR512		12	03IXPR512		12	03ALPR512		12	03OTPR512
	15	03ARPR515		15	03IXPR515		15	03ALPR515		15	03OTPR515
	16	03ARPR516		16	03IXPR516		16	03ALPR516		16	03OTPR516
	20	03ARPR520		20	03IXPR520		20	03ALPR520		20	03OTPR520
	25	03ARPR525		25	03IXPR525		25	03ALPR525		25	03OTPR525
	30	03ARPR530		30	03IXPR530		30	03ALPR530		30	03OTPR530
	35	03ARPR535		35	03IXPR535		35	03ALPR535		35	03OTPR535
40	03ARPR540	40	03IXPR540	40	03ALPR540	40	03OTPR540				
45	03ARPR545	45	03IXPR545	45	03ALPR545	45	03OTPR545				
M6	8	03ARPR608	M6	8	03IXPR608	M6	8	03ALPR608	M6	8	03OTPR608
	10	03ARPR610		10	03IXPR610		10	03ALPR610		10	03OTPR610
	12	03ARPR612		12	03IXPR612		12	03ALPR612		12	03OTPR612
	15	03ARPR615		15	03IXPR615		15	03ALPR615		15	03OTPR615
	16	03ARPR616		16	03IXPR616		16	03ALPR616		16	03OTPR616
	20	03ARPR620		20	03IXPR620		20	03ALPR620		20	03OTPR620
	25	03ARPR625		25	03IXPR625		25	03ALPR625		25	03OTPR625
	30	03ARPR630		30	03IXPR630		30	03ALPR630		30	03OTPR630
	35	03ARPR635		35	03IXPR635		35	03ALPR635		35	03OTPR635
	40	03ARPR640		40	03IXPR640		40	03ALPR640		40	03OTPR640
45	03ARPR645	45	03IXPR645	45	03ALPR645	45	03OTPR645				
50	03ARPR650	50	03IXPR650	50	03ALPR650	50	03OTPR650				
55	03ARPR655	55	03IXPR655	55	03ALPR655	55	03OTPR655				
M8	10	03ARPR810	M8	10	03IXPR810	M8	10	03ALPR810	M8	10	03OTPR810
	12	03ARPR812		12	03IXPR812		12	03ALPR812		12	03OTPR812
	15	03ARPR815		15	03IXPR815		15	03ALPR815		14	03OTPR814
	16	03ARPR816		16	03IXPR816		16	03ALPR816		16	03OTPR816
	20	03ARPR820		20	03IXPR820		20	03ALPR820		20	03OTPR820
	25	03ARPR825		25	03IXPR825		25	03ALPR825		25	03OTPR825
	30	03ARPR830		30	03IXPR830		30	03ALPR830		30	03OTPR830
	35	03ARPR835		35	03IXPR835		35	03ALPR835		35	03OTPR835
	40	03ARPR840		40	03IXPR840		40	03ALPR840		40	03OTPR840
	45	03ARPR845		45	03IXPR845		45	03ALPR845		45	03OTPR845
50	03ARPR850	50	03IXPR850	50	03ALPR850	50	03OTPR850				
60	03ARPR860	60	03IXPR860	60	03ALPR860	60	03OTPR860				

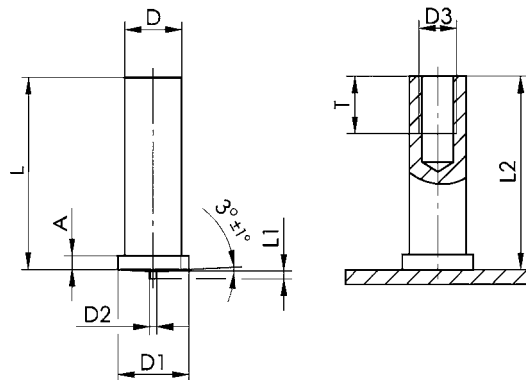
**BUSSOLE FILETTATE A SALDARE A SCARICA DI CONDENSATORI**  
**CAPACITOR DISCHARGE STUDS WITH INTERNAL THREAD**  
**INNENGEWINDEBUCHSEN FÜR SPITZENZÜNDUNG**  
**DOUILLES TARAUDÉES À SOUDER PAR DÉCHARGE DE CONDENSATEURS**  
**PERNOS CON ROSCA INTERIOR PARA SOLDAR CON DESCARGA**

DIN EN ISO 13918

IT



PRIMA DELLA SALDATURA  
 BEFORE WELDING  
 VOR DEM SCHWEISSEN  
 AVANT SOUDAGE  
 ANTES DE SOLDAR



DOPO LA SALDATURA  
 AFTER WELDING  
 NACH DEM SCHWEISSEN  
 APRES SOUDAGE  
 DESPUES DE SOLDAR

D ± 0,1	L + 0,3	D1 ± 0,2	D2 ± 0,08	L1 ± 0,05	A	D3	T + 0,5	L2
ø5	vedi pag. 7	6,5	0,75	0,80	1,4-0,7	M3	5	L-0,3
ø6		7,5				M4	6	
ø7,1	see page 7	9	0,85	1,4-0,6	M5	7,5		
* ø8					M6			
* ø10,8					11,6 ±0,1	1,8-0,6	M8	

\* ø8 - \* ø10 FIXI STANDARD



<b>ACCIAIO 4.8 RAMATO</b> STEEL 4.8 COPPER PLATED STAHL 4.8 VERKUPFERT ACIER 4.8 CUIVRE ACERO 4.8 COBREADO			<b>ACCIAIO INOX</b> STAINLESS STEEL ROSTFREIER STAHL INOX INOX			<b>ALLUMINIO AlMg3</b> ALUMINIUM AlMg3 ALUMINIUM AlMg3 ALUMINIUM AlMg3 ALUMINIO AlMg3			<b>OTTONE CuZn37</b> BRASS CuZn37 MESSING CuZn37 LAITON CuZn37 LATÓN CuZn37		
Filetto Thread Size	Lunghezza Length	Codice Code	Filetto Thread Size	Lunghezza Length	Codice Code	Filetto Thread Size	Lunghezza Length	Codice Code	Filetto Thread Size	Lunghezza Length	Codice Code
M3	6	03ARBU3506	M3	6	03IXBU3506	M3	6	03ALBU3506	M3	6	03OTBU3506
	8	03ARBU3508		8	03IXBU3508		8	03ALBU3508		8	03OTBU3508
	10	03ARBU3510		10	03IXBU3510		10	03ALBU3510		10	03OTBU3510
	12	03ARBU3512		12	03IXBU3512		12	03ALBU3512		12	03OTBU3512
	15	03ARBU3515		15	03IXBU3515		15	03ALBU3515		15	03OTBU3515
	16	03ARBU3516		16	03IXBU3516		16	03ALBU3516		16	03OTBU3516
	20	03ARBU3520		20	03IXBU3520		20	03ALBU3520		20	03OTBU3520
	25	03ARBU3525		25	03IXBU3525		25	03ALBU3525		25	03OTBU3525
	30	03ARBU3530		30	03IXBU3530		30	03ALBU3530		30	03OTBU3530
M4	8	03ARBU4608	M4	8	03IXBU4608	M4	8	03ALBU4608	M4	8	03OTBU4608
	10	03ARBU4610		10	03IXBU4610		10	03ALBU4610		10	03OTBU4610
	12	03ARBU4612		12	03IXBU4612		12	03ALBU4612		12	03OTBU4612
	15	03ARBU4615		15	03IXBU4615		15	03ALBU4615		15	03OTBU4615
	16	03ARBU4616		16	03IXBU4616		16	03ALBU4616		16	03OTBU4616
	20	03ARBU4620		20	03IXBU4620		20	03ALBU4620		20	03OTBU4620
	25	03ARBU4625		25	03IXBU4625		25	03ALBU4625		25	03OTBU4625
	30	03ARBU4630		30	03IXBU4630		30	03ALBU4630		30	03OTBU4630
	35	03ARBU4635		35	03IXBU4635		35	03ALBU4635		35	03OTBU4635
	40	03ARBU4640		40	03IXBU4640		40	03ALBU4640		40	03OTBU4640
M5	10	03ARBU5710	M5	10	03IXBU5710	M5	10	03ALBU5710	M5	10	03OTBU5710
	12	03ARBU5712		12	03IXBU5712		12	03ALBU5712		12	03OTBU5712
	15	03ARBU5715		15	03IXBU5715		15	03ALBU5715		15	03OTBU5715
	16	03ARBU5716		16	03IXBU5716		16	03ALBU5716		16	03OTBU5716
	20	03ARBU5720		20	03IXBU5720		20	03ALBU5720		20	03OTBU5720
	25	03ARBU5725		25	03IXBU5725		25	03ALBU5725		25	03OTBU5725
	30	03ARBU5730		30	03IXBU5730		30	03ALBU5730		30	03OTBU5730
	35	03ARBU5735		35	03IXBU5735		35	03ALBU5735		35	03OTBU5735
	40	03ARBU5740		40	03IXBU5740		40	03ALBU5740		40	03OTBU5740
M6	10	03ARBU6810	M6	10	03IXBU6810	M6	10	03ALBU6810	M6	10	03OTBU6810
	12	03ARBU6812		12	03IXBU6812		12	03ALBU6812		12	03OTBU6812
	15	03ARBU6815		15	03IXBU6815		15	03ALBU6815		15	03OTBU6815
	16	03ARBU6816		16	03IXBU6816		16	03ALBU6816		16	03OTBU6816
	20	03ARBU6820		20	03IXBU6820		20	03ALBU6820		20	03OTBU6820
	25	03ARBU6825		25	03IXBU6825		25	03ALBU6825		25	03OTBU6825
	30	03ARBU6830		30	03IXBU6830		30	03ALBU6830		30	03OTBU6830
	35	03ARBU6835		35	03IXBU6835		35	03ALBU6835		35	03OTBU6835
	40	03ARBU6840		40	03IXBU6840		40	03ALBU6840		40	03OTBU6840
M8	15	03ARBU81015	M8	15	03IXBU81015	M8	15	03ALBU81015	M8	15	03OTBU81015
	16	03ARBU81016		16	03IXBU81016		16	03ALBU81016		16	03OTBU81016
	20	03ARBU81020		20	03IXBU81020		20	03ALBU81020		20	03OTBU81020
	25	03ARBU81025		25	03IXBU81025		25	03ALBU81025		25	03OTBU81025
	30	03ARBU81030		30	03IXBU81030		30	03ALBU81030		30	03OTBU81030
	35	03ARBU81035		35	03IXBU81035		35	03ALBU81035		35	03OTBU81035
	40	03ARBU81040		40	03IXBU81040		40	03ALBU81040		40	03OTBU81040

# PERNI LISCI A SALDARE A SCARICA DI CONDENSATORI

NON - THREADED CAPACITOR DISCHARGE STUDS

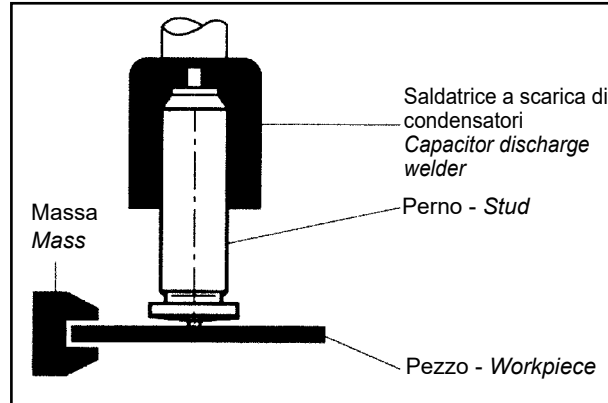
STIFTE FÜR SPITZENZÜNDUNG

GOUJONS LISSES À SOUDER PAR DÉCHARGE DE CONDENSATEURS

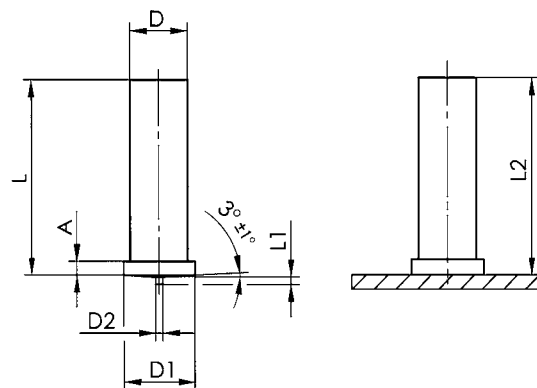
PERNOS SIN ROSCA PARA SOLDAR CON DESCARGA

DIN EN ISO 13918

UT



PRIMA DELLA SALDATURA  
BEFORE WELDING  
VOR DEM SCHWEISSEN  
AVANT SOUDAGE  
ANTES DE SOLDAR



DOPO LA SALDATURA  
AFTER WELDING  
NACH DEM SCHWEISSEN  
APRÈS SOUDAGE  
DESPUES DE SOLDAR

D ± 0,1	L + 0,6	D1 ± 0,2	D2 ± 0,08	L1 ± 0,05	A	L2
ø3	vedi pag. 9 see page 9	4,5	0,60	0,55	1,4-0,7	L-0,3
ø4		5,5	0,65			
ø5		6,5	0,75	0,80		
ø6		7,5				
ø7,1		9,0		0,85	1,4-0,6	
ø8		11,6 ± 0,1	1,8-0,6		L-0,6	
* ø10,8						

\* ø10,8 FIXI STANDARD

<b>ACCIAIO 4.8 RAMATO</b> STEEL 4.8 COPPER PLATED STAHL 4.8 VERKUPFERT ACIER 4.8 CUIVRE ACERO 4.8 COBREADO			<b>ACCIAIO INOX A2-50</b> STAINLESS STEEL A2-50 ROSTFREIER STAHL A2-50 INOX A2-50 INOX A2-50			<b>ALLUMINIO AIMg3</b> ALUMINIUM AIMg3 ALUMINIUM AIMg3 ALUMINIUM AIMg3 ALUMINIO AIMg3			<b>OTTONE CuZn37</b> BRASS CuZn37 MESSING CuZn37 LAITON CuZn37 LATÓN CuZn37					
Diametro Diameter	Lunghezza Length	Codice Code	Diametro Diameter	Lunghezza Length	Codice Code	Diametro Diameter	Lunghezza Length	Codice Code	Diametro Diameter	Lunghezza Length	Codice Code			
Ø 3	6	03 ARPL306	Ø 3	6	03IXPL306	Ø 3	6	03ALPL306	Ø 3	6	03OTPL306			
	8	03 ARPL308		8	03IXPL308		8	03ALPL308		8	03OTPL308			
	10	03 ARPL310		10	03IXPL310		10	03ALPL310		10	03OTPL310			
	12	03 ARPL312		12	03IXPL312		12	03ALPL312		12	03OTPL312			
	15	03 ARPL315		15	03IXPL315		15	03ALPL315		15	03OTPL315			
	16	03 ARPL316		16	03IXPL316		16	03ALPL316		16	03OTPL316			
	20	03 ARPL320		20	03IXPL320		20	03ALPL320		20	03OTPL320			
	25	03 ARPL325		25	03IXPL325		25	03ALPL325		25	03OTPL325			
30	03 ARPL330	30	03IXPL330	30	03ALPL330	30	03OTPL330							
Ø 4	6	03 ARPL406	Ø 4	6	03IXPL406	Ø 4	6	03ALPL406	Ø 4	6	03OTPL406			
	8	03 ARPL408		8	03IXPL408		8	03ALPL408		8	03OTPL408			
	10	03 ARPL410		10	03IXPL410		10	03ALPL410		10	03OTPL410			
	12	03 ARPL412		12	03IXPL412		12	03ALPL412		12	03OTPL412			
	15	03 ARPL415		15	03IXPL415		15	03ALPL415		15	03OTPL415			
	16	03 ARPL416		16	03IXPL416		16	03ALPL416		16	03OTPL416			
	20	03 ARPL420		20	03IXPL420		20	03ALPL420		20	03OTPL420			
	25	03 ARPL425		25	03IXPL425		25	03ALPL425		25	03OTPL425			
30	03 ARPL430	30	03IXPL430	30	03ALPL430	30	03OTPL430							
35	03 ARPL435	35	03IXPL435	35	03ALPL435	35	03OTPL435							
Ø 5	8	03 ARPL508	Ø 5	8	03IXPL508	Ø 5	8	03ALPL508	Ø 5	8	03OTPL508			
	10	03 ARPL510		10	03IXPL510		10	03ALPL510		10	03OTPL510			
	12	03 ARPL512		12	03IXPL512		12	03ALPL512		12	03OTPL512			
	15	03 ARPL515		15	03IXPL515		15	03ALPL515		15	03OTPL515			
	16	03 ARPL516		16	03IXPL516		16	03ALPL516		16	03OTPL516			
	20	03 ARPL520		20	03IXPL520		20	03ALPL520		20	03OTPL520			
	25	03 ARPL525		25	03IXPL525		25	03ALPL525		25	03OTPL525			
	30	03 ARPL530		30	03IXPL530		30	03ALPL530		30	03OTPL530			
35	03 ARPL535	35	03IXPL535	35	03ALPL535	35	03OTPL535							
40	03 ARPL540	40	03IXPL540	40	03ALPL540	40	03OTPL540							
50	03 ARPL550	50	03IXPL550	50	03ALPL550	50	03OTPL550							
Ø 6	8	03 ARPL608	Ø 6	8	03IXPL608	Ø 6	8	03ALPL608	Ø 6	8	03OTPL608			
	10	03 ARPL610		10	03IXPL610		10	03ALPL610		10	03OTPL610			
	12	03 ARPL612		12	03IXPL612		12	03ALPL612		12	03OTPL612			
	15	03 ARPL615		15	03IXPL615		15	03ALPL615		15	03OTPL615			
	16	03 ARPL616		16	03IXPL616		16	03ALPL616		16	03OTPL616			
	20	03 ARPL620		20	03IXPL620		20	03ALPL620		20	03OTPL620			
	25	03 ARPL625		25	03IXPL625		25	03ALPL625		25	03OTPL625			
	30	03 ARPL630		30	03IXPL630		30	03ALPL630		30	03OTPL630			
	35	03 ARPL635		35	03IXPL635		35	03ALPL635		35	03OTPL635			
	40	03 ARPL640		40	03IXPL640		40	03ALPL640		40	03OTPL640			
45	03 ARPL645	45	03IXPL645	45	03ALPL645	45	03OTPL645							
50	03 ARPL650	50	03IXPL650	50	03ALPL650	50	03OTPL650							
Ø 7,1	10	03 ARPL710	Ø 7,1	10	03IXPL710	Ø 7,1	10	03ALPL710	Ø 7,1	10	03OTPL710			
	12	03 ARPL712		12	03IXPL712		12	03ALPL712		12	03OTPL712			
	15	03 ARPL715		15	03IXPL715		15	03ALPL715		15	03OTPL715			
	16	03 ARPL716		16	03IXPL716		16	03ALPL716		16	03OTPL716			
	20	03 ARPL720		20	03IXPL720		20	03ALPL720		20	03OTPL720			
	25	03 ARPL725		25	03IXPL725		25	03ALPL725		25	03OTPL725			
	30	03 ARPL730		30	03IXPL730		30	03ALPL730		30	03OTPL730			
	35	03 ARPL735		35	03IXPL735		35	03ALPL735		35	03OTPL735			
	40	03 ARPL740		40	03IXPL740		40	03ALPL740		40	03OTPL740			
	45	03 ARPL745		45	03IXPL745		45	03ALPL745		45	03OTPL745			
50	03 ARPL750	50	03IXPL750	50	03ALPL750	50	03OTPL750							
55	03 ARPL755	55	03IXPL755	55	03ALPL755	55	03OTPL755							
Ø 8	12	03ARPL812	Ø 8	12	03IXPL812	Ø 8	12	03ALPL812	Ø 8	12	03OTPL812			
	15	03ARPL815		15	03IXPL815		15	03ALPL815		15	03OTPL815			
	16	03ARPL816		16	03IXPL816		16	03ALPL816		16	03OTPL816			
	20	03ARPL820		20	03IXPL820		20	03ALPL820		20	03OTPL820			
	25	03ARPL825		25	03IXPL825		25	03ALPL825		25	03OTPL825			
	30	03ARPL830		30	03IXPL830		30	03ALPL830		30	03OTPL830			
Ø 10	35	03ARPL835	Ø 10	35	03IXPL835	Ø 10	35	03ALPL835	Ø 10	35	03OTPL835			
	40	03ARPL840		40	03IXPL840		40	03ALPL840		40	03OTPL840			
	15	03ARPL1015		Ø 10	15		03IXPL1015	Ø 10		15	03ALPL1015	Ø 10	15	03OTPL1015
	20	03ARPL1020			20		03IXPL1020			20	03ALPL1020		20	03OTPL1020
	25	03ARPL1025			25		03IXPL1025			25	03ALPL1025		25	03OTPL1025
	30	03ARPL1030			30		03IXPL1030			30	03ALPL1030		30	03OTPL1030
35	03ARPL1035	35	03IXPL1035		35	03ALPL1035	35		03OTPL1035					
40	03ARPL1040	40	03IXPL1040		40	03ALPL1040	40		03OTPL1040					

# PERNI SPECIALI A SCARICA DI CONDENSATORI

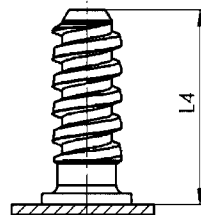
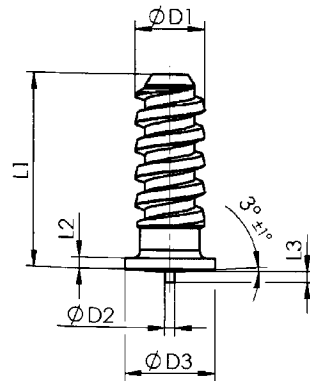
CAPACITOR DISCHARGE COARSE THREADED STUDS

GROBGEWINDEBOLZEN FÜR SPITZENZÜNDUNG

GOUJONS SAPIN PAR DÉCHARGE DE CONDENSATEURS

PERNOS DE VARILLA PARA SOLDAR CON DESCARGA

PRIMA DELLA SALDATURA  
BEFORE WELDING  
VOR DEM SCHWEISSEN  
AVANT SOUDAGE  
ANTES DE SOLDAR



DOPO LA SALDATURA  
AFTER WELDING  
NACH DEM SCHWEISSEN  
APRÈS SOUDAGE  
DESPUES DE SOLDAR

D1	D2 ± 0,08	D3 ± 0,2	L1 + 0,6	L2	L3 ± 0,05	L4
ø5	0,75	6,5		1,4-0,6	0,8	L1-0,3

ACCIAIO 4.8 RAMATO STEEL 4.8 COPPER PLATED STAHL 4.8 VERKUPFERT ACIER 4.8 CUIVRÉ ACERO 4.8 COBREDO			ACCIAIO INOX A2-50 STAINLESS STEEL A2-50 ROSTFREIER STAHL A2-50 INOX A2-50 INOX A2-50		
Diametro Diameter	Lunghezza Length	Codice Code	Diametro Diameter	Lunghezza Length	Codice Code
Ø 5	9	03ARAN509CP	Ø 5	9	03IXAN509CP
	14,2	03ARAN515CP		14,2	03IXAN515CP
	16,5	03ARAN516CP		16,5	03IXAN516CP
	18	03ARAN518CP		18	03IXAN518CP
	25	03ARAN525CP		25	03IXAN525CP

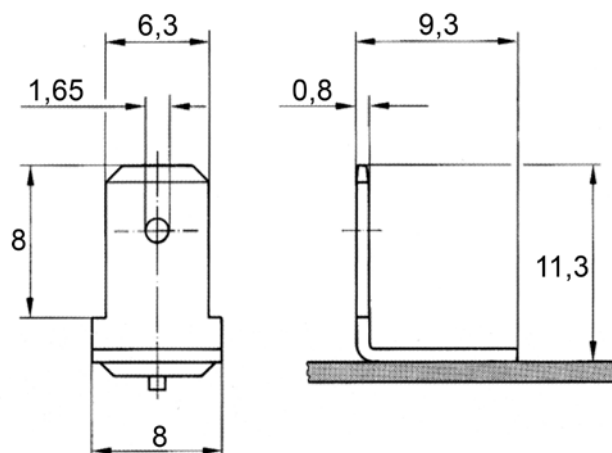
# FASTON A SCARICA DI CONDENSATORI

CAPACITOR DISCHARGE FASTON

FLACHSTECKER FÜR SPITZENZÜNDUNG

COSSE PAR DÉCHARGE DE CONDENSATEURS

FASTON PARA SOLDAR CON DESCARGA



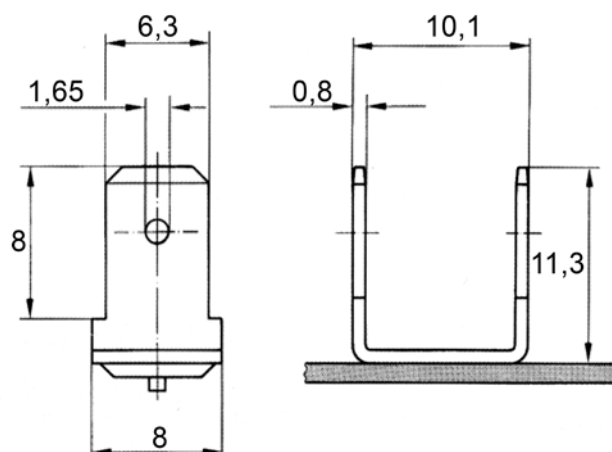
PRIMA DELLA SALDATURA  
BEFORE WELDING  
VOR DEM SCHWEISSEN  
AVANT SOUDAGE  
ANTES DE SOLDAR

DOPO LA SALDATURA  
AFTER WELDING  
NACH DEM SCHWEISSEN  
APRÈS SOUDAGE  
DESPUES DE SOLDAR

**FASTON SINGOLO**  
SINGLE FASTON  
FLACHSTECKER  
COSSE SIMPLE  
FASTON SIMPLE



<b>ACCIAIO 4.8 RAMATO</b> STEEL 4.8 COPPER PLATED STAHL 4.8 VERKUPFERT ACIER 4.8 CUIVRÉ ACERO 4.8 COBREADO	<b>ACCIAIO INOX A2-50</b> STAINLESS STEEL A2-50 ROSTFREIER STAHL A2-50 INOX A2-50 INOX A2-50	<b>ALLUMINIO AIMg3</b> ALUMINIUM AIMg3 ALUMINIUM AIMg3 ALUMINIUM AIMg3 ALUMINIO AIMg3	<b>OTTONE CuZn37</b> BRASS CuZn37 MESSING CuZn37 LAITON CuZn37 LATÓN CuZn37
Codice Code	Codice Code	Codice Code	Codice Code
03ARFS	03IXFS	03ALFS	03CUFS



PRIMA DELLA SALDATURA  
BEFORE WELDING  
VOR DEM SCHWEISSEN  
AVANT SOUDAGE  
ANTES DE SOLDAR

DOPO LA SALDATURA  
AFTER WELDING  
NACH DEM SCHWEISSEN  
APRÈS SOUDAGE  
DESPUES DE SOLDAR

**FASTON DOPPIO**  
DOUBLE FASTON  
DOPPEL FLACHSTECKER  
COSSE DOUBLE  
FASTON DOBLE



<b>ACCIAIO 4.8 RAMATO</b> STEEL 4.8 COPPER PLATED STAHL 4.8 VERKUPFERT ACIER 4.8 CUIVRÉ ACERO 4.8 COBREADO	<b>ACCIAIO INOX A2-50</b> STAINLESS STEEL A2-50 ROSTFREIER STAHL A2-50 INOX A2-50 INOX A2-50	<b>ALLUMINIO AIMg3</b> ALUMINIUM AIMg3 ALUMINIUM AIMg3 ALUMINIUM AIMg3 ALUMINIO AIMg3	<b>OTTONE CuZn37</b> BRASS CuZn37 MESSING CuZn37 LAITON CuZn37 LATÓN CuZn37
Codice Code	Codice Code	Codice Code	Codice Code
03ARFD	03IXFD	03ALFD	03CUFD

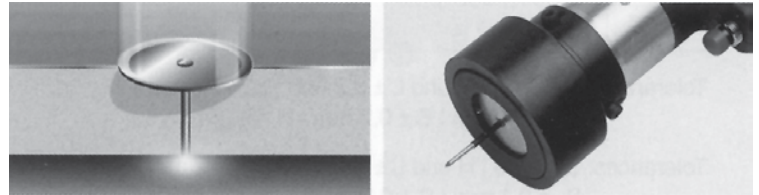
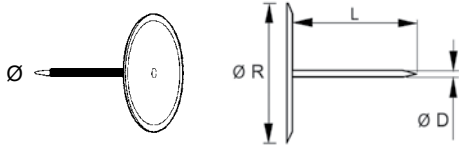
# CHIODI PER ISOLAMENTO A SCARICA DI CONDENSATORI

CAPACITOR DISCHARGE INSULATION PINS

TELLERSTIFTE MIT ISOLIERUNG

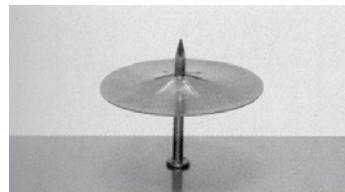
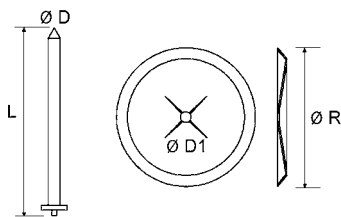
CLOU D'ISOLATION PAR DÉCHARGE DE CONDENSATEURS

PINS DE AISLAMIENTO PARA SOLDAR CON DESCARGA



**ACCIAIO 4.8 RAMATO**  
**STEEL 4.8 COPPER PLATED**  
**STAHL 4.8 VERKUPFERT**  
**ACIER 4.8 CUIVRÉ**  
**ACERO 4.8 COBREADO**

L ± 0,2	Ø D ± 0,05	R ± 0,2
9,5 - 203	2	30
9,5 - 203	2.7	30 - 38



**ACCIAIO 4.8 RAMATO**  
**STEEL 4.8 COPPER PLATED**  
**STAHL 4.8 VERKUPFERT**  
**ACIER 4.8 CUIVRÉ**  
**ACERO 4.8 COBREADO**

L	Ø D	Ø D1	R
20 - 150	2	1,8	38
20 - 150	2,6	2,4	38
20 - 150	3	2,8	38 - 60

**ACCIAIO INOX A2-50**  
**STAINLESS STEEL A2-50**  
**ROSTFREIER STAHL A2-50**  
**INOX A2-50**  
**INOX A2-50**

L	Ø D	Ø D1	R
20 - 150	2	1,8	38
20 - 150	2,6	2,4	38
20 - 150	3	2,8	38 - 60

# SALDATRICI A SCARICA DI CONDENSATORI

CAPACITOR DISCHARGE WELDERS

SCHWEISSGERÄTE FÜR SPITZENZÜNDUNG

SOUDEUSE PAR DÉCHARGE DE CONDENSATEURS

SOLDADOR POR DESCARGA

COD./CODE  
**03BB33**



Caratteristiche tecniche Technical features	
<b>Pezzi saldabili al minuto</b> <i>Weldable pieces per minute</i>	max 14 ÷ 45
<b>Dimensioni corpo macchina</b> <i>Machine body dimensions</i>	16x42x23
<b>Alimentazione</b> <i>Power supply</i>	230V - 50Hz
<b>Capacità</b> <i>Capacity</i>	33.000 µF
<b>Energia</b> <i>Electricity</i>	700 Joule
<b>Tempo max di ricarica</b> <i>Max recharging time</i>	5,5 sec.
<b>Potenza max assorbita</b> <i>Max power consumption</i>	500 W
<b>Grado di protezione</b> <i>Degree of protection</i>	IP 23
<b>Peso corpo macchina</b> <i>Machine body weight</i>	12,5 Kg

UTILIZZO CAPACITY			
FILETTO THREAD	ALLUMINIO ALUMINIUM	ACCIAIO STEEL	INOX STAINLESS STEEL
M3	●	●	●
M4	●	●	●
M5		●	

<b>CODICE</b> <i>CODE</i>	<b>Porta perni</b> <b>Chuck</b> <b>Bolzenhalter</b> <b>Mandrin</b> <b>Porta terminal</b>	
<b>04PPM3</b>		
<b>04PPM4</b>		
<b>04PPM5</b>		

<b>PORTA PERNI PER FASTON</b> <b>CHUCK FOR FASTON</b> <b>BOLZENHALTER FÜR FLACHSTECKER</b> <b>MANDRIN POUR COSSE</b> <b>PORTA TERMINAL PARA FASTON</b>		<b>04PF</b>
--------------------------------------------------------------------------------------------------------------------------------------------------------------------	--	-------------

<b>ANGOLARE</b> <b>CORNER CANTILEVER</b> <b>WINKELTRÄGER</b> <b>MANDRIN ANGULAIRE</b> <b>ESCUADRA</b>		<b>04A</b>
-------------------------------------------------------------------------------------------------------------------	--	------------



# SALDATRICI A SCARICA DI CONDENSATORI

## CAPACITOR DISCHARGE WELDERS

### SCHWEISSGERÄTE FÜR SPITZENZÜNDUNG

### SOUDEUSE PAR DÉCHARGE DE CONDENSATEURS

### SOLDADOR POR DESCARGA

CODICE/CODE  
**03BB70**



Caratteristiche tecniche Technical features	
<b>Pezzi saldabili al minuto</b> <i>Weldable pieces per minute</i>	7 ÷ 20
<b>Dimensioni corpo macchina</b> <i>Machine body dimensions</i>	16x42x23 cm
<b>Alimentazione</b> <i>Power supply</i>	230V - 50Hz
<b>Capacità</b> <i>Capacity</i>	66.000 uF
<b>Energia</b> <i>Electricity</i>	1.320 Joule
<b>Tempo max di ricarica</b> <i>Max recharging time</i>	5 sec.
<b>Potenza max assorbita</b> <i>Max power consumption</i>	600 W
<b>Grado di protezione</b> <i>Degree of protection</i>	IP 23
<b>Peso corpo macchina</b> <i>Machine body weight</i>	14,2 Kg


UTILIZZO CAPACITY			
FILETTO THREAD	ALLUMINIO ALUMINIUM	ACCIAIO STEEL	INOX STAINLESS STEEL
M3	●	●	●
M4	●	●	●
M5	●	●	●
M6	●	●	●
M8		●	

CODICE/CODE

**03BB702P**

DISPONIBILE LA VERSIONE 70 2P CON N. 2 PISTOLE  
70 2P VERSION AVAILABLE WITH TWO GUNS  
VERFÜGBAR VERSION 70 2P MIT 2 SCHWEISSPISTOLEN  
DISPONIBILE LA VERSION 70 2P AVEC 2 PISTOLETS  
DISPONIBILE LA VERSION 70 2P CON 2 PISTOLAS

**PESO / DIMENSIONI**  
WEIGHT / DIMENSION  
21,5 Kg. 30x36x24 Cm.

CODICE CODE	Porta perni Chuck
04PPM3	 Bolzenhalter Mandrin Porta terminal
04PPM4	
04PPM5	
04PPM6	
04PPM8	

#### PORTA PERNI PER FASTON

CHUCK FOR FASTON  
BOLZENHALTER FÜR FLACHSTECKER  
MANDRIN POUR COSSE  
PORTA TERMINAL PARA FASTON



04PF

#### ANGOLARE

CORNER CANTILEVER  
WINKELTRÄGER  
MANDRIN ANGULAIRE  
ESCUADRA



04A



# SALDATRICI A SCARICA DI CONDENSATORI

CAPACITOR DISCHARGE WELDERS

SCHWEISSGERÄTE FÜR SPITZENZÜNDUNG

SOUDEUSE PAR DÉCHARGE DE CONDENSATEURS

SOLDADOR POR DESCARGA

CODICE/CODE  
**03BB90**



Caratteristiche tecniche Technical features	
<b>Pezzi saldabili al minuto</b> <i>Weldable pieces per minute</i>	11 ÷ 35
<b>Dimensioni corpo macchina</b> <i>Machine body dimensions</i>	16x42x23 cm
<b>Alimentazione</b> <i>Power supply</i>	230V - 50/60 Hz
<b>Capacità</b> <i>Capacity</i>	99.000 uF
<b>Energia</b> <i>Electricity</i>	2.100 Joule
<b>Tempo max di ricarica</b> <i>Max recharging time</i>	5,5 sec.
<b>Potenza max assorbita</b> <i>Max power consumption</i>	900 W
<b>Grado di protezione</b> <i>Degree of protection</i>	IP 23
<b>Peso corpo macchina</b> <i>Machine body weight</i>	17 Kg


UTILIZZO CAPACITY			
FILETTO THREAD	ALLUMINIO ALUMINIUM	ACCIAIO STEEL	INOX STAINLESS STEEL
M3	●	●	●
M4	●	●	●
M5	●	●	●
M6	●	●	●
M8	●	●	●
M10		●	

CODICE/CODE

**03BB902P**

DISPONIBILE LA VERSIONE 90 2P CON N. 2 PISTOLE  
90 2P VERSION AVAILABLE WITH TWO GUNS  
VERFÜGBAR VERSION 90 2P MIT 2 SCHWEISSPISTOLEN  
DISPONIBLE LA VERSION 90 2P AVEC 2 PISTOLETS  
DISPONIBLE LA VERSION 90 2P CON 2 PISTOLAS

**PESO / DIMENSIONI**  
WEIGHT / DIMENSION  
21,5 Kg. 30x36x24 Cm.

CODICE CODE	Porta perni Chuck
04PPM3	 Bolzenhalter Mandrin Porta terminal
04PPM4	
04PPM5	
04PPM6	
04PPM8	
04PPM10	

### PORTA PERNI PER FASTON

CHUCK FOR FASTON  
BOLZENHALTER FÜR FLACHSTECKER  
MANDRIN POUR COSSE  
PORTA TERMINAL PARA FASTON



04PF

### ANGOLARE

CORNER CANTILEVER  
WINKELTRÄGER  
MANDRIN ANGULAIRE  
ESCUADRA



04A

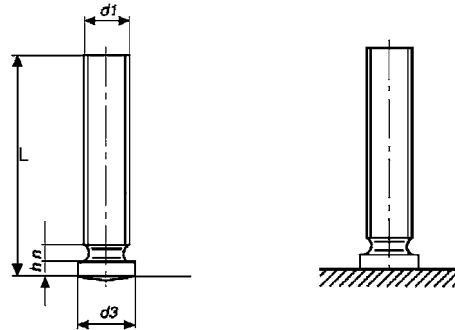
# PERNI A SALDARE AD ARCO CORTO

## DRAWN-ARC STUDS

## KURZZEITHUBZÜNDUNG BOLZEN

## GOUJONS À SOUDER EN ARC TEMPS COURT

## PERNOS SOLDADURA CON ARCO CORTO

**DIN EN ISO 13918**
**PS**


PRIMA DELLA SALDATURA  
BEFORE WELDING  
VOR DEM SCHWEISSEN  
AVANT SOUDAGE  
ANTES DE SOLDAR

DOPO LA SALDATURA  
AFTER WELDING  
NACH DEM SCHWEISSEN  
APRÈS SOUDAGE  
DESPUES DE SOLDAR

d1	M5	M6	M8	M10	M12
d3 ± 0,2	6	7	9	11	12,60
h	0,7 - 1,4		0,8 - 1,4		
n max	1		1,5	2	
L					

ACCIAIO 4.8 RAMATO STEEL 4.8 COPPER PLATED STAHL 4.8 VERKUPFERT ACIER 4.8 CUIVRÉ ACERO 4.8 COBREADO			ACCIAIO 4.8 RAMATO STEEL 4.8 COPPER PLATED STAHL 4.8 VERKUPFERT ACIER 4.8 CUIVRÉ ACERO 4.8 COBREADO			ACCIAIO INOX A2-50 STAINLESS STEEL A2-50 ROSTFREIER STAHL A2-50 INOX A2-50 INOX A2-50			ACCIAIO INOX A2-50 STAINLESS STEEL A2-50 ROSTFREIER STAHL A2-50 INOX A2-50 INOX A2-50		
Filetto Thread Size	Lunghezza Length	Codice Code	Filetto Thread Size	Lunghezza Length	Codice Code	Filetto Thread Size	Lunghezza Length	Codice Code	Filetto Thread Size	Lunghezza Length	Codice Code
M5	8	03ARPR508AC	M8	10	03ARPR810AC	M5	8	03IXPR508AC	M8	10	03IXPR810AC
	10	03ARPR510AC		12	03ARPR812AC		10	03IXPR510AC		12	03IXPR812AC
	12	03ARPR512AC		15	03ARPR815AC		12	03IXPR512AC		15	03IXPR815AC
	15	03ARPR515AC		16	03ARPR816AC		15	03IXPR515AC		16	03IXPR816AC
	16	03ARPR516AC		20	03ARPR820AC		16	03IXPR516AC		20	03IXPR820AC
	20	03ARPR520AC		25	03ARPR825AC		20	03IXPR520AC		25	03IXPR825AC
	25	03ARPR525AC		30	03ARPR830AC		25	03IXPR525AC		30	03IXPR830AC
	30	03ARPR530AC		35	03ARPR835AC		30	03IXPR530AC		35	03IXPR835AC
M6	10	03ARPR610AC	M10	40	03ARPR840AC	M6	10	03IXPR610AC	M10	40	03IXPR840AC
	12	03ARPR612AC		45	03ARPR845AC		12	03IXPR612AC		45	03IXPR845AC
	15	03ARPR615AC		12	03ARPR1012AC		15	03IXPR615AC		12	03IXPR1012AC
	16	03ARPR616AC		15	03ARPR1015AC		16	03IXPR616AC		15	03IXPR1015AC
	20	03ARPR620AC		16	03ARPR1016AC		20	03IXPR620AC		16	03IXPR1016AC
	25	03ARPR625AC	20	03ARPR1020AC	25		03IXPR625AC	20		03IXPR1020AC	
	30	03ARPR630AC	25	03ARPR1025AC	30		03IXPR630AC	25		03IXPR1025AC	
	35	03ARPR635AC	30	03ARPR1030AC	35		03IXPR635AC	30		03IXPR1030AC	
	40	03ARPR640AC	35	03ARPR1035AC	40		03IXPR640AC	35		03IXPR1035AC	
	45	03ARPR645AC	40	03ARPR1040AC	45		03IXPR645AC	40		03IXPR1040AC	
50	03ARPR650AC	M12	15	03ARPR1215AC	M6	50	03IXPR650AC	M12	15	03IXPR1215AC	
			16	03ARPR1216AC					16	03IXPR1216AC	
			20	03ARPR1220AC					20	03IXPR1220AC	
			25	03ARPR1225AC					25	03IXPR1225AC	
			30	03ARPR1230AC					30	03IXPR1230AC	
		35	03ARPR1235AC			35	03IXPR1235AC				
		40	03ARPR1240AC			40	03IXPR1240AC				

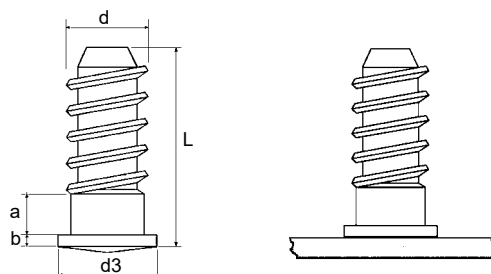
# PERNI SPECIALI A SALDARE AD ARCO CORTO

COARSE THREADED SHORT-CYCLE STUDS

GROBGEWINDEBOLZEN FÜR KURZZEITHUBZÜNDUNG

GOUJONS SAPIN À SOUDER EN ARC TEMPS COURT

PERNOS ESPECIALES PARA SOLDAR CON ARCO CORTO



PRIMA DELLA SALDATURA  
BEFORE WELDING  
VOR DEM SCHWEISSEN  
AVANT SOUDAGE  
ANTES DE SOLDAR

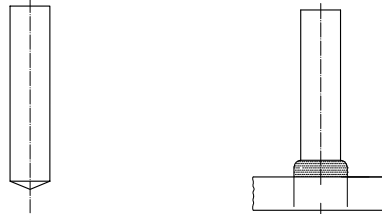
DOPO LA SALDATURA  
AFTER WELDING  
NACH DEM SCHWEISSEN  
APRÈS SOUDAGE  
DESPUES DE SOLDAR

d	5	5	5	5	5	5
d3 ± 0,2	6	6	6	6	6	6
b	0,6 - 1,4					
L +0,6	9	12	14,2	16,5	18	25

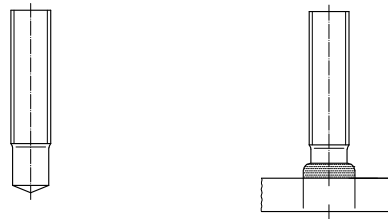
<b>ACCIAIO 4.8 RAMATO</b> STEEL 4.8 COPPER PLATED STAHL 4.8 VERKUPFERT ACIER 4.8 CUIVRE ACERO 4.8 COBREADO		
Ø	Lunghezza Length	Codice Code
5	9	03ARAN509
	12	03ARAN512
	14,2	03ARAN514
	16,5	03ARAN516
	18	03ARAN518
	25	03ARAN525

**A RICHIESTA**  
*ON DEMAND*  
*AUF ANFRAGE*  
*SUR DEMANDE*  
*BAJO SOLICITUD*

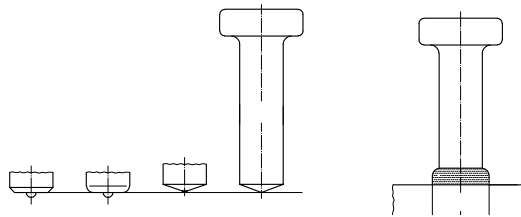
**DIN EN ISO 13918**  
**UD**



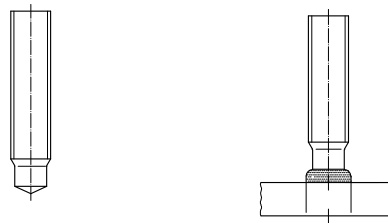
**DIN EN ISO 13918**  
**PD**



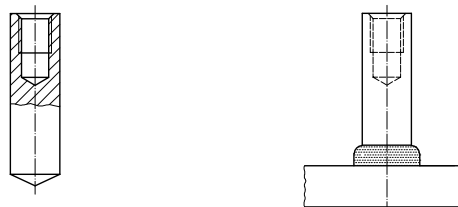
**DIN EN ISO 13918**  
**SD**



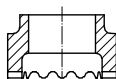
**DIN EN ISO 13918**  
**RD**



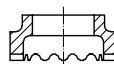
**DIN EN ISO 13918**  
**ID**



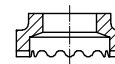
**DIN EN ISO 13918**  
**RF**



**DIN EN ISO 13918**  
**PF**



**DIN EN ISO 13918**  
**UF**



# SALDATRICE AD ARCO

ARC WELDER

SCHWEISSGERÄT FÜR HUBZÜNDUNG

SOUDEUSE EN ARC

SOLDADOR DE ARCO

CODICE/CODE

**03550**



Caratteristiche tecniche Technical features	
<b>Pezzi saldabili al minuto</b> <i>Weldable pieces per minute</i>	8 ÷ 25
<b>Dimensioni corpo macchina</b> <i>Machine body dimensions</i>	28x52x29 cm
<b>Alimentazione</b> <i>Power supply</i>	400V - 3 Ph - 50/60Hz
<b>Potenza max assorbita</b> <i>Max power consumption</i>	kW 17,0
<b>Grado di protezione</b> <i>Degree of protection</i>	IP 23
<b>Peso corpo macchina</b> <i>Machine body weight</i>	41 Kg

UTILIZZO CAPACITY			
FILETTO THREAD	ALLUMINIO ALUMINIUM	ACCIAIO STEEL	INOX STAINLESS STEEL
M4		●	●
M5		●	●
M6		●	●
M8		●	●
M10		●	●

# 4

22.28

**SALDATRICE AUTOMATICA**  
AUTOMATIC WELDING MACHINE  
AUTOMATISCHES SCHWEISSGERÄT  
SOUDEUSE AUTOMATIQUE  
UNIDAD DE SOLDADURA AUTOMÁTICA

CODICE/CODE

**03CNC2X1**



2.000 x 1.000

<b>Caratteristiche tecniche - Technical features</b>	
<b>Dimensioni area di lavoro</b> Work range	fino a 2.000 x 1.000 mm. up to 2.000 x 1.000 mm.
<b>Numero di saldatrici</b> Number of machines	1 saldatrice 1 welding machine
<b>Numero di teste</b> Number of heads	fino a 2 up to 2
<b>Numero di alimentatori automatici</b> Number of automatic feeders	fino a 2 up to 2
<b>Range di saldatura</b> Welding range	da M3 x 8 mm. a M10 x 40 mm. from M3 x 8 mm. to M10 x 40 mm.
<b>Velocità</b> Speed	280 mm./sec. (18 m./min.)
<b>Precisione</b> Precision	+/- 0.2 mm.
<b>Ripetibilità per foglio di lamiera</b> Repeatability on sheet metal	+/- 0.05 mm.
<b>N. di pezzi saldati al minuto</b> No. of pieces welded per minute	fino a 40 perni up to 40 studs

- **ASSI X-Y SERVO-ASSISTITI E PROGRAMMABILI (ASSE Z SU RICHIESTA)**
- **CONTROLLO E PROGRAMMAZIONE TRAMITE PC**
- **TOUCH-SCREEN DA 24"**
- **CONNESSIONE REMOTA TRAMITE WI-FI**
- **CARICAMENTO DEI PROGRAMMI TRAMITE USB O RETE WI-FI O ETHERNET**
- **NUMERO ILLIMITATO DI PROGRAMMI**
- **VARIABILI PER LA PROGRAMMAZIONE (COORDINATE, TESTE, POTENZA DI SALDATURA,) TRAMITE TOUCH-SCREEN O FILE EXCEL O CCV**
- **BARRIERE FOTOELETTRICHE DI SICUREZZA**
- **STAFFE PNEUMATICHE**
- **ADATTABILITA' DI UTENSILI UNIVERSALI: TORNITURA, APPLICAZIONI ADESIVE, ECC)**
- **COMPONENTI ELETTRICI E DI CONTROLLO DI ALTA QUALITA'**
- **CERTIFICATO CEE**
- **IN GRADO DI SALDARE TUTTI GLI ARTICOLI DELLA DIN 13918**

- **X-Y AXIS SERVO-CONTROLLED AND PROGRAMMABLE (Z AXIS ON DEMAND)**
- **PC-INDUSTRIAL, CONTROL AND PROGRAMMING**
- **24" TOUCH SCREEN**
- **REMOTE CONNECTION VIA WIFI**
- **LOADS PROGRAMS WITH USB, OR THROUGH WIFI NETWORK (WIFI, ETHERNET)**
- **UNLIMITED NUMBER OF PROGRAMS**
- **PROGRAMMING VARIABLES (COORDINATES, HEADS, WELDING POWER) VIA TOUCH PANEL, EXCEL TEMPLATE OR CCV FILES**
- **PHOTOELECTRIC SECURITY BARRIERS**
- **PNEUMATIC FLANGES**
- **POSSIBILITY OF ADAPTING UNIVERSAL TOOLS: MILLING MACHINES, ADHESIVE IMPLEMENTATIONS, ETC.**
- **UNIVERSAL HIGH-QUALITY ELECTRICAL COMPONENTS AND CONTROLS**
- **CEE CERTIFICATE**
- **ABLE TO WELD ALL ITEMS ACCORDING TO DIN 13918**

# 4

24.28

**SALDATRICE AUTOMATICA**  
AUTOMATIC WELDING MACHINE  
AUTOMATISCHES SCHWEISSGERÄT  
SOUDEUSE AUTOMATIQUE  
UNIDAD DE SOLDADURA AUTOMÁTICA

CODICE/CODE  
**03CNC3X15**



3.000 x 1.500



<b>Caratteristiche tecniche - Technical features</b>	
<b>Dimensioni area di lavoro</b> Work range	fino a 3.000 x 1.500 mm. up to 3.000 x 1.500 mm.
<b>Numero di saldatrici</b> Number of machines	fino a 4 saldatrici up to 4 welding machines
<b>Numero di teste</b> Number of heads	fino a 4 up to 4
<b>Numero di alimentatori automatici</b> Number of automatic feeders	fino a 4 up to 4
<b>Range di saldatura</b> Welding range	da M3 x 8 mm. a M10 x 40 mm. from M3 x 8 mm. to M10 x 40 mm.
<b>Velocità</b> Speed	1.200 mm./sec. (72 m./min.)
<b>Precisione</b> Precision	+/- 0.2 mm.
<b>Ripetibilità per foglio di lamiera</b> Repeatability on sheet metal	+/- 0.05 mm.
<b>N. di pezzi saldati al minuto</b> No. of pieces welded per minute	fino a 40 perni up to 40 studs

- **ASSI X-Y SERVO-ASSISTITI E PROGRAMMABILI (ASSE Z SU RICHIESTA)**
- **CONTROLLO E PROGRAMMAZIONE TRAMITE PC**
- **TOUCH-SCREEN DA 24"**
- **CONNESSIONE REMOTA TRAMITE WI-FI**
- **CARICAMENTO DEI PROGRAMMI TRAMITE USB O RETE WI-FI O ETHERNET**
- **NUMERO ILLIMITATO DI PROGRAMMI**
- **VARIABILI PER LA PROGRAMMAZIONE (COORDINATE, TESTE, POTENZA DI SALDATURA,) TRAMITE TOUCH-SCREEN O FILE EXCEL O CCV**
- **BARRIERE FOTOELETTRICHE DI SICUREZZA**
- **STAFFE PNEUMATICHE**
- **ADATTABILITA' DI UTENSILI UNIVERSALI: TORNITURA, APPLICAZIONI ADESIVE, ECC)**
- **COMPONENTI ELETTRICI E DI CONTROLLO DI ALTA QUALITA'**
- **CERTIFICATO CEE**
- **IN GRADO DI SALDARE TUTTI GLI ARTICOLI DELLA DIN 13918**

- **X-Y AXIS SERVO-CONTROLLED AND PROGRAMMABLE (Z AXIS ON DEMAND)**
- **PC-INDUSTRIAL, CONTROL AND PROGRAMMING**
- **24" TOUCH SCREEN**
- **REMOTE CONNECTION VIA WIFI**
- **LOADS PROGRAMS WITH USB, OR THROUGH WIFI NETWORK (WIFI, ETHERNET)**
- **UNLIMITED NUMBER OF PROGRAMS**
- **PROGRAMMING VARIABLES (COORDINATES, HEADS, WELDING POWER) VIA TOUCH PANEL, EXCEL TEMPLATE OR CCV FILES**
- **PHOTOELECTRIC SECURITY BARRIERS**
- **PNEUMATIC FLANGES**
- **POSSIBILITY OF ADAPTING UNIVERSAL TOOLS: MILLING MACHINES, ADHESIVE IMPLEMENTATIONS, ETC.**
- **UNIVERSAL HIGH-QUALITY ELECTRICAL COMPONENTS AND CONTROLS**
- **CEE CERTIFICATE**
- **ABLE TO WELD ALL ITEMS ACCORDING TO DIN 13918**



## Fasteners for sheet metal - Fissaggi per lamiera

### BLIND RIVETS - RIVETTI A STRAPPO



### THREADED INSERTS - INSERTI FILETTATI



### SELF CLINCHING FASTENERS - AUTOFISSANTI



## Fasteners for solid parts - Fissaggi per parti solide

### SELF-TAPPING AND WIRE INSERTS - BUSSOLE AUTOFILETTANTI E FILETTI RIPORTATI



## Fasteners for plastics - Fissaggi per la plastica

### BRASS INSERTS - INSERTI IN OTTONE



## Fasteners for tubes - Fissaggi per tubi

### INSERTS FOR TUBES - INSERTI PER TUBI





**RIVETTI A STRAPPO**  
*BLIND RIVETS*



**INSERTI FILETTATI**  
*THREADED INSERTS*



**AUTOFISSANTI**  
*SELF-CLINCHING FASTENERS*



**FISSAGGI PER MATERIE PLASTICHE**  
*FASTENERS FOR PLASTICS*



**FILETTI RIPORTATI**  
*WIRE INSERTS*



**INSERTI PER TUBI**  
*INSERTS FOR TUBES*

# **FIXI**<sup>®</sup>

**FASTENING SYSTEMS**

Via Bellardi, 40/A - 10146 Torino (Italy)  
Tel. 0039 011.7072398 / 7070877 - Fax 0039 011.7072521  
E-mail: [fissaggi@fixi.it](mailto:fissaggi@fixi.it) - [www.fixi.it](http://www.fixi.it)

## **FIXI**<sup>®</sup> **VAL**

**VALLE D'AOSTA - PIEMONTE - LIGURIA**

Via Valgioie, 94 - 10146 Torino Italy  
Tel. 0039 011.0882009 - Fax 0039 011.0882012  
E-mail: [info@fixivpl.it](mailto:info@fixivpl.it) - [www.fixi.it](http://www.fixi.it)

## **FIXI**<sup>®</sup> **FL**

**LOMBARDIA - CANTON TICINO**

Via Delle Gallarane, 10/12 - 22046 Merone (CO) Italy  
Tel. 0039 031.3333486 - Fax 0039 031.3339064  
E-mail: [info@fixilombardia.it](mailto:info@fixilombardia.it) - [www.fixi.it](http://www.fixi.it)

## **FIXI**<sup>®</sup> **3V**

**TRENTINO - VENETO - FRIULI**

Via Keplero, 4G/H - Z.I. di Tognana - 35028 Piove di Sacco (PD) Italy  
Tel. 0039 049.8079285 - Fax 0039 049.8087725  
E-mail: [trevenezie@fixitrevenezie.it](mailto:trevenezie@fixitrevenezie.it) - [www.fixi.it](http://www.fixi.it)

## **FIXI**<sup>®</sup> **ets**

**EMILIA ROMAGNA - TOSCANA - SARDEGNA**

Via Secci, 4 - 40132 Bologna Italy  
Tel. 0039 051.0353243 - Fax 0039 051.0353244  
E-mail: [amministrazione@fixiets.it](mailto:amministrazione@fixiets.it) - [www.fixi.it](http://www.fixi.it)

## **FIXI**<sup>®</sup> **u.g**

**MARCHE - UMBRIA - ABRUZZO - MOLISE**

Via Roma, 10 - 63078 Fr. Pagliare del Tronto Spinetoli (AP) Italy  
Tel. 0039 0736.814110 - Fax 0039 0736.984002  
E-mail: [info@fixiua.it](mailto:info@fixiua.it) - [www.fixi.it](http://www.fixi.it)

## **FIXI**<sup>®</sup> **csi**

**CENTRO SUD ITALIA**

Via Arno, 50 - 63082 Castel di Lama (AP) (ITALY)  
Tel. 0039 0736.812922 - Fax 0039 0736.812922  
E-mail: [info@fixicentrosud.it](mailto:info@fixicentrosud.it) - [www.fixi.it](http://www.fixi.it)

