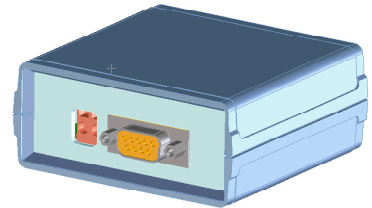


## S-BUS Converter

The S-Bus converter is designed to convert the LEM proprietary Sentinel & I-Link communication bus (S-Bus & I-Bus) to RS-232 interface.



### Electrical data

|       |                              |      |     |
|-------|------------------------------|------|-----|
| $V_c$ | DC supply voltage $\pm 10\%$ | + 24 | V   |
| $I_c$ | Max. DC current consumption  | 100  | mA  |
|       | Transmission speed           | 9600 | bps |

### Interfaces

|   |   |
|---|---|
| RJ10 connectors for the S-Bus                 | 2 |
| D- Sub 9 female connector for RS232 interface | 1 |
| 2 terminal connector for power supply         | 1 |
| LED power indication                          | 1 |

### General data

|       |  |   |    |
|-------|--|---|----|
| $T_A$ | Ambient operating temperature            | - 10 .. + 70  | °C |
| $T_S$ | Ambient storage temperature              | - 25 .. + 85  | °C |
|       | Altitude                                 | up to 2000  | m  |
|       | Max relative humidity without condensing | 85  | %  |
| $m$   | Mass                                     | 105   | g  |
|       | Standards                                | EN 50178: 1997<br>EN 50121-5<br>EN 61000-4-16<br>EN 61010-1: 2001 |    |

### Isolation characteristics

This device is a SELV <sup>1)</sup> device.  
It must use an external power supply complying with limited energy circuit criteria and SELV conditions.

### Features

- Interface to the Sentinel
- Interface with OEM equipment
- LED status indicators
- Immunity to electrical interference.

### Applications

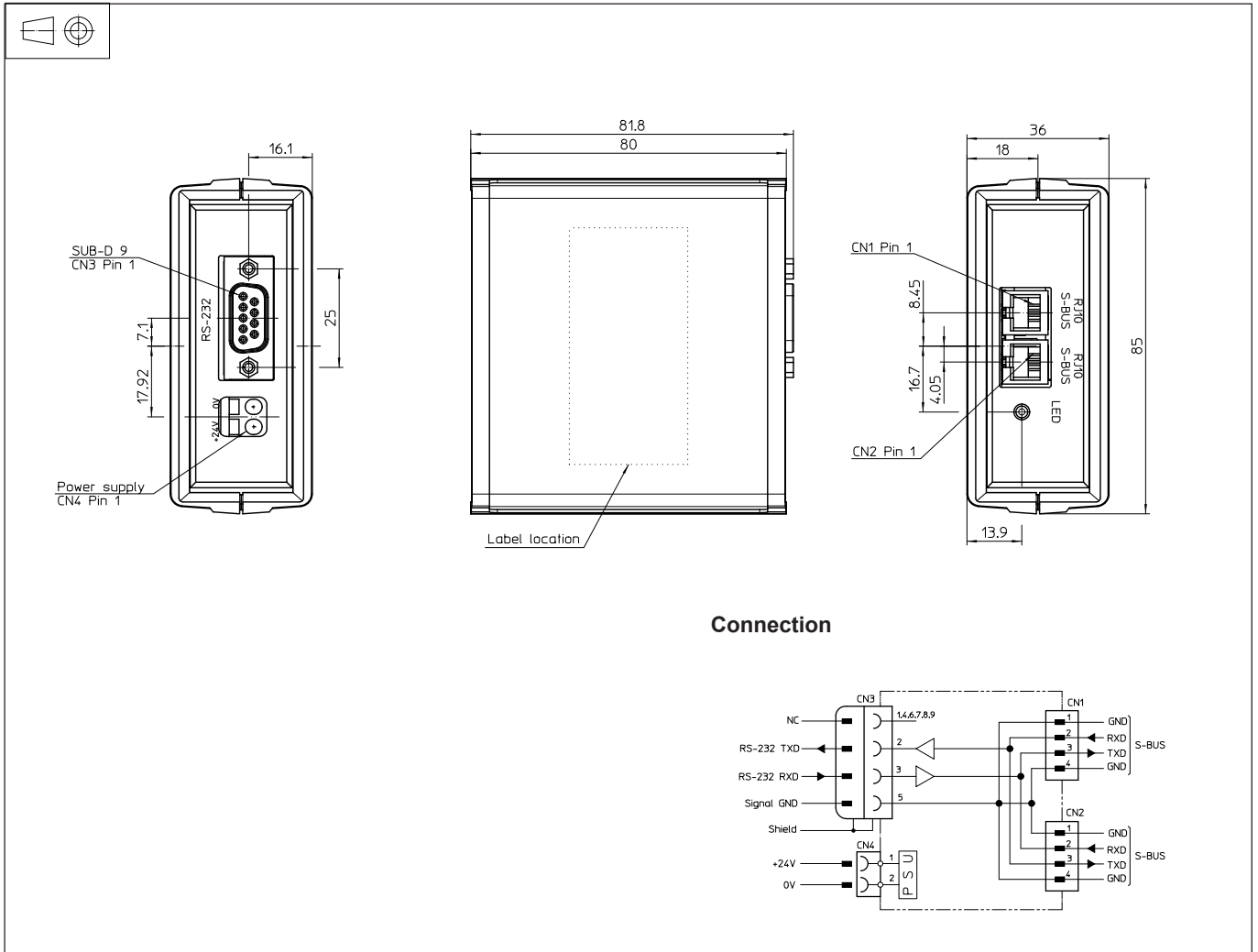
- UPS
- Telecommunications
- Battery supplied applications
- Utilities
- Fire & Safety system
- Remote monitoring.

### Application Domains

- Energy & Automation and Industrial.

Note: <sup>1)</sup> SELV: Safety Extra Low Voltage.

## Dimensions S-Bus Converter (in mm.)



### Connection

### Mechanical characteristics

- General tolerance  $\pm 0.3$  mm
- Module fastening  
Use the double sided tape (included). LEM does not guarantee the performance of the adhesive tape. For harsh condition of vibration and/or environment, please use an appropriate mechanical device to faster the S-BUS converter.

### Safety



This transducer must be used an electric/electronic equipment with respect to applicable standards and safety requirements in accordance with the manufacturer's operating instructions.