

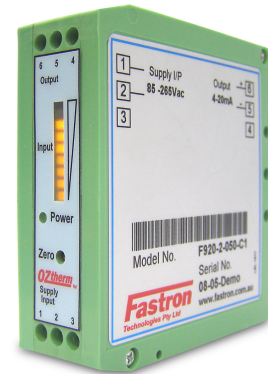
F920 – Current Transducer Module with process outputs



Isolated measurement of AC and DC currents using a Hall effect transducer with external aperture.

Incorporates an integrated input level display and power supply.

Choice standard process level outputs.



Electrical Data

I_{measure}	Current measuring range	100mA to 400A
Output	Conditioned signal (400ms response)	0 – 5V, 0 - 10V 0 - 20mA, 4 - 20mA
	Zero adjustment range	±10%
	Over-range	+20%
I_{in}	Supply current (maximum)	150mA(max)
V_{in}	Operating voltage	9-36V _{DC} or 18-72V _{DC}

Accuracy

X	Accuracy @ 25°C	<±1%
E	Linearity	<0.15%
f	Bandwidth (-3dB)	1kHz

Environment

T_A	Operating temperature Range	0-70°C
M	Mass	150gms

Mechanical Details

Rating	IP40
Size	79(H) x 40(W) x 85(D)
Material	Polyamide

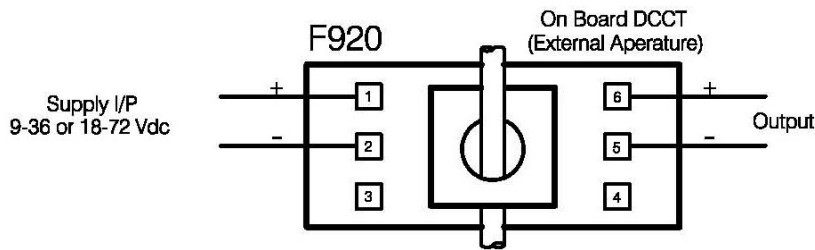
Features

- Wide measurement range available
- Choice of standard outputs
- Wide range isolated DC input supply
- DIN Rail mounting
- Choice of average sensing AC or DC outputs
- On board bar graph display
- User adjustable zero offset and span controls
- Zero insertion loss in current measurement path
- Earth leakage via differential I_{pn} for nominal Input '01'
- Fast Response (10mS) available for DC models

Applications

- Process control
- Transportation
- Petrochemical
- Industrial
- Energy
- Automation
- Earth Leakage

Installation



Ordering

F920	A	01	20AC	V1
------	---	----	------	----

Output

- C1 = 4-20mA
- C2 = 0-20mA
- V1 = 0-5V
- V2 = 0-10V (Default Output)

AC Average RMS or DC Span Preset

Nominal Input (Span Adjustment Range) Sensor

01 = 0 ~ 300mA	(100 ~ 300mA)	CT 0.1-P
02 = 0 ~ 600mA	(200 ~ 600mA)	CT 0.3-P
03 = 0 ~ 1000mA	(400 ~ 1000mA)	CT 1-P
04 = 0 ~ 25A	(10 ~ 25A)	LA 25-P
05 = 0 ~ 50A	(40 ~ 50A)	LA 55-P
06 = 0 ~ 100A	(40 ~ 100A)	LA 100-P
07 = 0 ~ 50A	(20 ~ 50A)	HTB 50-P
08 = 0 ~ 100A	(40 ~ 100A)	HTB 100-P
09 = 0 ~ 200A	(80 ~ 200A)	HTB 200-P
10 = 0 ~ 300A	(120 ~ 300A)	HTB 300-P
11 = 0 ~ 400A	(160 ~ 400A)	HTB 400-P
XX = External +/-15VDC Sensor		Not Included

Supply I/P

- A = 12/24V_{DC} (9-36V)
- B = 48V_{DC} (18-72V)

If the functionality you require is not contained within this specification please contact Fastron Electronics, other options are continually being developed and we specialise in supplying non-standard or custom solutions. We reserve the right to change the specification without notice.



ABN 38 622 808 137

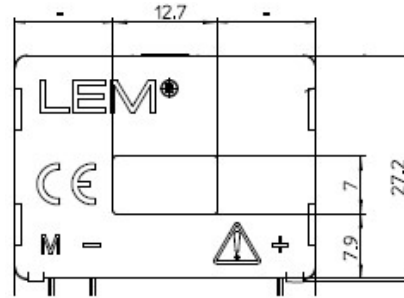
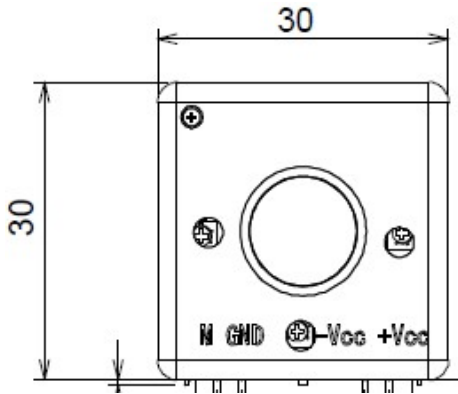
9B Lakewood Bvd Braeside, Melbourne, Victoria, Australia, 3195
 Tel: +613-9763 5155
 Mob: +61-434078226
 Email: Sales@fastron.com.au
 Web: www.fastron.com.au



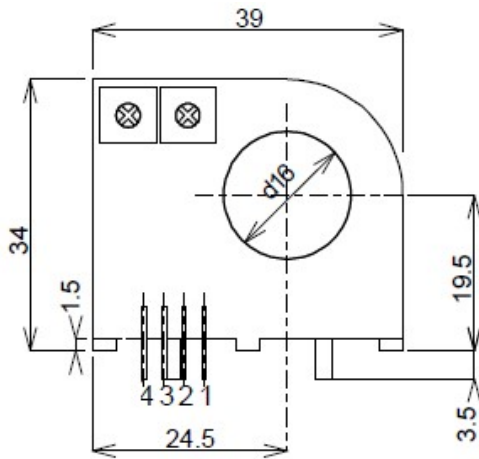
Sensor/Aperture Dimensions

CT 0.1-P, CT 0.3-P, CT 1-P

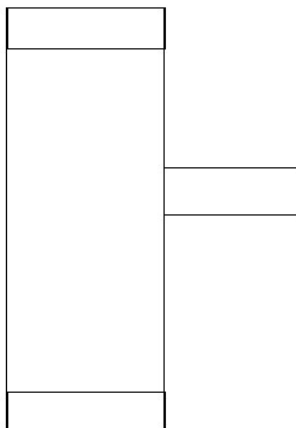
LA 25-P, LA55-P, LA 100-P



HTB 100-P, HTB 200-P, HTB 300-P, HTB 400-P



SIDE VIEW



TOP VIEW

