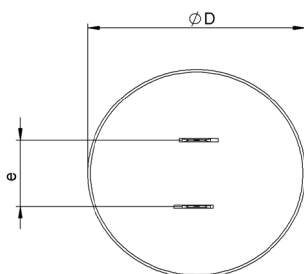
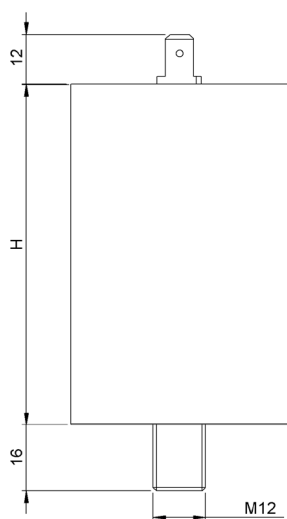


#6711

METALLIZED POLYPROPYLENE CAPACITORS

PAM 140-068 cv2 K



Dielectric of metallized polypropylene

FAST-ON 6.3 x 0.8 mm

Resin end sealing

Aluminium case

Parameter	Symbol	Value	Unit	Condition
Capacitance	C	0.68	μF	1 V / 1 kHz
Tolerance		± 10	%	
Rated voltage	Un	1400	VAC	
Rated voltage	Un RMS	1000	V RMS	
Peak voltage	Ucr	2100	V	
Surge voltage	Us	4200	V	
RMS Current	I _{eff max.}	18	A _{eff}	
Repetitive peak current	I _{cr. max}	340	A	
Tangent delta	tg δ	≤ 4	10^{-4}	1 V / 1 kHz
Tangent delta	tg δ	≤ 5	10^{-4}	1 V / 10 kHz
Stray inductance	ESL	≤ 80	nH	
Insulation resistance	Ri	$> 50\,000$	M Ω	500 VDC - 1 min
Test voltage between terminals	U T1	2128	VAC	50 Hz / 10 s
Test voltage terminals to case	U T2	3000	VAC	50 Hz / 60 s.
Operating temperature		-25 ... +70	$^{\circ}\text{C}$	

Dimension	Symbol	Value	Unit	Conditions
Diameter	D	50	mm	
Height	H	82 +1/-0	mm	
Terminals				
fast-on		6.3 x 0.8	mm	
fixing stud		M12 x 16	mm	
Raster	e	16 \pm 1.2	mm	

M1			
M0			
Modification	Date	Visa	émetteur

Condensateurs CH 1400 Yverdon, Switzerland
 Kondensatoren Tel.: ++41 24 445 66 88
 Capacitors Fax: ++41 24 445 66 89

Leclanché
Capacitors
A FRICKER & TALESCHE COMPANY

HJJ

www.Lcap.ch
 10.07.2018

capinfo@Lcap.ch
 faisab6711.XLS