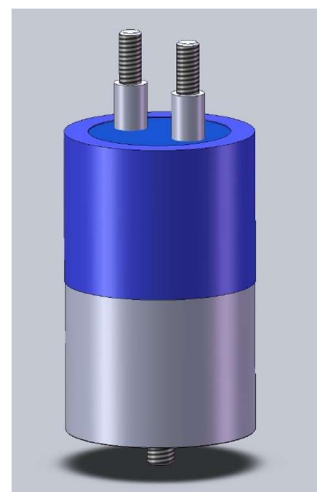
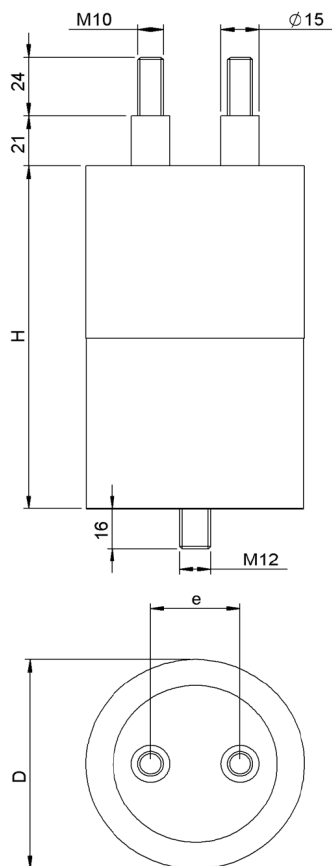


#6734

METALLIZED POLYPROPYLENE CAPACITORS

PPM 120-60.0 cv5 J



Dielectric of metallized polypropylene

Threaded outputs

Filled with resin polyurethane

No liquid impregnants

Without internal fuse

Aluminium case

| Parameter | Symbol | Value | Unit | Condition |
|--------------------------------|-------------|---------------|--------------------|-----------------|
| Capacitance | C | 60 | μF | 1 V / 100 Hz |
| Tolerance | | ± 10 | % | |
| Rated voltage | Un AC | 1200 | VDC | |
| Rated voltage | Un AC | 550 | VAC | |
| Peak voltage | U cr. | 1600 | V | |
| Repetitive current | I cr. max | 1800 | A | |
| RMS current | I RMS max. | 70 | Aeff | |
| Tangent delta | tg δ | ≤ 10.0 | 10-4 | 1 V / 1 kHz |
| Equivalent serie resistance | ESR | ≤ 2.0 | m Ω | 1 V / 10 kHz |
| Stray inductance | ESL | ≤ 45 | nH | |
| Insulation resistance | Ri | ≥ 700 | M Ω | 500 VDC - 1 min |
| Test voltage between terminals | U T1 | 825 | VAC | 10 s. |
| Test voltage terminals to case | U T2 | 4000 | VAC | 50 Hz / 60 s. |
| Ambiant temperature | | - 40 ... + 70 | $^{\circ}\text{C}$ | |

| Dimension | Symbol | Value | Unit | Conditions |
|----------------|--------|-------------|------|------------|
| Diameter | D | 85 | mm | |
| Height | H | 260 \pm 2 | mm | |
| Terminals | | | | |
| Thread | | M10 x 24 | mm | |
| Thread spacing | e | 35 \pm 1 | mm | |
| Fixing stud | | M12 x 16 | mm | |

| | | | | |
|--|--------------|------|---------------|--|
| | M1 | | | |
| | M0 | | | |
| | Modification | Date | Visa émetteur | |

Condensateurs CH 1400 Yverdon-les-Bains
 Kondensatoren Tel.: ++41 24 445 66 88
 Capacitors Fax: ++41 24 445 66 89

Lecranché
Capacitors
UNIVERSITÄT SÄTTERGÅRDEN

HJJ

www.Lcap.ch
 22.10.2018

capinfo@Lcap.ch
 faisab6734.XLS