

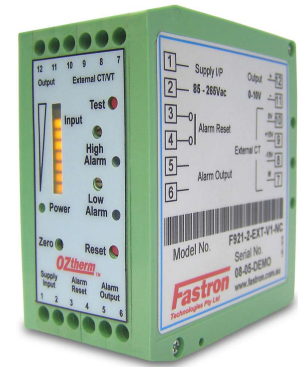
# F921 – Current Transducer Module with trip and process outputs



Isolated measurement of AC or DC currents using an on-board or external Hall effect transducer.

The module incorporates an integrated input level display and power supply.

Choice of standard process level outputs and user adjustable upper and lower alarm trip points with or without latching alarm.



## Electrical Data

<b>I<sub>measure</sub></b>	Current measuring range	100mA to 400A ac/dc
<b>Output</b>	Conditioned signal (AC: 400ms DC: 10mS)	0 - 5V, 0 - 10V 0 – 20mA, 4 - 20mA
	Zero adjustment range	±10%
	Over-range	+20%
<b>I<sub>in</sub></b>	Supply current (maximum)	150mA <sub>DC</sub>
<b>V<sub>in</sub></b>	Operating voltage	9 - 36V <sub>DC</sub> or 18 - 72V <sub>DC</sub>
<b>VL/IL</b>	Relay Output	30Vdc at 4A 250Vac at 0.5A
	Solid State Contactor Output	60Vac at 2A 40Vdc at 2A

## Accuracy

<b>X</b>	Accuracy @ 25°C	<±1%
<b>E</b>	Linearity	<0.15%
<b>f</b>	Bandwidth (-3dB)	1kHz

## Environment

<b>T<sub>A</sub></b>	Operating temperature Range	-10 to +70°C
<b>M</b>	Mass	200gms

## Mechanical Details

<b>Rating</b>	IP40
<b>Size</b>	79(H) x 40(W) x 85(D)
<b>Material</b>	Polyamide

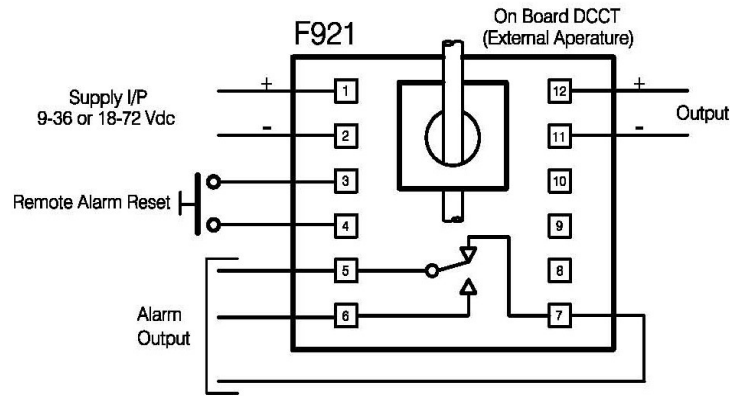
## Features

- Wide measurement range available
- Choice of standard outputs
- Choice of wide range isolated DC input supply
- DIN Rail mounting
- Choice of average sensing AC or DC outputs
- On board bar graph display
- User adjustable zero offset and span controls
- Zero insertion loss in current measurement path
- Adjustable upper and lower trip points
- Choice of local or remote alarm resets
- Earth Leakage Detection
- Fast Response (10mS) available for DC models

## Applications

- Process control
- Transportation
- Petrochemical
- Industrial
- Energy
- Automation
- Earth/Ground Fault

## Installation



## Ordering

F921	A	01	20AC	V1	N	C/O
------	---	----	------	----	---	-----

### Alarm Relay

C/O = Changeover Relay

S = Solid State Contactor

L = Latched Alarm (Relay only)

N = Non Latched Alarm

### Output

C1 = 4-20mA

C2 = 0-20mA

V1 = 0-5V

V2 = 0-10V (Default Output)

AC Average RMS or DC Span Preset

### Nominal Input (Span Adjustment Range)

Sensor

01 = 0 ~ 100mA (100 ~ 200mA)

CT 0.1-P

02 = 0 ~ 200mA (200 ~ 400mA)

CT 0.3-P

03 = 0 ~ 400mA (400 ~ 800mA)

CT 1-P

04 = 0 ~ 25A (10 ~ 25A)

LA 25-P

05 = 0 ~ 50A (20 ~ 50A)

LA 55-P

06 = 0 ~ 100A (40 ~ 100A)

LA 100-P

07 = 0 ~ 50A (20 ~ 50A)

HTB 50-P

08 = 0 ~ 100A (40 ~ 100A)

HTB 100-P

09 = 0 ~ 200A (80 ~ 200A)

HTB 200-P

10 = 0 ~ 300A (120 ~ 300A)

HTB 300-P

11 = 0 ~ 400A (160 ~ 400A)

HTB 400-P

XX = External +/-15VDC Sensor

Not Included

### Supply I/P

A = 12/24V<sub>DC</sub> (9-36V)

B = 48V<sub>DC</sub> (18-72V)

If the functionality you require is not contained within this specification please contact Fastron Electronics, other options are continually being developed and we specialise in supplying non-standard or custom solutions.

We reserve the right to change the specification without notice.

**Fastron**  
Electronics

ABN 38 622 808 137

9B Lakewood Bvd Braeside, Melbourne, Victoria, Australia, 3195

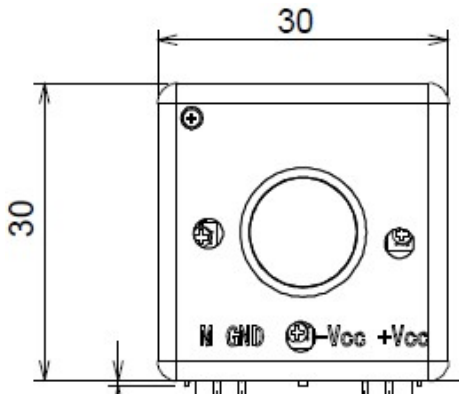
Tel: +613-9763 5155  
Mob: +61-434078226

Email: [Sales@fastron.com.au](mailto:Sales@fastron.com.au)  
Web: [www.fastron.com.au](http://www.fastron.com.au)

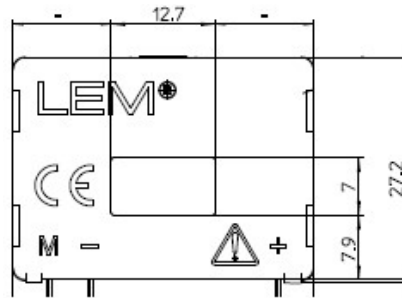


## Sensor/Aperture Dimensions

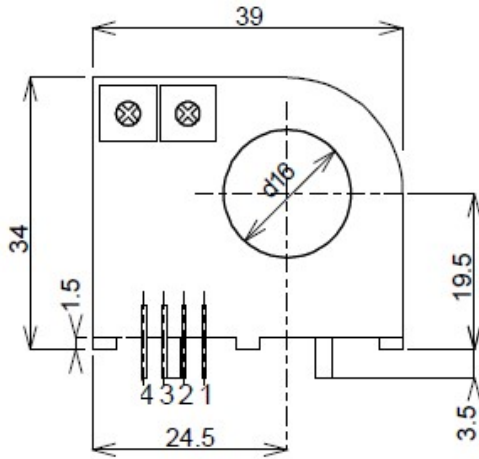
CT 0.1-P, CT 0.3-P, CT 1-P



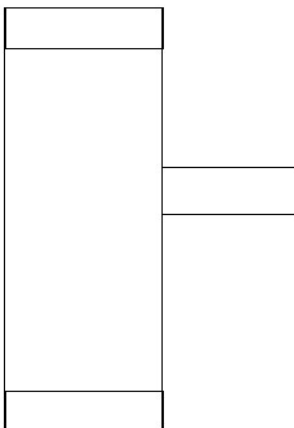
LA 25-P, LA55-P, LA 100-P



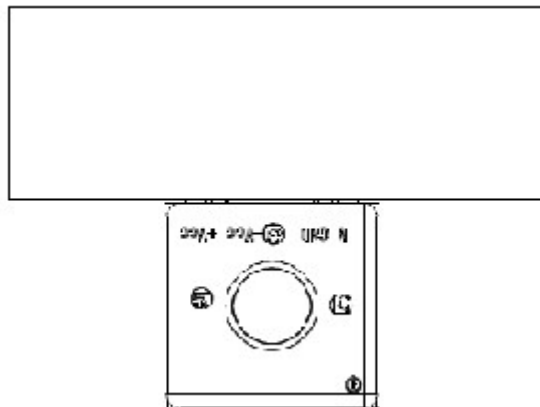
HTB 100-P, HTB 200-P, HTB 300-P, HTB 400-P



SIDE VIEW



TOP VIEW



**Fastron**  
Electronics

ABN 38 622 808 137

9B Lakewood Bvd Braeside, Melbourne, Victoria, Australia, 3195

Tel: +613-9763 5155  
Mob: +61-434078226

Email: [Sales@fastron.com.au](mailto:Sales@fastron.com.au)  
Web: [www.fastron.com.au](http://www.fastron.com.au)

