



Key Parameters

V_{RRM}	= 1800V
$I_{F(AV)}$	= 16A
I_{FSM}	= 350A
$V_{F(TO)}$	= 0.85V
r_F	= 11m Ω

Features

- Full blocking capability over wide temperature range
- Hermetic metal case with glass insulator
- Threaded stud

Applications

- Power Supplies
- Uncontrolled Rectifiers
- Battery Chargers

Ordering Information

MS D	16	N	X X	M	B
Rectifier Diode	Current code	Polarity R= Stud Anode N= Stud Cathode	Voltage Code Code X 100 = V_{RRM}	Stud Threads M = Stud M6 X 1 U = 10-32 UNF	Technology B = Solder Bond Technology
Order Code MS D16N16MB : 1600V V_{RRM} , Metric Stud, Diode with stud Cathode					

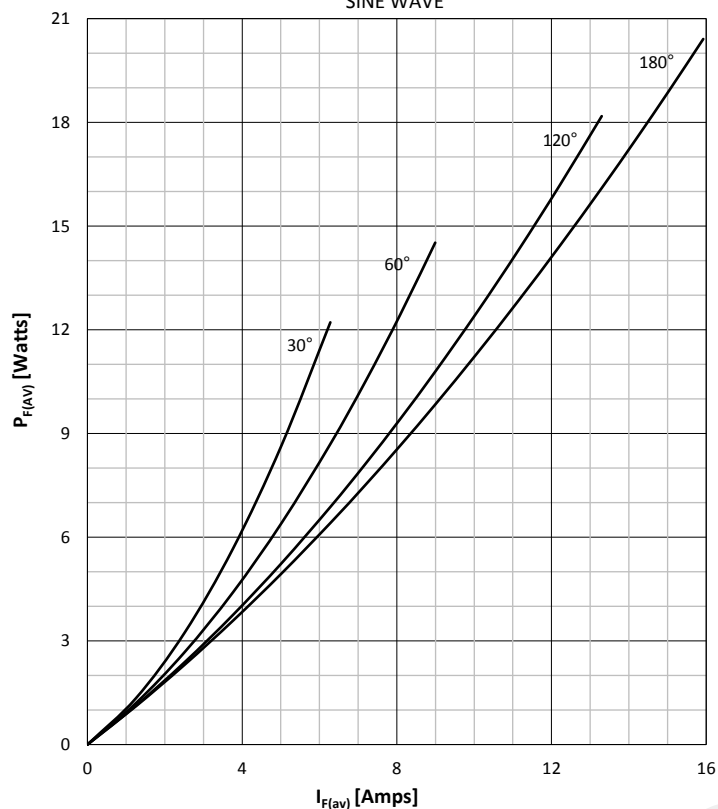
Prepared by : ABA	Date of Publication : 20.12.2016
Approved by : RBS	Revision : 0

Symbol	Characteristic	Conditions	T _j [°C]	Value	Unit
BLOCKING					
V _{RRM}	Repetitive peak reverse voltage		180	200 - 1800	V
V _{RSM}	Non-repetitive peak reverse voltage		180	300 - 1900	V
I _{RRM}	Repetitive peak reverse current	V = V _{RRM}	180	5	mA
CONDUCTING					
I _F (AV)	Mean forward current	180° sin ,50 Hz, T _c =125°C		16	A
I _{FRMS}	RMS current			25	A
I _{FSM}	Surge forward current	Sine wave, 10 ms Without reverse voltage	25	350	A
			180	300	A
I ² t	I ² t	Sine wave, 10 ms Without reverse voltage	25	612	A ² s
			180	450	A ² s
V _F	Forward voltage	On-state current = 60A	25	1.55	V
V _{F(TO)}	Threshold voltage		180	0.85	V
r _F	Forward slope resistance		180	11.0	mΩ
MOUNTING					
R _{th(j-c)}	Thermal impedance, sin 180°	Junction to case		2.7	°C/W
R _{th(c-h)}	Thermal impedance	Case to heatsink		1.0	°C/W
T _j	Max. junction temperature			180	°C
T _{stg}	Storage temperature			-40 180	°C
M	Mounting torque			2	NM
W	Weight (Approx.)			5.5	gm

Prepared by : ABA	Date of Publication : 20.12.2016
Approved by : RBS	Revision : 0

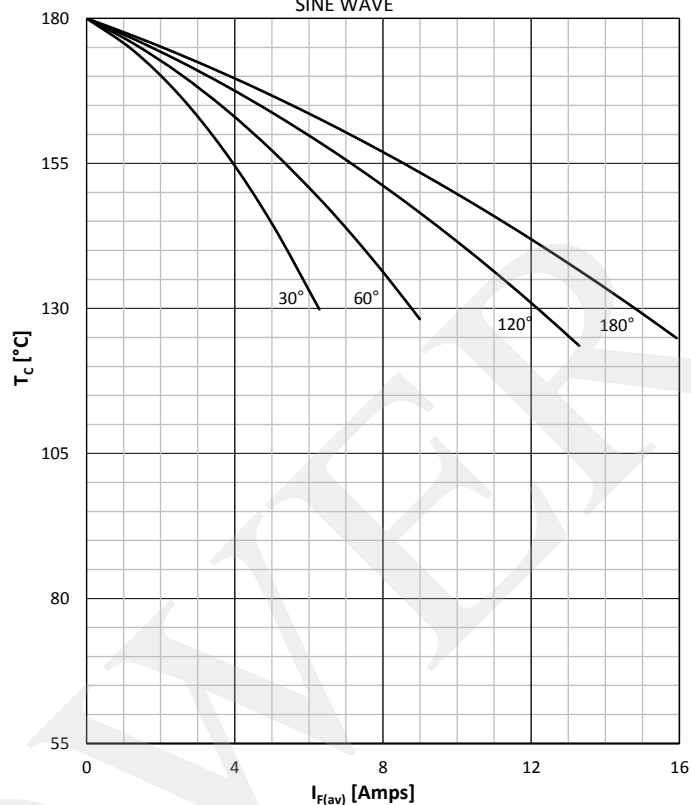
DISSIPATION CHARACTERISTICS

SINE WAVE



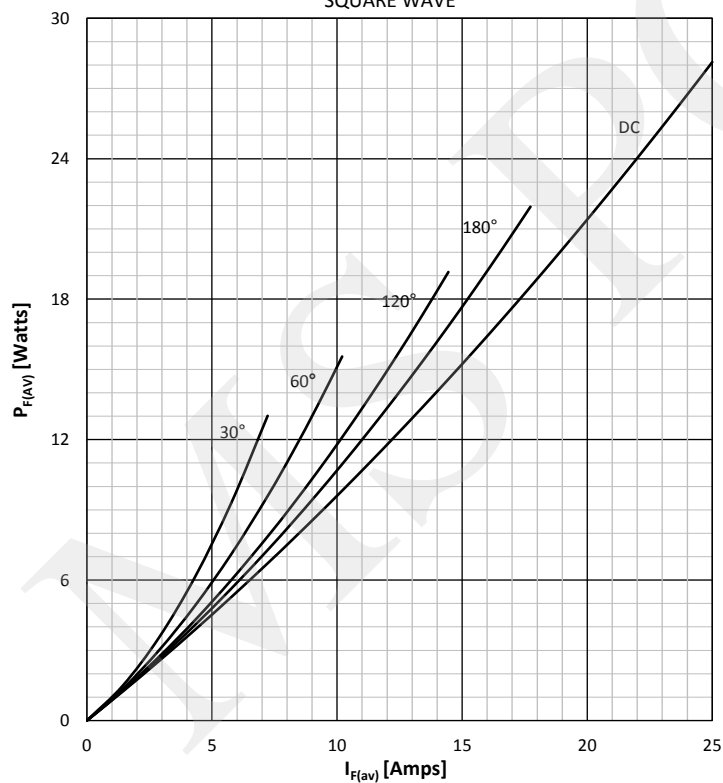
FORWARD CURRENT DERATING CURVE

SINE WAVE



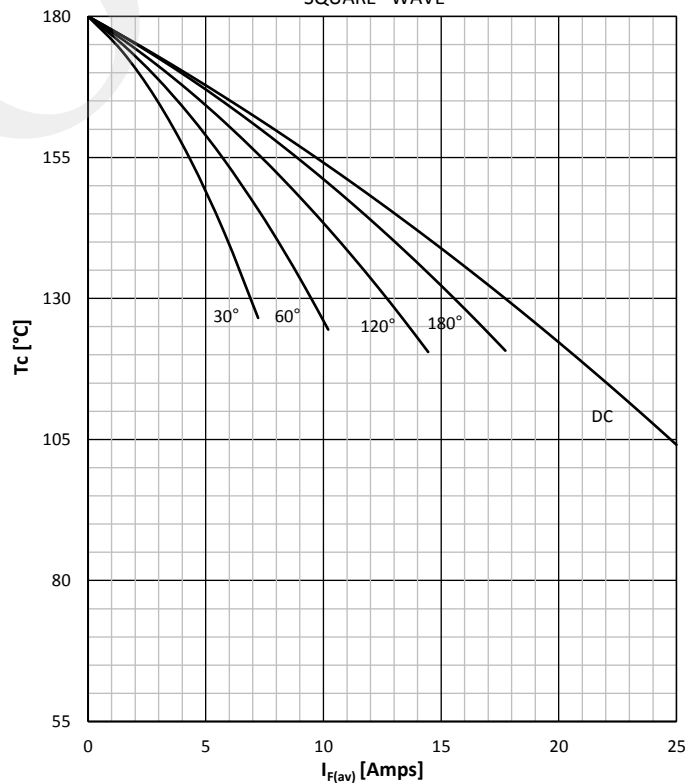
DISSIPATION CHARACTERISTICS

SQUARE WAVE



FORWARD CURRENT DERATING CURVE

SQUARE WAVE



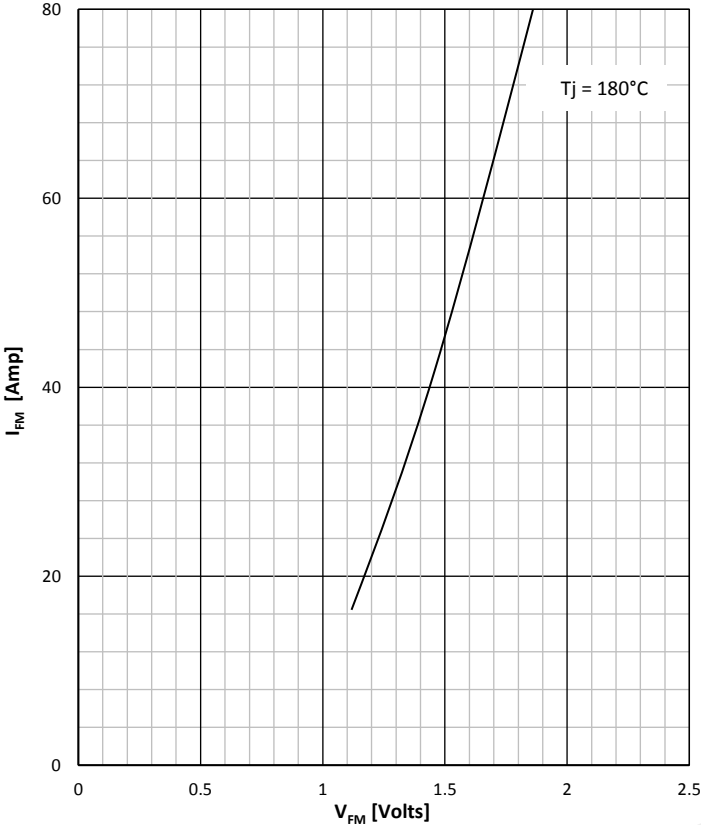
Prepared by : ABA

Date of Publication : 20.12.2016

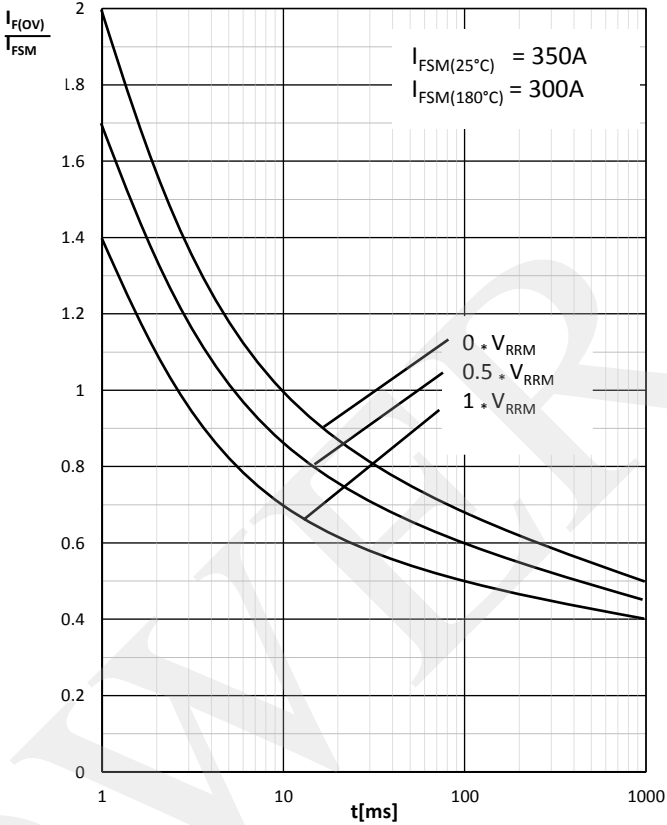
Approved by : RBS

Revision : 0

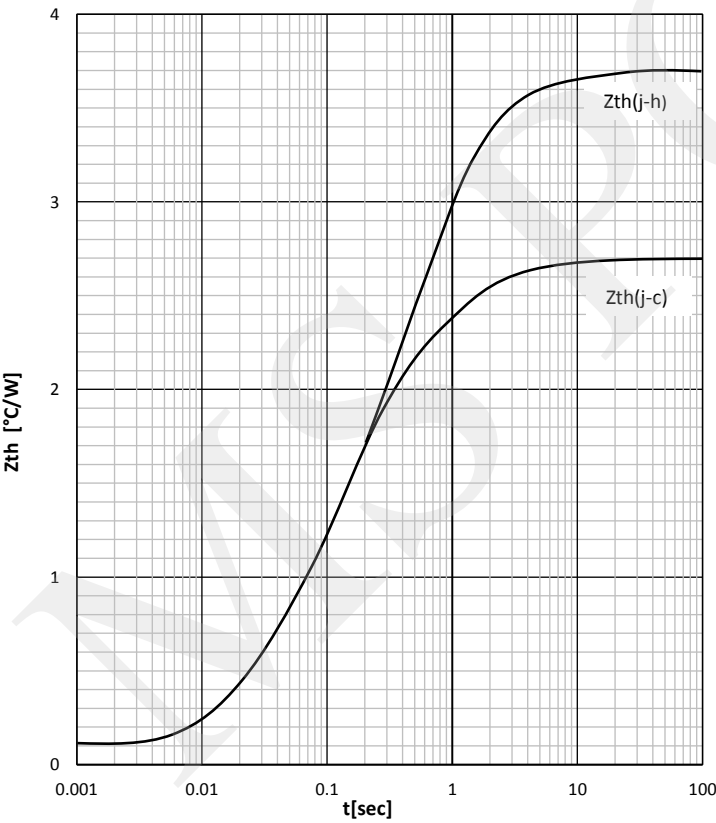
FORWARD CHARACTERISTIC



SURGE CHARACTERISTICS



TRANSIENT THERMAL IMPEDANCE



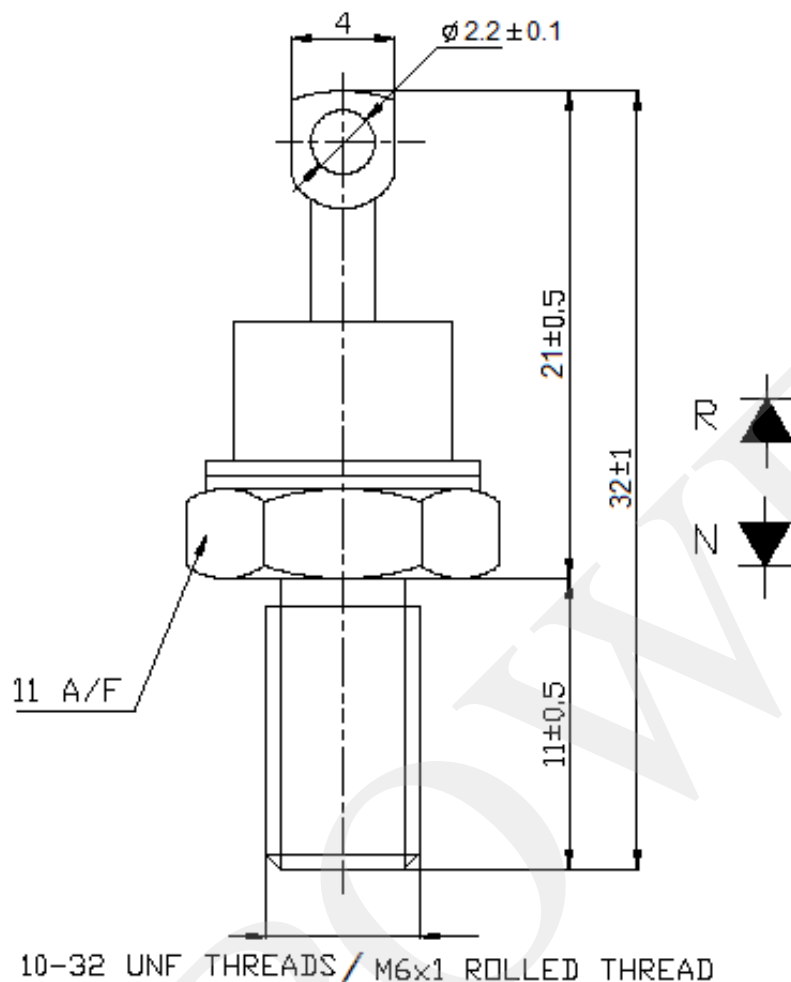
Prepared by : ABA

Date of Publication : 20.12.2016

Approved by : RBS

Revision : 0

Outline



MS Power GmbH

Mergenthalerallee 79-81
65760 Eschborn, Germany
Web: www.mspowergroup.com
Mail: info@mspowergroup.de

Sales & Enquiry:

sales@mspowergroup.de

Technical Support:

solution@mspowergroup.de

After sales Service:

service@mspowergroup.de

Phone: +49 (0) 6196/7768 666

Fax: +49 (0) 6196/7757 888



Prepared by : ABA

Date of Publication : 20.12.2016

Approved by : RBS

Revision : 0

Terms & Conditions of usage :

The data contained in this product datasheet is exclusively intended for technically trained staff. You and your technical departments will have to evaluate the suitability of the product for the intended application and the completeness of the product data with respect to such application. This product datasheet is describing the characteristics of this product for which a warranty is granted. Any such warranty is granted exclusively pursuant to the terms and conditions of the supply agreement. There will be no guarantee of any kind for the product and its characteristics. The information in the valid application and assembly notes of the device must be considered.

Should you require product information in excess of the data given in this product datasheet or which concerns the specific application of our product, please contact the sales office, which is responsible for you (see www.mspowergroup.com). For those that are specifically interested we may provide application notes.

Due to technical requirements our product may contain dangerous substances. For information on the types in question please contact the sales office, which is responsible for you.

Should you intend to use the Product in aviation applications, in health or life endangering or life support applications, please notify. Please note, that for any such applications we urgently recommend

- to perform joint Risk and Quality Assessments;
- the conclusion of Quality Agreements;
- to establish joint measures of an ongoing product survey, and that we may make delivery dependent on the realization of any such measures.

If and to the extent necessary, please forward equivalent notices to your customers.

Changes of this product datasheet are reserved.

Prepared by : ABA	Date of Publication : 20.12.2016
Approved by : RBS	Revision : 0