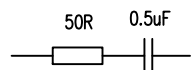


REVISION HISTORY

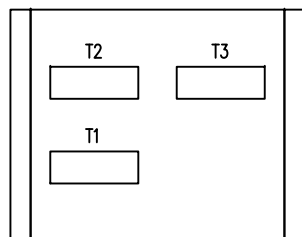
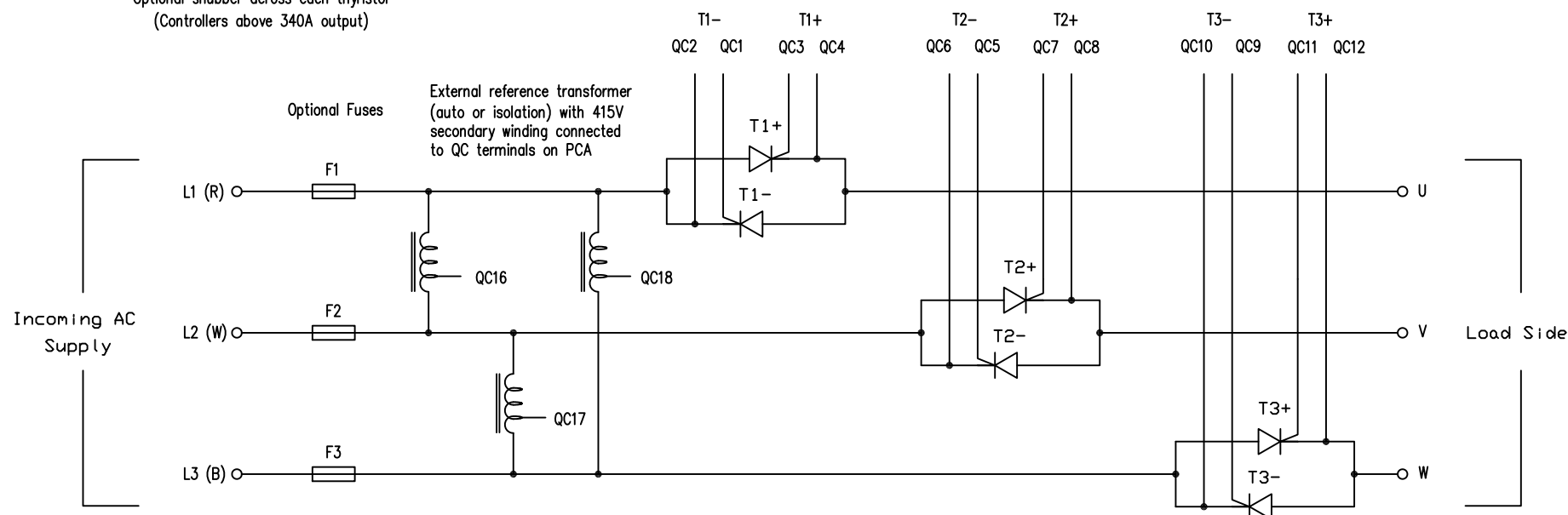
ISSUE	ECN	DETAILS	DRWN	CHKD	DATE
01	-	Released	IOB	-	17.12.14



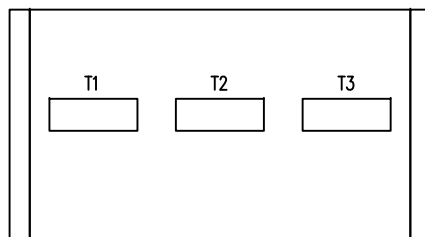
Optional snubber across each thyristor
(Controllers above 340A output)

Note: Cathode connections are connected to the Aux terminals of device

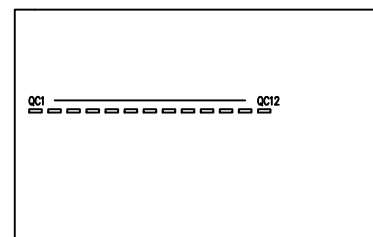
Cathode leads – Red Gate leads – White



Top View – Controller (Less than 100A)



Top View – Controller (greater than 100A)





Top View – Firing Card (Showing terminal locations)

Note:

When using an external transformer, cut tracks at QC16, 17, 18.

Fit QC terminals for QC17, 18 and solder L1 (R) directly to T1 as it interferes with the chassis

Remove all burrs and sharp edges.
Tolerances except where otherwise stated:
Up to 10 ±0.1
Over 10 up to 250 ±0.2
Over 250 up to 500 ±0.3
Over 500 ±0.5
All angles ±2°

PROPRIETARY INFORMATION		Not to be disclosed, copied or used without prior written permission from Fastron Technologies	
	25 Kingsley Close, Rowville, Vic, Australia, 3178 Phone: +61 3 9763 5155 Fax: +61 3 9751 5166		© 2014
	TITLE: F330 thyristor wiring with External Transformer Phase / Burst Control		
	PART/DOC NUMBER DWG-1010	SHEET A4	ISSUE 01
All dimensions in millimetres	FILENAME: DWG-1010-A4-ISS-01		