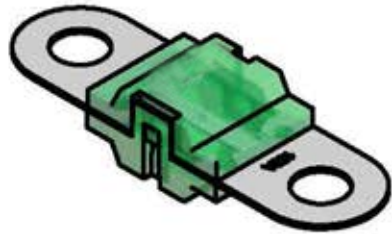
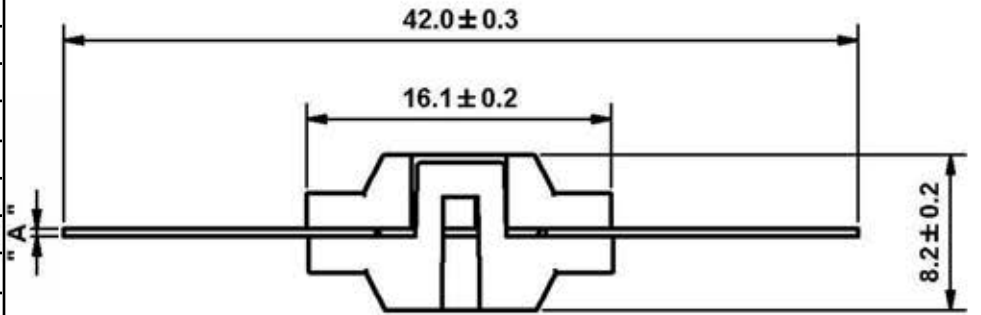
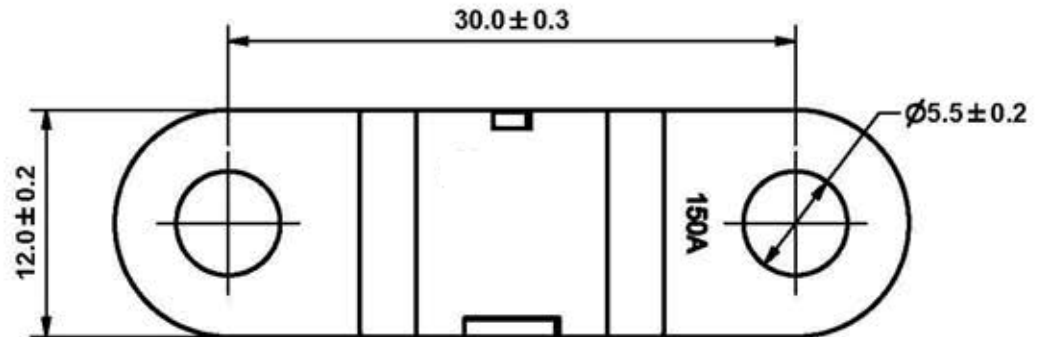


Rated Current	Rated Voltage	Color	Terminal Thickness DIM "A"	Test Cable	I ² t
30A	32V/60V	Orange	0.4 mm	2.5 mm ²	4985
40A	32V/60V	Green	0.4 mm	4 mm ²	6745
50A	32V/60V	Red	0.4 mm	6 mm ²	6832
60A	32V/60V	Yellow	0.4 mm	6 mm ²	14756
70A	32V/60V	Brown	0.4 mm	10 mm ²	21824
80A	32V/60V	Clear	0.4 mm	10 mm ²	24679
100A	32V/60V	Blue	0.4 mm	16 mm ²	41680
125A	32V/60V	Pink	0.4 mm	25 mm ²	62015
150A	32V/60V	Gray	0.4 mm	25 mm ²	82743
200A	32V/60V	Violet	0.5 mm	40 mm ²	115420





UL
E356490

Interrupting Ratings: 1000Amp at 60V DC
 Ambient temperature: -40~125 °C
 Fuse Mounting: M5 Threaded Stud And Hex Nuts
 Body: Thermoplastic
 Finishing: Tin plating
 Complies with: UL248 standard

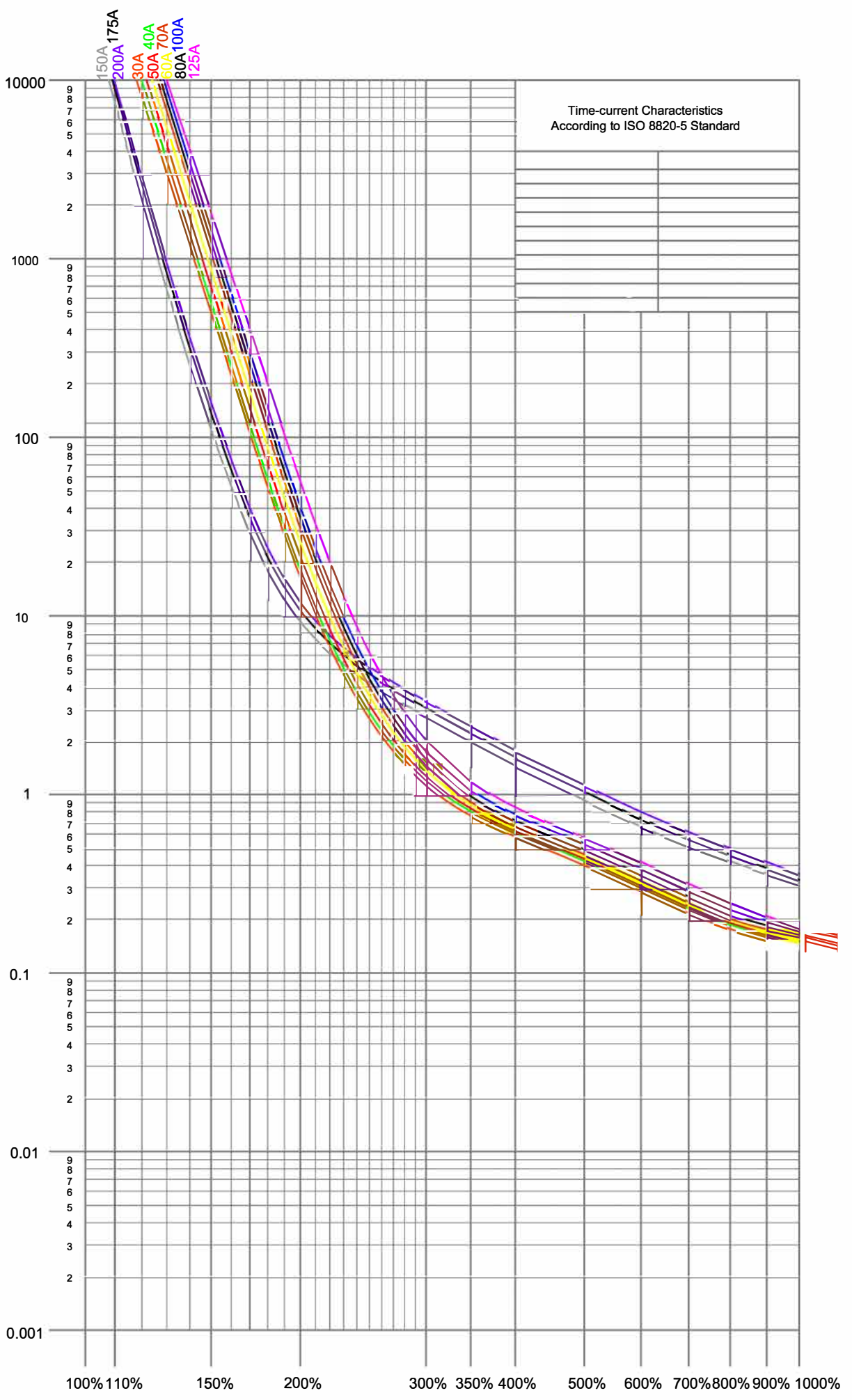


Time-Current Characteristics

% of Ampere Rating	Opening Time
100%	Min 100hrs.
110%	Min 4hrs.
150%	60~3600 sec
200%	1~100 sec
300%	0.3~15 sec

UNLESS OTHERWISE SPECIFIED DIMENSIONS ARE IN MM TOLERANCE DECIMALS ANGULAR X ± 0.5 ± 2' XX ± 0.25 DO NOT SCALE DRAWING		CUSTOMER NO.	Vicfuse VICTORS INDUSTRIAL CO.,LTD.	
		DRAWN BY Jason	TITLE Bolt-on Fuse	
 		CHECKED BY		
		APPROVED BY	DRAWING NO. BA10112201	
P/N		DATE 2010/11/22		
REV	A	SCALE		

Fusing Time in second



Multiple of rated current