

● AC 3-Phase 3-Line Series Filters

EFC203-T Series

- 3 Phase 10A-1600A
- Easy connection Terminal Block, compact and light
- Available for strong interference environments, inverter equipments, etc.
- Safety approval: 



ROHS

Technical data

Rated Voltage	400/250 VAC		Rated Current@40°C	5A-200A
Test Voltage	line-line	1500VDC	Climatic Category	25/085/21
	line-ground	2700VDC	Operating Frequency	50/60Hz

Filter Selection Table

Part No.	Rated current @40°C	Diagrams	Dimensions (mm)							
			A	B	C	D	E	F	H	J
EFC203-5-T	5A	Fig.1	168	180	190	190	20	39	74	M4
EFC203-10-T	10A	Fig.1	168	180	190	190	20	39	74	M4
EFC203-20-T	20A	Fig.1	220	235	242	250	25	44	74	M5
EFC203-30-T	30A	Fig.1	240	235	270	271	30	49	84	M5
EFC203-50-T	50A	Fig.1	220	235	250	275	60	84	89	M6
EFC203-65-T	65A	Fig.1	220	235	250	275	60	84	89	M6
EFC203-80-T	80A	Fig.1	240	255	270	308	60	84	139	M6
EFC203-100-T	100A	Fig.1	240	255	270	326	65	94	149	M10
EFC203-130-T	130A	Fig.1	240	255	270	326	65	94	149	M10
EFC203-150-T	150A	Fig.1	240	255	270	326	65	94	149	M10
EFC203-200-T	200A	Fig.1	350	365	380	450	102	120	170	M10

Diagrams

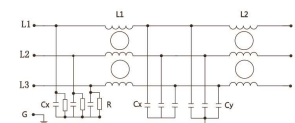
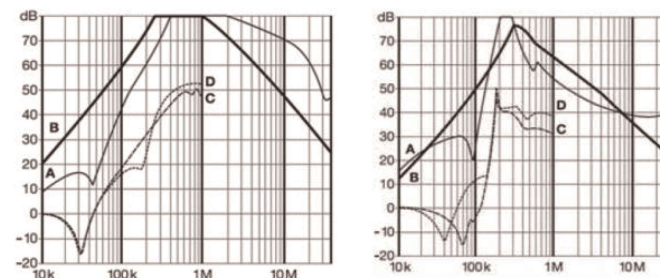


Fig.1

Insertion loss(dB)

— common mode — differential mode



10A-50A

65A-200A.

Dimensions(mm)

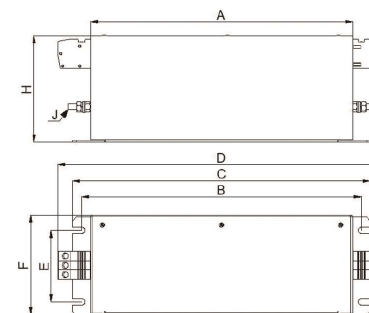


Fig.1