

Touchless Switch



See below:

Approvals and Compliances

Description

- Touchless momentary push button (NO¹) or as latching switch (LA)
- Protection against unintended switching
- Precise operating
- Potential free output contacts
- Laser lettering possible
- Vandal resistant
- 4 wires, 26AWG, 0.128 mm²

Unique Selling Proposition

- Variable supply voltage
- Wiping and cleaning the surface does not trigger a switching operation
- Galvanic separated outputs

Characteristics

- Housing made from stainless steel
- With ring illumination
- Wearless, no moving parts
- Attractive design
- Insensitive to water and rain

Other versions on request

- MOQ: 1000 pcs.

Weblinks

[pdf data sheet](#), [html datasheet](#), [General Product Information](#), [CAD-Drawings](#), [Product News](#), [Detailed request for product](#)

Technical Data

Electrical Data

| | |
|-------------------------------------|---|
| Switching Function | momentary (NO ¹) or latching (LA) |
| Switching Voltage | max. 42 VAC / 60 VDC |
| Switching Current | max. 100 mA |
| Electrical Rating | 1 W |
| Switch Resistance OFF | > 10 MΩ |
| Switch Resistance ON | < 16 Ω |
| Supply Voltage LED | VDC |
| Current Consumption LED red / green | 8.0 mA (typ) / 15.0 mA (max) Peak: 34 mA (switch is open) 10.0 mA (typ) / 17.0 mA (max) Peak: 34 mA (switch is closed) |
| Reverse Polarity Protection | yes |
| Output Type | OptoMOS Relay |
| Lifetime | >20 million actuations |
| connection type ² | 4 wires, 26AWG, 0.128 mm ² |

Mechanical Data

| | |
|-------------------------------|---------|
| Actuation Type | optical |
| Actuating Force | none |
| Shock Protection | IK09 |
| Mounting Depth | 16.5 mm |
| Tightening Torque Plastic Nut | 2.5 Nm |

Climatical Data

| | |
|--------------------------------|------------------------|
| Operating Temperature | -30 to 85 °C |
| Storage Temperature | -40 to 85 °C |
| IP Protection Class Front Side | IP67 acc. to IEC 60529 |

Material

| | |
|--------------------------------------|-----------------|
| Housing | Stainless Steel |
| Illuminated Ring (Ring Illumination) | PMMA |
| Sensor Window | PC |
| Seal Ring | NBR70 |

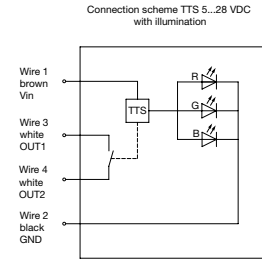
Approvals and Compliances

Detailed information on product approvals, code requirements, usage instructions and detailed test conditions can be looked up in [Details about Approvals](#)

SCHURTER products are designed for use in industrial environments. They have approvals from independent testing bodies according to national and international standards. Products with specific characteristics and requirements such as required in the automotive sector according to IATF 16949, medical technology according to ISO 13485 or in the aerospace industry can be offered exclusively with customer-specific, individual agreements by SCHURTER.

Connection diagram

| Connection wire assignment | | |
|----------------------------|------------|----------------------|
| Wire-number | Wire color | function |
| Wire 1 | brown | Vin = 5 VDC...28 VDC |
| Wire 2 | black | GND |
| Wire 3 | white | OUT1 |
| Wire 4 | white | OUT2 |



Lettering Colour of Laser Lettering

| Material | Lettering Colour | |
|-----------------|------------------|----------------|
| Stainless Steel | black | Filled letters |

Order Index Lettering

| Laser Marking | | | |
|---------------|--------|-------------|-------------|
| 001 =A | 021 =U | 041 =÷ | 061 =EIN |
| 002 =B | 022 =V | 042 =* | 062 =AUS |
| 003 =C | 023 =W | 043 == | 063 =AUF |
| 004 =D | 024 =X | 044 =# | 064 =AB |
| 005 =E | 025 =Y | 045 =↔ | 065 =ON |
| 006 =F | 026 =Z | 046 =‡ | 066 =OFF |
| 007 =G | 027 =0 | 047 =→ | 067 =UP |
| 008 =H | 028 =1 | 048 =← | 068 =DOWN |
| 009 =I | 029 =2 | 049 =↓ | 069 =HIGH |
| 010 =J | 030 =3 | 050 =↑ | 070 =LOW |
| 011 =K | 031 =4 | 051 =% | 071 =ON/OFF |
| 012 =L | 032 =5 | 052 =√ | 072 =START |
| 013 =M | 033 =6 | 053 =CTRL | 073 =RESET |
| 014 =N | 034 =7 | 054 =RETURN | 074 =⏻ |
| 015 =O | 035 =8 | 055 =SHIFT | 075 =💡 |
| 016 =P | 036 =9 | 056 =LOCK | 076 =🔔 |
| 017 =Q | 037 =+ | 057 =STOP | 077 =Ⓜ |
| 018 =R | 038 =- | 058 =ENTER | |
| 019 =S | 039 =. | 059 =BACK | |
| 020 =T | 040 =x | 060 =LINE | |

Please note that the font size depends on the number of characters

| | | | | | | | | | | | | | | | | | | | | | | | | | | |
|---|---|---|---|----|---|----|-----|---|----|---|----|----|---|----|----|---|----|-----|-----|---|----|----|-----|---|----|----|
| T | T | S | - | 22 | - | NO | A10 | - | 06 | - | S0 | NC | B | S0 | NC | - | RI | 0RG | VAR | - | W | 0 | 000 | - | A | C |
| | | | | 1 | | 2 | 3 | | 4 | | 5 | 6 | 7 | 8 | 9 | | 10 | 11 | 12 | | 13 | 14 | 15 | | 16 | 17 |

Diameter 1
 22 mm = 22

Switch Function 2
 Normally open = NO
 Latching = LA

Rated current 3
 100mA = A10

Detection distance 4
 6 cm = 06

Housing material 5
 Stainless steel = S0

Housing color 6
 Natural = NC

Mounting 7
 Thread (M) W/ anti-rotation protection = B

Actuator material 8
 Stainless steel = S0

Actuator color 9
 Natural = NC

Illumination type 10
 Ring illumination = RI

Illumination color 11
 Red-green = 0RG

Supply voltage illumination 12
 5-28V = VAR

Terminal-main function 13
 Flexible Wire = W

Lettering type 14
 No lettering = 0

Marking type 15
 None = 000

Housing shape 16
 Round = A

Accessories 17
 Hex nut plastic w / O-Ring = C

All Variants

| Diameter [mm] | Illumination | Illumination Color inactive / active | Function | Accessories | Order Number |
|---------------|-------------------|--------------------------------------|------------------------------|-----------------|--------------|
| 22 | Ring Illumination | bi-colored green / red | latching (LA) | Hex nut plastic | 3-131-913 |
| 22 | Ring Illumination | bi-colored green / red | momentary (NO ¹) | Hex nut plastic | 3-131-894 |

Latching and momentary NO switch are open after power-up (protection against unintended switching)

Availability for all products can be searched real-time: <https://www.schurter.com/en/Stock-Check/Stock-Check-SCHURTER>

Minimum order quantity for standard variants with or without laser marking is 10 pieces.

Packaging unit 10 Pcs