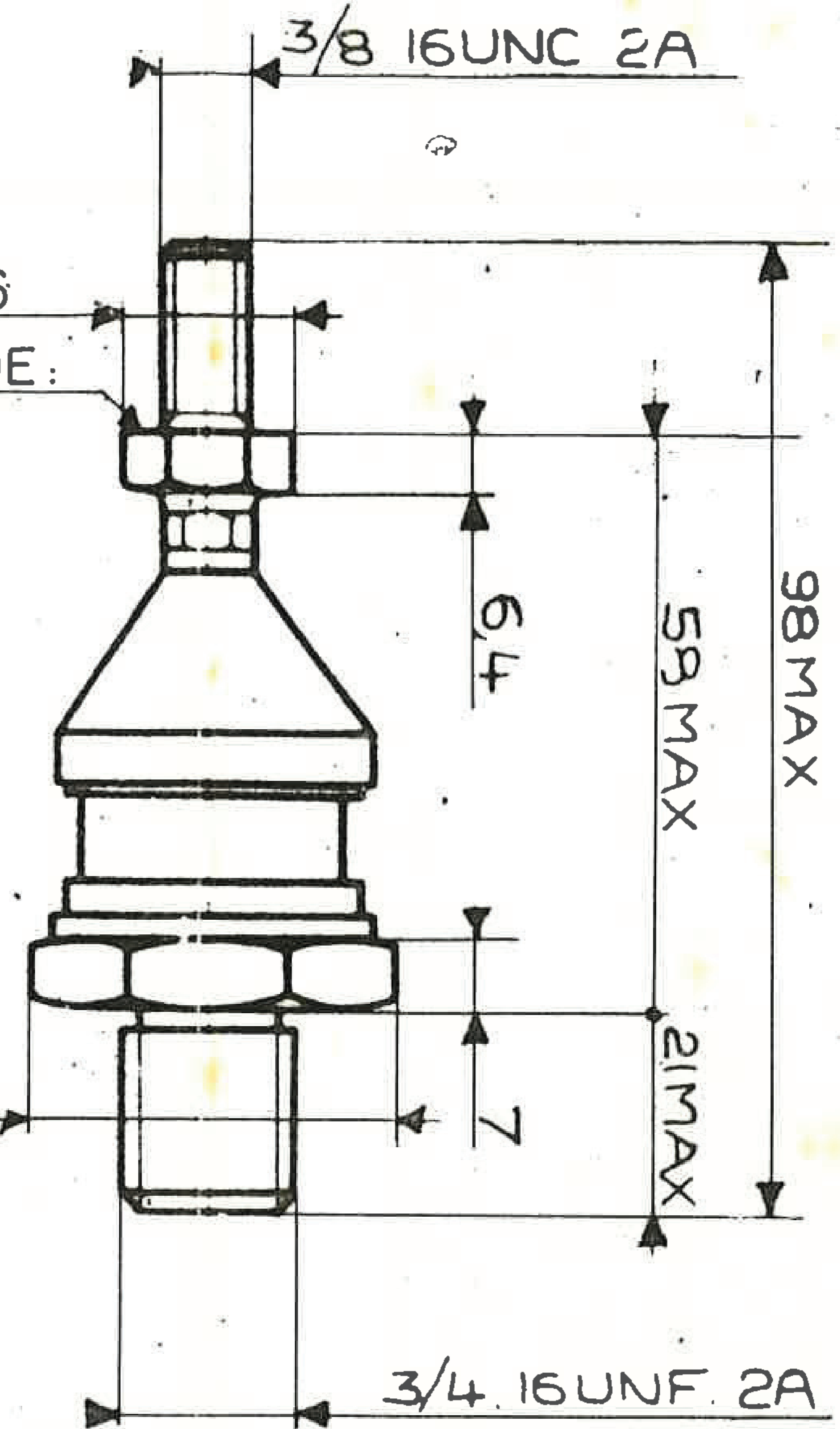


N° 38-140326

17.8 ON WRENCH SPANS: 16  
 MAX. WEIGHT ON THIS SIDE:  
 50g FOR A 6000g  
 ACCELERATION.

36.9 ON WRENCH SPANS  
 32



DIMENSIONS ACCORDING TO SPECIFICATION "IR'E 2025  
 DIODES 305 U 80-305 U 250-305 UR 80-305 UR 250 TYPES

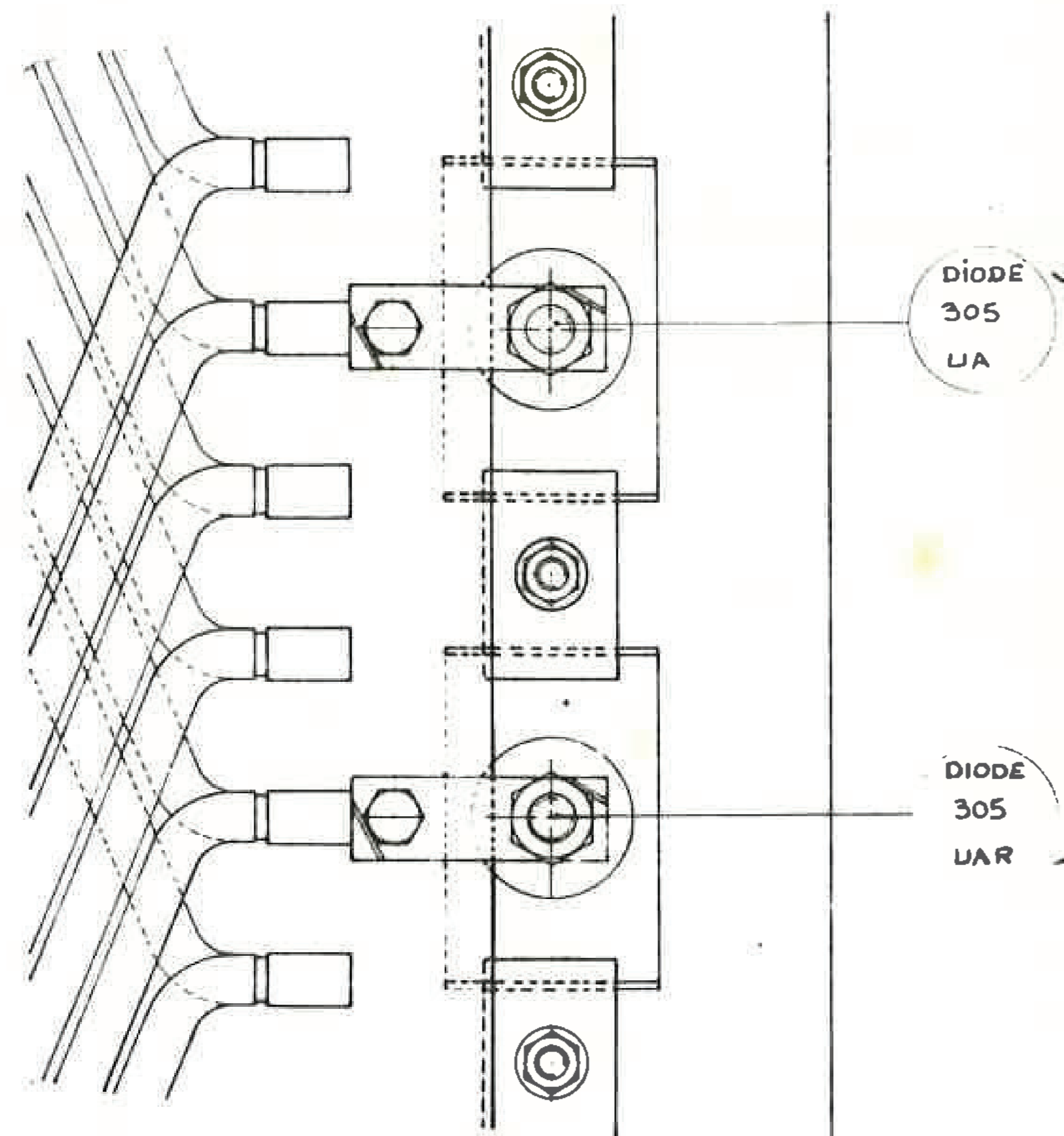
960-2800 V<sub>RSM</sub> - 300 A

WEIGHT : 175 g

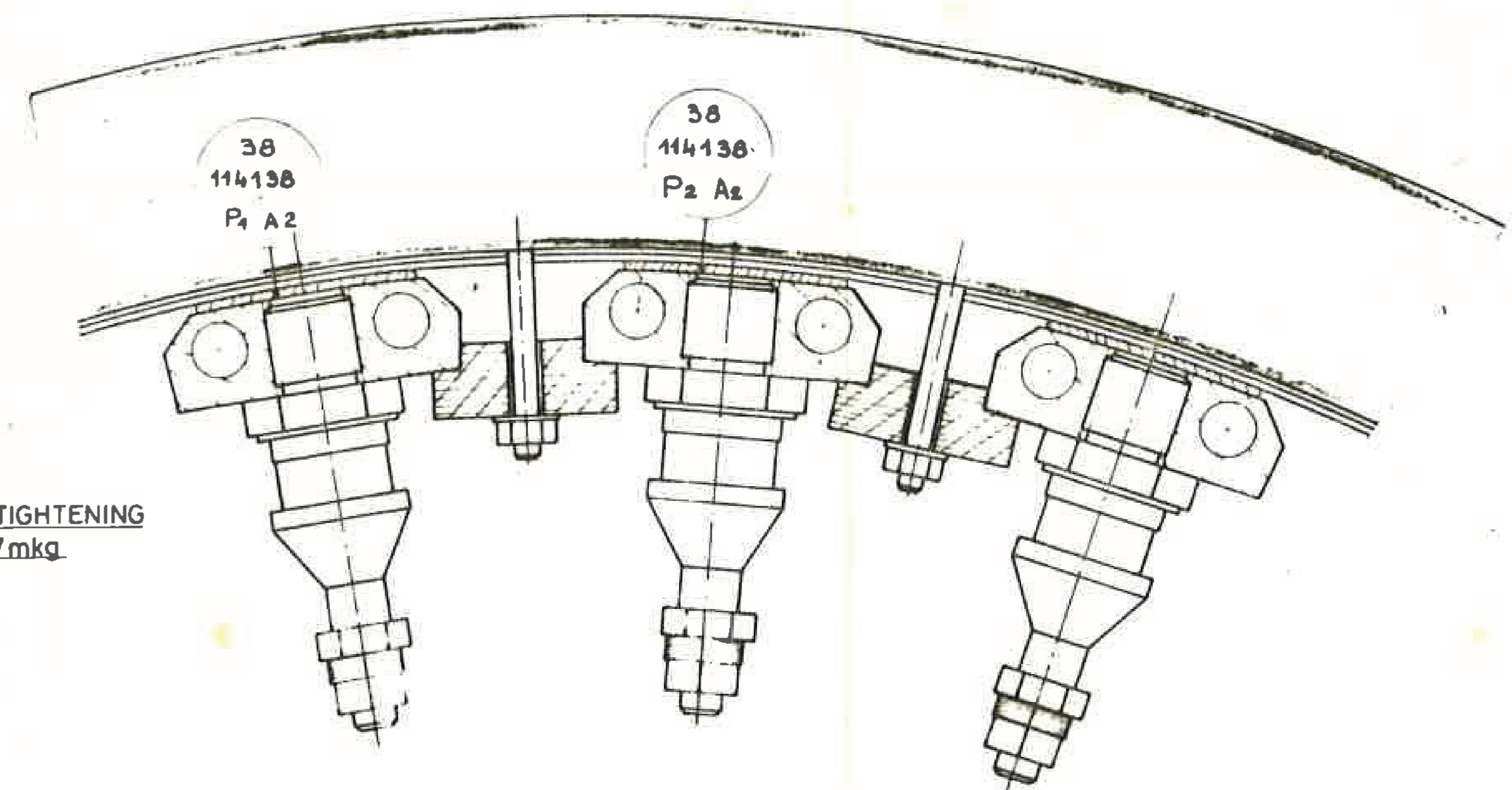
CLAMPING COUPLE : NON LUBRIFIED THREADS 32 AT 37mN

| REP<br>N°     | DESIGNATION | LIBELLE ABRÉGÉ | N° DE CODE   | NETTE | BRUTE             | OBSERVATIONS        |
|---------------|-------------|----------------|--------------|-------|-------------------|---------------------|
| 1             |             | MATIERE        |              | MASSA |                   | DESSIN ou MODÈLE N° |
| 1             | DIODE       |                |              |       |                   |                     |
| MODIFICATIONS | PLAN D'ORIG |                |              |       |                   |                     |
|               | DESSIN ORIG |                |              |       |                   |                     |
|               | REPLACE     |                |              |       |                   |                     |
|               | N° CLASS    |                |              |       |                   |                     |
|               | AR          | CAT            | COMPLICATION | MAT   | ALSTHOM - BELFORT |                     |
|               |             |                |              |       | N° 38-140326      |                     |

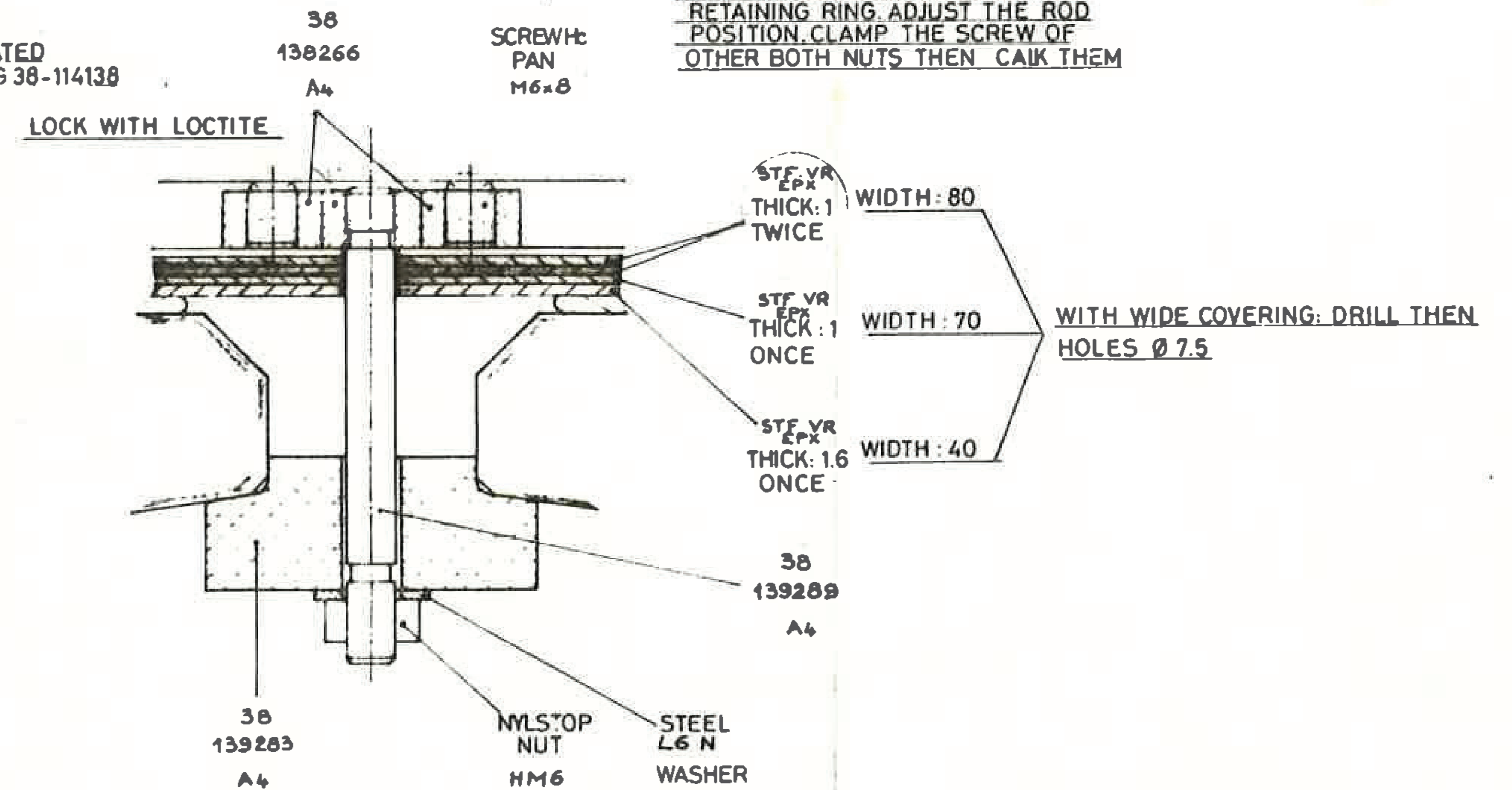
SECTION AA



NON LUBRIFIED TIGHTENING  
COUPLE 32 TO 37mkg



DETAIL X

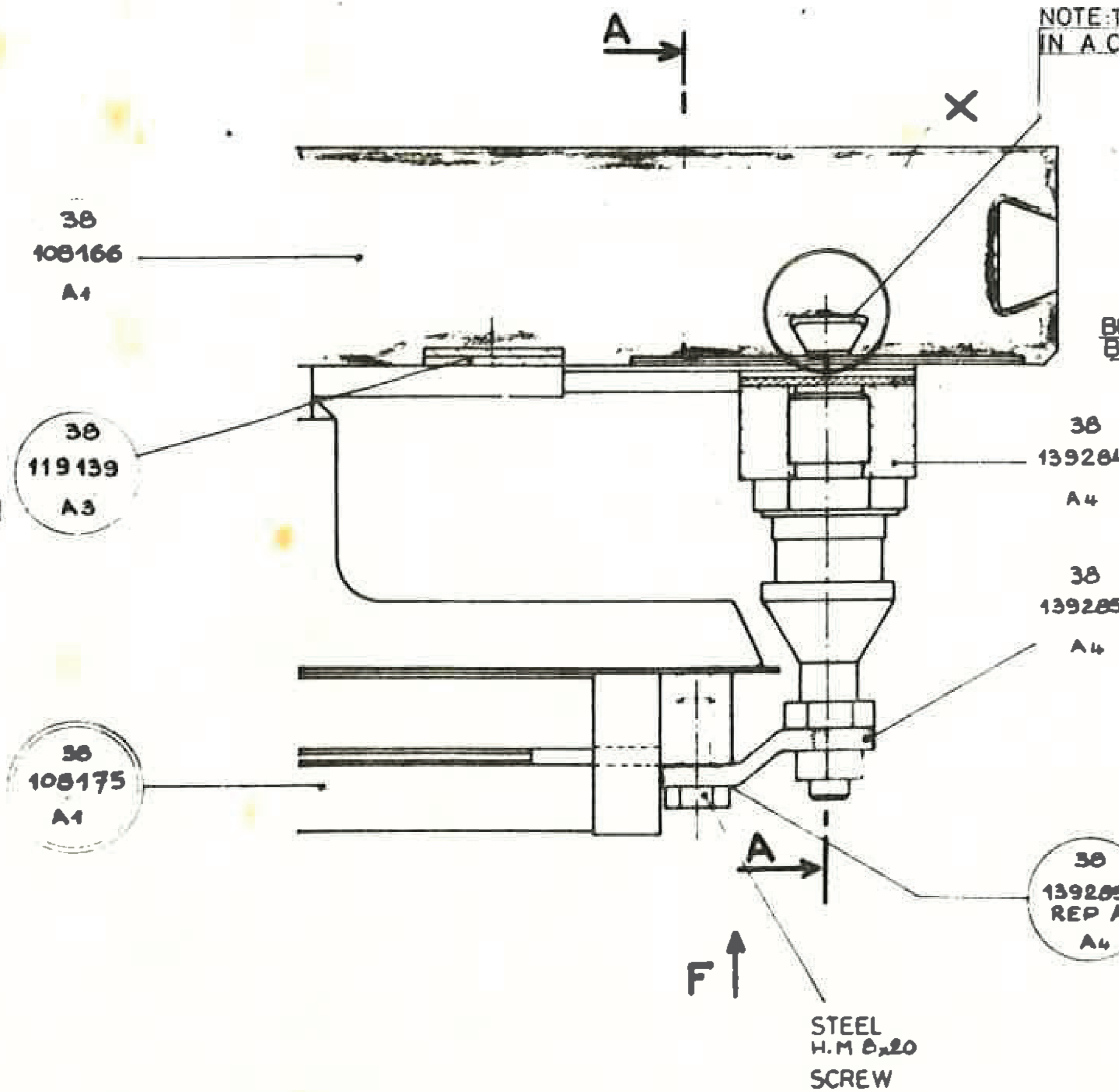


NOTE: THE SLOT MUST BE LOCATED  
IN A CONNECTION CENTERLING 38-114138

BEND THE CONNECTION  
BARE END

FOLD THE COPPER AT  
ITS ENDS TO LOCK  
SCREW AND NUT

THIS SLEEVE WILL BE LOCATED IN  
THE RETAINING RING AS A  
CIRCLIPS. IT WILL BE TIN-WELDED  
AT CONNECTION THEN MADE FLUSH  
WITH THE RETAINING RING.



| REP. No.      | DESIGNATION          | CHIFFRE ABBRÉ | N. DE COTE | DESSIN OU<br>FAUREAU N. | NUM. BR. DE<br>MANSE L <sub>1</sub> | OBSERVATIONS<br>ET MODÈLE N° |
|---------------|----------------------|---------------|------------|-------------------------|-------------------------------------|------------------------------|
| 1-2           | RECTIFIER BRIDGE SET |               |            |                         |                                     |                              |
| DESS. 23-6-72 | VERIF.               |               |            |                         |                                     |                              |
| RO55E J.      |                      |               |            |                         |                                     |                              |

CC 38 108098

ALSTHOM - BELFORT

N°38-108169

N°38-108169

AJOUTER NOTA B CHANGER FIXATION  
DE L'ANNEAU  
DE L'ANNEAU  
30-119139  
24.74  
JLR