

Installation & User Manual

marc Configuration

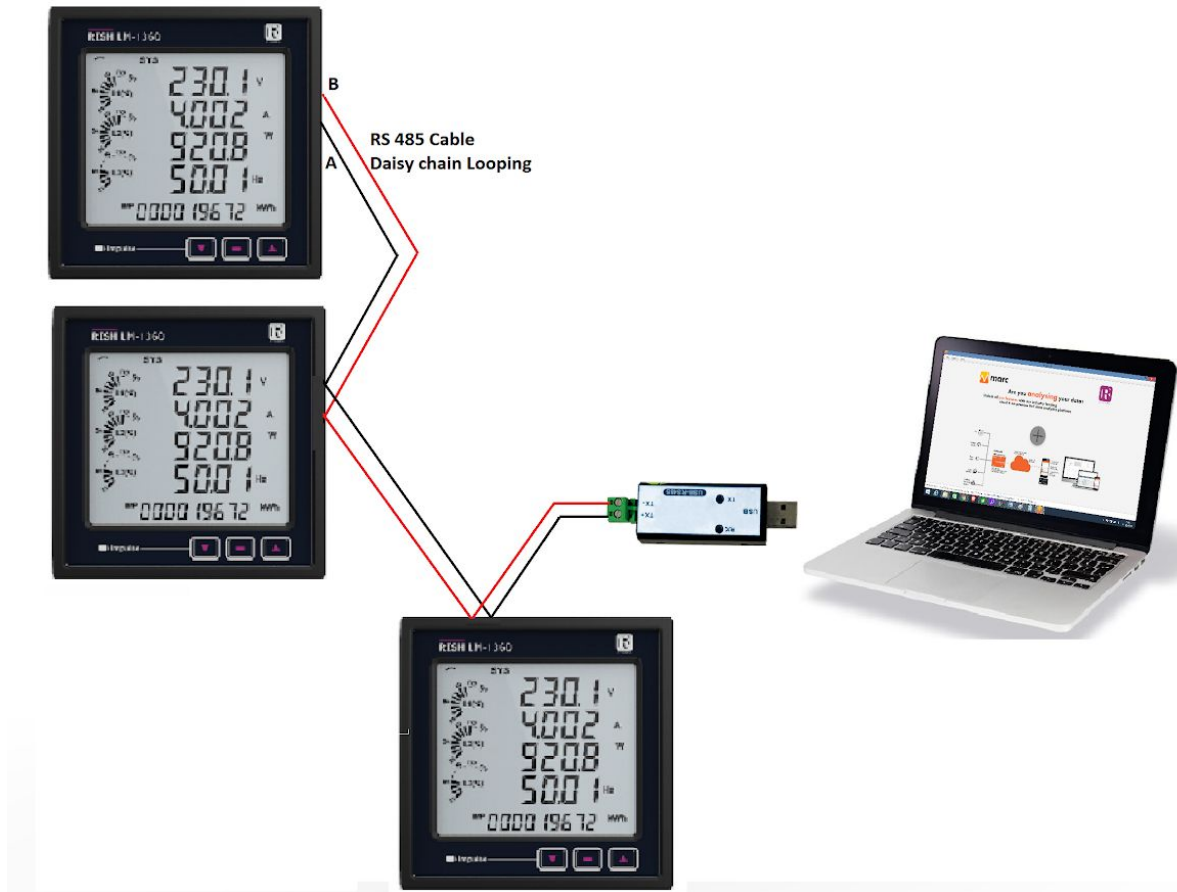
Utility



marc Configuration Utility

Marc Configuration Utility is for Rishabh products for reading and programming devices. marc Configuration Utility works on two communication types, Serial and TCP/IP for a single device at a time. Both communication types have 2 operating modes each, read or write. In read operation you get only readable parameters(Measured Parameter) and in write operation users can programme the meter without using meter keys. This software is very effective and simple to use.

Network Architecture

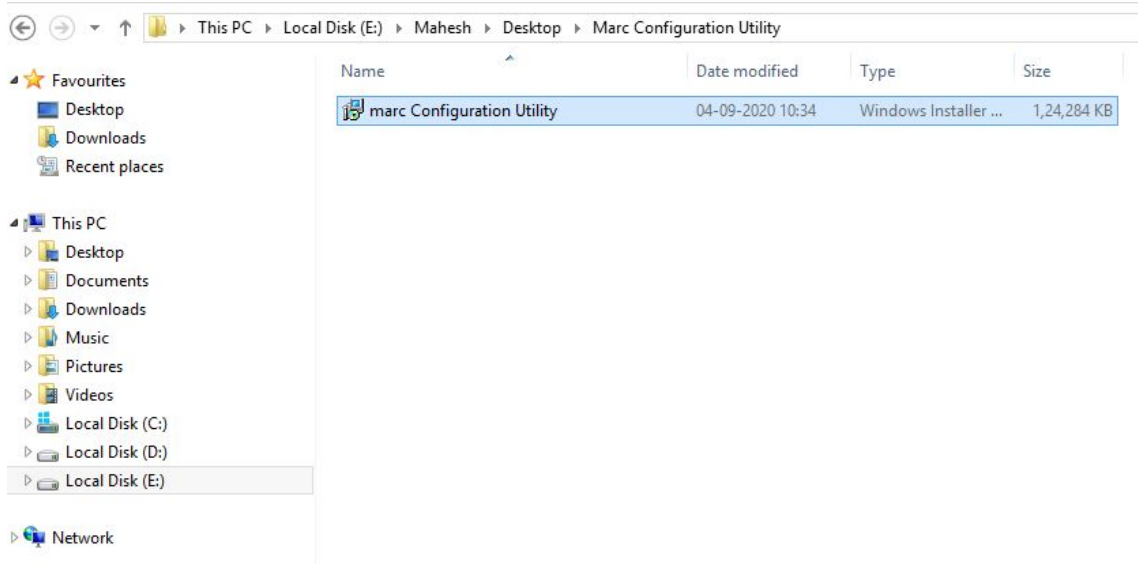


Index

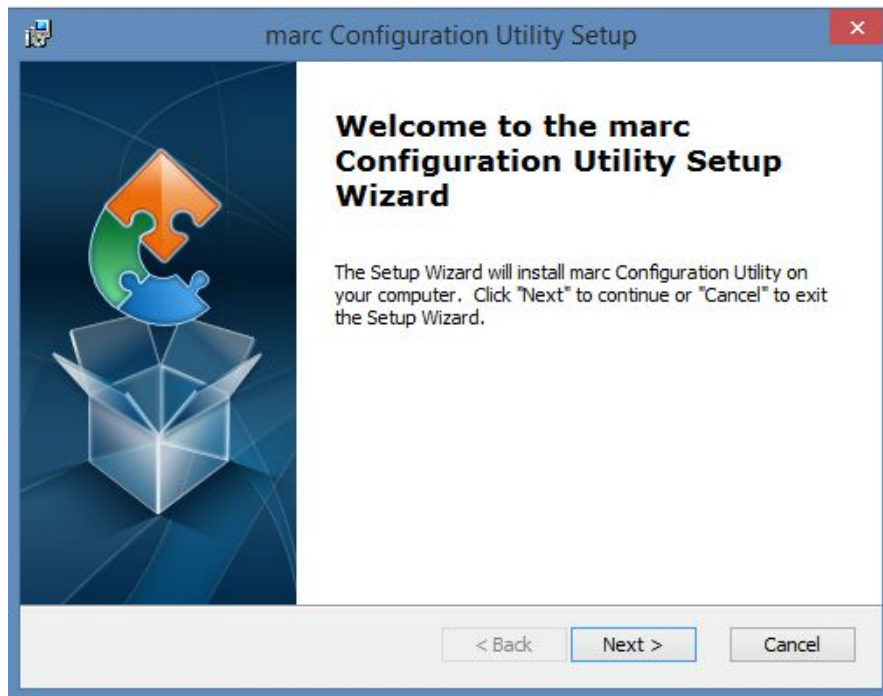
Title	Page Number
1. Installation of MARC Configuration Utility software	5
2. Update	8
2.1 Update Device List	8
2.2 Update Software	10
3. Operating Instructions	14
3.1 Read Operation	15
3.2 Write Operation	20

1. Installation Of MARC Configuration Utility Software

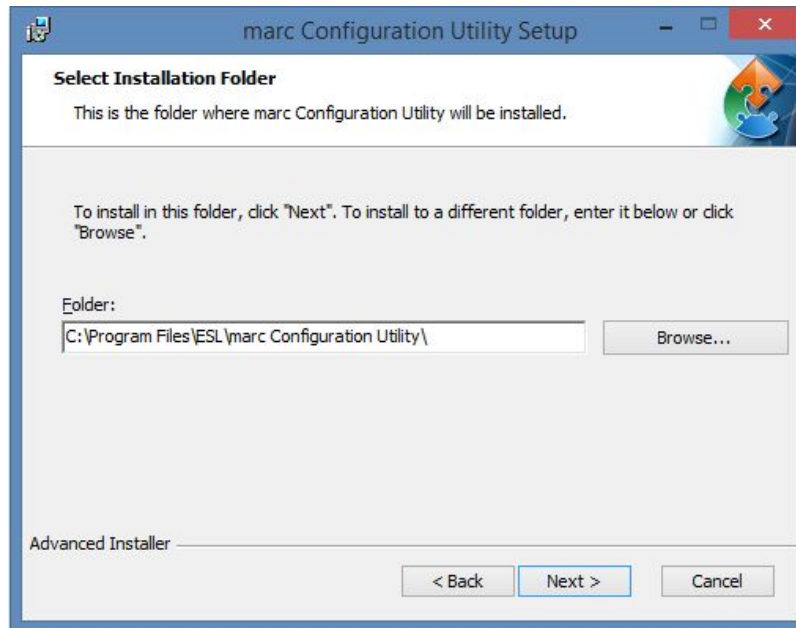
- Right click on Marc Configuration Utility and click on “install” Button.



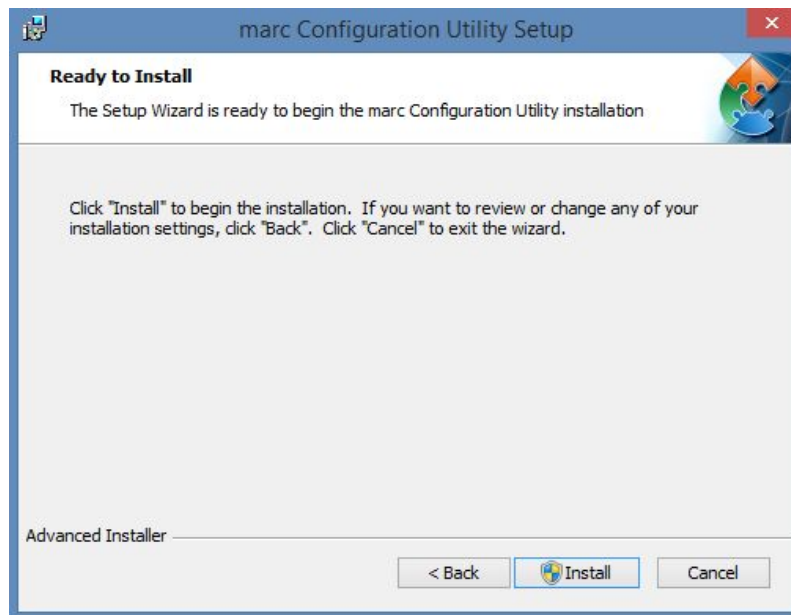
- Click on “Next>” Button .

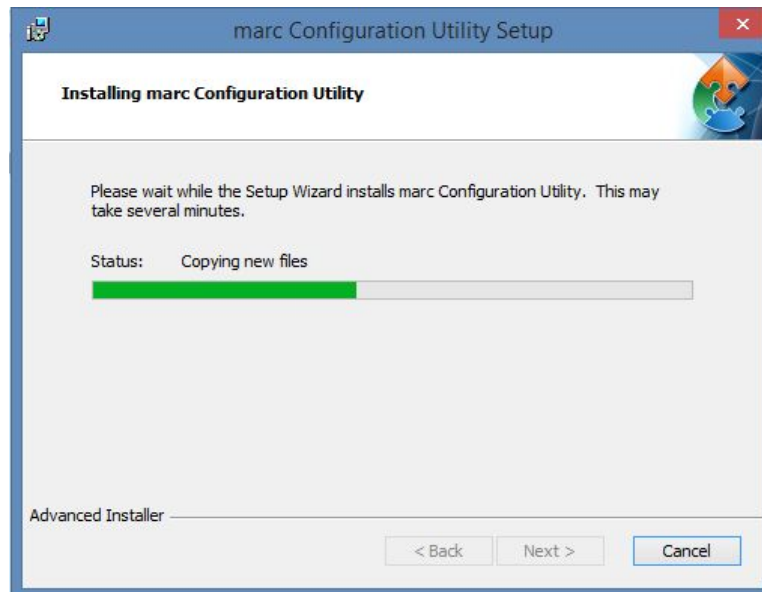


- Click on “Next>” Button

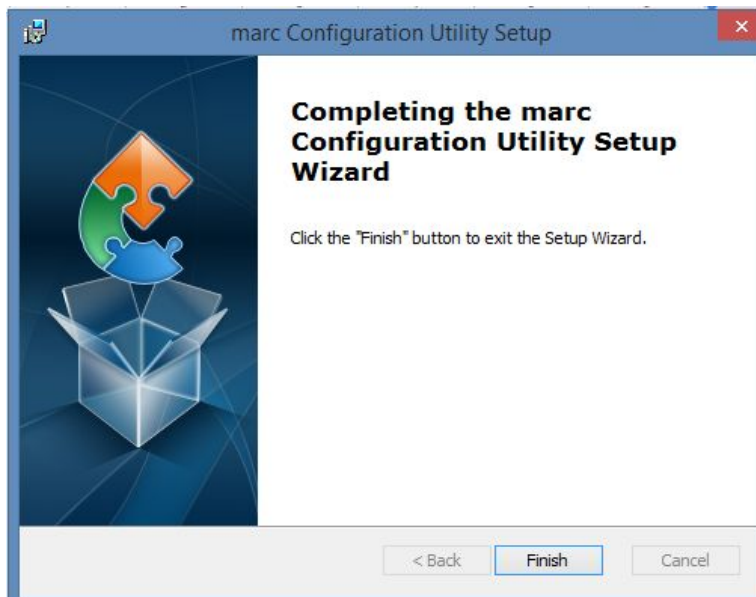


- Click on “Install” Button.





- Click on "Finish" Button



Note- After Installation & first use of marc Configuration utility , user has to update the marc Configuration utility software along with the list of devices as per following procedure. Users must have good internet connectivity.

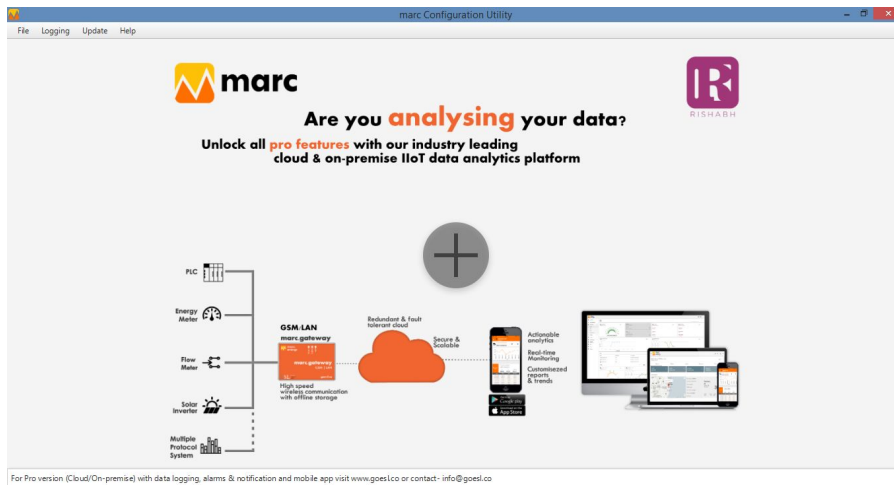
2. Update

2.1 Update Device List

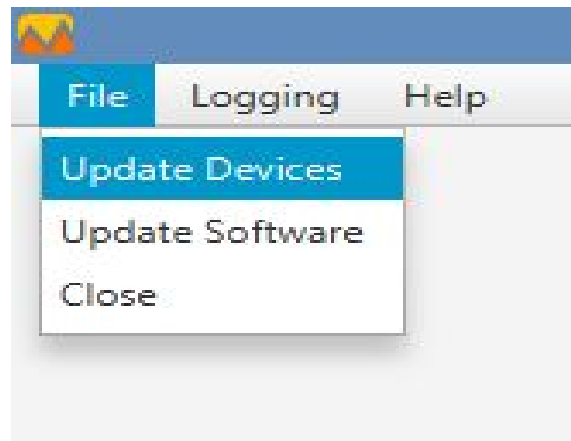
- “marc Configuration utility” icon gets created on the desktop. User has to open application as a “Run as administrator” by right clicking on “marc Configuration utility”



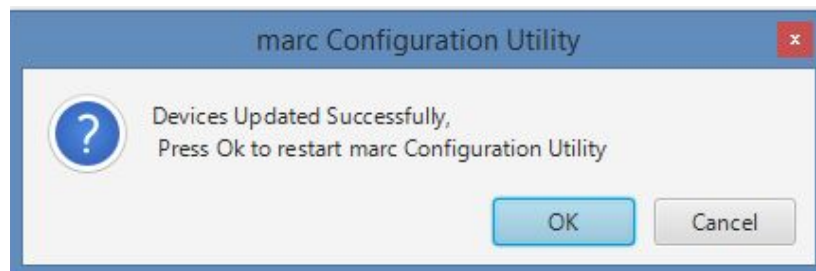
- Below the dashboard screen will appear.



- User gets updated device by going to “File” menu and click on “Update Devices”

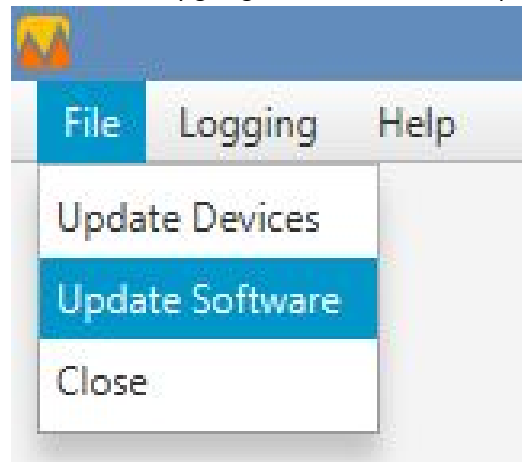


- Click on “ok” Button. All new devices will be updated.

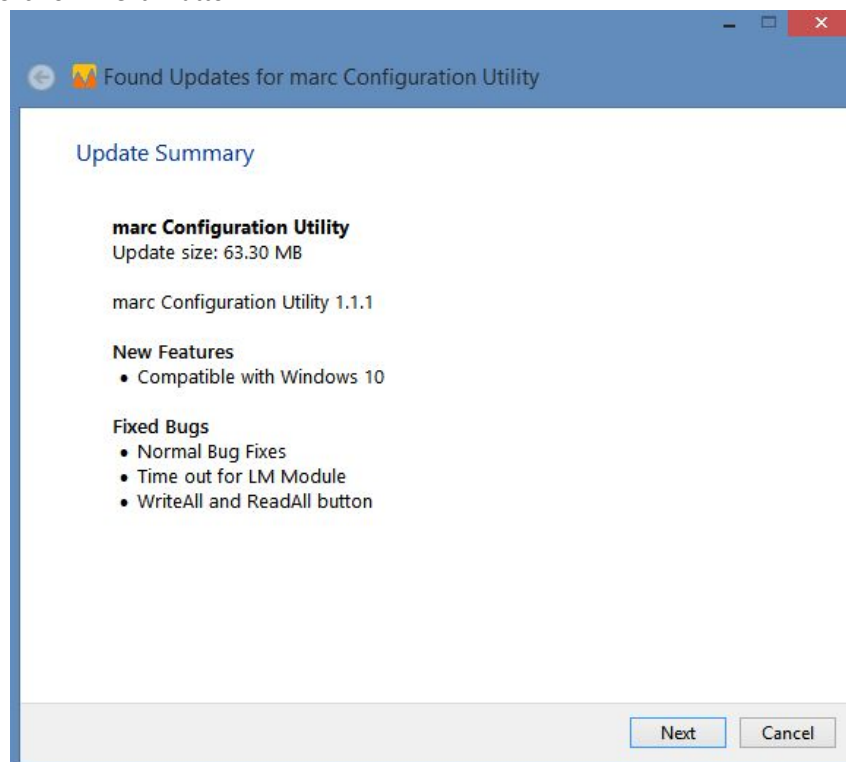


2.2 Update Software

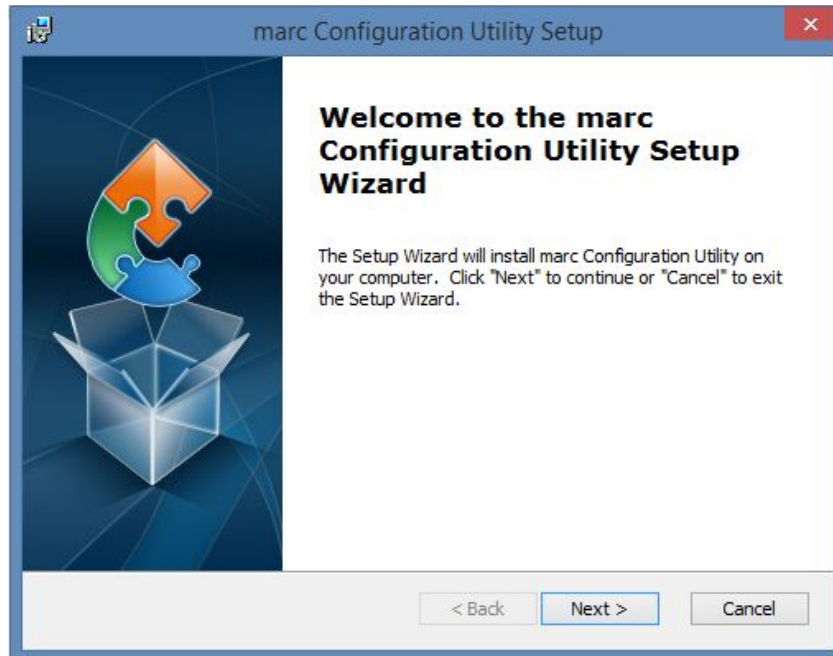
- User can update the software by going to “File” menu and “Update Software”.



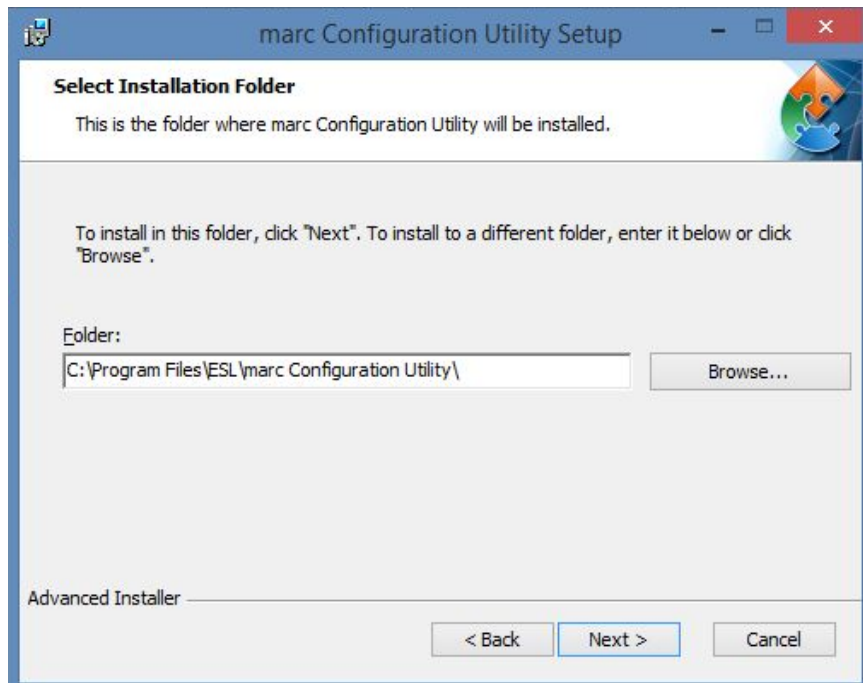
- Click on “Next” Button



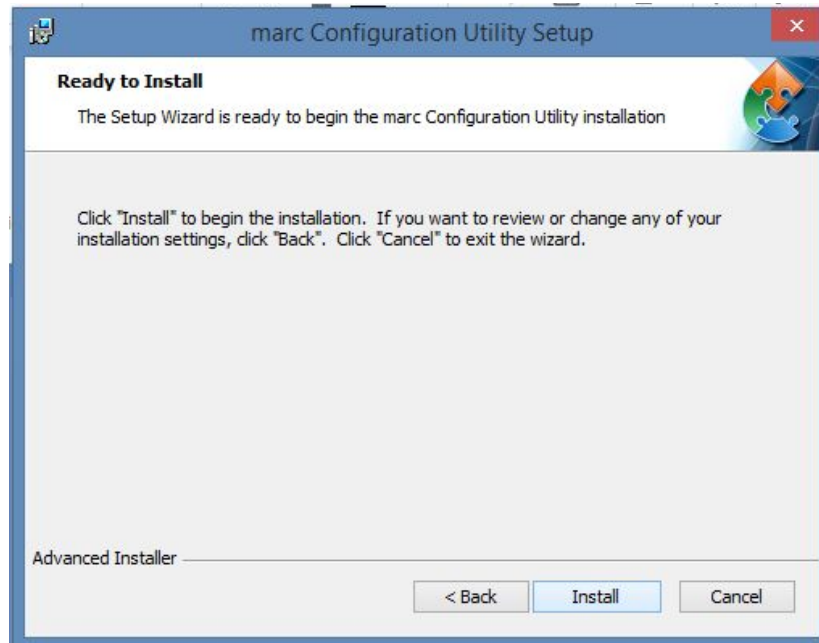
- Click on “Next>” Button



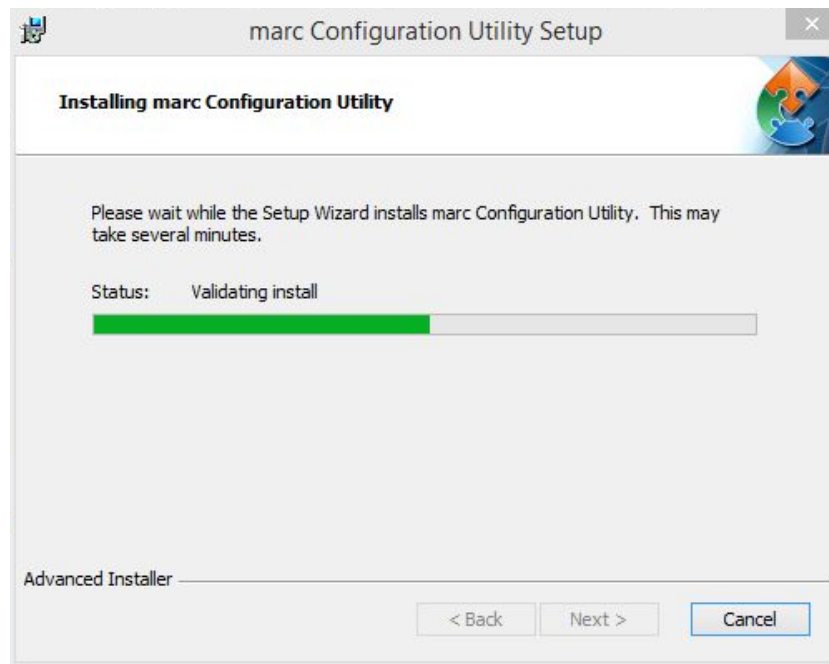
- Click on “Next>” Button



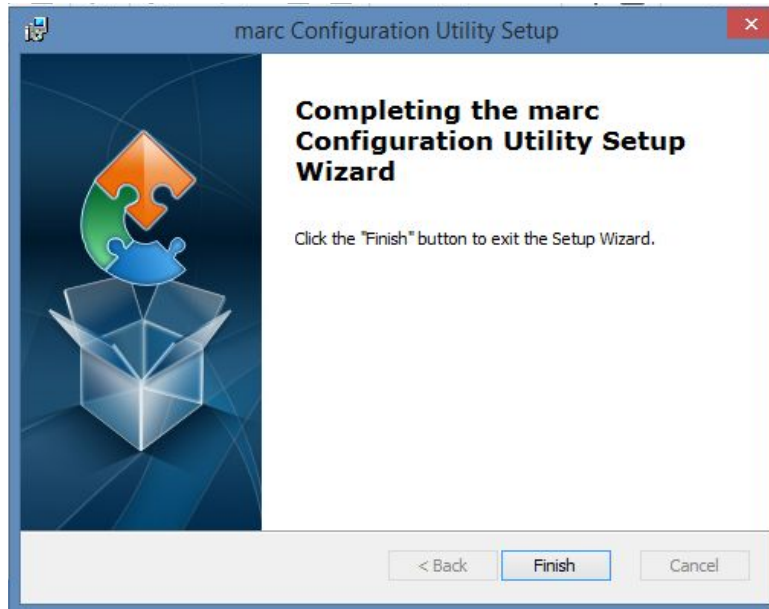
- Click on "Install" Button



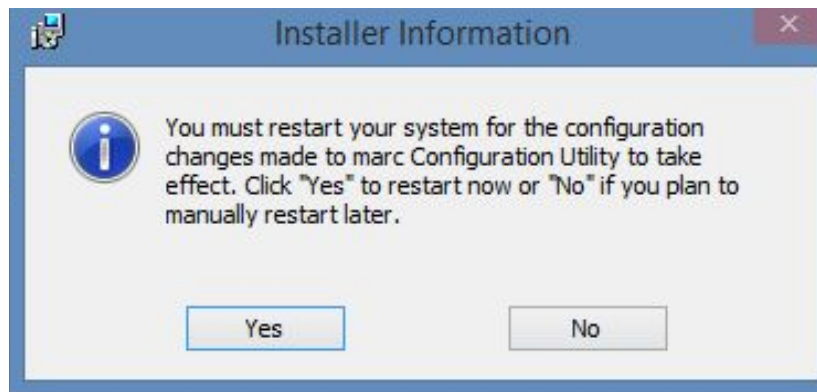
- Click on "Ok" Button



- Click on "Finish" Button



- Click on "Yes" Button to restart the computer.



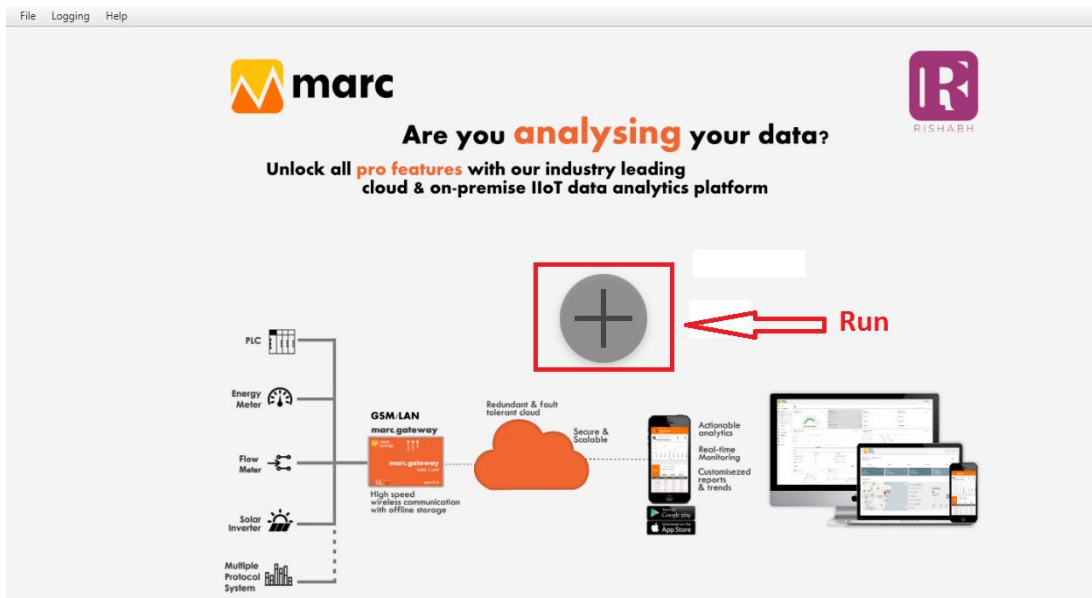
3. Operating Instructions

Select the operation mode by selecting read or write operation.

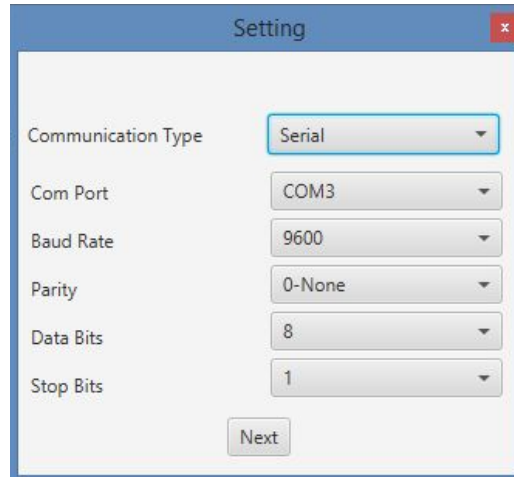
- User can run the software by double clicking on the “marc Configuration Utility” icon on the dashboard.



- Click on the plus(+) sign for communication setting.



- Select the proper communication setting.
Select Communication Type - 1) Serial
2) TCP/IP
Select converter COM port and other meter setting like Baud Rate, Parity, Data Bits, Stop Bits.



Please Note- Selected Baud Rate, Parity, Data Bits, Stop Bits setting must be the same as in the actual meter of serial communication settings.

3.1 Read Operation

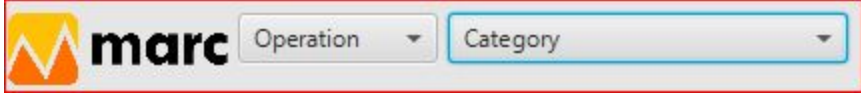
- Select Read operation



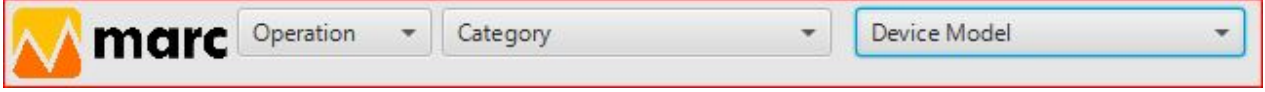
- Select “Category” of device model. Currently following categories are available for users.
A) Multifunction Meter with Data Logger
B) Multifunction Meter
Note- In future other categories will also be added for which user has to update device and software.

A) Multifunction Meter-

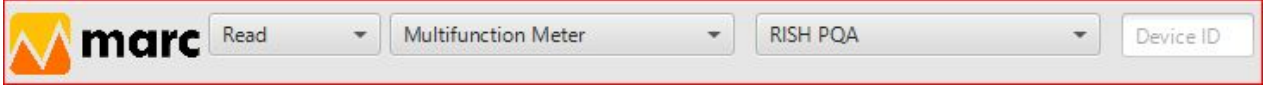
- Select Category “Multifunction Meter”.



- Select Device model as per the device model list.



- Enter the Device Id of the meter which user wants to monitor.



- Click on the green colour “Run” button.

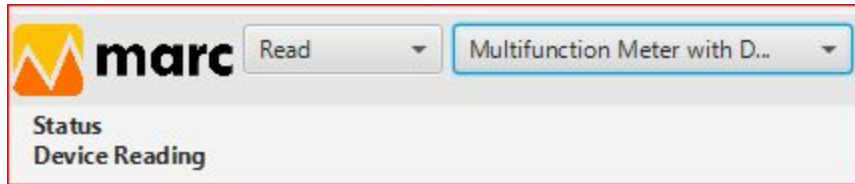


- Parameter’s live values will get displayed on the left side of the screen. To stop real time monitoring click red colour Stop “button”.

Parameter	Value	Parameter	Old Value	Action	New Value	Action
Volts 1	239.445	PT-Primary	-	Read	Value	Write
Volts 2	239.584	PT-Secondary	-	Read	Value	Write
Volts 3	0.0	CT-Primary	-	Read	Value	Write
Current 1	0.907	CT-Secondary	-	Read	Value	Write
Current 2	0.93	Demand Integration Time	-	Read	Value	Write
Current 3	0.875	Energy Output	-	Read	Value	Write
Watt 1	207.443	System Type	-	Read	Value	Write
Watt 2	205.015	Node Address	-	Read	Value	Write
Watt 3	0.0	Pulse Divisor	-	Read	Value	Write
VA 1	211.1	Reset Parameters	-	Read	Value	Write
VA 2	213.495	Number of Poles	-	Read	Value	Write
VA 3	0.0	R485 Setup Code	-	Read	Value	Write
VAR 1	-39.077	Pulse Divisor	-	Read	Value	Write
VAR 2	-59.514	Energy DigitReset Count	-	Read	Value	Write
VAR 3	0.0	30mA Noise current Elimination	-	Read	Value	Write

B) Multifunction Meter with Data Logger

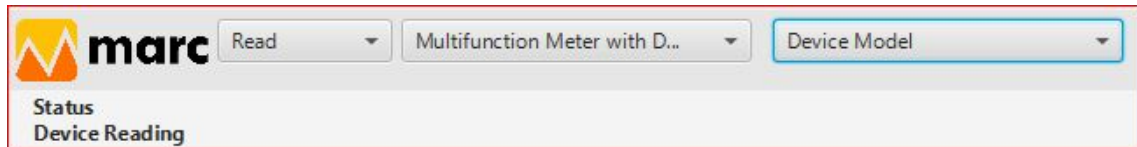
- Select Category Multifunction Meter with Data Logger.



marc Read Multifunction Meter with D...

Status
Device Reading

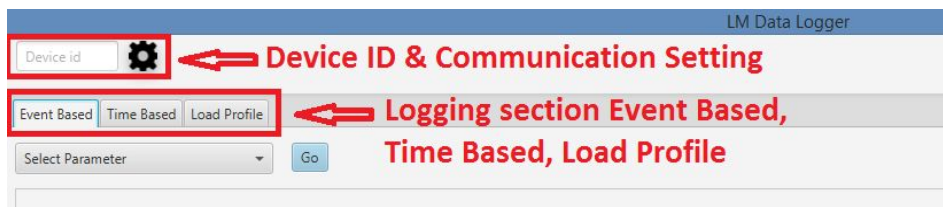
- Select Meter Model




marc Read Multifunction Meter with D... Device Model

Status
Device Reading

- Enter Device id and communication settings (As previously configured)
User gets three logging sections. Event based, Time based and Load profile based logging.



LM Data Logger

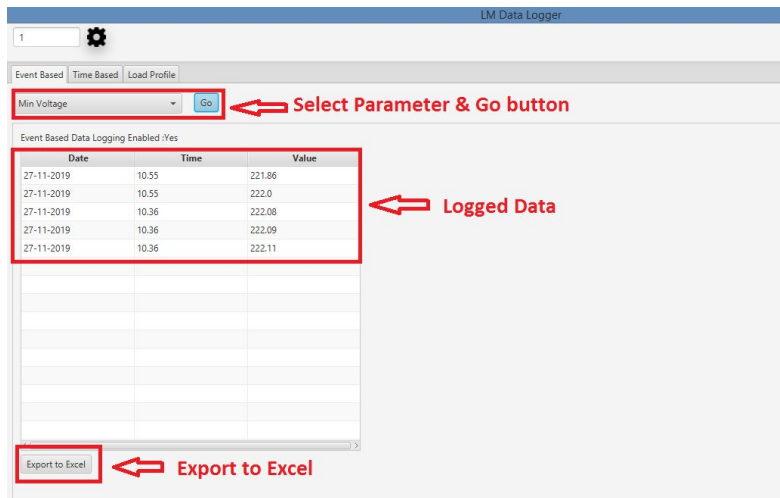
Device id  ← Device ID & Communication Setting

Event Based Time Based Load Profile ← Logging section Event Based, Time Based, Load Profile

Select Parameter Go

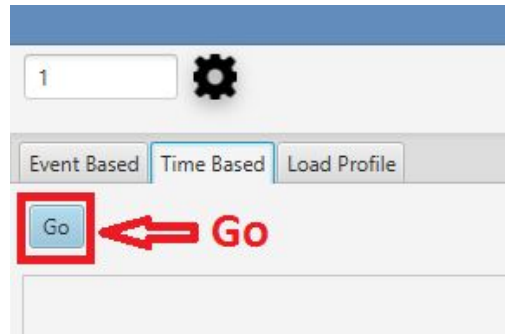
A) Event based

- In event based logging, the user has to select a parameter and click the “Go” button. User gets the logged data as shown in the screen below.
Also the user has the facility to export reports in excel format.



B) Time Based

- Select time based and click “Go” Button.




- User has the facility to export the data in the excel file.

C) Load Profile

- Select Profile, Parameter, Start and End date and click the “Go” Button.

LM Data Logger

1 

Event Based | Time Based | Load Profile

Daily Energy Datalog | Imp Watt Energy | 20/11/2019 | 27/11/2019 | Go

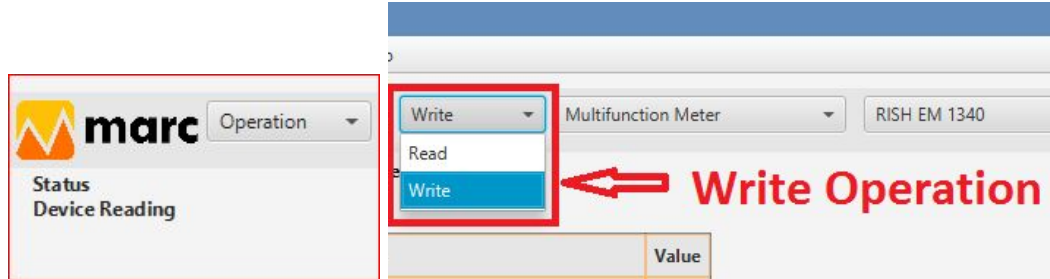
Load Profile Data Logging Enabled :Yes
Logging Enabled/Start Date : 20-11-2019

Date	Imp Watt Energy
2019-11-20	33549
2019-11-21	0
2019-11-22	0
2019-11-23	0
2019-11-24	0
2019-11-25	0
2019-11-26	39286
2019-11-27	3187

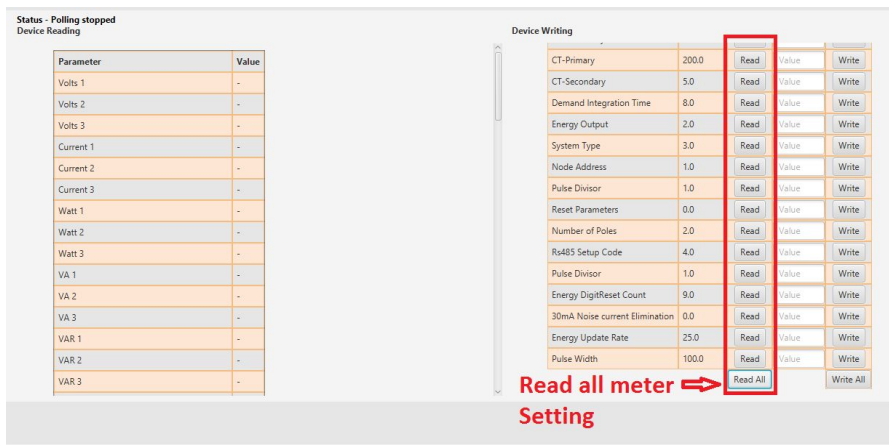
Export to Excel

3.2 Write Operation

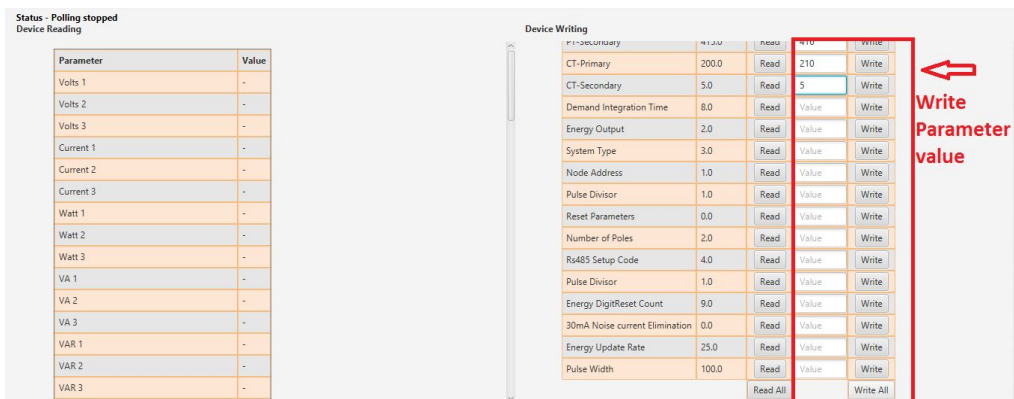
- Select "Write" operation mode.



- Select "Device Model" and Enter the "Device ID" and click "Read All" at the bottom right of the screen.



- If users want to change any parameter value Like CT, PT Ratio etc. enter value in "New Value" column w. r. t. parameter and click "Write" button.



Users may read or Write parameter values individually or at a time for all.

- Click the Ok button. Values Successfully written.

